

Version 1



Version 2



CROCHET | SKILL LEVEL: INTERMEDIATE

## ABBREVIATIONS

**Approx** =

Approximately

**Beg** = Beginning

**Ch** = Chain(s)

**Cont** = Continue

**Dc** = Double crochet

**Hdc** = Half double  
crochet

**Mosaic Dc** = Working  
in front of chain

spaces, work 1 dc in  
skipped sc 3 rows  
below

**Pat** = Pattern

**Rem** = Remain(ing)

**Rep** = Repeat

**Rnd(s)** = Round(s)

**RS** = Right side

**Sc** = Single crochet

**Sl st** = Slip stitch

**Sp(s)** = Space(s)

**St(s)** = Stitch(es)

**Tr** = Treble crochet

**WS** = Wrong side

**Yoh** = Yarn over hook

## MATERIALS

**Red Heart® Super Saver®** (7 oz/198 g; 364 yds/333 m)

### Version 1

**Contrast A** Soft White (0316) **4 balls or 1200 yds/1097 m**

**Contrast B** Burgundy (0376) **4 balls or 1213 yds/1109 m**

**Contrast C** Hunter Green (0389) **2 balls or 588 yds/538 m**

**Contrast D** Cherry Red (0319) **1 ball or 303 yds/277 m**

### Version 2

**Contrast A and D** Soft White (0316) **5 balls or 1504 yds 1374 m**

**Contrast B** Aruba Sea (0505) **4 balls or 1213 yds/1109 m**

**Contrast C** Delft Blue (0885) **2 balls or 588 yds/538 m**

Size U.S. I/9 (5.5 mm) crochet hook **or size needed to obtain gauge.**  
Yarn needle.

## MEASUREMENTS

Approx 50½" x 59" [128.5 x 150 cm].

## GAUGES

12 sc and 15 rows = 4" [10 cm].

12 sts and 15 rows = 4" [10 cm] in  
Mosaic Pat.

## INSTRUCTIONS

### BLANKET

#### Notes:

- To change color, work to last 2 loops on hook, yoh with new color. Pull through 2 loops on hook to complete st and proceed in new color.

- Carry color when not in use loosely up side of work unless otherwise stated.
- Each skipped sc has chain space worked above it for 2 rows. You will chain 1 more stitch than the number of stitches you will be skipping. For example, if you skip 1 stitch, you will chain 2 (counts as 1 st); if you skip 2 stitches, you will chain 3; etc. Each chain space counts as the number of sts you skipped.
- Mosaic Dc always replaces sc directly behind it on working row.

- WS of your work maintains alternating 2-row striped pattern because you are working in front of chain spaces each time you work Mosaic Dc - you are never working around chain-spaces. The chain-spaces sit behind Mosaic Dc.
- Blanket is worked from side to side.

### Set Up Mosaic Pat

With A, ch 164 (multiple of 10 ch + 14).

**1st row:** (WS). 1 sc in 2nd ch from hook. 1 sc in each ch to end of chain. Turn. 163 sc.

**2nd row:** With B, ch 1. 1 sc in each of first 4 sts. \*Ch 2. Skip next st. 1 sc in each of next 3 sts. Ch 2. Skip next st. 1 sc in each of next 5 sts. Rep from \* to last 9 sts. Ch 2. Skip next st. 1 sc in each of next 3 sts. Ch 2. Skip next st. 1 sc in each of last 4 sts. Turn.

**3rd row:** Ch 1. 1 sc in each of first 4 sts. \*Ch 2. Skip next ch-2. 1 sc in each of next 3 sts. Ch 2. Skip next ch-2. 1 sc in each of next 5 sts. Rep from \* to last 9 sts. Ch 2. Skip next ch-2. 1 sc in each of next 3 sts. Ch 2. Skip next ch-2. 1 sc in each of next 4 sts. Turn.

Begin working Mosaic Pat as follows (see diagram on page 4):

**1st row:** (RS). With A, ch 1. 1 sc in each of first 3 sts. \*Ch 2. Skip next st. 1 Mosaic Dc in next skipped sc 3 rows below. 1 sc in each of next 3 sts. 1 Mosaic Dc in next skipped sc 3 rows below. Ch 2. Skip next st. 1 sc in each of next 3 sts. Rep from \* to end of row. Turn.

**2nd row:** Ch 1. 1 sc in each of first 3 sts. \*Ch 2. Skip next ch-2. 1 sc in each of next 5 sts. Ch 2. Skip next ch-2. 1 sc in each of next 3 sts. Rep from \* to end of row. Turn.

**3rd row:** With B, ch 1. 1 sc in first st. Ch 3. Skip next 2 sts. \*1 Mosaic Dc in next skipped sc 3 rows below. 1 sc in each of next 5 sts. 1 Mosaic Dc in next skipped sc 3 rows below. Ch 4. Skip next 3 sts. Rep from \* to last 10 sts. 1 Mosaic Dc in next skipped sc 3 rows below. 1 sc in each of next 5 sts. 1 Mosaic Dc in next skipped sc 3 rows below. Ch 3. Skip next 2 sts. 1 sc in last st. Turn.

**4th row:** Ch 1. 1 sc in first sc. Ch 3. Skip next 3 ch. \*1 sc in each of next 7 sts. Ch 4. Skip next ch-4. Rep from \* to last 10 sts, 1 sc in each of next 7 sts. Ch 3. Skip next ch-3. 1 sc in last st. Turn.

**5th row:** With A, ch 1. 1 sc in first st. 1 Mosaic Dc in each of next 2 skipped sc 3 rows below. \*Ch 2. Skip next st. 1 sc in each of next 5 sts. Ch 2. Skip next st. 1 Mosaic Dc in each of next 3 skipped sc 3 rows below. Rep from \* to last 10 sts. Ch 2. Skip next st. 1 sc in each of next 5 sts. Ch 2. Skip next st. 1 Mosaic Dc in each of next 2 skipped sc 3 rows below. 1 sc in last st. Turn.

**6th row:** Ch 1. 1 sc in each of first 3 sts. \*Ch 2. Skip next ch-2. 1 sc in each of next 5 sc. Ch 2. Skip next ch-2. 1 sc in each of next 3 sts. Rep from \* to end of row. Turn.

**7th row:** With B, ch 1. 1 sc in each of first 3 sts. \*1 Mosaic Dc in next skipped sc 3 rows below. Ch 2. Skip next st. 1 sc in each of next 3 sts. Ch 2. Skip next st. 1 Mosaic Dc in next skipped sc 3 rows below. 1 sc in each of next 3 sts. Rep from \* to end of row. Turn.

**8th row:** Ch 1. 1 sc in each of first 4 sts. \*Ch 2. Skip next ch-2. 1 sc in each of next 3 sts. Ch 2. Skip next ch-2. 1 sc in each of next 5 sts. Rep from \* to last 9 sts. Ch 2. Skip next ch-2. 1 sc in each of next 3 sts. Ch 2. Skip next ch-2. 1 sc in each of last 4 sts. Turn.

**9th row:** With A, ch 1. 1 sc in each of first 4 sts. \*1 Mosaic Dc in next skipped sc 3 rows below. Ch 4. Skip next 3 sts. 1 Mosaic Dc in next skipped sc 3 rows below. 1 sc in each of next 5 sts. Rep from \* to last 9 sts. 1 Mosaic Dc in next skipped sc 3 rows below. Ch 4. Skip next 3 sts. 1 Mosaic Dc in next skipped sc 3 rows below. 1 sc in each of last 4 sts. Turn.

**10th row:** Ch 1. 1 sc in each of first 5 sts. \*Ch 4. Skip next ch-4. 1 sc in each of next 7 sts. Rep from \* to last 8 sts. Ch 4. Skip next ch-4. 1 sc in each of last 5 sts. Turn.

**11th row:** With B, ch 1. 1 sc in each of first 4 sts. \*Ch 2. Skip next st. 1 Mosaic Dc in each of 3 next skipped sc 3 rows below. Ch 2. Skip next st. 1 sc in each of next 5 sts. Rep from \* to last 9 sts. Ch 2. Skip next st. 1 Mosaic Dc in each of 3 next skipped sc 3 rows below. Ch 2. Skip next st. 1 sc in each of last 4 sts. Turn.

**12th row:** Ch 1. 1 sc in each of first 4 sts. \*Ch 2. Skip next ch-2. 1 sc in each of next 3 sts. Ch 2. Skip next ch-2. 1 sc in each of next 5 sts. Rep from \* to last 9 sts. Ch 2. Skip next ch-2. 1 sc in each of next 3 sts. Ch 2. Skip next ch-2. 1 sc in each of last 4 sts. Turn.

These 12 rows form pat.

Cont in pat until work from beg measures approx 45½" [115.5 cm], ending on a 12th row of pat.

**Next row:** (RS). With A, ch 1. 1 sc in each of first 4 sc. \*1 Mosaic Dc in next skipped sc 3 rows below. 1 sc in each of next 3 sts. 1 Mosaic Dc in next skipped sc 3 rows below. 1 sc in each of next 5 sc. Rep from \* to last 9 sts. (1 Mosaic Dc in next skipped sc 3 rows below. 1 sc in each of next 3 sts) twice. 1 sc in last sc. Fasten off.

## FINISHING

### Edging

**Note:** Turning at ends of rnds keeps corners square.

**1st rnd:** (RS). Join C with sl st to any corner of Blanket. Ch 1. Work sc evenly around Blanket (working

approx 4 sc evenly spaced along every 5 rows across top and bottom edges, and 1 sc in each st down side edges), working around yarn carried loosely up side of work to enclose it and working (1 sc. Ch 2. 1 sc) in each corner. Join with sl st to first sc. **Turn.**

**2nd rnd:** (WS). Ch 1. 1 sc in each sc around working (1 sc. Ch 2. 1 sc) in each corner ch-2 sp. Join with sl st to first sc. **Turn.**

**3rd rnd:** (RS). Ch 1. 1 sc in each sc around working (1 sc. Ch 2. 1 sc) in each corner ch-2 sp. Join with sl st to first sc. **Turn.**

**4th to 9th rnds:** Rep 2nd and 3rd rnds 3 times more. Fasten off.

### Holly Leaf (make 8)

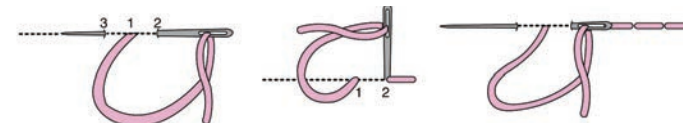
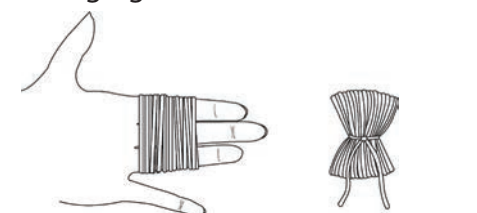
See diagram on page 4  
With C, ch 15.

**1st rnd:** (1 sc. 1 hdc) all in 2nd ch from hook. 1 hdc in each of next 2 ch. 1 dc in each of next 5 ch. 1 hdc in each of next 5 ch. 2 sc in last ch. *Working in rem loops up opposite side of foundation ch, 2 sc in first ch.* 1 hdc in each of next 5 ch. 1 dc in each of next 5 ch. 1 hdc in each of next 2 ch. (1 hdc. 1 sc) all in last ch. Join with sl st in first sc. 32 sts.

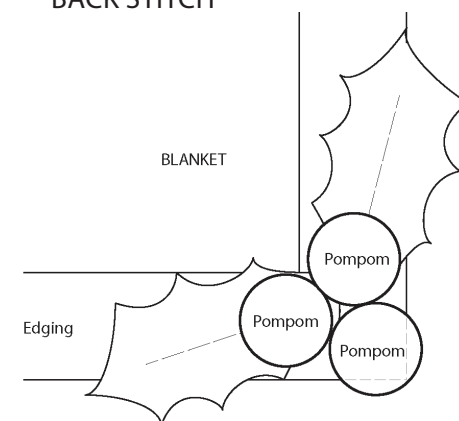
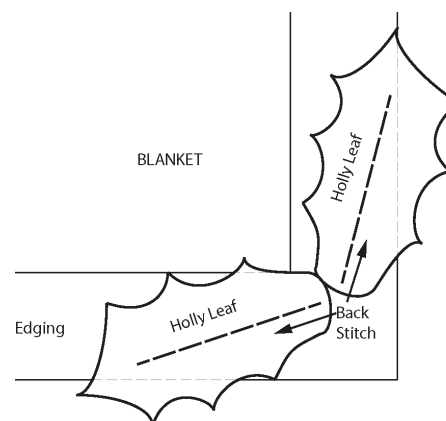
**2nd rnd:** Ch 1. 1 sc in first sc. [1 hdc in next st. 1 dc in next st. (1 tr. Ch 3. Sl st in top of tr. 1 tr) all in next st. 1 dc in next st] 3 times. 1 hdc in next hdc. 1 sc in each of next 2 sc. Ch 3. Sl st in top of last sc. 1 sc in each of next 2 sc. [1 hdc in next st. 1 dc in next st. (1 tr. Ch 3. Sl st in top of tr. 1 tr) all in next st. 1 dc in next st] 3 times. 1 hdc in next hdc. 1 sc in last sc. Sl st in same sp as last sc. Fasten off.

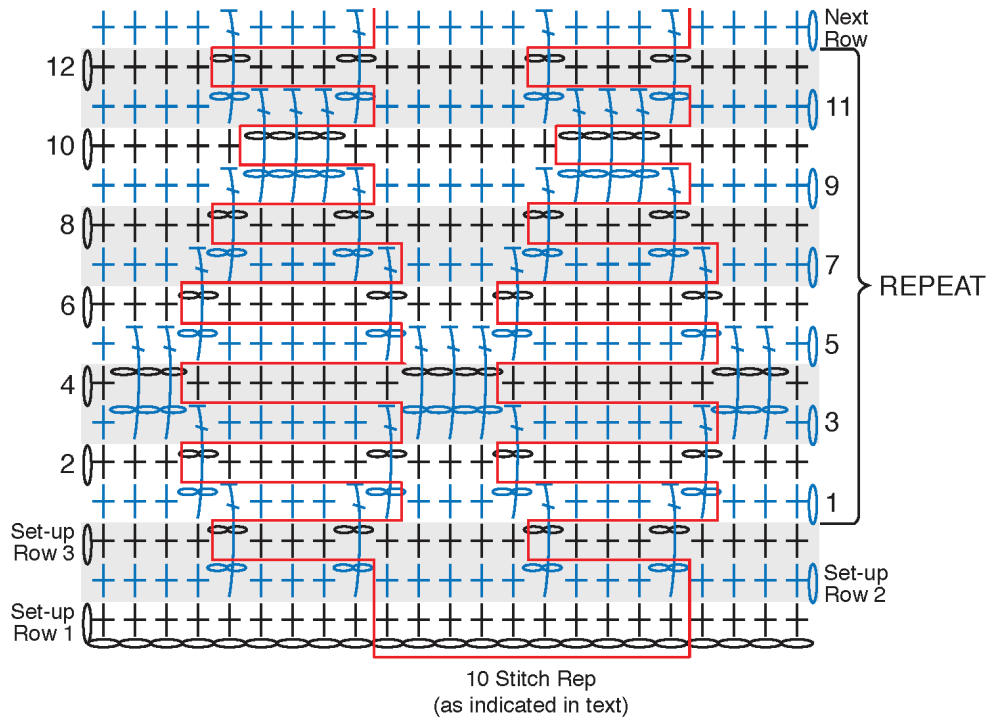
With C, sew 2 Holly Leaves to RS of each corner of Blanket. Use back stitch to sew down center of each Leaf (along foundation chain), leaving edges of Leaves loose (as shown in diagram).

**Pompoms (make 12):** Wind D around 3 fingers approx 80 times. Tie tightly in middle and leave a long end for attaching to Blanket. Cut loops at both ends and trim to smooth round shape. Sew securely, in groups of 3, to corners of Blanket as shown in diagram, noting pompoms are attached to RS of Edging, not hanging off corners of Blanket.



BACK STITCH





### REDUCED SAMPLE OF PATTERN

