



KNIT | SKILL LEVEL: INTERMEDIATE

ABBREVIATIONS

Approx = Approximately

Beg = Beginning

C4B = Slip next 2 stitches onto cable needle and leave at back of work. K2, then K2. from cable needle

C4F = Slip next 2 stitches onto cable needle and leave at front of work. K2, then K2. from cable needle

K = Knit

P = Purl

Pat = Pattern

Rep = Repeat

RS = Right side

St(s) = Stitch(es)

WS = Wrong side

MEASUREMENTS

Approx 50 x 54" [127 x 137 cm].

GAUGE

16 sts and 22 rows = 4" [10 cm] in Cable and Seed st pat.

INSTRUCTIONS

Notes

- If desired, markers can be placed to separate the Seed st and Cable pat sections.
- If working from chart, read RS rows from right to left and WS rows from left to right.

THROW

Using long tail technique, cast on 200 sts. **Do not** join. Working back and forth across needle in rows, proceed as follows:
(See chart on page 2).

1st row: (WS). K1. (P1. K1) twice for first Seed st section. *K2. P4. K2. for Cable pat section. K1. (P1. K1) twice for Seed st section. Rep from * to end of row.

2nd row: K1. (P1. K1) twice. P2. C4F. P2. K1. (P1. K1) twice. *P2. C4B. P2. K1. (P1. K1) twice. P2. C4F. P2. K1. (P1. K1) twice. Rep from * to end of row.

MATERIALS

RED HEART® Super Saver® (7 oz/198 g; 364 yds/333 m)

Minty (0520)

4 balls

Size U.S. 9 (5.5 mm) circular knitting needle 36" [90 cm] long **or size needed to obtain gauge.** Cable needle. Yarn needle.

3rd row: K1. (P1. K1) twice. *K2. P4. K3. (P1. K1) twice. Rep from * to end of row.

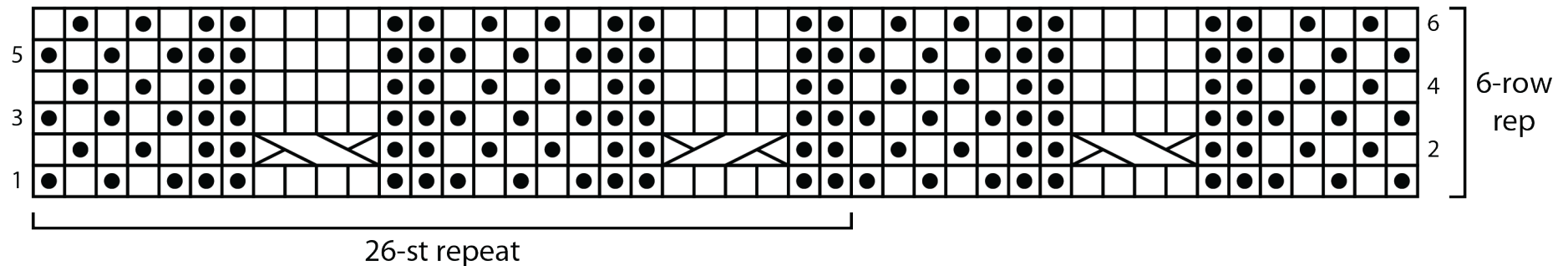
4th row: K1. (P1. K1) twice. *P2. K4. P2. K1. (P1. K1) twice. Rep from * to end of row.

5th and 6th rows: As 3rd and 4th rows.



Rep 1st to 6th rows until work from beg measures approx 54" [137 cm], ending on 3rd row of pat.

Cast off knitwise (RS).

Cable and Seed stitch pattern



Key

- knit on right side, purl on wrong side
- purl on right side, knit on wrong side
-  C4F
-  C4B