



KNIT  
SKILL LEVEL  
EASY



Designed by Laura Bain

## What you will need:

**RED HEART® Comfort Chunky®:** 4 balls in 4456 Blue Jeans

**Susan Bates® Circular Knitting Needles:** 15mm [US 19] 29" (73.5 cm)

Cable Needle, yarn needle

**GAUGE:** 8 sts = 4" (10 cm); 10 rows = 4" (10 cm) in Throw pattern with 2 strands held together. **CHECK YOUR GAUGE.** Use any size needles to obtain the gauge.



**RED HEART® Comfort Chunky®,** Art. N405, available in 12¾ oz (360g), 448 yd (410m) balls

# Casual Cables Throw

The bulky weight yarn gives these cables a softer flowing look that is perfect for adding comfort to your home. Knit on circular needles to accommodate the number of stitches, this is a throw that will be enjoyed for years to come.

SHOP KIT

Throw measures 49 x 55" (124 x 140 cm)

## NOTES

1. Hold 2 strands of yarn together throughout.
2. To make a gauge swatch, cast on 34 sts and work in Throw pattern for at least 10" (25.5 cm).

## CABLE STITCHES

**C6B (cable 6 back):** Slip next 3 sts to cable needle and hold in back, k3, k3 from cable needle.

**C6F (cable 6 front):** Slip next 3 sts to cable needle and hold in front, k3, k3 from cable needle.

## THROW

Cast on 98 sts.

**Row 1 (right side):** K12, p2, \* k6, p2; repeat from \* to last 12 sts, k12.

**Row 2 and all even rows (wrong side):** K6, p6, \* k2, p6; repeat from \* to last 6 sts, k6.

**Row 3:** Repeat Row 1.

**Row 5:** K6, C6B, \* p2, k6, p2, C6B; repeat from \* to last 6 sts, k6.

**Row 7:** Repeat Row 1.

**Row 9:** Repeat Row 1.

**Row 11:** K12, \* p2, C6F, p2, k6, \* repeat from \* to last 6 sts, k6.

**Row 13:** Repeat Row 1.

**Row 15:** Repeat Row 1.

**Row 16:** Repeat Row 2.

Repeat rows 5 - 16 only until piece measures 55" (140 cm), ending on a Row 9 or a Row 15.

Bind off all sts in pattern.



## FINISHING

Weave in all loose ends.

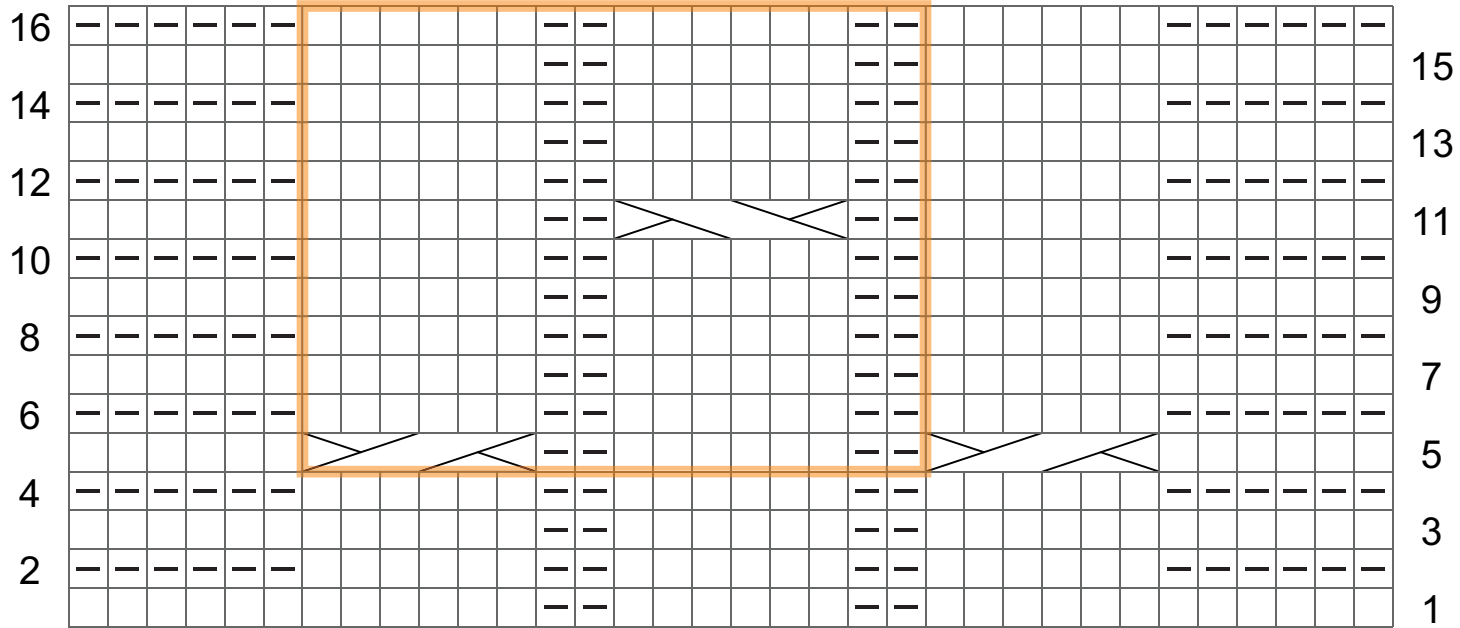
## ABBREVIATIONS

**k** = knit; **p** = purl; **st(s)** = stitch (es); **\*** or **\*\*** = repeat whatever follows the \* or \*\* as indicated.

See chart on next page...



2015 & 2016  
WOMEN'S CHOICE AWARD®  
AMERICA'S MOST RECOMMENDED  
YARN BRAND



Symbol Key

K on right side, p on wrong side

P on right side, k on wrong side

C6B

C6F

Repeat