



CROCHET | SKILL LEVEL: **INTERMEDIATE**

## ABBREVIATIONS

<b>Alt</b> = Alternate	<b>Pat</b> = Pattern	<b>Sl st</b> = Slip stitch
<b>Beg</b> = Beginning	<b>PM</b> = Place marker	<b>Sp(s)</b> = Space(s)
<b>Ch</b> = Chain(s)	<b>Rem</b> = Remain	<b>St(s)</b> = Stitch(es)
<b>Cont</b> = Continue(ity)	<b>Rep</b> = Repeat	<b>WS</b> = Wrong side
<b>Dc</b> = Double crochet	<b>RS</b> = Right side	
<b>Inc</b> = Increase(d)	<b>Sc</b> = Single crochet	

## SIZES

### To fit chest measurement

<b>XS/S</b>	<b>28-34"</b> [71-86.5 cm]
<b>M</b>	<b>36-38"</b> [91.5-96.5 cm]
<b>L</b>	<b>40-42"</b> [101.5-106.5 cm]
<b>XL</b>	<b>44-46"</b> [112-117 cm]
<b>2/3XL</b>	<b>48-54"</b> [122-137 cm]
<b>4/5XL</b>	<b>56-62"</b> [142-157.5 cm]

### Finished chest

<b>XS/S</b>	<b>41"</b> [104 cm]
<b>M</b>	<b>45"</b> [114.5 cm]
<b>L</b>	<b>48"</b> [122 cm]
<b>XL</b>	<b>52"</b> [132 cm]
<b>2/3XL</b>	<b>60"</b> [152.5 cm]
<b>4/5XL</b>	<b>63"</b> [160 cm]

## GAUGE

13 sts and 13 rows = 4" [10 cm] in pat.

## INSTRUCTIONS

The instructions are written for smallest size. If changes are necessary for larger sizes the instructions will be written thus (.). Numbers for each size are shown in the same color throughout the pattern. When only one number is given in black, it applies to all sizes.

### STRIPE PAT I

With A – 4 rows  
 With C – 4 rows.  
 With B – 4 rows.  
 With D – 4 rows.  
 These 16 rows form Stripe Pat.

## MATERIALS

**Caron® Simply Soft™** (6 oz/170 g; 315 yds/288 m)

Sizes	XS/S	M	L	XL	2/3XL	4/5XL	
<b>Contrast A</b>							
Cool Green (39770)	2	2	2	3	3	4	<b>balls</b>
<b>Contrast B</b>							
Robin's Egg (39780)	2	2	2	3	3	4	<b>balls</b>
<b>Contrast C</b>							
Lt Country Peach (39737)	2	2	2	3	3	4	<b>balls</b>
<b>Contrast D</b>							
Gold (39782)	2	2	2	3	3	4	<b>balls</b>

Size U.S. I/9 (5.5 mm) Susan Bates® Silvalume® crochet hook **or size needed to obtain gauge.** Susan Bates® stitch markers. Susan Bates® yarn needle.

## NOTES:

### Front and BACK (make alike)

With D, ch **68 (74-80-86-98-104)** (multiple of 6 ch + 2).

See diagram on page 3.

**Foundation row:** (WS). With D, 1 sc in 2nd ch from hook. \*Ch 1. Skip next ch. 1 sc in next ch. Rep from \* to end of chain. Turn. **67 (73-79-85-97-103)** sts. [**34 (37-40-43-49-52)** sc].

**1st row:** (RS). Ch 1. 1 sc in first sc. \*Ch 1. Skip next ch-1 sp. 1 sc in next sc. Rep from \* to end of row. Turn.

**2nd row:** As 1st row. Break D.

**3rd row:** Join A with sl st to first sc. Ch 1. 1 sc in same sp as sl st. \*Ch 3. Skip all of next: (Ch-1 sp. 1 sc). Sl st in next ch-1 sp 3 rows below (Foundation row). Ch 3. Skip all of next: (1 sc. Ch-1 sp). 1 sc in next sc. Rep from \* to end of row. Turn.

**4th row:** Ch 1. 1 sc in first sc. \*Working into 2 rows below (2nd row) [(Ch 1. Skip next ch-1 sp. 1 dc in next sc) twice. Ch 1. Skip next ch-1]. Working into last row (3rd row), 1 sc in next sc. Rep from \* to end of row. Turn.

**5th row:** (RS). Ch 1. 1 sc in first sc. \*Ch 3. Skip all of next (Ch-1 sp. 1 dc). Sl st in next ch-1 sp 3 rows below (2nd row). Ch 3. Skip all of next (1 dc. Ch-1 sp). 1 sc in next sc. Rep from \* to end of row. Turn.

**6th row:** (WS). Ch 1. 1 sc in first sc. \*Working into 2 rows below (4th row) [(Ch 1. Skip next ch-1 sp. 1 dc in next dc) twice. Ch 1. Skip next ch-1 sp]. Working into last row (5th row), 1 sc in next sc. Rep from \* to end of row. Break A. Turn.

**7th row:** (RS). Join C with sl st to first sc. Ch 1. 1 sc in same sp as sl st. \*Ch 3. Skip all of next (Ch-1 sp. 1 dc). Sl st in next ch-1 sp 3 rows below (4th row). Ch 3. Skip all of next (1 dc. Ch-1 sp). 1 sc in next sc. Rep from \* to end of row. Turn.

**8th row:** (WS). Ch 1. 1 sc in first sc. \*Working into 2 rows below (6th row) [(Ch 1. Skip next ch-1 sp. 1 dc in next dc) twice. Ch 1. Skip next ch-1 sp]. Working into last row (7th row), 1 sc in next sc. Rep from \* to end of row. Break A. Turn. First 6 rows of Stripe Pat are complete.

Keeping cont of Stripe Pat, rep last 2 rows for ZigZag Pat until work from beg measures 14" [35.5 cm], ending on a WS row. PM at each end of last row.

**Shoulders:** Keeping cont of Stripe pat, proceed as follows: See diagram on page 4.

**Next row:** Ch 1. 1 sc in first sc. (Ch 1. Skip next ch-1 sp. 1 sc in next st) **10 (11-13-14-16-17)** times.

**Turn.** Leave rem sts unworked.

**Next 6 rows:** Ch 1. 1 sc in first sc. \*Ch 1. Skip next ch-1 sp. 1 sc in next sc. Rep from \* to end of row. Turn. Fasten off at end of last row. **21 (23-27-29-33-35)** sts.

With RS facing, skip next **25 (27-25-27-31-33)** sts.

**1st row:** (RS). Join appropriate color to next st. Ch 1. 1 sc in same sp as sl st. (Ch 1. Skip next ch-1 sp. 1 sc in next st) **10 (11-13-14-16-17)** times. Turn.

**Next 6 rows:** Ch 1. 1 sc in first sc. \*Ch 1. Skip next ch-1 sp. 1 sc in next sc. Rep from \* to end of row. Turn. Fasten off at end of last row. **21 (23-27-29-33-35)** sts.

## SLEEVES

With D, ch **38 (38-38-38-44-44)**.

**Foundation row:** (WS). With D, 1 sc in 2nd ch from hook. \*Ch 1. Skip next ch. 1 sc in next ch. Rep from \* to end of chain. Turn. **37 (37-37-37-43-43)** sts [**19 (19-19-19-22-22)** sc].

**1st and 2nd rows:** Ch 1. 1 sc in first sc. \*Ch 1. Skip next ch-1 sp. 1 sc in next sc. Rep from \* to end of row. Break D. Turn.

**3rd row:** (RS). Join A with sl st to first sc. Ch 1. 2 sc in same sp as sl st. \*Ch 3. Skip all of next: (Ch-1 sp. 1 sc). Sl st in next ch-1 sp 3 rows below (Foundation row). Ch 3. Skip all of next: (1 sc. Ch-1 sp). 1 sc in next sc. Rep from \*, ending with 2 sc in last sc. Turn. **39 (39-39-39-45-45)** sts. [**21 (21-21-21-24-24)** sc].

**4th row:** Ch 1. 1 sc in each of first 2 sc. \*Working into 2 rows below (2nd row) [(Ch 1. Skip next ch-1 sp. 1 dc in next sc) twice. Ch 1. Skip next ch-1 sp]. Working into last row (3rd row), 1 sc in next sc. Rep from \* to last sc. 1 sc in last sc. Turn.

**5th row:** (RS). Ch 1. 1 sc in each of first 2 sc. \*Ch 3. Skip all of next (Ch-1 sp. 1 dc). Sl st in next ch-1 sp 3 rows below (2nd row). Ch 3. Skip all of next (1 dc. Ch-1 sp). 1 sc in next sc. Rep from \* to last sc. 1 sc in last sc. Turn.

**6th row:** (WS). Ch 1. 1 sc in each of first 2 sc. \*Working into 2 rows below (4th row) [(Ch 1. Skip next ch-1 sp. 1 dc in next dc) twice. Ch 1. Skip next ch-1 sp]. Working into last row (5th row), 1 sc in next sc. Rep from \* to last sc. 1 sc in last sc. Break A. Turn.

**7th row:** (RS). Join B with sl st to first sc. Ch 1. 2 sc in same sp as sl st. 1 sc in next sc. \*Ch 3. Skip all of next (Ch-1 sp. 1 dc). Sl st in next ch-1 sp 3 rows below (4th row). Ch 3. Skip all of next (1 dc, Ch-1 sp). 1 sc in next sc. Rep from \* to last sc. 2 sc in last sc. Turn. **41 (41-41-41-47-47)** sts. [**23 (23-23-23-26-26)** sc].

**8th row:** (WS). Ch 1. 1 sc in first sc. Ch 1. Skip next sc. 1 sc in next sc. \*Working into 2 rows below (6th row) [(Ch 1. Skip next ch-1 sp. 1 dc in next dc) twice. Ch 1. Skip next ch-1 sp]. Working into last row, 1 sc in next sc. Rep from \* to last 2 sc. Ch 1. Skip next sc. 1 sc in last sc. Turn.

First 6 rows of Stripe Pat are complete. Last 2 rows form pat and side increases.

Keeping cont of Stripe Pat, proceed as follows:

**Next row:** (RS). Ch 1. 1 sc in first sc. Ch 1. Skip next ch-1 sp. 1 sc in next sc. \*Ch 3. Skip all of next (Ch-1 sp. 1 dc). Sl st in next ch-1 sp 3 rows below. Ch 3. Skip all of next (1 dc. Ch-1 sp). 1 sc in next sc. Rep from \* to last ch-1 sp and sc. Ch 1. Skip next ch-1 sp. 1 sc in last sc. Turn.

**Next row:** (WS). Ch 1. 1 sc in first sc. Ch 1. Skip next ch-1 sp. 1 sc in next sc. \*Working into 2 rows below [(Ch 1. Skip next ch-1 sp. 1 dc in next dc) twice. Ch 1. Skip next ch-1 sp]. Working into last row, 1 sc in next sc. Rep from \* to last ch-1 sp and sc. Ch 1. Skip next ch-1 sp. 1 sc in last sc. Turn.

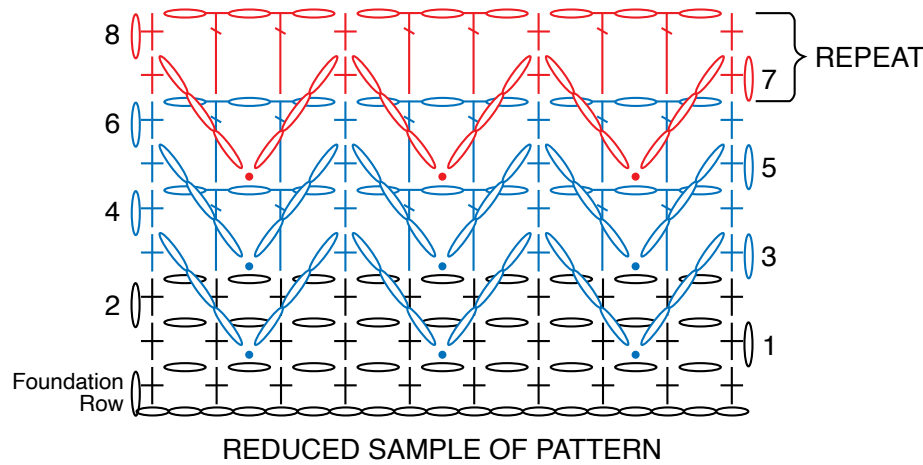
Keeping cont of Stripe Pat, inc 1 sc at each end of **next** row and every following **4th (4th-4th-4th-4th-alt)** row **8 (8-11-11-11-9)** times more, taking inc sts into sc-ch 1 pat. **59 (59-65-65-71-67)** sts.

**Size 4/5XL only:** Keeping cont of Stripe Pat, inc 1 sc at each end of every following 4th row 4 times more, taking inc sts into sc-ch 1 pat. 75 sts.

**All sizes:** Keeping cont of Stripe Pat, work even until Sleeve from beg measures **17 (17-18-18-17-16)" [43 (43-45.5-45.5-43-40.5) cm]**, ending on a RS row. Fasten off.

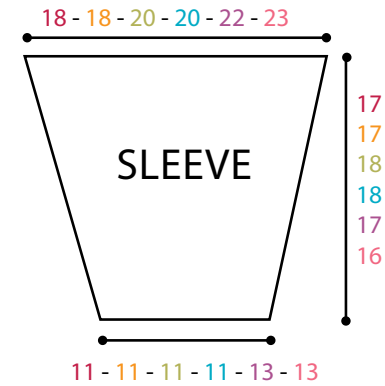
## FINISHING

Pin all pieces to measurements. Cover with a damp cloth leaving cloth to dry. Sew shoulder seams. Sew sleeves between markers. Sew side and sleeve seams.



### STITCH KEY

- = chain (ch)
- = slip stitch (sl st)
- ⊥ = single crochet (sc)
- ⌋ = double crochet (dc)



7½ - 8 - 7½    6½ - 7¼ - 8¼  
8 - 9½ - 10    11 - 10¼ - 10¾

