

KNIT PULLOVER AND TOQUE

SIZES

Chest measurement

4 yrs	24	ins	[61	cm]
6 yrs	26	ins	[66	cm]
8 yrs	28	ins	[71	cm]
10 yrs	30	ins	[76	cm]

Finished chest

4 yrs	28	ins	[71	cm]
6 yrs	31	ins	[78.5	cm]
8 yrs	33	ins	[84	cm]
10 yrs	35½	ins	[90	cm]

Note: Toque is sized 4-6 and 8-10 / La tuque est pour la taille 4-6 et 8-10.

ABBREVIATIONS

www.bernat.com/glossary.php

MATERIALS

Bernat Super Value

(Solids: 197 g/7 oz or Ombres: 142 g/5 oz)

Main Color (MC) (Solids/Solides)

Sizes

4 yrs	2 balls
6 yrs	2 balls
8 yrs	3 balls
10 yrs	4 balls

OR

Main Color (MC) (Ombres)

4 yrs	3 balls
6 yrs	3 balls
8 yrs	4 balls
10 yrs	4 balls

Contrast/Couleur A (Solid or Ombres)

4 yrs	1 ball
6 yrs	1 ball
8 yrs	1 ball
10 yrs	1 ball

Pullover: Sizes 4 mm (U.S. 6) and 5 mm (U.S. 8) circular knitting needles 24 ins [60 cm] long. Set of four sizes 4 mm (U.S. 6) and 5 mm (U.S. 8) knitting needles **or size needed to obtain gauge**. 4 st holders.

Toque: Set of four sizes 4 mm (U.S. 6) and 5 mm (U.S. 8) knitting needles **or size needed to obtain gauge**.

GAUGE: 18 sts and 24 rows = 4 ins [10 cm] with larger needles in stocking st.

INSTRUCTIONS: *The instructions are written for smallest size. If changes are necessary for larger sizes the instructions will be written thus ().*

Note: When working from chart, carry yarn not in use loosely across WS of work, but never over more than 5 sts. When it must pass over more than 5 sts, weave it over and under color in use on next st or at centre point of sts it passes over. The colors are never twisted around one another.

PULLOVER

BODY: With MC and smaller circular needle cast on 126 (**140-150-160**) sts. Join in rnd. Placing a marker on first st, work 2 ins [5 cm] in (K1. P1) ribbing.

Change to larger circular needle and knit in rnds until work from beg measures 10 (**11-13-15**) ins [25 (**28-33-38**) cm].

Next rnd: K5 (**5-6-6**). Slip these 5 (**5-6-6**) sts and last 5 (**5-6-6**) sts of previous rnd onto a st holder. 10 (**10-12-12**) sts on holder. K63 (**70-75-80**). Slip last 10 (**10-12-12**) sts just worked onto a st holder. Knit to end of rnd.

SLEEVES: With MC and set of four smaller needles, cast on 30 (**32-34-36**) sts. Divide these sts onto 3 needles. Join in rnd and placing a marker on first st, work 2 ins [5 cm] in (K1. P1) ribbing inc 6 (**8-8-8**) sts evenly around last rnd. 36 (**40-42-44**) sts.

Change to larger needles and knit in rnds inc 1 st each end of rnd on 5th and following 6th rnds until there are 48 (**56-60-66**) sts. Cont even until Sleeve from beg measures 11½ (**13-14-15½**) ins [29 (**33-35.5-39.5**) cm].

Next rnd: K5 (**5-6-6**). Slip these 5 (**5-6-6**) sts and last 5 (**5-6-6**) sts of previous rnd onto a st holder. 10 (**10-12-12**) sts on holder. Leave rem sts on a spare needle.

Yoke: With MC and larger circular needle *K38 (**46-48-54**) of sleeve. K53 (**60-63-68**) of body. Rep from * once. Mark last st as end of rnd. 182 (**212-222-244**) sts.

Next rnd: *K28 (**8-29-22**). K2tog. Rep from * to last 2 (**12-5-4**) sts. K2 (**12-5-4**). 176 (**192-215-234**) sts. Knit 1 (**2-2-3**) rnd(s) even.

Sizes 8 and 10 only: **Next rnd:** *K(28-21). K2tog. Rep from * to last (5-4) sts. K(5-4). 208 (**224**) sts.

All Sizes: Reading rnds from right to left, work Chart I to end of chart. 66 (**72-78-84**) sts. Break A.

Change to set of four smaller needles. With MC, knit 1 (**1-2-2**) rnd(s) even.

Next rnd: With MC, knit dec 0 (**0-2-4**) sts evenly around. 66 (**72-76-80**) sts. Proceed in (K1. P1) ribbing for 2½ ins [6 cm]. Cast off in ribbing. Fold neckband in half to WS and sew loosely in position. Graft underarm sts.

TOQUE: With MC and set of four smaller needles cast on 96 (**100**) sts. Divide these sts onto 3 needles. Join in rnd and placing a marker on first st, work 4 ins [10 cm] in (K1. P1) ribbing.

Change to set of four larger needles and knit 4 rnds.

Reading rnds from right to left work Chart II to end of chart. Break A.

Size 4-6 only: **Next rnd:** *K14. K2tog. Rep from * to end of rnd. 90 sts.

Both Sizes: Knit 3 (**5**) rnds even.

Next rnd: *K2tog. K8. Rep from * to end of rnd. 81 (**90**) sts.

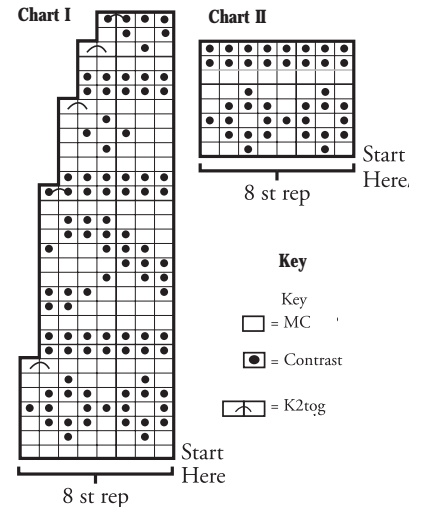
Knit 1 rnd.

Next rnd: *K2tog. K7. Rep from * to end of rnd. 72 (**80**) sts.

Knit 1 rnd.

Cont in this manner, dec 9 (**10**) sts on next and every alt rnd until 9 (**10**) sts rem. Break yarn leaving a long end. Draw end through rem sts and fasten securely.

Make pom-pom: Wind MC around 3 fingers approx 75 times. Remove from fingers and tie tightly in center. Cut through each side of loops. Trim to a smooth round shape. Sew to top of Toque.



P.O. Box 40 Listowel ON N4W 3H3

“home style... life style... your style.”