



Version 1



Version 2



Version 3

**ABBREVIATIONS:**

**Approx** =

Approximate(ly)

**Ch(s)** = Chain(s)

**Cont** = Continue

**Dc** = Double crochet

**Rem** = Remain(ing)

**Rep** = Repeat

**Rnd(s)** = Round(s)

**RS** = Right side

**Sc** = Single crochet

**Sl st(s)** = Slip stitch

**Sp** = Space

**St(s)** = Stitch(es)

**Tog** = Together

**WS** = Wrong side

**Yoh** = Yarn over hook

**MATERIALS**

**Caron® One Pound™** (16 oz/453.6 g; 812 yds/742 m)

**Version 1**

**Contrast A** Black (10503) **1 ball**

**Contrast B** Off White (10514) **2 balls**

**Contrast C** Ocean (10611) **2 balls**

**Version 2**

**Contrast A** Dk Grey Mix (10618) **1 ball**

**Contrast B** Cream (10589) **2 balls**

**Contrast C** Claret (10562) **2 balls**

**Version 3**

**Contrast A** Azure (10523) **1 ball**

**Contrast B** Sunflower (10549) **2 balls**

**Contrast C** Med Grey Mix (10617) **2 balls**

Size U.S. I/9 (5.5 mm) crochet hook **or size needed to obtain gauge.**

 CROCHET | SKILL LEVEL: **EASY**

**MEASUREMENTS**

Approx 50" x 65" [127 x 165 cm]

**GAUGE**

11 dc and 8 rows = 4" [10 cm].

1 Square = 9" [23 cm] square.

**INSTRUCTIONS**

**Square** (make 32)

See diagram on page 3.

With A, ch 5. Join with sl st to first ch to form ring.

**1st rnd:** (RS). Ch 3 (counts as dc here and throughout). 2 dc in ring. Ch 2. (3 dc in ring. Ch 2) 3 times. Join with sl st to top of ch-3.

**2nd rnd:** Sl st in each of next 2 dc and next ch-2 sp. Ch 3. (2 dc. Ch 2. 3 dc) in same ch-2 sp as last sl st. \*(3 dc. Ch 2. 3 dc) in next ch-2 sp. Rep from \* twice more. Join with sl st to top of ch-3.

**3rd rnd:** Sl st in each of next 2 dc and next ch-2 sp. Ch 3. (2 dc. Ch 2. 3 dc) in same ch-2 sp as last sl st. \*Skip next 3 dc. 3 dc in next sp. (3 dc. Ch 2. 3 dc) in next ch-2 sp. Rep from \* twice more. Skip next 3 dc. 3 dc in next sp. Join with sl st to top of ch-3.

**4th rnd:** Sl st in each of next 2 dc and next ch-2 sp. Ch 3. (2 dc. Ch 2. 3 dc) in same ch-2 sp as last sl st. \*(Skip next 3 dc. 3 dc in next sp) twice. (3 dc. Ch 2. 3 dc) in next ch-2 sp. Rep from \* twice more. (Skip next 3 dc. 3 dc in next sp) twice. Join with sl st to top of ch-3. Fasten off. Join B in first ch-2 sp.

**5th rnd:** With B, ch 3. (2 dc. Ch 2. 3 dc) in same ch-2 sp as last sl st. \*(Skip next 3 dc. 3 dc in next sp) 3 times. (3 dc. Ch 2. 3 dc) in next ch-2 sp. Rep from \* twice more. (Skip next 3 dc. 3 dc in next sp) 3 times. Join with sl st to top of ch-3.

**6th rnd:** Sl st in each of next 2 dc and next ch-2 sp. Ch 3. (2 dc. Ch 2. 3 dc) in same ch-2 sp as last sl st. \*(Skip next 3 dc. 3 dc in next sp) 4 times. (3 dc. Ch 2. 3 dc) in next ch-2 sp. Rep from \* twice more. (Skip next 3 dc. 3 dc in next sp)

4 times. Join with sl st to top of ch-3. Fasten off. Join C in first ch-2 sp.

**7th rnd:** With C, ch 3. (2 dc. Ch 2. 3 dc) in same ch-2 sp as last sl st. \*(Skip next 3 dc. 3 dc in next sp) 5 times. (3 dc. Ch 2. 3 dc) in next ch-2 sp. Rep from \* twice more. (Skip next 3 dc. 3 dc in next sp) 5 times. Join with sl st to top of ch-3.

**8th rnd:** Sl st in each of next 2 dc and next ch-2 sp. Ch 3. (2 dc. Ch 2. 3 dc) in same ch-2 sp as last sl st. \*(Skip next 3 dc. 3 dc in next sp) 6 times. (3 dc. Ch 2. 3 dc) in next ch-2 sp. Rep from \* twice more. (Skip next 3 dc. 3 dc in next sp) 6 times. Join with sl st to top of ch-3. Fasten off.

### Half Square (make 14)

See diagram on page 3.

**Note:** To join new color, work to last loops on hook of previous color. Yoh with new color, draw through rem loops and proceed with new color.

With A, ch 4. Join with sl st to first ch to form ring.

**1st row:** (WS). Ch 3 (counts as dc here and throughout). 3 dc in ring. Ch 2. 4 dc in ring. Turn.

**2nd row:** Ch 3. 3 dc in first sp. (3 dc. Ch 2. 3 dc) in ch-2 sp. Skip next 3 dc. 4 dc in last sp. Turn.

**3rd row:** Ch 3. 3 dc in first sp. Skip next 3 dc. 3 dc in next sp. (3 dc. Ch 2. 3 dc) in ch-2 sp. Skip next 3 dc. 3 dc in next sp. Skip next 3 dc. 4 dc in last sp. Turn.

**4th row:** Ch 3. 3 dc in first sp. (Skip next 3 dc. 3 dc in next sp) twice. (3 dc. Ch 2. 3 dc) in ch-2 sp. (Skip next 3 dc. 3 dc in next sp) twice. Skip next 3 dc. 4 dc in last sp. Join B. Break A. Turn.

**5th row:** Ch 3. 3 dc in first sp. (Skip next 3 dc. 3 dc in next sp) 3 times. (3 dc. Ch 2. 3 dc) in ch-2 sp. (Skip next 3 dc. 3 dc in next sp) 3 times. Skip next 3 dc. 4 dc in last sp. Turn.

**6th row:** Ch 3. 3 dc in first sp. (Skip next 3 dc. 3 dc in next sp) 4 times. (3 dc. Ch 2. 3 dc) in ch-2 sp. (Skip next 3 dc. 3 dc in next sp) 4 times. Skip next 3 dc. 4 dc in last sp. Join C. Break B. Turn.

**7th row:** Ch 3. 3 dc in first sp. (Skip next 3 dc. 3 dc in next sp) 5 times. (3 dc. Ch 2. 3 dc) in ch-2 sp. (Skip next 3 dc. 3 dc in next sp) 5 times. Skip next 3 dc. 4 dc in last sp. Turn.

**8th row:** Ch 3. 3 dc in first sp. (Skip next 3 dc. 3 dc in next sp) 6 times.

(3 dc. Ch 2. 3 dc) in ch-2 sp. (Skip next 3 dc. 3 dc in next sp) 6 times. Skip next 3 dc. 4 dc in last sp. Turn. Fasten off.

### Quarter Square (make 4)

See diagram on page 3.

**Note:** To join new color, work to last loops on hook of previous color. Yoh with new color, draw through rem loops and proceed with new color.

With A, ch 4. Join with sl st to first ch to form ring.

**1st row:** (WS). Ch 3 (counts as dc here and throughout). 4 dc in ring. Turn.

**2nd row:** Ch 3. 3 dc in first sp. Skip next 3 dc. 4 dc in last sp. Turn.

**3rd row:** Ch 3. 3 dc in first sp. Skip next 3 dc. 3 dc in next sp. Skip next 3 dc. 4 dc in last sp. Turn.

**4th row:** Ch 3. 3 dc in first sp. (Skip next 3 dc. 3 dc in next sp) twice. Skip next 3 dc. 4 dc in last sp. Join B. Break A. Turn.

**5th row:** Ch 3. 3 dc in first sp. (Skip next 3 dc. 3 dc in next sp) 3 times. Skip next 3 dc. 4 dc in last sp. Turn.

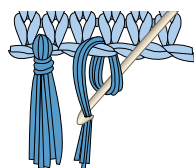
**6th row:** Ch 3. 3 dc in first sp. (Skip next 3 dc. 3 dc in next sp)

4 times. Skip next 3 dc. 4 dc in last sp. Join C. Break B. Turn.

**7th row:** Ch 3. 3 dc in first sp. (Skip next 3 dc. 3 dc in next sp) 5 times. Skip next 3 dc. 4 dc in last sp. Turn.

**8th row:** Ch 3. 3 dc in first sp. (Skip next 3 dc. 3 dc in next sp) 6 times. Skip next 3 dc. 4 dc in last sp. Turn. Fasten off.

**Fringe:** Cut strands of B 10" [25.5 cm] long. Taking 3 strands tog, fold in half and knot into fringe in every other st across Bottom and Top Edging. Trim fringe evenly.



## FINISHING

**Joining:** With B, sl st Squares (Full, Half and Quarter) tog on the RS through back loops to create ridge detail between each Square. Join Squares tog into Strips diagonally in one direction first and then join Strips tog diagonally in opposite direction (see assembly diagram).

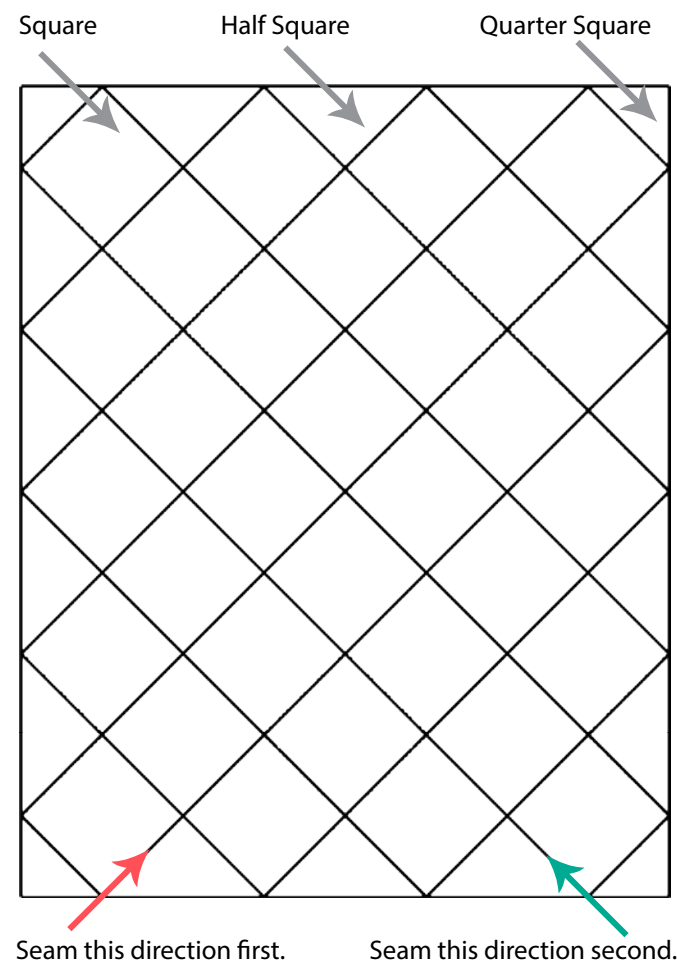
**Bottom Edging: 1st row:** (RS). Join B with sl st at corner to work along bottom edge of Blanket. Ch 1. Work 3 sc around side of each st to end of row. Turn.

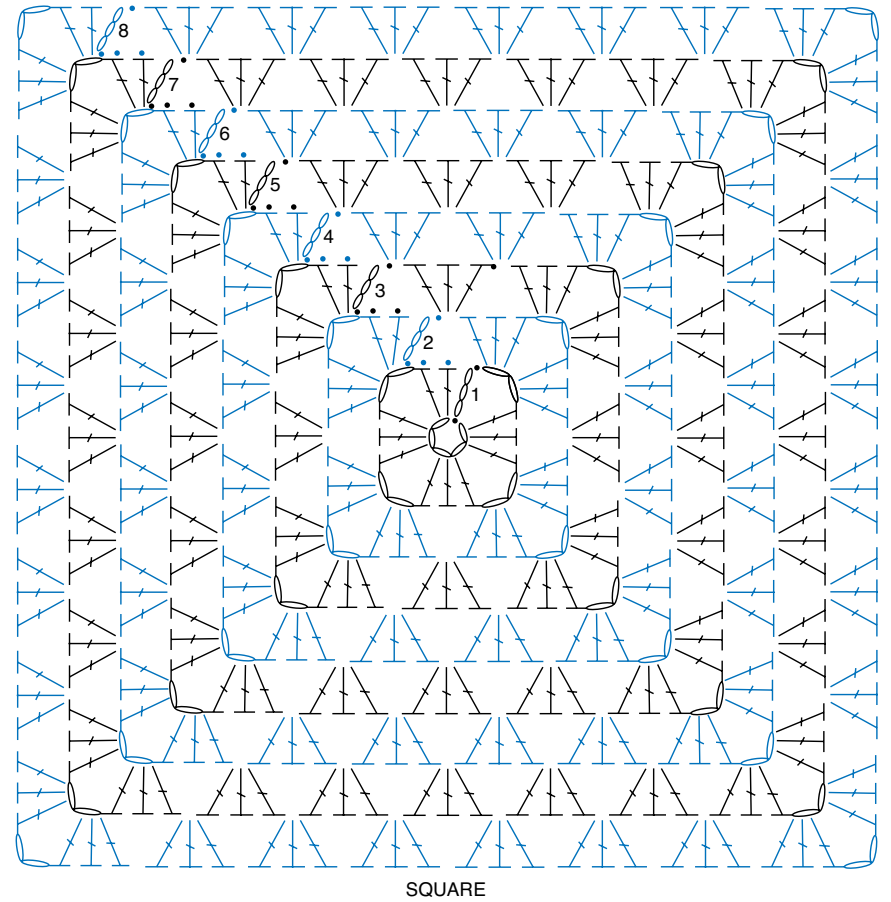
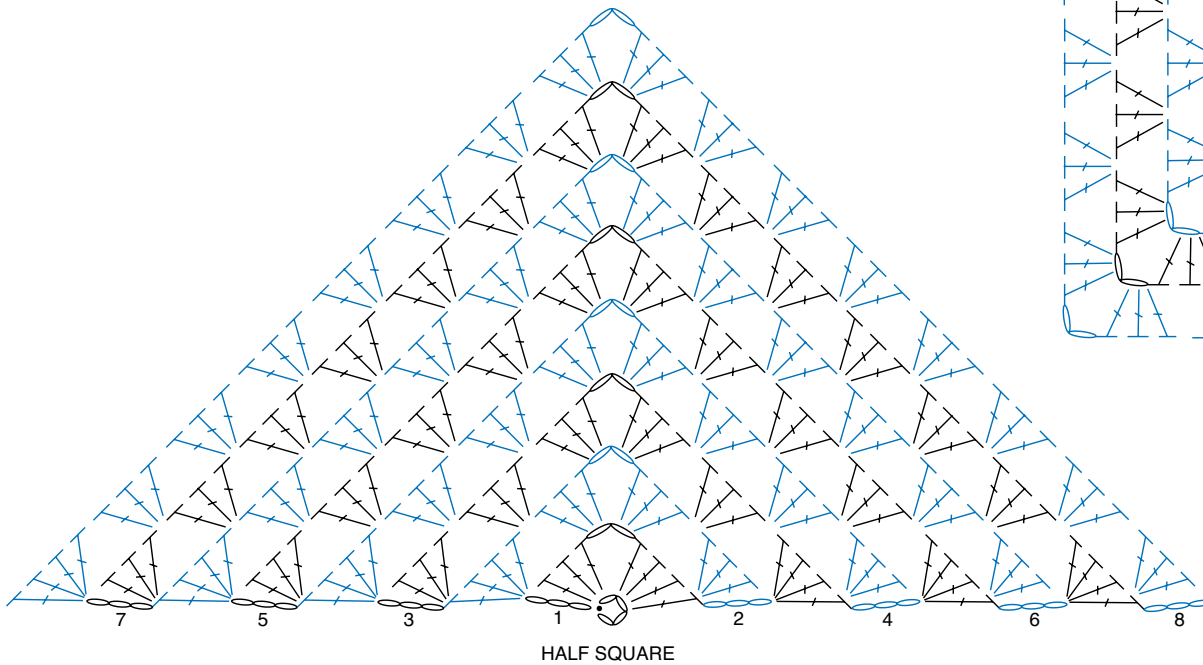
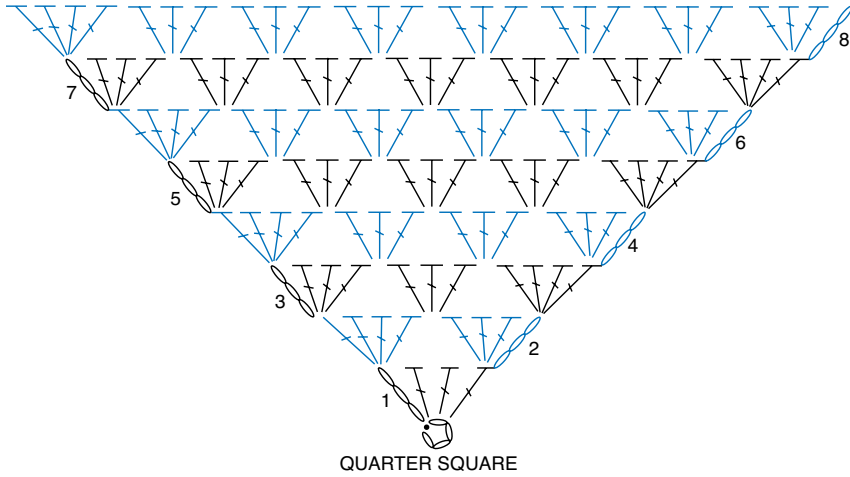
**2nd row:** Ch 1. 1 sc in each sc to end of row. Turn.



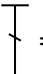
**3rd row:** As 2nd row. Fasten off.

**Top Edging:** Work as for Bottom Edging across top edge.

## Assembly Diagram





- STITCH KEY**
-  = chain (ch)
  -  = slip stitch (sl st)
  -  = double crochet (dc)