



KNIT | SKILL LEVEL: INTERMEDIATE

## ABBREVIATIONS

**Alt** = Alternate(ing)

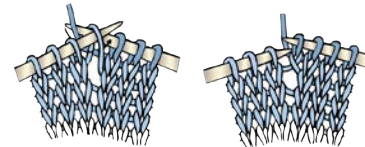
**Approx** = Approximate(ly)

**Inc** = Inceas(e)(es)(ing)

**K** = Knit

**K2tog** = Knit next 2 stitches together

**M1** = Make 1 stitch by picking up horizontal loop lying before next stitch and knitting into back of loop



**P** = Purl

**P2sso** = Pass 2 slipped stitches over

**Pat** = Pattern

**Rep** = Repeat

**RS** = Right side

**SI2K** = Slip next 2 stitches knitwise

**SM** = Slip marker

**Ssk** = Slip next 2 stitches knitwise one at a time. Pass them back onto left-hand needle, then knit through back loops together.

**St(s)** = Stitch(es)

**WS** = Wrong side

**Yo** = Yarn over

## MEASUREMENTS

Approx 45" [114.5 cm] wide x 26" [66 cm] deep.

## GAUGE

22 sts and 30 rows = 4" [10 cm] in stocking st.

## INSTRUCTIONS

Cast on 7 sts.

**1st row:** (RS). K3. yo. K1. yo. K3. 9 sts.

**2nd row:** K3. Purl to last 3 sts. K3.

**3rd row:** K3. yo. K1. yo. Place marker before next st. K1. yo. K1. yo. K3. 13 sts.

**4th row:** As 2nd row.

**5th row:** K3. yo. Knit to marker. yo. K1. yo. Knit to last 3 sts. yo. K3.

**6th row:** As 2nd row.

Rep 5th and 6th rows, inc 4 sts on next and every following alt row until there are 125 sts, ending on a WS row.

## MATERIALS

Patons® Grace™ (1.75 oz/50 g; 136 yds/125 m)

Ginger (62027)

5 balls

Size U.S. 6 (4 mm) circular knitting needle 36" [91.5 cm] long or size needed to obtain gauge. Stitch marker.

**Note:** Move marker every row, noting marker is placed on needle before center st.

**Proceed in Lace Pat** (see chart on page 3):

**1st row:** K3. yo. K2tog. K2. yo. \*K1. yo. K2. ssk. P1. K2tog. K2. yo.\* Rep from \* to \* until 5 sts before marker.

K1. yo. K2. ssk. yo. SM. K1. yo. K2tog. K2. yo. Rep from \* to \* until last 8 sts. K1. yo. K2. ssk. yo. K3. 129 sts.

**2nd and alt rows:** K3. Knit all knit sts and purl all purl and yo as they appear to last 3 sts. K3.

**3rd row:** K3. yo. P1. K2tog. K1. yo. K3. \*yo. K1. ssk. P1. K2tog. K1. yo. K3.\* Rep from \* to \* until 4 sts before marker. yo. K1. ssk. P1. yo. SM. K1. yo. P1. K2tog. K1. yo. K3. Rep from \* to \* until last 7 sts. yo. K1. ssk. P1. yo. K3. 133 sts.

**5th row:** K3. yo. K1. \*P1. K2tog. yo. K5. yo. ssk.\* Rep from \* to \* until 2 sts before marker. P1. K1. yo. SM. K1. yo. K1. Rep from \* to \* until last 5 sts. P1. K1. yo. K3. 137 sts.

**7th row:** K3. \*yo. K2. P1. K2. yo. ssk. K1. K2tog.\* Rep from \* to \* until 5 sts before marker. yo. K2. P1. K2. yo. SM. K1. Rep from \* to \* until last 8 sts. yo. K2. P1. K2. yo. K3. 141 sts.

**9th row:** K3. \*yo. K3. P1. K3. yo.

Sl2K. K1. p2sso.\* Rep from \* to \* until 7 sts before marker. yo. K3. P1. K3. yo. SM. K1. Rep from \* to \* until last 10 sts. yo. K3. P1. K3. yo. K3. 145 sts.

**10th row:** As 2nd row. Rep 1st to 10th rows 9 times more. 325 sts.

Proceed in Border Pat as follows:  
**1st and 2nd rows:** As 1st and 2nd rows of Lace Pat. 329 sts.

**3rd row:** K3. yo. K1. \*K2tog. K1. yo. K3. yo. K1. ssk. P1.\* Rep from \* to \* until 10 sts before marker. K2tog. K1. yo. K3. yo. K1. ssk. K1. yo. SM. K1. yo. K1. Rep from \* to \* until last 13 sts. K2tog. K1. yo. K3. yo. K1. ssk. K1. yo. K3. 333 sts.

**4th row:** As 2nd row.

**5th row:** K3. yo. K2. \*K2tog. yo. K5. yo. ssk. P1.\* Rep from \* to \* until 11 sts before marker. K2tog. yo. K5. yo. ssk. K2. yo. SM. K1. yo. K2. Rep from \* to \* until last 14 sts. K2tog. yo. K5. yo. ssk. K2. yo. K3. 337 sts.

**6th and alt rows:** K3. Purl to last 3 sts. K3.

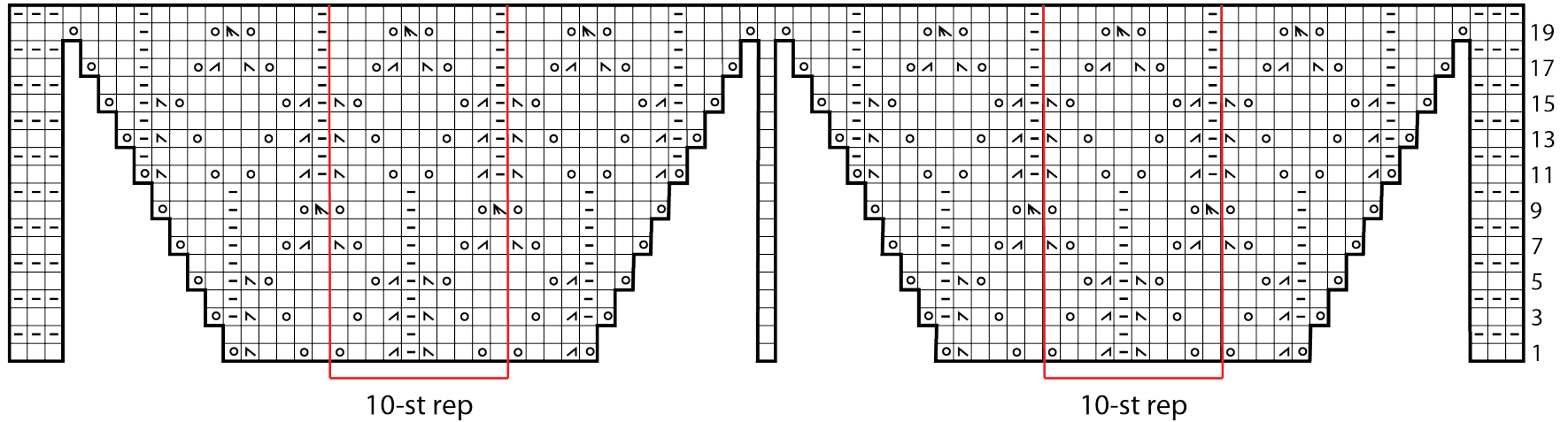
**7th row:** K3. yo. K2. ssk. \*yo. K7. yo. Sl2K. K1. p2sso.\* Rep from \* to \* until 13 sts before marker. yo. K7. yo. K2. K2tog. K2. yo. SM. K1. yo. K2. ssk. Rep from \* to \* until last 14 sts. yo. K7. yo. K2tog. K2. yo. K3. 341 sts.

**9th row:** K3. yo. K3. ssk. \*yo. K3. M1. K1. M1. K3. yo. Sl2K. K1. p2sso.\* Rep from \* to \* until 13 sts before marker. yo. K3. M1. K1. M1. K3. yo. K1. K2tog. K3. yo. SM. K1. yo. K3. ssk. Rep from \* to \* until last 15 sts. yo. K3. M1. K1. M1. K3. yo. K2tog. K3. yo. K3. 415 sts.

**11th row:** K3. yo. K4. ssk. \*yo. K4. M1. K1. M1. K4. yo. Sl2K. K1. p2sso.\* Rep from \* to \* until 15 sts before marker. yo. K4. M1. K1. M1. K4. yo. K2tog. K4. yo. SM. K1. yo. K4. ssk. Rep from \* to \* until last 18 sts. yo. K4. M1. K1. M1. K4. yo. K2tog. K4. yo. K3. 483 sts.

Cast off loosely knitwise (WS).





Key

- = Knit on RS. Purl on WS
- ▣ = Purl on RS. Knit on WS.
- ⊖ = yo
- ⊗ = ssk
- ⊠ = K2tog
- ⊡ = Sl2K. K1. p2sso.

