



CROCHET | SKILL LEVEL: INTERMEDIATE

## ABBREVIATIONS

**Approx** = Approximately

**Ch** = Chain(s)

**Dc** = Double crochet

**Mosaic dc** = Working in front of chain spaces; work 1 dc in skipped sc 3 rows below. Skip next ch-2 space (behind mosaic dc).

**Pat** = Pattern

**Rep** = Repeat

**Rnd(s)** = Round(s)

**RS** = Right side

**Sc** = Single crochet

**Sl st** = Slip stitch

**Sp(s)** = Space(s)

**St(s)** = Stitch(es)

**Tog** = Together

**WS** = Wrong side

## MATERIALS

**Red Heart® Super Saver® O'Go™** (7 oz/198 g; 364 yds/333 m)

**Main Color (MC) White** (7100)      **6 O'Gos or 2035 yds/1861 m**

**Contrast A Soft Navy** (7180)      **3 O'Gos or 921 yds/842 m**



**Red Heart® Super Saver® O'Go™** (5 oz/141 g; 236 yds/215 m)

**Contrast B Peacock** (7155)      **3 O'Gos or 689 yds/630 m**



Size U.S. I/9 (5.5 mm) crochet hook **or size needed to obtain gauge.**

## MEASUREMENTS

Approx 51" x 64" [129.5 x 162.5 cm], excluding fringe.

## GAUGE

12 sc and 15 rows = 4" [10 cm].

## INSTRUCTIONS

### Notes:

- To begin working with the O'Go format, carefully cut plastic tie where the ends of the O'Go meet.
- Pull tie to remove.
- Start crocheting!
- Use O'Gos to self-stripe as you go.

- To change colors, work to last 2 loops on hook of previous stitch and draw new color through.
- When working Mosaic Heart Pat, carry color not in use loosely up side of work, keeping color change to WS.
- Each skipped sc has ch-2 worked above it for 2 rows. This establishes the 'gap' where Mosaic Dc will later be worked
- Mosaic Dc always replaces sc directly behind it on working row
- WS of your work maintains alternating 2-row striped pattern because you are working *in front* of chain spaces each time you work Mosaic Dc - you are never working around chain-spaces. The chain-spaces sit *behind* Mosaic Dc.
- Mosaic Heart Pat worked over foundation ch multiple of 18 ch + 6.
- Blanket is worked in 2 Halves and seamed together in finishing.

### Mosaic Heart Pat

(See Chart on page 4).

**1st row:** With Color 1, ch 1. 1 sc in each st across. Turn.

**2nd row:** With Color 1, ch 1. 1 sc in each each st across. Turn.

**3rd row:** With MC, ch 1. 1 sc in each of first 2 sc. \*1 sc in each of next 5 sc. Ch 2. Skip next sc. 1 sc in each of next 7 sc. Ch 2. Skip next sc. 1 sc in each of next 4 sc. Rep from \* to last 3 sc. 1 sc in each of last 3 sc. Turn.

**4th row:** With MC, ch 1. 1 sc in each of first 3 sc. \*1 sc in each of next 4 sc. Ch 2. Skip next ch-2 sp. 1 sc in each of next 7 sc. Ch 2. Skip next ch-2 sp. 1 sc in each of next 5 sc. Rep from \* to last 2 sc. 1 sc in each of last 2 sc. Turn.

**5th row:** With Color 1, ch 1. 1 sc in each of first 2 sc. \*1 sc in each of next 5 sc. Mosaic dc. Ch 2. Skip next sc. 1 sc in each of next 5 sc. Ch 2. Skip next sc. Mosaic dc. 1 sc in each of next 4 sc. Rep from \* to last 3 sc. 1 sc in each of last 3 sc. Turn.

**6th row:** With Color 1, ch 1. 1 sc in each of first 3 sc. \*1 sc in each of next 5 sts. Ch 2. Skip next ch-2 sp. 1 sc in each of next 5 sc. Ch 2. Skip next ch-2 sp. 1 sc in each of next 6 sts. Rep from \* to last 2 sc. 1 sc in each of last 2 sc. Turn.

**7th row:** With MC, ch 1. 1 sc in each of first 2 sc. \*1 sc in each of next 2 sc. Ch 2. Skip next sc. 1 sc in each of next 3 sc. Mosaic dc. Ch 2.

Skip next sc. 1 sc in each of next 3 sc. Ch 2. Skip next sc. Mosaic dc. 1 sc in each of next 3 sc. Ch 2. Skip next sc. 1 sc in next sc. Rep from \* to last 3 sc. 1 sc in each of last 3 sc. Turn.

**8th row:** With MC, ch 1. 1 sc in each of first 3 sc. \*1 sc in next sc. Ch 2. Skip next ch-2 sp. 1 sc in each of next 4 sts. Ch 2. Skip next ch-2 sp. 1 sc in each of next 3 sc. Ch 2. Skip next ch-2 sp. 1 sc in each of next 4 sts. Ch 2. Skip next ch-2 sp. 1 sc in each of next 2 sc. Rep from \* to last 2 sc. 1 sc in each of last 2 sc. Turn.

**9th row:** With Color 1, ch 1. 1 sc in each of first 2 sc. \*1 sc in each of next 2 sc. Mosaic dc. Ch 2. Skip next sc. (1 sc in each of next 3 sc. Mosaic dc) twice. 1 sc in each of next 3 sc. Ch 2. Skip next sc. Mosaic dc. 1 sc in next sc. Rep from \* to last 3 sc. 1 sc in each of last 3 sc. Turn.

**10th row:** With Color 1, ch 1. 1 sc in each of first 3 sc. \*1 sc in each of next 2 sts. Ch 2. Skip next ch-2 sp. 1 sc in each of next 11 sts sc. Ch 2. Skip next ch-2 sp. 1 sc in each of next 3 sts. Rep from \* to last 2 sc. 1 sc in each of last 2 sc. Turn.

**11th row:** With MC, ch 1. 1 sc in each of first 2 sc. \*Ch 2. Skip next sc. 1 sc in each of next 2 sc. Mosaic dc. Ch 2. Skip next sc. 1 sc in each of next 9 sc. Ch 2. Skip next sc. Mosaic dc. 1 sc in each of next 2 sc. Rep from \* to last 3 sc. Ch 2. Skip next sc. 1 sc in each of last 2 sc. Turn.

**12th row:** With MC, ch 1. 1 sc in each of first 2 sc. Ch 2. Skip next ch-2 sp. \*1 sc in each of next 3 sc. Ch 2. Skip next ch-2 sp. 1 sc in each of next 9 sc. Ch 2. Skip next ch-2 sp. 1 sc in each of next 3 sts. Ch 2. Skip next ch-2 sp. Rep from \* to last 2 sc. 1 sc in each of last 2 sc. Turn.

**13th row:** With Color 1, ch 1. 1 sc in each of first 2 sc. \*Mosaic dc. Ch 2. Skip next sc. 1 sc in each of next 2 sc. Mosaic dc. 1 sc in each of next 9 sc. Mosaic dc. 1 sc in each of next 2 sc. Ch 2. Skip next sc. Rep from \* to last 3 sc. Mosaic dc. 1 sc in each of last 2 sc. Turn.

**14th row:** With Color 1, ch 1. 1 sc in each of first 3 sts. \*Ch 2. Skip next ch-2 sp. 1 sc in each of next 15 sts. Ch 2. Skip next ch-2 sp. 1 sc in next st. Rep from \* to last 2 sc. 1 sc in each of last 2 sc. Turn.

**15th row:** With MC, ch 1. 1 sc in each of first 2 sc. \*Ch 2. Skip next sc. Mosaic dc. Ch 2. Skip next sc. 1 sc in each of next 13 sc. Ch 2. Skip next sc. Mosaic dc. Rep from \* to last 3 sc. Ch 2. Skip next sc. 1 sc in each of last 2 sc. Turn.

**16th row:** With MC, ch 1. 1 sc in each of first 2 sc. Ch 2. Skip next ch-2 sp. \*1 sc in next st. Ch 2. Skip next ch-2 sp. 1 sc in each of next 13 sc. Ch 2. Skip next ch-2 sp. 1 sc in next st. Ch 2. Skip next ch-2 sp. Rep from \* to last 2 sc. 1 sc in each of last 2 sc. Turn.

**17th row:** With Color 1, ch 1. 1 sc in each of first 2 sc. \*Mosaic dc. Ch 2. Skip next sc. Mosaic dc. 1 sc in each of next 13 sc. Mosaic dc. Ch 2. Skip next sc. Rep from \* to last 3 sc. Mosaic dc. 1 sc in each of last 2 sc. Turn.

**18th row:** With Color 1, ch 1. 1 sc in each of first 3 sts. \*Ch 2. Skip next ch-2 sp. 1 sc in each of next 15 sts. Ch 2. Skip next ch-2 sp. 1 sc in next sc. Rep from \* to last 2 sc. 1 sc in each of last 2 sc. Turn.

**19th row:** With MC, ch 1. 1 sc in each of first 2 sc. \*Ch 2. Skip next sc. Mosaic dc. (1 sc in each of next 2 sc. Ch 2. Skip next st) twice. 1 sc in each of next 3 sc. (Ch 2. Skip next

sc. 1 sc in each of next 2 sc) twice. Mosaic dc. Rep from \* to last 3 sc. Ch 2. Skip next sc. 1 sc in each of next 2 sc. Turn.

**20th row:** With MC, ch 1. 1 sc in each of first 2 sc. Ch 2. Skip next ch-2 sp. \*(1 sc in each of next 3 sts. Ch 2. Skip next ch-2 sp. 1 sc in each of next 2 sc. Ch 2. Skip next ch-2 sp) twice. 1 sc in each of next 3 sts. Ch 2. Skip next ch-2 sp. Rep from \* to last 2 sc. 1 sc in each of last 2 sc.

**21st row:** With Color 1, ch 1. 1 sc in each of first 2 sts. \*Mosaic dc. 1 sc in each of next 2 sc. Ch 2. Skip next sc. Mosaic dc. 1 sc in each of next 2 sc. Mosaic dc. Ch 2. Skip next sc. 1 sc in next sc. Ch 2. Skip next sc. Mosaic dc. 1 sc in each of next 2 sc. Mosaic dc. Ch 2. Skip next sc. 1 sc in each of next 2 sc. Rep from \* to last ch-2 sp. Mosaic dc. 1 sc in each of last 2 sc. Turn.

**22nd row:** With Color 1, ch 1. 1 sc in each of first 3 sts. \*1 sc in each of next 2 sc. Ch 2. Skip next ch-2 sp. 1 sc in each of next 4 sts. Ch 2. Skip next ch-2 sp. 1 sc in next sc. Ch 2. Skip next ch-2 sp. 1 sc in each of next 4 sts. Ch 2. Skip next ch-2 sp. 1 sc in each of next 3 sts. Rep from \* to last 2 sc. 1 sc in each of last 2 sc. Turn.

**23rd row:** With MC, ch 1. 1 sc in each of first 2 sc. \*1 sc in each of next 2 sc. (Ch 2. Skip next sc. Mosaic dc. 1 sc in each of next 4 sc. Mosaic dc) twice. Ch 2. Skip next sc. 1 sc in next sc. Rep from \* to last 3 sc. 1 sc in each of last 3 sc. Turn.

**24th row:** With MC, ch 1. 1 sc in each of first 3 sc. \*1 sc in next sc. Ch 2. Skip next ch-2 sp. (1 sc in each of next 6 sts. Ch 2. Skip next ch-2 sp) twice. 1 sc in each of next 2 sc. Rep from \* to last 2 sc. 1 sc in each of last 2 sc. Turn.

**25th row:** With Color 1, ch 1. 1 sc in each of first 2 sc. \*1 sc in each of next 2 sc. Mosaic dc. (1 sc in each of next 6 sc. Mosaic dc) twice. 1 sc in next sc. Rep from \* to last 3 sc. 1 sc in each of last 3 sc. Turn.

**26th row:** With Color 1, ch 1. 1 sc in each st to end of row. Turn. These 26 rows form Mosaic Heart Pat.

## BLANKET HALF (make 2)

With B, ch 150.

**1st row:** (RS). 1 sc in 2nd ch from hook. 1 sc in each ch to end of chain. Turn. 149 sc.

**2nd to 26th rows:** With B as Color 1, work 2nd to 26th rows of Mosaic Heart Pat, noting 2nd row is WS.

**27th to 52nd rows:** With A as Color 1, work 1st to 26th rows of Mosaic Heart Pat, noting 27th row is RS.

**53rd to 78th rows:** With B as Color 1, work 1st to 26th rows of Mosaic Heart Pat, noting 53rd row is RS.

**79th to 84th rows:** With A, ch 1. 1 sc in each sc to end of row, noting 79th row is RS. Turn.

Join MC. Break A.

**85th to 90th rows:** With MC, ch 1. 1 sc in each sc to end of row, noting 85th row is RS. Turn.

Join A. Break MC.

**91st to 114th rows:** Rep 79th to 90th rows twice more.

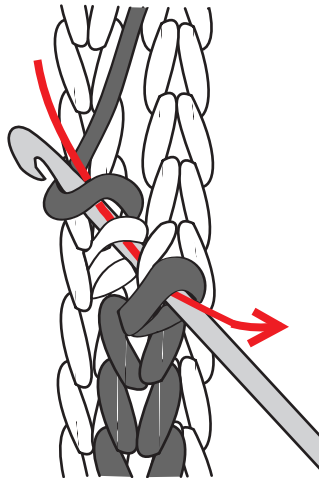
**115th to 117th rows:** With A, ch 1. 1 sc in each sc to end of row. Turn. Fasten off.

## FINISHING

**Seaming with Flat Sl St Join:** (RS). Turn 1 Blanket Half so pieces are mirrored (as shown in photo). With A, sl st last row of Blanket Halves tog, working through back loops only and keeping working yarn to WS of work to create a flat sl st chain detail on RS of work (see diagram on page 4).

## Flat Sl St Joining Diagram

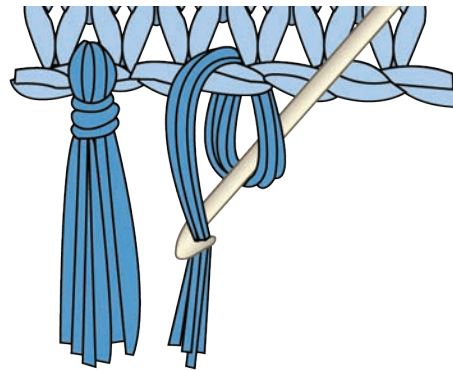
**Note:** Keep working yarn to WS of work so only flat sl st chain is visible on RS.



**Edging: 1st rnd:** (RS). Join MC with sl st to any corner of Blanket. Ch 1. Work sc evenly around Blanket, working around yarn carried loosely up side of work to enclose it and working (1 sc. Ch 2. 1 sc) in each corner. Join with sl st to first sc.

**2nd and 3rd rnds:** Ch 1. Work 1 sc in each sc around, working (1 sc. Ch 2. 1 sc) in each ch-2 sp. Join with sl st to first sc. Fasten off.

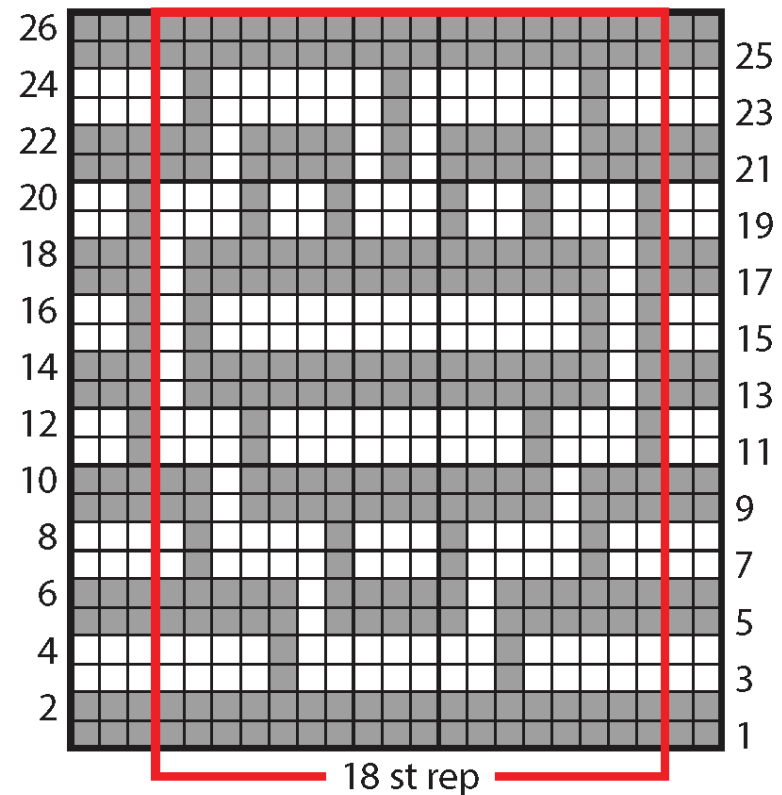
**Fringe:** Cut lengths of MC 14" [35.5 cm] long. Taking 3 strands tog, knot into fringe in every other st along top and bottom edges of Blanket (as shown in photo). Trim fringe evenly.



## How to read Mosaic Chart:

- Each square of chart represents 1 stitch.
- Right side rows (odd numbered rows) are read from right to left. Wrong side rows (even numbered rows) are read from left to right.
- Each row is worked in one color only. First stitch of chart indicates the color to be used in that row.
- When a contrast color appears (eg: white square in a gray row) work as "ch-2. Skip next st".

- On right side rows when a ch-2 sp appears, work Mosaic dc into skipped st 3 rows below.



## KEY

- = Color 1
- = Main Color (MC)