



MEDIUM
4 CROCHET | SKILL LEVEL: **EASY**

ABBREVIATIONS

- Approx** = Approximately
- Beg** = Begin(ning)
- Ch** = Chain(s)
- Dc** = Double crochet
- Pat** = Pattern
- Rem** = Remain(ning)
- Rep** = Repeat
- Rnd(s)** = Round(s)
- RS** = Right side
- Sc** = Single crochet
- Sc2tog** = Draw up a loop in each of next 2 stitches. Yoh and draw through all loops on hook.
- Sl st(s)** = Slip stitch(es)
- Sp(s)** = Space(s)
- St(s)** = Stitch(es)
- Tog** = Together
- WS** = Wrong side
- Yoh** = Yarn over hook

Looking for the original pattern? You can find it [here](#).

MATERIALS

Red Heart® Super Saver® O'Go™ (Solids: 7 oz/198 g; 364 yds/333 m; Prints: 5 oz/141 g; 236 yds/215 m)

Sizes	XS/S	M	L	XL	2/3XL	4/5XL	
Main Color (MC) Black (7120)	2	2	2	2	2	3	O'Gos
Contrast A, B, C, D and E: Jeweltone (7195)	4	4	5	5	5	8	O'Gos



Size U.S. 7 (4.5 mm) crochet hook **or size needed to obtain gauge.**
 Yarn needle.

SIZES

To fit bust measurement		Finished bust	
XS/S	28-34" [71-86.5 cm]	XS/S	39¾" [101 cm]
M	36-38" [91.5-96.5 cm]	M	39¾" [101 cm]
L	40-42" [101.5-106.5 cm]	L	52¼" [132.5 cm]
XL	44-46" [112-117 cm]	XL	52¼" [132.5 cm]
2/3XL	48-54" [122-137 cm]	2/3XL	52¼" [132.5 cm]
4/5XL	56-62" [142-157.5 cm]	4/5XL	64¾" [164.5 cm]

GAUGES

14 sc and 15 rows = 4" [10 cm].
Square Motif = Approx 6¼" [16 cm] square.

INSTRUCTIONS

Notes:

- To begin working with the O'Go format, carefully cut plastic tie where the ends of the O'Go meet.
- Pull tie to remove.
- For this pattern, colors can be easily separated by gently pulling apart and cutting at the color transition. Each color is ready to use. Follow color guide shown in Materials section for each O'Go (Contrast A, B, C, D and E). You may find it helpful to place each color section in its own resealable (zip lock) bag and label each bag A, B, C, D and E.
- RS of work is facing when working rnds/rows.
- When working all Motifs - as Color 1, Color 2, Color 3 and Color 4 is noted, choose Contrast A, B, C, D or E.
- Use MC for last rnd/row of all Motifs.
- Try to divide use of Contrast A, B, C, D and E equally.

SQUARE MOTIF

[Make **25** (25-34-34-46)]

Notes:

- Ch 3 at beg of rnd counts as dc.
- Ch 6 at beg of rnds counts as dc and ch-3 sp.
- Join all rnds with sl st to 3rd ch of ch-6 unless otherwise indicated.

With Color 1, ch 4. Join with sl st to first ch to form ring. See diagram on page 3.

1st rnd: (RS). Ch 6. (3 dc in ring. Ch 3) 3 times. 2 dc in ring. Join. Fasten off. 12 dc and 4 ch-3 sps.

2nd rnd: Join Color 2 in any ch-3 sp. Ch 6. 3 dc in same ch-3 sp. *Ch 1. (3 dc. Ch 3. 3 dc) in next ch-3 sp. Rep from * twice. Ch 1. 2 dc in first ch-3 sp. Join. Fasten off. 21 dc, 4 ch-1 sps and 4 ch-3 sps.

3rd rnd: Join Color 3 in any ch-3 sp. Ch 6. 3 dc in same ch-3 sp. *Ch 1. 3 dc in next ch-1 sp. Ch 1. (3 dc. Ch 3. 3 dc) in next ch-3 sp. Rep from * twice more. Ch 1. 3 dc in last ch-1 sp. Ch 1. 2 dc in first ch-3 sp. Join. Fasten off. 36 dc, 8 ch-1 sps and 4 ch-3 sps.

4th rnd: Join Color 4 in any ch-3 sp. Ch 6. 3 dc in same ch-2 sp. *(Ch 1. 3 dc) in each ch-1 sp across to next ch-3 sp. Ch 1. (3 dc. Ch 3.

3 dc) in next ch-3 sp. Rep from * twice. (Ch 1. 3 dc) in each ch-1 sp across to next ch-3 sp. Ch 1. 2 dc in first ch-3 sp. Join. Fasten off. 48 dc, 12 ch-1 sps and 4 ch-3 sps.

5th rnd: With MC, as 4th rnd. 60 dc, 16 ch-1 sps and 4 ch-3 sps.

TRIANGLE MOTIF (make 2)

Note: Ch 3 **does not** count as st.

With Color 1, ch 4. Join with sl st to first ch form ring. See diagram on page 3.

1st row: (RS). Ch 3 (counts as first ch-3 sp). (3 dc. Ch 3. 3 dc) all in ring. Ch 3 (counts as last ch-3 sp). Sl st in ring. Fasten off. 6 dc and 3 ch-3 sps.

2nd row: Join Color 2 in first ch-3 sp. (Ch 3. 3 dc) all in same ch-3 sp – Right Edge made. (3 dc. Ch 3. 3 dc) in next ch-3 sp – Corner made. (3 dc. Ch 3. Sl st) all in last ch-3 sp — Left Edge made. Fasten off. 12 dc and 3 ch-3 sps.

3rd row: Join Color 3 in first ch-3 sp. (Right Edge) once. 3 dc between next 2 groups of 3-dc. (Corner) once. 3 dc between next 2 groups of 3-dc. (Left Edge) once. Fasten off. 18 dc and 3 ch-3 sps.

4th row: Join Color 4 in first ch-3 sp. (Right Edge) once. 3 dc between each 3-dc group to Corner ch-3 sp. (Corner) once. 3 dc between each 3-dc group to last ch-3 sp. (Left Edge) once. Fasten off. 24 dc and 3 ch-3 sps.

5th row: With MC, as 4th row. 30 dc and 3 ch-3 sps.

HALF SQUARE MOTIF

[Make **6** (6-0-0-8)]

With Color 1, ch 4. Join with sl st to first ch to form a ring. See diagram on page 3.

1st row: (RS). Ch 3 (counts as first ch-3 sp). (1 dc. Ch 3. 3 dc. Ch 3. 1 dc) all in ring. Ch 3 (counts as last ch-3 sp). Slip st in ring. Fasten off.

2nd row: Join Color 2 in first ch-3 sp. (Ch 3. 1 dc) all in same ch-3 sp. (3 dc. Ch 3. 3 dc) all in next ch-3 sp — Corner made. (Corner) once more. (1 dc. Ch 3. Sl st) all in last ch-3 sp. Fasten off.

3rd row: Join Color 3 in first ch-3 sp. (Ch 3. 1 dc) all in same ch-3 sp. (Corner) once. 3 dc between next 2 groups of 3-dc. (Corner) once. (1 dc. Ch 3. Sl st) all in last ch-3 sp. Fasten off.

4th row: Join Color 4 in first ch-3 sp. (Ch 3. 1 dc) all in same ch-3 sp. 3 dc between first dc and next 3-dc group. (Corner) once. (3 dc between next 2 groups of 3-dc) twice. (Corner) once. 3 dc between next 3-dc group and last dc. (1 dc. Ch 3. Sl st) all in last ch-3 sp. Fasten off.

5th row: Join MC in first ch-3 sp. Ch 3. 2 dc between first dc and next 3-dc group. 3 dc between next 2 groups of 3-dc. (Corner) once. (3 dc between next 2 groups of 3-dc) 3 times. Work corner in next ch-3 sp. 3 dc between next 2 groups of 3-dc. 2 dc between next 3-dc group and last dc. Ch 3. Sl st in last ch-3 sp. Fasten off.

ASSEMBLY

Note: Sew pieces tog with MC through back loops only using whipstitch as indicated below, as shown [here in video tutorial](#).

Using Assembly Diagrams **XS/S, M, L, XL, 2/3XL** on page 4 and **4/5XL** on page 5, sew Motifs tog to form Sleeve (make 2), Back, Front Left and Front Right pieces.

Sleeve Edging:

Sizes M, L, XL, 2/3XL and 4/5XL only: With RS facing, join MC with sl st at corner of Sleeve, as indicated with star in Assembly Diagram.

1st row: Ch 3 (counts as dc). Work 65 dc evenly across edge of Sleeve. Turn.

2nd row: Ch 3 (counts as dc). 1 dc in each dc to end of row. Turn. Rep last row **1 (2-3-3-0)** time(s) more. Fasten off.

Rep along opposite edge of Sleeve.

Sew pieces tog along red lines in Assembly Diagrams.

Fold pieces in half along green dotted line.

Sew side and underarm seams.

EDGING

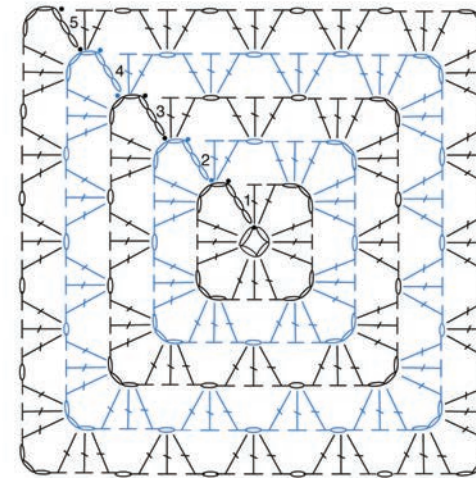
1st rnd: (RS). Join MC at back neck. Ch 1. Work sc evenly across back neck, down right front, across right front bottom and across back, across left front bottom, up left front, and across rem of back neck, working 3 sc at front bottom corners. Join with sl st to first sc.

2nd to 4th rnds: Ch 1. *Work sc evenly around to 1 st before next neck edge (indicated with circle in Assembly Diagram). Sc3tog. Rep from * once, working 3 sc at each corner. Work sc evenly to end of rnd. Join. Fasten off.

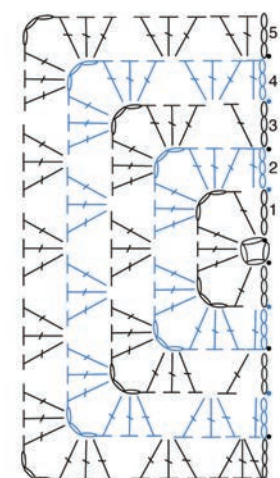
Cuffs: With RS facing, join MC with sl st at sleeve edge.

1st rnd: Ch 1. Work **44 (56-60-64-64-70)** sc evenly around sleeve opening. Join.

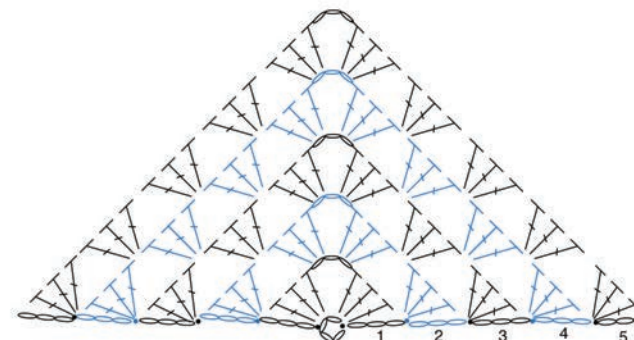
2nd to 4th rnds: Ch 1. 1 sc in each sc around. Join. Fasten off.



SQUARE



HALF SQUARE

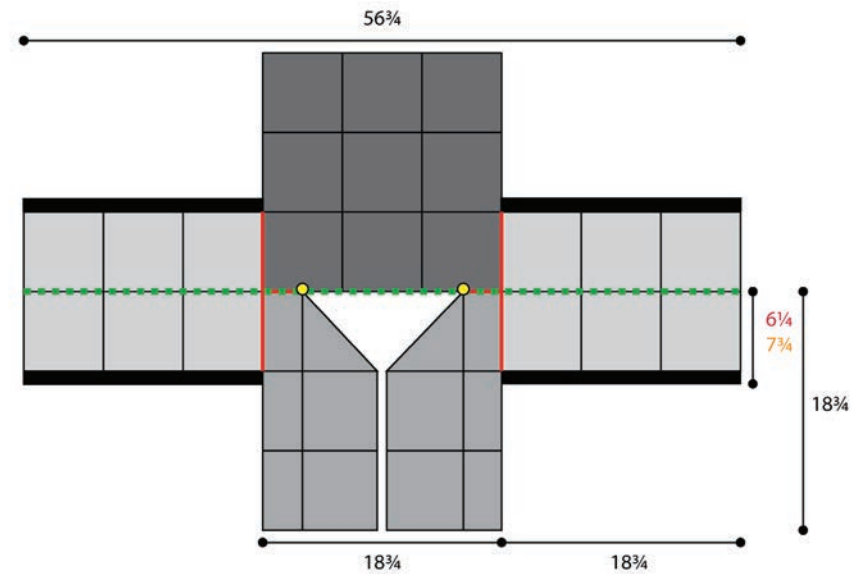
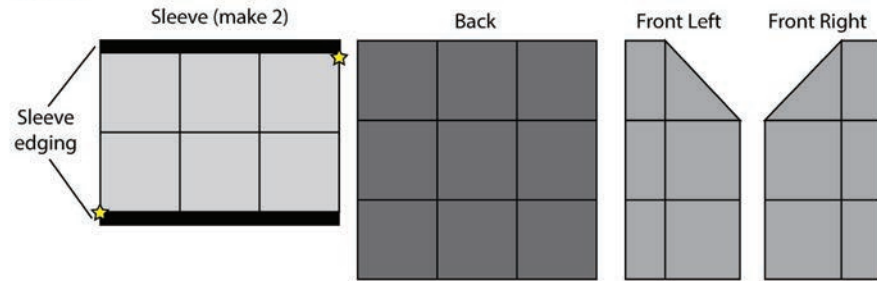


TRIANGLE

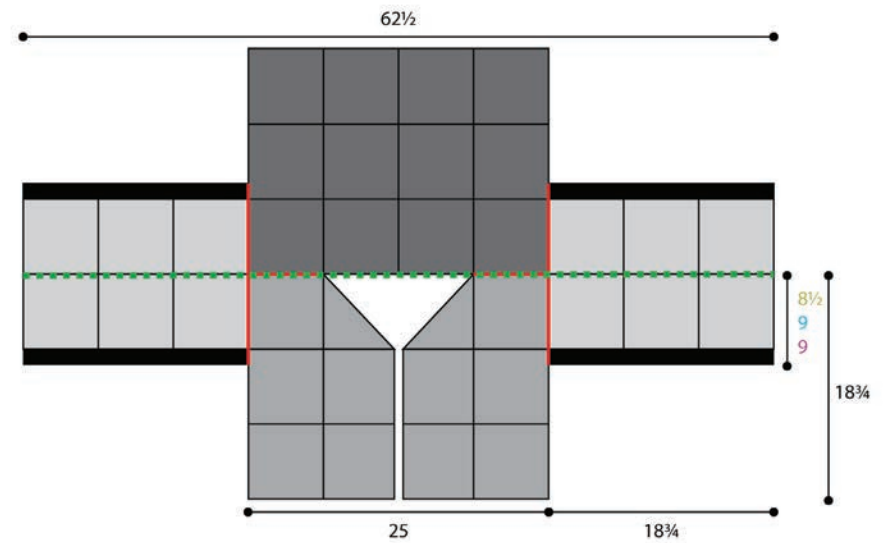
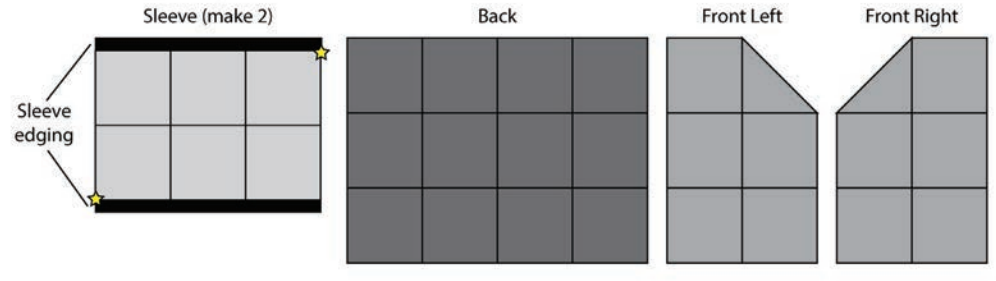
STITCH KEY

- = chain (ch)
- = slip stitch (sl st)
- ┆ = double crochet (dc)

XS/S - M Assembly Diagrams



L - XL - 2/3XL Assembly Diagrams



4/5XL Assembly Diagrams

