



MATERIALS

Patons® Classic Wool Worsted™ (3.5 oz/100 g; 210 yds/192 m)

Main Color (MC) Gray Mix (00224) **3 balls**

Contrast A Black (00226) **1 ball**

Contrast B Winter White (00201) **1 ball**

Size U.S. 7 (4.5 mm) knitting needles **or size needed to obtain gauge.**
20" [51 cm] square pillow form. Pair of size U.S. 7 (4.5 mm) double-pointed needles for I-cord edging.

ABBREVIATIONS:

Approx =

Approximate(ly)

Beg = Begin(ning)

Cont = Continue(ity)

K = Knit

P = Purl

Rep = Repeat

RS = Right side

St(s) = Stitch(es)

Tog = Together

WS = Wrong side

 KNIT | SKILL LEVEL: INTERMEDIATE

MEASUREMENT

Approx 20" [51 cm] square.

GAUGE

20 sts and 26 rows = 4" [10 cm] in stocking st.

INSTRUCTIONS

FRONT

Note: When working from chart, use intarsia technique and wind small balls of colors to be used, one for each separate area of color in the chart. To change colors, twist the 2 colors around each other where they meet, on WS, to avoid a hole. **Do not** strand colors across WS.

Note detailed sections of chart are worked in duplicate st after intarsia is complete.

With MC cast on 99 sts.

Work 4¼" [11 cm] in stocking st, ending on a purl row.

Place chart: 1st row: (RS). K15. Work 1st row of Chart across 69 sts. K15.
2nd row: P15. Work 2nd row of Chart across 69 sts. P15.
Chart is now in position. Chart is shown on page 2.

Cont working chart until row 69 of chart is complete.

Work a further 4¼" [11 cm] in stocking st (piece should measure approx. 19.5" [49.5 cm] long), ending on a purl row.

Cast off. Work duplicate st embroidery as indicated on chart.

BACK (make 2 pieces alike)

With MC, cast on 99 sts.

1st row: (RS). K2. *P1. K1. Rep from * to last st. K1.

2nd row: *K1. P1. Rep from * to last st. K1.

Rep last 2 rows twice more (6 rows total).

Proceed in stocking st until work from beg measures 12¼" [32 cm], ending on a purl row.
Cast off.

FINISHING

Pin pieces to measurements. Cover with a damp cloth, leaving cloth to dry.

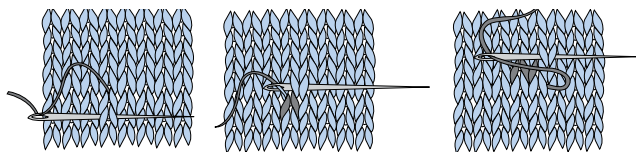
Overlap Back pieces to match Front, with ribbed sections in center to create opening to insert pillow form. Sew outer edge seams.

I-cord edging: With pair of needles and A, cast on 5 sts.

*K5. Slip sts to opposite end of needle.

Rep from * until I-cord measures approx 80" [203 cm], when slightly stretched. Cast off.

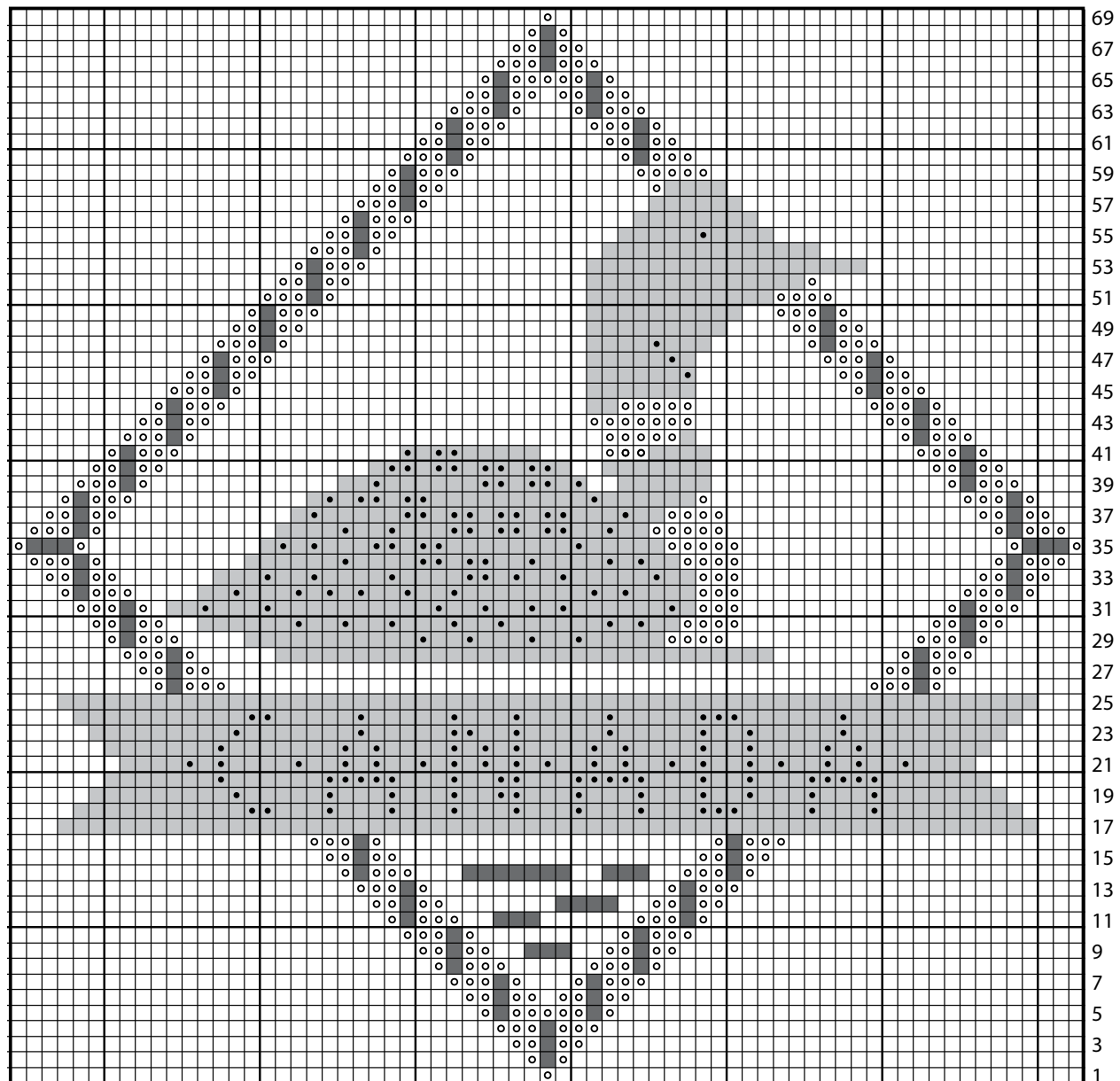
Beg at lower right corner, sew I-cord in position to Pillow edge, inserting and securing ends of I-cord into seam.



Duplicate Stitch Diagram

Key

- Main Color MC
- Contrast A
- Contrast B
- Contrast A in duplicate st
- Contrast B in duplicate st



Start Here