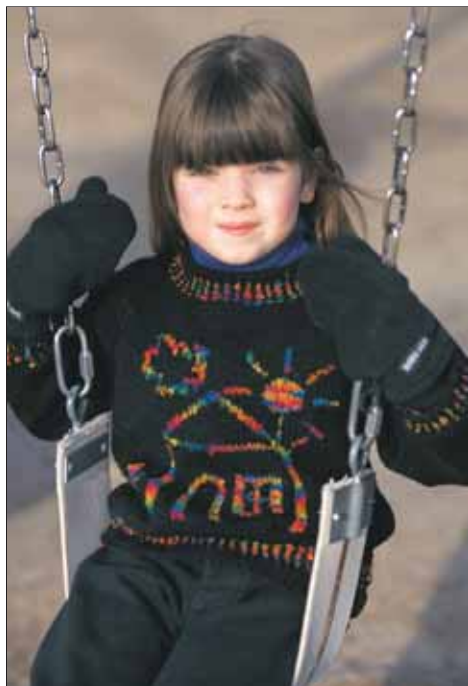


# Patons® Canadiana

## Patons DECOR



### CRAYON CREWNECK

#### SIZES

#### Chest measurement

<b>2</b>	22	ins	[56	cm ]
<b>4</b>	24	ins	[61	cm ]
<b>6</b>	26	ins	[66	cm ]

#### Finished chest

<b>2</b>	27	ins	[68.5	cm ]
<b>4</b>	29	ins	[73.5	cm ]
<b>6</b>	32	ins	[81	cm ]

#### MATERIALS

Patons Canadiana (100 g/3.5 oz)  
or Patons Décor (100 g/3.5 oz)

<b>Size</b>	<b>2</b>	<b>4</b>	<b>6</b>	
<b>Main color (MC)</b> (Black)	3	4	4	<b>balls</b>
<b>Contrast A</b> (Variegated)	2	2	2	<b>balls</b>

Sizes 4 mm (U.S. 8) and 4.5 mm (U.S. 7) knitting needles **or size needed to obtain tension**. 2 st holders.

#### TENSION

20 sts and 26 rows = 4 ins [10 cm] with larger needles in stocking st.

#### INSTRUCTIONS

*The instructions are written for smallest size. If changes are necessary for larger sizes the instructions will be written thus ( ).*

#### BACK

\*\*With MC and smaller needles cast on 61 (65-73) sts.

\*\*\***1st row:** (RS). K1. \*P1. K1. Rep from \* to end of row.

**2nd row:** P1. \*K1. P1. Rep from \* to end of row.

Rep last 2 rows once more.

**Next row:** With MC, K1. \*With A, P1. With MC, K1. Rep from \* to end of row.

**Next row:** With MC, P1. \*With A, K1. With MC, P1. Rep from \* to end of row.

Rep last 2 rows until work from beg measures 2 ins [5 cm] ending with **WS** facing for next row.\*\*\*

**Next row:** With MC, purl, inc 7 sts evenly across. 68 (72-80) sts.\*\*

Change to larger needles and proceed in stocking st until work from beg measures 14½ (17-19) ins [37 (43-48) cm], ending with RS facing for next row.

**Shoulder shaping:** Cast off 9 (10-12) sts beg next 2 rows, then 10 (11-12) sts beg following 2 rows. Leave rem 30 (30-32) sts on a st holder.

#### FRONT

Work from \*\* to \*\* as given for Back.

Change to larger needles and proceed in stocking st until work from beg measures 3 (3½-3¾) ins [7.5 (9-9.5) cm] ending with RS facing for next row.

Proceed as follows:

**1st row:** K10 (12-16). Work 1st row of Chart in stocking st reading row from **right** to left. K11 (13-17).

**2nd row:** P11 (13-17). Work 2nd row of Chart in stocking st reading row from **left** to right. P10 (12-16).

Chart is now in position.



ABBREVIATIONS: [www.patonsyarns.com/glossary](http://www.patonsyarns.com/glossary)

Cont working Chart to end of chart.

With MC, cont in stocking st until work from beg measures 12 (13¼-15) ins [30.5 (33.5-38) cm], ending with RS facing for next row.

**Neck shaping: Next row:** K24 (26-29) (neck edge). **Turn.** Leave rem sts on a spare needle.

Dec 1 st at neck edge on next 5 rows. 19 (21-24) sts.

Cont even until work from beg measures same length as Back to beg of shoulder shaping ending with RS facing for next row.

**Shoulder shaping:** Cast off 9 (10-12) sts beg next row. Work 1 row even. Cast off rem 10 (11-12) sts.

With RS of work facing, slip center 20 (20-22) sts onto a st holder. Join yarn to rem sts and knit to end of row.

Dec 1 st at neck edge on next 5 rows. 19 (21-24) sts.

Cont even until work from beg measures same length as Back to beg of shoulder shaping ending with **WS** facing for next row.

**Shoulder shaping:** Cast off 9 (10-12) sts beg next row. Work 1 row even. Cast off rem 10 (11-12) sts.

## SLEEVES

With MC and smaller needles cast on 33 (37-41) sts.

Work from \*\*\* to \*\*\* as given for Back.

**Next row:** With MC, purl, inc 8 (10-7) sts evenly across. 41 (47-48) sts.

Change to larger needles and proceed in stocking st inc 1 st each end of needle on 3rd (5th-5th) and following 4th (6th-6th) rows to 47 (71-74) sts.

**Size 2 only:** Inc 1 st each end of needle on every following 6th row to 57 sts.

**All sizes:** Cont even until Sleeve from beg measures 9½ (11½-13) ins [18 (29-33) cm], ending with RS facing for next row. Cast off.

## FINISHING

Pin garment pieces to measurements and cover with a damp cloth leaving to dry.

**Neckband:** Sew right shoulder seam. With RS facing, MC and smaller needles, pick up and knit 14 (20-22) sts down left front neck edge. K20 (20-22) from front st holder. Pick up and knit 14 (20-22) sts up right front neck edge. K30 (30-32) from back st holder, dec 1 st at center. 77 (89-97) sts.

**1st row:** (WS). With MC, P1. \*With A, K1. With MC, P1. Rep from \* to end of row.

**2nd row:** With MC, K1. \*With A, P1. With MC, K1. Rep from \* to end of row.

Rep last 2 rows once more, then 1st row once.

**Next row:** (RS) With MC, \*K1. P1. Rep from \* to last st. K1.

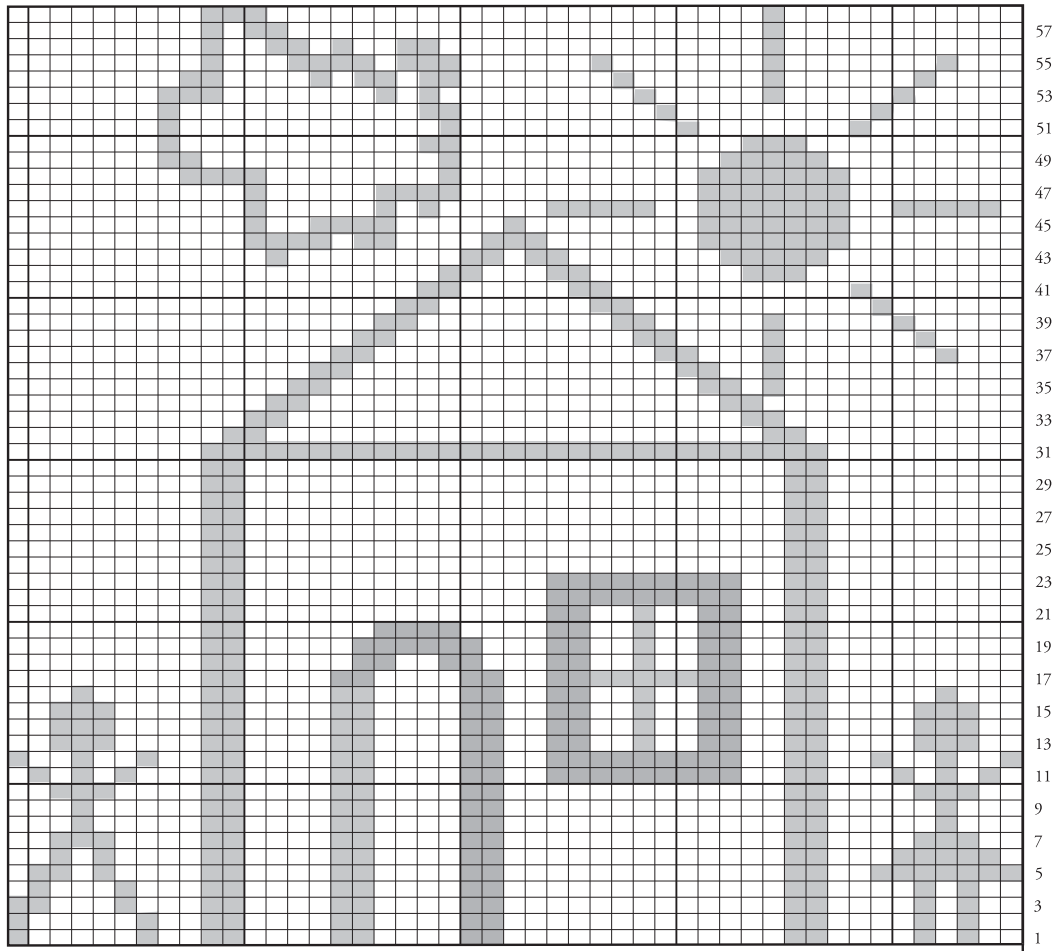
**Next row:** P1. \*K1. P1. Rep from \* to end of row.

Cast off loosely in ribbing. Sew left shoulder and neckband seam.

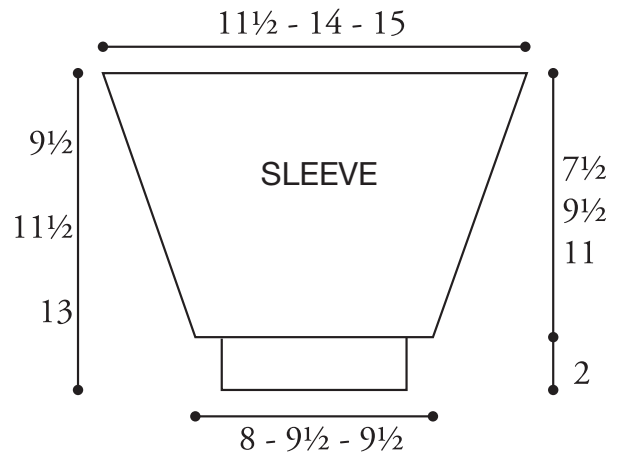
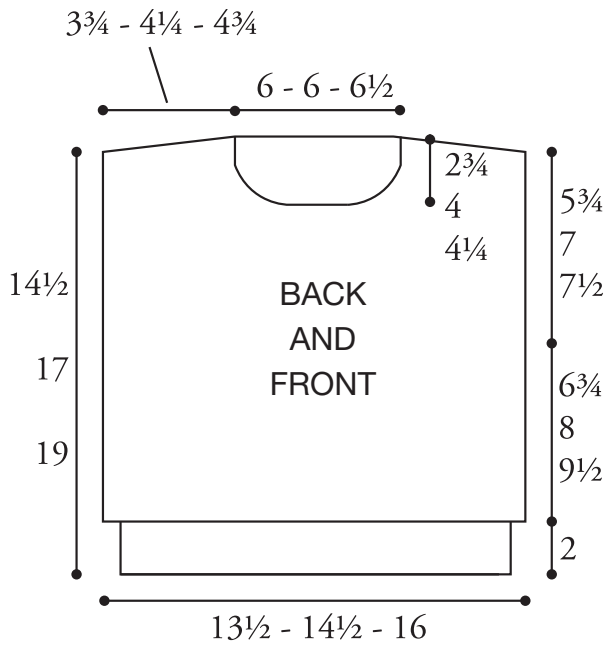
Place markers on Front and Back side edges 5¾ (7-7½) ins [14.5 (18-19) cm] down from shoulder seams. Sew in sleeves between markers. Sew side and sleeve seams.

**CHART**

Key  
 □ = MC  
 ■ = Contrast A



Start Here



**Patons**

*... a part of your life.*

P.O. Box 40, Listowel ON N4W 3H3