



KNIT | SKILL LEVEL: **INTERMEDIATE**

ABBREVIATIONS

Approx = Approximately

Beg = Beginning

Cont = Continue(ity)

K = Knit

K2tog = Knit next 2 stitches together

M1 = Make 1 stitch by picking up loop lying before next stitch and knitting into back of loop

P = Purl

Pat = Pattern

Rep = Repeat

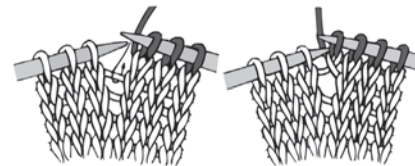
RS = Right side

Sl2Pwyib = Slip next 2 stitches purlwise with yarn in back of work

Sl2Pwyif = Slip next 2 stitches purlwise with yarn in front of work

St(s) = Stitch(es)

WS = Wrong side



MEASUREMENTS

Approx 39" x 40½" [99 x 103 cm].

GAUGE

16 sts and 20 rows = 4" [10 cm] in Honeycomb Pat.

INSTRUCTIONS

Notes:

- Every row is worked with one color only.
- When slipping sts, hold yarn in back of work on RS and yarn in front of work on WS.

- Carry MC when not in use loosely up side of work, taking new color from behind old color, being careful not to twist strands, when changing yarns at beg of row.
- When carrying yarn behind/in front of slipped sts, be sure yarn is loose enough to maintain gauge and prevent work from puckering.
- Honeycomb Pat worked over a multiple of 8 sts + 6.

MATERIALS

Caron® One Pound™ (16 oz/453.6 g; 812 yds/742 m)

Main Color (MC) Off White (10514) **1 ball or 655 yds/599 m**

Contrast A Soft Sage (10580) **1 ball or 180 yds/165 m**

Contrast B Sunflower (10549) **1 ball or 165 yds/151 m**

Contrast C Grass Green (10620) **1 ball or 146 yds/133 m**

Size U.S. 10 (6 mm) circular knitting needle 36" [91.5cm] long **or size needed to obtain gauge.** Yarn needle.

Stripe Pat

With A, work 6 rows.
 With MC, work 4 rows.
 With B, work 6 rows.
 With MC, work 4 rows.
 With C, work 6 rows.
 With MC, work 4 rows.
 These 30 rows form Stripe Pat.

BLANKET

With MC, cast on 133 sts. **Do not** join. Working back and forth across needle in rows, proceed as follows: Knit 11 rows (garter st), noting first row is RS.

Increase row: (WS). K10. M1. *K14. M1. Rep from * to last 11 sts. K11. 142 sts.

Proceed in Honeycomb Pat and Stripe Pat as follows (see chart):

1st, 3rd and 5th rows: (RS). With A, K2. Sl2Pwyib. *K6. Sl2Pwyib. Rep from * to last 2 sts. K2.

2nd, 4th and 6th rows: (WS). With A, P2. *Sl2Pwyif. P6. Rep from * to last 4 sts. Sl2Pwyif. P2.

7th to 10th rows: With MC, knit.

11th, 13th and 15th rows: With B, K6. *Sl2Pwyib. K6. Rep from * to end of row.

12th, 14th and 16th rows: With B, *P6. Sl2Pwyif. Rep from * to last 6 sts. P6.

17th to 20th rows: With MC, knit. Last 20 rows form Honeycomb Pat. First 20 rows of Stripe Pat are complete.

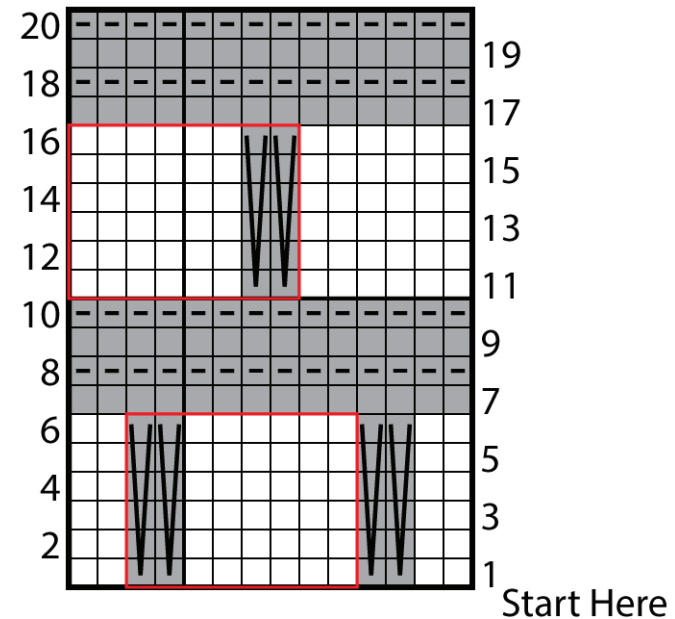
Cont in Honeycomb Pat, keeping cont of Stripe Pat, until work from beg measures approx 39" [99 cm], ending on a 6th or 16th row of Honeycomb Pat.

Decrease row: (RS). With MC, K9. K2tog. *K13. K2tog. Rep from * to last 11 sts. K11. 133 sts. Knit 11 rows (garter st). Cast off.

Side edging: With RS facing and MC, pick up and knit 152 sts evenly along right side edge of Blanket. Knit 12 rows (garter st). Cast off. Rep for opposite side.

FINISHING

Pin Blanket to measurements. Cover with damp cloth and allow to dry.



Key

- = With Contrasting Color, knit on RS rows. Purl on WS rows.
- = With MC, knit on RS rows.
- = With MC, knit on WS rows.
- = With MC, Sl2Pwyib on RS rows. Sl2Pwyif on WS rows.
- = 8-st rep