



MEASUREMENTS

Approx 6" x 46" [15 x 117 cm].

MATERIALS

Bernat® Satin Sparkle™ (80 g/2.8 oz; 146 m/160 yds)



Sapphire (53110)

2 balls

Size 5 mm (U.S. 8) knitting needles **or size needed to obtain gauge.**
Cable needle.

GAUGE

18 sts and 24 rows = 4" [10 cm] in stocking st.

ABBREVIATIONS: www.bernat.com/abbreviations

Alt = Alternate(ing)

Approx = Approximately

Beg = Beginning

C4B = Slip next 2 stitches onto a cable needle and leave at back of work. K2, then K2 from cable needle.

C4F = Slip next 2 stitches onto a cable needle and leave at front of work. K2, then K2 from cable needle.

C6B = Slip next 3 stitches onto a cable needle and leave at back of work. K3, then K3 from cable needle.

C6F = Slip next 3 stitches onto a cable needle and leave at front of work. K3, then K3 from cable needle.

Cont = Continue

K = Knit

MB = [(K1. P1) 3 times. K1] all in next stitch. Slip 6th, 5th, 4th, 3rd, 2nd and first stitches separately over 7th stitch. 1 stitch remains - Bobble complete.

P = Purl

Pat = Pattern

Rep = Repeat(s)

RS = Right side

St(s) = Stitch(es)

Tog = Together

T4B = Slip next stitch onto a cable needle and leave at back of work. K3, then P1 from cable needle.

T4F = Slip next 3 stitches onto a cable needle and leave at front of work. P1, then K3 from cable needle.

INSTRUCTIONS

Cable Panel A (worked over 30 sts). (See Chart on page 2).

1st row: (RS). P2. MB. P2. C6F. P8. C6F. P2. MB. P2.

2nd and alt rows: Knit all knit sts and purl all purl sts as they appear.

3rd and 5th rows: P5. K6. P8. K6. P5.

7th row: P2. MB. P2. C6F. P8. C6F. P2. MB. P2.

9th row: P4. T4B. T4F. P6. T4B. T4F. P4.

11th row: P3. T4B. P2. T4F. P4. T4B. P2. T4F. P3.

13th row: P3. K3. P4. T4F. P2. T4B. P4. K3. P3.

15th row: P3. T4F. P4. T4F. T4B. P4. T4B. P3.

17th row: P4. T4F. P4. C6B. P4. T4B. P4.

19th row: P2. MB. P2. (T4F. P2. T4B) twice. P2. MB. P2.

21st row: P6. (T4F. T4B. P2) twice. P6.

23rd row: P2. MB. P4. (C6F. P4) twice. P4. MB. P2.

25th row: P6. (T4B. T4F. P2) twice. P4.

27th row: P2. MB. P2. (T4B. P2. T4F) twice. P2. MB. P2.

29th row: P4. T4B. P4. C6B. P4. T4F. P4.

31st row: P3. T4B. P4. T4B. T4F. P4. T4F. P3.

33rd row: P3. K3. P4. T4B. P2. T4F. P4. K3. P3.

35th row: P3. T4F. P2. T4B. P4. T4F. P2. T4B. P3.

37th row: P4. T4F. T4B. P6. T4F. T4B. P4.

38th row: As 2nd row.

These 38 rows form Cable Panel A.

Cable Panel B (worked over 6 sts). (See Chart on page 2).

1st row: (RS). C6B.

2nd and alt rows: P6.

3rd and 5th rows: K6.

6th row: P6.

These 6 rows form Cable Panel B.

Cable Panel C (worked over 6 sts). (See Chart on page 2).

1st row: (RS). C6F.

2nd and alt rows: P6.

3rd and 5th rows: K6.

6th row: P6.

These 6 rows form Cable Panel C.

Cast on 42 sts.

1st row: (RS). K6. P5. K6. P8. K6. P5. K6.

2nd row: P6. K5. P6. K8. P6. K5. P6.

Proceed in pat as follows:

1st row: (RS). Work 1st row of Cable Panel B. Work 1st row of Cable Panel A. Work 1st row of Cable Panel C.

2nd row: Work 2nd row of Cable Panel C. Work 2nd row of Cable Panel A. Work 2nd row of Cable Panel B.

3rd row: Work 3rd row of Cable Panel B. Work 3rd row of Cable Panel A. Work 3rd row of Cable Panel C.

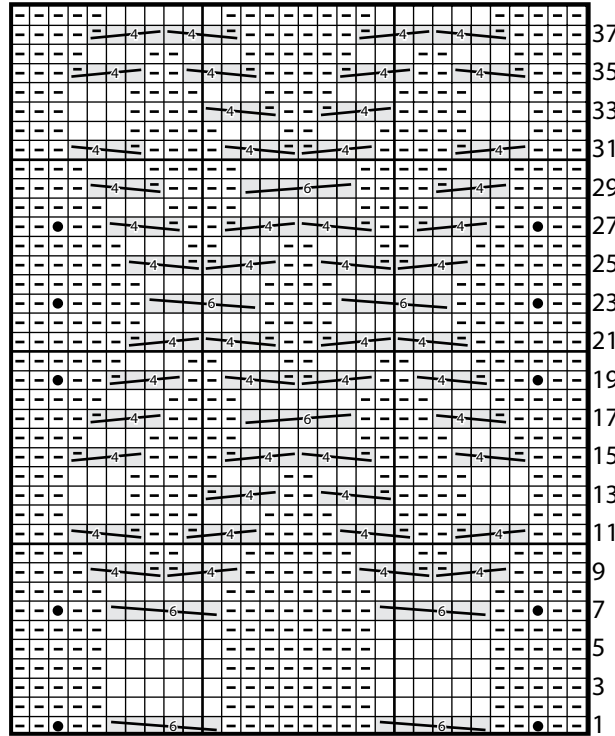
4th row: Work 4th row of Cable Panel C. Work 4th row of Cable Panel A. Work 4th row of Cable Panel B.

Cable Panels A, B and C are now in position.

Cont in pat until work from beg measures approx 46" [117 cm], ending on a 38th row of Cable Panel A. Cast off.

Sew cast on and cast off edges tog.

CABLE PANEL A

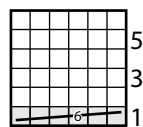


Start Here

KEY

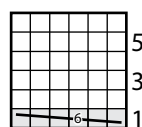
- ☐ = Knit on RS and purl on WS
- ☐ = Purl on RS and knit on WS
- ☐ = C4F
- ☐ = C4B
- ☐ = T4F
- ☐ = T4B
- ☐ = C6F
- ☐ = C6B
- ☐ = MB

CABLE PANEL B



Start Here

CABLE PANEL C



Start Here