



## MATERIALS

Patons® Decor™ (3.5 oz/100 g; 208 yds/190 m)

Sizes	XS/S	M	L	XL	2/3XL	4/5XL	
Aran (87602)	6	6	7	7	8	10	balls

Size 4.5 mm (U.S. 7) knitting needles. Size 4.5 mm (U.S. 7) circular knitting needle 24" [60 cm] long. Set of four 4 mm (U.S. 6) and 4.5 mm (U.S. 7) double pointed knitting needles **or size needed to obtain gauge**. Cable needle.

## ABBREVIATIONS: [www.yarnspirations.com/abbreviations](http://www.yarnspirations.com/abbreviations)

**Approx** = Approximately

**Beg** = Beginning

**C4B** = Slip next 2 stitches onto a cable needle and leave at back of work. K2, then K2 from cable needle.

**C4F** = Slip next 2 stitches onto a cable needle and leave at front of work. K2, then K2 from cable needle.

**Cont** = Continue(ity)

**Dec** = Decrease(ing)

**K** = Knit

**K2tog** = Knit next 2 stitches together.

**M1** = Make one stitch by picking up horizontal loop lying before next stitch and knitting into back of loop.



**P** = Purl

**P2tog** = Purl next 2 stitches together

**Pat** = Pattern

**Pss0** = Pass slipped stitch over

**Rem** = Remaining

**Rep** = Repeat

**Rnd(s)** = Round(s)

**RS** = Right side

**Sl1** = Slip next stitch knitwise.

**St(s)** = Stitch(es)

**T3B** = Slip next stitch onto a cable needle and leave at back of work. K2, then P1 from cable needle.

**T3F** = Slip next 2 stitches onto a cable needle and leave at front of work. P1, then K2 from cable needle.

**T4B** = Slip next 2 stitches onto a cable needle and leave at back of work. K2, then P2 from cable needle.

**T4F** = Slip next 2 stitches onto a cable needle and leave at front of work. P2, then K2 from cable needle.

**Tog** = Together



INTERMEDIATE

## SIZE

To fit bust measurement

**Extra-Small/Small**  
28-34" [71-86.5 cm]

**Medium**  
36-38" [91.5-96.5 cm]

**Large**  
40-42" [101.5-106.5 cm]

**Extra-Large**  
44-46" [112-117 cm]

**2 Extra-Large/3 Extra-Large**  
48-54" [122-137 cm]

**4 Extra-Large/5 Extra-Large**  
56-62" [142-157.5 cm]

## Finished bust

**X-Small/Small** 37" [94 cm]

**Medium** 41" [104 cm]

**Large** 45" [114.5 cm]

**X-Large** 49" [124.5 cm]

**2/3X Large** 58" [147.5 cm]

**4/5X Large** 66" [167.5 cm]

## GAUGE

20 sts and 26 rows = 4" [10 cm] with larger needles in stocking st.

## INSTRUCTIONS

*The instructions are written for smallest size. If changes are necessary for larger sizes the instructions will be written thus ( ). Numbers for each size are shown in the same color throughout the pattern. When only one number is given in black, it applies to all sizes.*

Panel Pat A (worked over 28 sts). (see page 3).

**1st row:** (RS). (P4. C4B) 3 times. P4.

**2nd row:** (K4. P4) 3 times. K4.

**3rd row:** P3. T3B. (T4F. T4B) twice. T3F. P3.

**4th row:** K3. P2. K3. P4. K4. P4. K3. P2. K3.

**5th row:** P2. T3B. P3. C4F. P4. C4F. P3. T3F. P2.

**6th row:** K2. P2. (K4. P4) twice. K4. P2. K2.

**7th row:** P2. K2. P2. (T4B. T4F) twice. P2. K2. P2.

**8th row:** (K2. P2) twice. K4. P4. K4. (P2. K2) twice.

**9th row:** (P2. K2) twice. P4. C4B. P4. (K2. P2) twice.

**10th row:** As 8th row.

**11th row:** P2. K2. P2. (T4F. T4B) twice. P2. K2. P2.

**12th row:** As 6th row.

**13th row:** P2. T3F. P3. C4F. P4. C4F. P3. T3B. P2.

**14th row:** As 4th row.

**15th row:** P3. T3F. (T4B. T4F) twice. T3B. P3.

**16th row:** As 2nd row.

These 3rd to 16th rows form Panel Pat A.

## YOKE CABLE

With larger needles, cast on 30 sts.

**1st row:** (RS). P1. Work 1st row of Panel Pat A. P1.

**2nd row:** K1. Work 2nd row of Panel Pat A. K1.

Panel Pat A is now in position.



Cont in pat (work 3rd to 16th rows of panel pat only) until work measures approx **43** (**44-45-46-47.5-49**)" [**109** (**112-114.5-117-120.5-124.5**) cm], ending with 16th row of pat. Cast off. Sew cast on and cast off edges tog.

### BOTTOM YOKE

Beg at side seam of Cable Yoke, with larger circular needle pick up and knit **216** (**220-228-236-252-260**) sts evenly around bottom edge of Cable Yoke. Join in rnd. Mark first st as beg of rnd.

**1st rnd:** Knit.

**2nd rnd:** \*K1 (first marked st). M1. **K39** (**39-41-43-47-49**). M1. K1. Place marker on last st. M1. **K67** (**69-71-73-77-79**). M1. Rep from \* once more. **224** (**228-236-244-260-268**) sts.

**Size XS/S only: 3rd rnd:** Knit.

**4th rnd:** K1. M1. \*Knit to marked st. M1. K1. M1. Rep from \* twice more. Knit to end of rnd. M1.

Rep last 2 rnds twice more. 248 sts.

**All sizes: Next rnd:** K1 (first marked st). \*Knit to next marked st. K1. M1. Knit to next marked st. M1.\* K1. Rep from \* to \* once more.

**Next rnd:** K1. M1. \*Knit to marked st. M1. K1. M1. Rep from \* twice more. Knit to end of rnd. M1.

Rep last 2 rnds **0** (**1-3-0-2-1**) time(s) more. **260** (**252-284-256-296-292**) sts.

**Next rnd:** K1. M1. \*Knit to marked st. M1. K1. M1. Rep from \* twice more. Knit to end of rnd. M1.

Rep last rnd **2** (**7-6-12-11-4**) times more. **284** (**316-340-360-392-332**) sts.

**Size 4/5XL only: Next rnd:** K1 (first marked st). \*M1. Knit to next marked st. M1. (K1. M1) twice. Knit to 1 st before marked st.\* (M1. K1) twice. Rep from \* to \* once more. M1. K1. M1.

Rep last rnd 9 times more. 452 sts.

**All sizes: Next rnd:** (Dividing rnd). Slip first **56** (**62-66-74-80-86**) sts (Left Sleeve) onto length of spare yarn. Join yarn to next st and **K86** (**96-104-106-116-140**) (Front). Cast on **6** (**6-8-16-20-26**) sts.

Place marker after 3rd (3rd-4th) cast on st. Slip next **56** (**62-66-74-80-86**) sts (Right Sleeve) onto length of spare yarn. Knit rem **86** (**96-104-106-116-140**) sts (Back). Cast on **6** (**6-8-16-20-26**) sts. Place marker after 3rd (3rd-4th) cast on st. Join in rnd. **184** (**204-224-244-272-332**) sts.

**Body: Sizes XS/S, M and L only:** Knit in rnds for 2" [5 cm].

**\*\*Next rnd:** \*K1. K2tog. Knit to 3 sts before marker. Sl1. K1. pss0. K1. Rep from \* once more.

Knit in rnds for 1½" [4 cm].\*\*

Rep from \*\* to \*\* 4 times more. 164 (184-204) sts.

**All sizes:** Knit even in rnds until work from dividing rnd measures **8½** (**8½-8½-12-14-15**)" [**21.5** (**21.5-21.5-30.5-35.5-38**) cm], inc **10** (**8-12-20-22-22**)

sts evenly around last rnd. **174** (**192-216-264-294-354**) sts.

Proceed as follows:

**1st rnd:** \*P2. K4. Rep from \* around.

**2nd rnd:** \*P2. C4B. Rep from \* around.

**3rd to 5th rnds:** \*P2. K4. Rep from \* around.

Rep 1st to 5th rnds for **6** (**6-6-3-3-3**)" [**15** (**15-15-7.5-7.5-7.5**) cm]. Cast off in pat.

**Sleeves:** With RS of work facing slip **56** (**62-66-74-80-86**) sts from spare yarn onto three larger double pointed needles. Cast on **6** (**6-8-16-20-26**) sts. Join in rnd. Place marker after **3rd** (**3rd-4th-8th-10th-13th**) cast on st for beg of rnd. **62** (**68-74-90-100-112**) sts. Knit in rnds for 2" [5 cm].

**Next rnd:** \*K1. K2tog. Knit to 3 sts before marker. Sl1. K1. pss0. K1.

Cont knitting in rnds, dec 1 st at beg and end of rnd as before on every following **10th** (**8th-6th-4th-4th-4th**) rnd from previous dec to **54** (**54-46-46-72-98**) sts, then on every following **8th** (**6th-4th-2nd-2nd-2nd**) rnd to **40** (**40-40-44-46-46**) sts.

Cont even until work from dividing rnd measures **14½** (**15-15-15½-14-13**)" [**37** (**38-38-39.5-35.5-33**) cm], inc **8** (**8-8-10-14-14**) sts evenly around last rnd. **48** (**48-48-54-60-60**) sts.

Change to set of smaller double pointed needles.

**1st rnd:** \*P2. K4. Rep from \* around.

**2nd rnd:** \*P2. C4B. Rep from \* around.

**3rd to 5th rnds:** \*P2. K4. Rep from \* around.

Rep 1st to 5th rnds for 3" [7.5 cm]. Cast off in pat.

### TOP YOKE

With RS of work facing and larger circular needle, starting at side seam, pick up and knit **198** (**198-220-220-242-242**) sts around top edge of Cable Yoke. Join in rnd. Mark first st as beg of rnd.

**1st rnd:** \*P7. K4. Rep from \* around.

**2nd rnd:** \*P2tog. P5. K4. P7. K4. Rep from \* around.

**3rd rnd:** \*P6. K4. P7. K4. Rep from \* around.

**4th rnd:** \*P6. C4B. P2tog. P5. C4B. Rep from \* around.

**5th rnd:** \*P6. K4. Rep from \* around.

**6th rnd:** \*P2tog. P4. K4. P6. K4. Rep from \* around.

**7th rnd:** \*P5. K4. P6. K4. Rep from \* around.

**8th rnd:** \*P5. K4. P2tog. P4. K4. Rep from \* around.

**9th rnd:** \*P5. C4B. Rep from \* around.

**10th rnd:** \*P2tog. P3. K4. P5. K4. Rep from \* around.

**11th rnd:** \*P4. K4. P5. K4. Rep from \* around.

**12th rnd:** \*P4. K4. P2tog. P3. K4. Rep from \* around.

**13th rnd:** \*P4. K4. Rep from \* around.

**14th rnd:** \*P2tog. P2. C4B. P4. C4B. Rep from \* around.



**15th rnd:** \*P3. K4. P4. K4. Rep from \* around.

**16th rnd:** \*P3. K4. P2tog. P2. K4. Rep from \* around.

**17th rnd:** \*P3. K4. Rep from \* around.

**18th rnd:** \*P2tog. P1. K4. P3. K4. Rep from \* around.

**19th rnd:** \*P2. C4B. P3. C4B. Rep from \* around.

**20th rnd:** \*P2. K4. P2tog. P1. K4. Rep from \* around.

**21st rnd:** \*P2. K4. Rep from \* around.

**22nd rnd:** \*P2tog. K4. P2. K4. Rep from \* around.

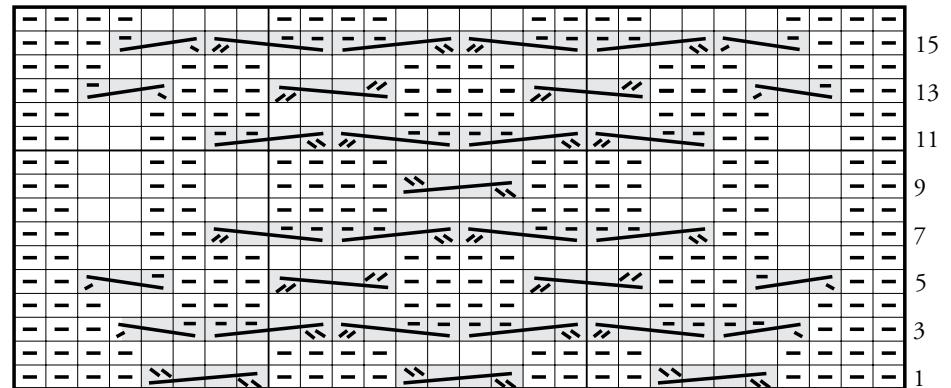
**23rd rnd:** \*P1. K4. P2. K4. Rep from \* around.

**24th rnd:** \*P1. C4B. P2tog. C4B. Rep from \* around.

**25th to 28th rnds:** \*P1. K4. Rep from \* around.

**29th rnd:** \*P1. C4B. Rep from \* around. Rep 25th to 29th rnds for 3" [7.5 cm]. Cast off in pat.

Panel Pat A



Key

= Knit on RS and purl on WS

= Purl on RS and knit on WS

= T3F

= T3B

= C4F

= C4B

= T4F

= T4B

