



 CROCHET | SKILL LEVEL: EASY

## MATERIALS

**Caron® Simply Soft™** (Ombres: 4 oz/113 g; 204 yds/186 m;  
Solids: 6 oz/170.1 g; 315 yds/288 m)

**Main Color (MC)** Grape Purple (08315), Teal Zeal (08701),  
Cafe Latte Brown (08012) or Saturday Blue Jeans (08114)

**Contrast A** Fuchsia (39764), Chartreuse (39771), Soft Pink (39719) or White (39701)

	MC	Contrast A
<b>Entire Set</b>	<b>3 balls</b>	<b>1 ball</b>
<b>Scarf</b>	<b>1 ball</b>	<b>1 ball</b>
<b>Headband</b>	<b>1 ball</b>	<b>1 ball</b>
<b>Fingerless Gloves</b>	<b>1 ball</b>	-

**Scarf and Headband:** Size U.S. H/8 (5 mm) crochet hook **or size needed to obtain gauge.**

**Fingerless Gloves:** Size U.S. 7 (4.5 mm) crochet hook **or size needed to obtain gauge.** 4 buttons.

## ABBREVIATIONS:

**Approx** = Approximately

**Beg** = Beginning

**Ch** = Chain(s)

**Cont** = Continue(ity)

**Dc** = Double crochet

**Hdc** = Half double crochet

**Pat** = Pattern

**Rem** = Remaining

**Rep** = Repeat

**RS** = Right side

**Rnd(s)** = Round(s)

**Sc** = Single crochet

**Sc2tog** = Draw up a loop

in each of next 2 stitches.

Yoh and draw through all

loops on hook

**Sl st** = Slip stitch

**Sp(s)** = Space(s)

**St(s)** = Stitch(es)

**Tog** = Together

**WS** = Wrong side

**Yoh** = Yarn over hook

## MEASUREMENTS

**Scarf:** Approx 7 x 60" [18 x 152.5 cm].

**Headband and Fingerless Gloves:** One size to fit average woman.

## GAUGE

**Scarf and Headband:** 13 dc and 7 rows = 4" [10 cm] with U.S. H/8 (5 mm) crochet hook.

**Fingerless Gloves:** 14 sc and 15 rows = 4" [10 cm] with U.S. 7 (4.5 mm) crochet hook.

## INSTRUCTIONS

### SCARF

See Diagram 1 on page 3.

With MC and size U.S. H/8 (5 mm) hook, ch 32.

**Foundation row:** (RS). 1 sc in 2nd ch from hook. \*Skip next 2 ch. [(1 dc. Ch 2) twice. 1 dc] all in next ch – Shell made. Skip next 2 ch. 1 sc in next ch. Rep from \* to end of ch. Turn.

**1st row:** Ch 5 (counts as dc and ch 2). 1 dc in first sc. \*Skip next dc and ch-2 sp. 1 sc in next dc (top of Shell). Skip next ch 2-sp and dc. Shell in next sc. Rep from \* to last Shell. Skip next dc and ch-2 sp. 1 sc in top of next dc. (1 dc. Ch 2. 1 dc) all in last sc. Turn.

**2nd row:** Ch 1. 1 sc in first dc. \*Shell in next sc. Skip next dc and ch-2 sp. 1 sc in top of next dc. Skip next dc and ch-2 sp. Rep from \* to last sc. Shell in next sc. 1 sc in 2nd ch of turning ch 5. Turn. Last 2 rows form pat.

Cont in pat until work from beg measures 60" [152.5 cm], ending with a RS row.

Fasten off.

### HEADBAND

With MC and size U.S. H/8 (5 mm) hook, ch 14.

Work in pat, as given for Scarf until Headband measures 19½" [49.5 cm].

Fasten off. Sew short ends tog.

### FLOWERS (make 3).

See Diagram 2 on page 3.

With A, ch 4. Join with sl st to first ch to form ring.

**1st rnd:** 12 sc in ring. Join with sl st to first sc.

**2nd rnd:** Ch 3 (counts as dc). 2 dc in same sp as sl st. Ch 1. \*1 sc in next sc. Ch 1. 3 dc in next sc. Ch 1. Rep from \* around. Rep from \* around, ending with 1 sc in last sc. Ch 1. Join with sl st to top of ch 3.

**3rd rnd:** \*Ch 3. Sl st in back loop of next sc, keeping ch to back of work. Rep from \* around.

**4th rnd:** Ch 1. \*(1 sc. 5 dc. 1 sc) in next ch-3 sp. Ch 1. Rep from \* around. Join with sl st to back loop of ch 1.

**5th rnd:** \*Ch 5. Sl st in back loop of next ch 1, keeping ch to back of work. Rep from \* around.

**6th rnd:** Ch 1. \*(1 sc. 7 dc. 1 sc) in next ch-3 sp. Ch 1. Rep from \* around. Join with sl st to back loop of ch 1. Fasten off. Sew Flowers to Headband and Scarf as shown.

### FINGERLESS GLOVES

#### CUFF

With MC and size U.S. 7 (4.5 mm) hook, ch 2.

**1st row:** (1 sc. Ch 1. 1 sc) in 2nd ch from hook. Turn. 3 sts.

**2nd row:** Ch 1. 1 sc in first sc. Ch 1. 1 sc in next ch-1 sp. Ch 1. 1 sc in last sc. Turn. 5 sts.

**3rd row:** Ch 1. 1 sc in first sc. Ch 1. 1 sc in next ch-1 sp. Ch 1. Skip next sc. 1 sc in next ch-1 sp. Ch 1. 1 sc in last sc. Turn. 7 sts.

**4th row:** Ch 1. 1 sc in first sc. Ch 1. \*1 sc in next ch-1 sp. Ch 1. Skip next sc. Rep from \* to last sc. 1 sc in last sc. Turn.

Rep last row to 27 sts. (Straight sides measure approx 5" [12.5 cm]).

**Next row:** Ch 1. 1 sc in first sc. Ch 1. \*1 sc in next ch-1 sp. Ch 1. Skip next sc. Rep from \* to last 2 sts. Sc2tog over last ch-1 sp and last sc. Turn.

**Next row:** Ch 1. Sc2tog over first sc and next ch-1 sp. \*Ch 1. Skip next sc. 1 sc in next ch-1 sp. Rep from \* to last sc. Ch 1. 1 sc in last sc. Turn.

Rep last 2 rows twice more.

**Next row:** Ch 1. Sc2tog over first sc and next ch-1 sp. \*Ch 1. Skip next sc. 1 sc in next sc. Rep from \* to last 2 sts. Ch 1. Sc2tog over last ch-1 sp and last sc. Turn. Rep last row until 3 sts rem.

**Next row:** Ch 1. *Pull up a loop in first sc, next ch-1 sp and last sc. Yoh and pull through all 4 loops on hook - sc3tog made.* Fasten off. Sew side seam.

Join MC with sl st to top of cuff at side seam.

**1st rnd:** Ch 1. Work 21 sc evenly around top of cuff. Join with sl st to first sc.

**2nd to 4th rnds:** Ch 1. 2 sc in first sc. 1 sc in each sc to last sc. 2 sc in last sc. Join with sl st to first sc. 27 sc at end of 4th rnd.

**5th to 11th rnds:** Ch 1. 1 sc in each sc around. Join with sl st to first sc.

**12th rnd:** Ch 1. 1 sc in each sc to last 3 sc. Leave rem 3 sc unworked.

**13th rnd:** Ch 3. Skip first 3 sc. 1 sc in each of next 18 sc. 1 sc in each of next 3 ch. Join with sl st to first sc. (There are 6 sc left unworked for the thumb).

Work on rem 21 sc as follows:

**14th and 15th rnds:** Ch 1. 1 sc in each sc around. Join with sl st to first sc. Fasten off.

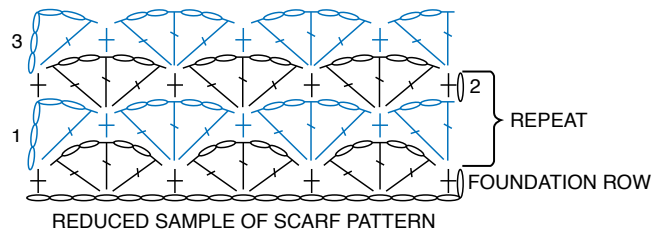
**Strap** (make 2).

With MC and size U.S. 7 (4.5 mm) hook, ch 11.

**1st rnd:** 1 sc in 2nd ch from hook. 1 sc in each ch to last ch. 3 sc in last ch. **Do not** turn. Working across opposite side of foundation ch, 1 sc in each ch to last ch. 3 sc in last ch. Join with sl st to first sc. Fasten off.

Sew Straps to Gloves across back of wrists. Sew buttons to each end of Strap through all thicknesses (buttons are decorative only).

DIAGRAM 1



**KEY**

- = chain (ch)
- = slip stitch (sl st)
- † = single crochet (sc)
- ⌋ = double crochet (dc)
- ⌋ = worked in back loop only

DIAGRAM 2

