

BERNAT® FAIR ISLE TWIST KNIT SLIPPER SOCKS



KNIT | SKILL LEVEL: INTERMEDIATE

ABBREVIATIONS

Approx = Approximately
Beg = Begin(ning)
Cont = Continue(ity)
Dec = Decrease(ing)
K = Knit
K2tog = Knit next 2 stitches together
Pat = Pattern
Rep = Repeat
Rnd(s) = Round(s)

RS = Right side
Ssk = Slip next 2 stitches knitwise one at a time. Pass them back onto left-hand needle, then knit through back loops together
St(s) = Stitch(es)
Tog = Together
WS = Wrong side
Yo = Yarn over

SIZES

To fit woman's shoe size:
5/6 (7/8-9/10-11/12)

Finished Foot length

S (5/6) 9" [23 cm]
M (7/8) 9½" [24 cm]
L (9/10) 10½" [26.5 cm]
XL (11/12) 11" [28 cm]

GAUGE

12 sts and 14 rows = 4" [10 cm] in Fair Isle Pat with larger needles.

INSTRUCTIONS

The instructions are written for smallest size. If changes are necessary for larger sizes the instructions will be written thus (). Numbers for each size are shown in the same color throughout the pattern. When only one number is given in black, it applies to all sizes. For ease of working, circle all numbers pertaining to your size.

SLIPPER SOCKS

Cuff

With MC and set of smaller needles, cast on 42 sts loosely. Divide sts evenly onto 3 needles (14, 14, 14). Join in rnd, placing marker on first st.

MATERIALS

Sizes	5/6	7/8	9/10	11/12	
Bernat® Softee® Chunky™ Twist™ (10.5 oz/300 g; 316 yds/289 m)					
Main Color (MC) Slate (10003)	1	1	1	1	ball
Bernat® Softee® Chunky™ (3.5 oz/100 g; 108 yds/99 m)					
Contrast A Faded Denim (28114)	2	2	2	2	balls

Set of 4 size U.S. 11 (8 mm) and size U.S. 10 (6 mm) double-pointed knitting needles **or size needed to obtain gauge**. Stitch markers. Smooth scrap yarn for 'Afterthought Heel' set-up. 3" [7.5 cm] piece of cardboard for Tassels.

1st to 14th rnds: *K1. P1. Rep from * around.

Switch to set of larger needles.

15th rnd: *K1. yo. K2tog. Rep from * around.

16th rnd: Knit.

Proceed as follows:

Notes:

- When working fair isle technique, st gauge will be tighter than when working plain stocking st. Please take time to measure your gauge in fair isle while knitting in the rnd to ensure proper fitted measurements.
- When working from charts, carry yarn not in use **loosely** across WS of work but never over more than 3 sts. When it must pass over more than 3 sts, weave it over and under color in use on next st or at center point of sts it passes over. The colors are never twisted around one another.
- Knit charts in rnds, reading rows from **right** to left.

Leg

Beg working from Fair Isle Pat Chart I (shown on page 4), joining A when necessary.

1st to 18th rnds: Keeping cont of Chart I, knit in rnds noting 21-st rep will be worked twice.

19th rnd (dec rnd): *Keeping cont of Chart I, with MC, K2tog. With A, K1. With MC, K4. With A, K2. With MC, K3. With A, K2. With MC, K4. With A, K1. With MC, ssk. Rep from * once more. 38 sts.

20th to 25th rnds: Keeping cont of Chart I, knit in rnds, noting 19-st rep will be worked twice.

26th rnd (dec rnd): *Keeping cont of Chart I, with MC, K2tog. (With A, K1. With MC, K6) twice. With A, K1. With MC, ssk. Rep from * once more. 34 sts.

27th to 32nd rnds: Keeping cont of Chart 1, knit in rnds, noting 17-st rep will be worked twice.

33rd rnd (dec rnd): *Keeping cont of Chart I, with MC, K2tog. K2. With A, K2. (With MC. K1. With A, K1) twice. With MC, K1. With A, K2, with MC, K2. ssk. Rep from * once more. 30 sts.

34th to 38th rnds: Keeping cont of Chart I, knit in rnds, noting 15-st rep will be worked twice.

39th rnd (dec rnd): *Keeping cont of Chart I, with MC, K2tog. K5. With A, K1. With MC, K5. ssk. Rep from * once more. 26 sts.

Chart I is complete.

Proceed as follows:

Note: Heel is made using 'Afterthought Heel' technique once Toe Shaping is complete.

Afterthought Heel Set-up:

Notes: Afterthought Heel Set-up is worked on set of 3 needles.

Divide first 13 sts onto 1st needle and next 13 sts onto 2nd needle. With scrap yarn, knit first 13 sts from 1st needle. Break scrap yarn. slide scrap yarn sts back onto 1st needle to be worked again, and proceed as follows:

Foot

Divide sts back onto 3 needles with first 10 sts on 1st needle, next 6 sts on 2nd needle, and last 10 sts on 3rd needle.

With A, knit in rnds from Fair Isle Pat Chart II (shown on page 4), working 26-rnd pat rep as necessary, until work from Afterthought Heel Set-up measures **6 (6½-7½-8) [15 (16.5-19-20.5) cm]**. Break MC.

Notes:

- For smaller sizes, full 26-rnd rep of Chart II may not be necessary.
- For a custom fit, beg toe shaping when foot from Afterthought Heel Set-up measures approx 3" [7.5 cm] less than total length of foot.

Proceed as follows:

Toe Shaping:

Note: Toe is worked on set of 3 needles.

Divide first 13 sts onto 1st needle and last 13 sts onto 2nd needle.

1st rnd: With MC, (K1. ssk. K7. K2tog. K1) twice. 22 sts.

2nd, 4th, 6th rnds: Knit.

3rd rnd: (K1. ssk. K5. K2tog. K1) twice. 18 sts.

5th rnd: (K1. ssk. K3. K2tog. K1) twice. 14 sts.

7th rnd: (K1. ssk. K1. K2tog. K1) twice. 10 sts.

Break yarn leaving yarn end 18" [45.5 cm] long. Graft sets of 5 sts tog.

Afterthought Heel

Carefully remove scrap yarn from Afterthought Heel Set-up, placing released sts divided onto 2 needles to work in same way as Toe. Join MC leaving 12" [30.5 cm] yarn end.

Heel Shaping: (RS). Work in rnds as for Toe Shaping taking care to pull yarn tightly between needles to help close any gaps.

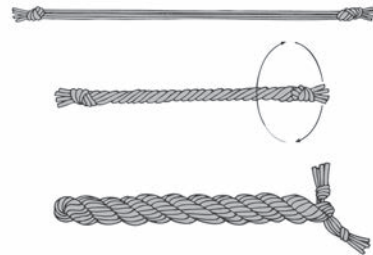
Weave in ends. If needed, use yarn ends to close up any gaps in heel.

FINISHING

Twisted Cord (make 2): Cut 1 length each of MC and A 80" [203 cm] long. Hold both strand tog and with someone holding other end, twist strand to the right until cord begins to curl. Fold the 2 ends tog and tie in a knot so it will not unravel. The strands will now twist themselves tog.

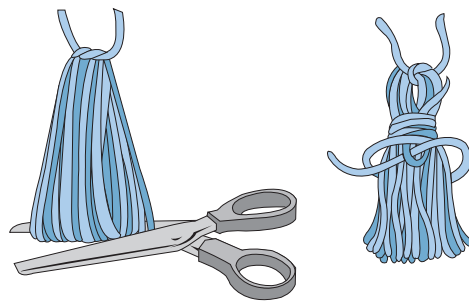
Weave Twisted Cord through 'yo' holes made in 15th rnd of Cuff, noting that ends should tie at outside of leg. Rep for second Slipper Sock.

Twisted Cord



Tassel (Make 4): Wrap yarn around a 3" [7.5 cm] piece of cardboard 8 times. Tie securely at one end. Cut across other end. Wrap A 3 times around Tassel 1" [2.5 cm] from tied end and fasten securely. Sew Tassels to each loose end of Twisted Cord.

Tassel



Grafting Diagram

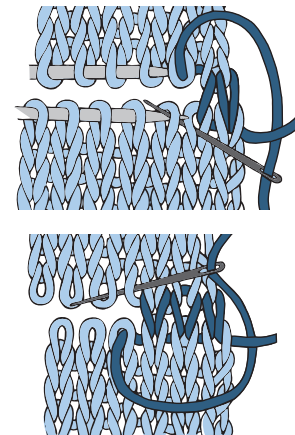


Chart I

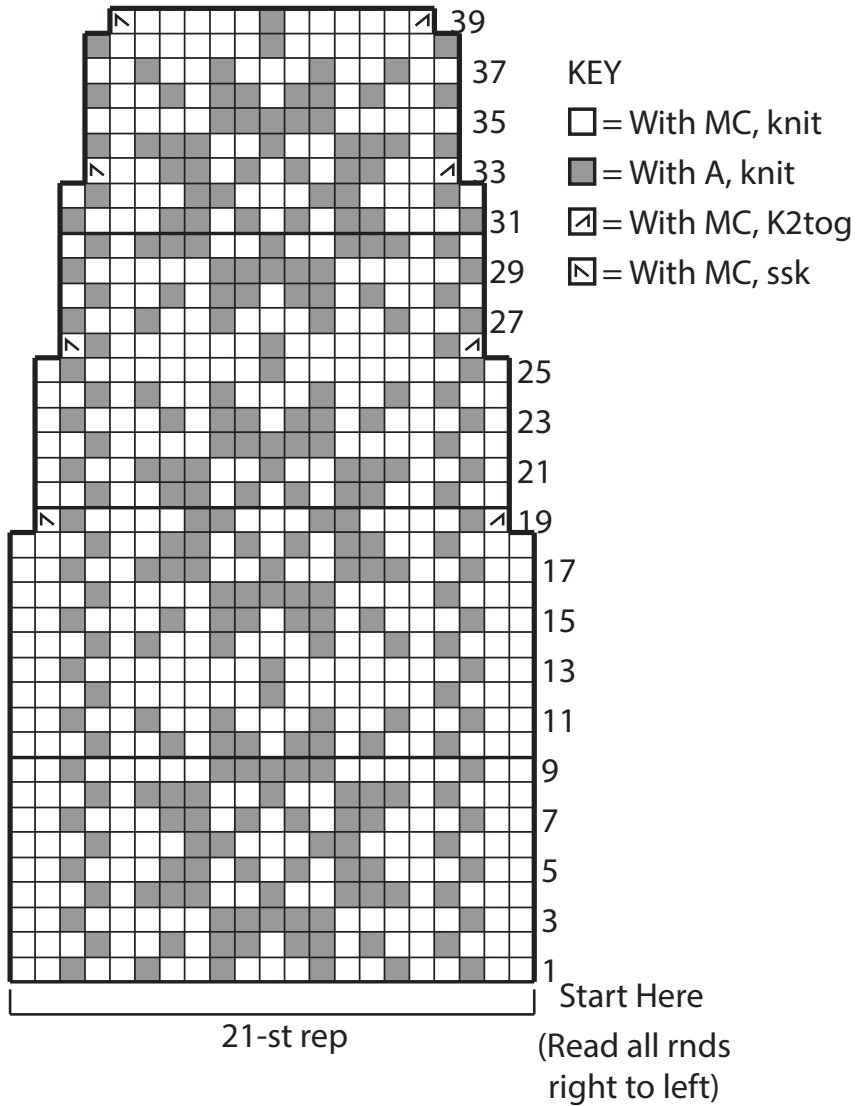


Chart II

