



CROCHET | SKILL LEVEL: EASY

## ABBREVIATIONS

<b>Approx</b> =	<b>Dc</b> = Double crochet	<b>Sl st</b> = Slip stitch
Approximately	<b>Pat</b> = Pattern	<b>Sp(s)</b> = Space(s)
<b>Beg</b> = Beginning	<b>Rep(s)</b> = Repeat(s)	<b>St(s)</b> = Stitch(es)
<b>Ch</b> = Chain(s)	<b>RS</b> = Right side	<b>WS</b> = Wrong side
<b>Cont</b> = Continue(ity)	<b>Sc</b> = Single crochet	

## MEASUREMENTS

Approx 30 x 80" [76 x 178 cm],  
excluding fringe.

## GAUGES

12 sc and 13 rows = 4" [10 cm].  
3 pat reps and 7 rows = 4" [10 cm]  
in pat.

## INSTRUCTIONS

### Stripe Pat

A – 9 rows.  
(B – 2 rows. A – 2 rows) 3 times.  
B – 8 rows.  
(C – 2 rows. B – 2 rows) 3 times.  
C – 8 rows.  
(D – 2 rows. C – 2 rows) 3 times.  
D – 24 rows.  
(C – 2 rows. D – 2 rows) 3 times.  
C – 8 rows.

(B – 2 rows. C – 2 rows) 3 times.  
B – 8 rows.  
(A – 2 rows. B – 2 rows) 3 times.  
A – 10 rows.  
These 147 rows form Stripe Pat.

## SHAWL

### Notes:

- Ch 3 at beg of row counts as dc.
- Shawl is reversible, there is no RS or WS.

With A, ch 96 (multiple of 4 ch).  
See diagram on page 2.

**Foundation row:** 3 dc in 4th ch from hook. \*Skip next 3 ch. (1 sc. Ch 1. 3 dc) in next ch. Rep from \* to last 4 ch. Skip next 3 ch. 1 sc in last ch. Turn. 23 groups of 3-dc.

## MATERIALS

**Red Heart® Super Saver® Brushed** (5 oz/141 g; 253 yds/231 m)

<b>Contrast A</b> Mink (5031)	<b>2 balls</b>
<b>Contrast B</b> Soft Mink (5030)	<b>3 balls</b>
<b>Contrast C</b> Dusty Pink (5071)	<b>2 balls</b>
<b>Contrast D</b> Clay (5092)	<b>2 balls</b>

Size U.S. I/9 (5.5 mm) crochet hook **or size needed to obtain gauge.**  
Yarn needle.

**2nd row:** Ch 3. 3 dc in first sc. \*Skip next 3 dc. 1 sc in next ch-3 sp. 3 dc in next sc. Rep from \* to last 3 dc and turning ch-3. Skip next 3 dc. 1 sc in top of ch-3. Turn.

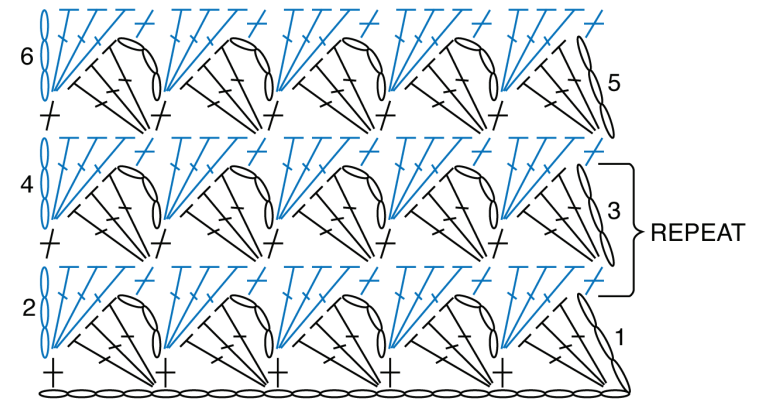
**3rd row:** Ch 3. 3 dc in first sc. \*Skip next 3 dc. (1 sc. Ch 3. 3 dc) in next sc. Rep from \* to last 3 dc and turning ch-3. Skip next 3 dc. 1 sc in top of ch-3. Turn.

First 3 rows of Stripe Pat are complete.

Keeping cont of Stripe Pat, rep 2nd and 3rd rows until all 147 rows of Stripe Pat are complete. Fasten off.

**Fringe:** With RS facing, join A with sl st to first sc at top of Shawl. \*Ch 15. Sl st in 2nd ch from hook and each of next 13 ch. 1 sc in each of next 3 sts. Rep from \* to last sc. Ch 15. Sl st in 2nd ch from hook and each of next 13 ch. Sl st in last sc. Fasten off.

With RS facing, join A with sl st to first ch at foundation row of Shawl. \*Ch 15. Sl st in 2nd ch from hook and each of next 13 ch. 3 sc in next ch-3 sp on foundation row. Rep from \* to last turning ch-3. Ch 15. Sl st in 2nd ch from hook and each of next 13 ch. Sl st in corner ch. Fasten off.



REDUCED SAMPLE OF PATTERN

