



Patons® Canadiana

Patons® DECOR

HARLEQUIN TEXTURE

MEASUREMENT

Approx 42 x 63 ins [112.5 x 157.5 cm].

TENSION

20 sts and 32 rows = 4 ins [10 cm] in pat.

MATERIALS

Patons Canadiana (100 g/3.5 oz)

or **Patons Decor** (100 g/3.5 oz)

Main Color (MC) (Black) 7 balls

Contrast A (White) 7 balls

Size 4.5 mm (U.S. 7) circular knitting needle 36 ins [90 cm] long **or size needed to obtain tension.**

ABBREVIATIONS

KW = Knit, wrapping yarn twice around needle.

yb = bring yarn to back of work.

yf = bring yarn to front of work.

INSTRUCTIONS

With MC, cast on 211 sts. **Do not join.** Working back and forth across needle, proceed as follows: Work 3 rows garter st (knit every row), noting that first row is **WS**.

Proceed in pat as follows:

1st row: (RS). Work 1st row of Chart to last st reading row from **right** to left, noting the 30-st rep will be worked 7 times. With MC, K1.

2nd row: With MC, K1. Work 2nd row of Chart to end of row reading row from **left** to right.

3rd row: Work 3rd row of Chart to last st. With A, K1.

4th row: With A, K1. Work 4th row of Chart to end of row.

Chart is now in position. 92 rows of Chart I form pat.

Work 1st to 92nd rows of Chart 5 times more.

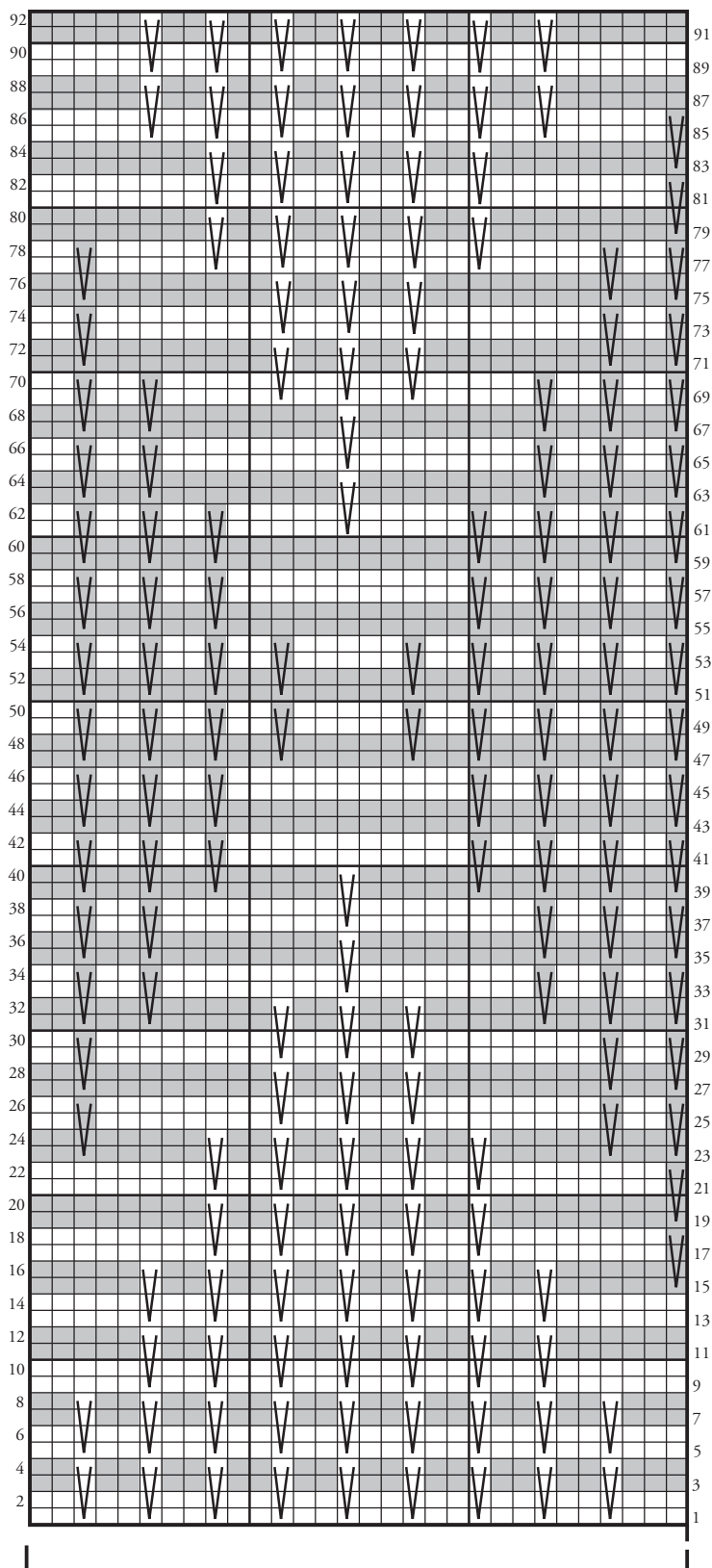
Work 3 rows garter st, thus ending with **WS** facing for next row. Cast off knitways.

Side edging: With RS of work facing and MC, pick up and knit 279 sts along each side edge of Afghan. Work 2 rows in garter st. Cast off knitways (WS).



ABBREVIATIONS: www.patonsyarns.com/glossary

CHART




Start Here


30 st rep

Key

 = MC, knit on right and wrong side rows.

 = **1st row:** (Right side). With MC, KW.
2nd row: yf. S1P (dropping extra loop).
3rd row: yb. S1P.
4th row: yf. S1P.

 = Contrast A, knit on right and wrong side rows.

 = **1st row:** (Right side). With A, KW.
2nd row: yf. S1P (dropping extra loop).
3rd row: yb. S1P.
4th row: yf. S1P.

 Patons

... a part of your life.

P.O. Box 40, Listowel ON N4W 3H3