



## MATERIALS

**Bernat® Roving™** ((3.5 oz/100 g; 120 yds/109 m)

Sizes	XS/S	M	L	XL	2/3XL	4/5XL	
<b>Main Color (MC)</b> Rice Paper (00100)	4	4	5	5	5	6	<b>balls</b>
<b>Contrast A</b> Putty (00032)	4	4	5	5	5	6	<b>balls</b>
<b>Contrast B</b> Flint (00033)	2	2	2	2	3	3	<b>balls</b>

Sizes U.S. 10½ (6.5 mm) and U.S. 11 (8 mm) knitting needles **or size needed to obtain gauge**. 3 st holders. Separating zipper 20" [50 cm] long.

 **KNIT | SKILL LEVEL: INTERMEDIATE**

## ABBREVIATIONS

<b>Alt</b> = Alternate(ing)	<b>P</b> = Purl
<b>Approx</b> = Approximately	<b>PM</b> = Place marker
<b>Beg</b> = Beginning	<b>Rep</b> = Repeat
<b>Cont</b> = Continue(ity)	<b>RS</b> = Right side
<b>Dec</b> = Decrease(ing)	<b>Sl1</b> = Slip next stitch knitwise
<b>Inc</b> = Increase(ing)	<b>St(s)</b> = Stitch(es)
<b>K</b> = Knit	<b>Tog</b> = Together
<b>K2tog</b> = Knit next 2 stitches together	<b>Work2tog</b> = Work next 2 stitches together
<b>Kfb</b> = Knit into front an back of next stitch	<b>WS</b> = Wrong side

## MEASUREMENTS

### Finished bust/chest:

<b>XS/S</b>	<b>40" [101.5 cm]</b>
<b>M</b>	<b>44" [112 cm]</b>
<b>L</b>	<b>48" [122 cm]</b>
<b>XL</b>	<b>50" [127 cm]</b>
<b>2/3XL</b>	<b>58" [147.5 cm]</b>
<b>4/5XL</b>	<b>64" [162.5 cm]</b>

## GAUGE

11 sts and 16 rows = 4" [10 cm] with larger needles in stocking st.

## INSTRUCTIONS

*The instructions are written for smallest size. If changes are necessary for larger sizes the*

*instructions will be written thus ( ). Numbers for each size are shown in the same color throughout the pattern. When only one number is given in black, it applies to all sizes.*

## BACK

With smaller needles and A, cast on **57 (61-67-69-79-89)** sts.

**1st row:** (RS). K1. \*P1. K1. Rep from \* to end of row.

**2nd row:** P1. \*K1. P1. Rep from \* to end of row.

Rep last 2 rows rows of (K1. P1) ribbing for 3" [7.5 cm], ending on a 2nd row.

Change to larger needles and proceed in stocking st for 2 rows, ending on a purl row.

With MC, work 2 rows in stocking st. Work Chart I in stocking st until row 52 of Chart is complete, reading **knit** rows from **right** to **left** and **purl** rows from **left** to **right**. (Chart I is shown on page 5)

**Raglan shaping:** Keeping cont of Chart I, cast off 2 sts beg next 2 rows. **53 (57-63-65-75-85)** sts. Dec 1 st each end of needle on next and every following alt row **13 (13-13-12-10-5)** times more. **25 (29-35-39-53-73)** sts. Purl 1 row.

Dec 1 st each end of needle on next **2 (4-6-8-14-24)** rows. **21 (21-23-23-25-25)** sts. Cast off.

**Pocket Linings** (make 2).

With larger needles and A, cast on 15 sts.

Work 15 rows in stocking st. Break yarn. Leave sts on a st holder.

## LEFT FRONT

\*\*With smaller needles and A, cast on **31 (33-35-37-41-47)** sts.

Work 3" [7.5 cm] in (K1, P1) ribbing as given for Back, ending on a 2nd row and inc **0 (0-1-0-1-0)** st in center of last row. **31 (33-36-37-42-47)** sts.\*\*

Change to larger needles and proceed as follows:

**Next row:** (RS). With A, knit to last 2 sts. P1. K1.

**Next row:** SI1P. Purl to end of row.

**Next row:** With MC, knit to last 2 sts. P1. K1.

**Next row:** SI1P. Purl to end of row.

**Next row:** Work 1st row of Chart II to end of row, reading row from **right** to **left**. With MC, P1. K1.

**Next row:** With MC, SI1P. P1. Work 2nd row of Chart II to end of row, reading row from **left** to **right**.

(Chart II is shown on page 6). Chart II is now in position.

(**Note:** Center front 2 sts are not shown on Chart II and are worked in MC throughout).

Cont working Chart II until row 14 of Chart is complete.

**Pocket placement: Next row:** (RS). Work Chart across **7 (9-12-13-18-23)** sts. Cast off next 15 sts. Pat to last 2 sts. With MC, P1. K1.

**Next row:** With MC, SI1P. P1. Work Chart across 7 sts. P15 from pocket st holder. Work Chart to end of row. Work Chart II until row 52 of Chart is complete.

**Raglan shaping:** Cast off 2 sts beg next row (armhole edge). **29 (31-34-35-40-45)** sts.

Work 1 row even.

Dec 1 st at armhole edge on next and every following alt row 6 times more. **22 (24-27-28-33-38)** sts.

**Sizes XS/S, M, L, XL and 2/3XL only: Neck shaping: Next row:** (WS). Cast off 3 sts. Work Chart to end of row. **19 (21-24-25-30)** sts.

**Next row:** Work2tog. Work Chart to last 2 sts. Work2tog.

**Next row:** Work2tog. Work Chart to end of row.

Rep last 2 rows twice more. **10 (12-15-16-21)** sts.

**Next row:** (RS). Work2tog. Work Chart to last 2 sts. Work2tog.

**Next row:** Work Chart to end of row.

Rep last 2 rows **3 (4-4-3-1)** time(s) more. **2 (2-5-8-17)** sts.

**Sizes L, XL and 2/3XL only: Next row:** (RS). Work2tog. Work Chart to last 2 sts. Work2tog.

**Next row:** Work Chart to last 2 sts. Work2tog.

Rep last 2 rows **0 (1-4)** time(s) more. 2 sts.

**Size 4/5XL only: Neck shaping:**

**Next row:** (WS). Cast off 3 sts. Work Chart to last 2 sts. Work2tog. 34 sts.

**Next row:** Work2tog. Work Chart to last 2 sts. Work2tog.

Rep last row **6** times more. 20 sts.

**Next row:** (WS). Work Chart to last 2 sts. Work2tog.

**Next row:** Work2tog. Work Chart to last 2 sts. Work2tog.

Rep last 2 rows **5** times more. 2 sts.

**All sizes: Next row:** P2.

**Next row:** K2tog. Fasten off.

## RIGHT FRONT

Work from \*\* to \*\* as given for Left Front.

Change to larger needles, A and proceed as follows:

**Next row:** (RS). SI1. P1. Knit to end of row.

**Next row:** Purl.

**Next row:** With MC, SI1. P1. Knit to end of row.

**Next row:** Purl.

**Next row:** With MC, S11. P1. Work 1st row of Chart III to end of row, *reading row from right to left*.

**Next row:** Work 2nd row of Chart III to last 2 sts, *reading row from left to right*. With MC, P2. (Chart III is shown on page 6). Chart III is now in position.

(**Note:** Center front 2 sts are not shown on Chart III and are worked in MC throughout). Work Chart III until row 14 of Chart is complete.

**Pocket placement: Next row:** (WS). With MC, S11. P1. Work Chart across 7 sts. Cast off next 15 sts. Work Chart to end of row.

**Next row:** Work Chart across **7 (9-12-13-18-23)** sts. P15 from pocket st holder. Pat to last 2 sts. With MC, P2. Work Chart III until row 53 of Chart is complete.

**Raglan shaping:** Cast off 2 sts beg next row (armhole edge). **29 (31-34-35-40-45)** sts. Dec 1 st at armhole edge on next and every alt row 6 times more. **22 (24-27-28-33-38)** sts.

**Sizes XS/S, M, L, XL and 2/3XL only: Neck shaping: Next row:** (WS). Work Chart to last 3 sts. Cast off last 3 sts.

**Next row:** Rejoin yarn to rem sts. Work2tog (neck edge). Work Chart to last 2 sts. Work2tog. **Next row:** Work Chart to last 2 sts. Work2tog. Rep last 2 rows twice more. **10 (12-15-16-21)** sts.

**Next row:** (RS). Work2tog. Work Chart to last 2 sts. Work2tog. **Next row:** Work Chart to end of row. Rep last 2 rows **3 (4-4-3-1)** time(s) more. **2 (2-5-8-17)** sts.

**Sizes L, XL and 2/3XL only: Next row:** Work2tog. Work Chart to last 2 sts. Work2tog. **Next row:** Work2tog. Work Chart to end of row. Rep last 2 rows **0 (1-4)** time(s) more. 2 sts.

**Size 4/5XL only: Neck shaping: Next row:** (WS). Work2tog. Work Chart to last 2 sts. Cast off last 3 sts. 34 sts.

**Next row:** Rejoin yarn to rem sts. Work2tog (neck edge). Work Chart to last 2 sts. Work2tog.

**Next row:** Work2tog. Work Chart to last 2 sts. Work2tog. Rep last row 5 times more. 20 sts.

**Next row:** (WS). Work2tog. Work Chart to end of row.

**Next row:** Work2tog. Work Chart to last 2 sts. Work2tog. Rep last 2 rows 5 times more. 2 sts.

**All sizes: Next row:** P2.

**Next row:** K2tog. Fasten off.

## SLEEVES

With smaller needles and A, cast on **29 (29-31-31-33-33)** sts. Work 3" [7.5 cm] in (K1. P1) ribbing as given for Back, ending with a 2nd row and inc **1 (1-1-1-3-3)** st(s) evenly across last row. **30 (30-32-34-36-36)** sts.

Change to larger needles and work Chart IV for Left Sleeve or Chart V for Right Sleeve in stocking st to end of Chart, *reading knit rows from right to left and purl rows from left to right* and inc 1 st each end of needle on 7th and every following 6th row to **44 (44-46-48-50-50)** sts.

(Charts IV and V shown on page 7).

**Raglan shaping:** Cast off 2 sts beg next 2 rows. **40 (40-42-44-46-46)** sts.

Dec 1 st each end of needle on next and every alt row **13 (13-15-16-17-17)** times more, then dec 1 st each end of needle on every row **2 (2-0-0-0-0)** times more. Cast off rem **8 (8-8-10-10-10)** sts.

## FINISHING

Sew raglan seams.

**Collar:** With smaller needles and A, cast on 3 sts.

**1st row:** (RS). S11. Kfb twice. 5 sts.

**2nd row:** S11. Knit to end of row.

**3rd row:** S11. Kfb. Knit to last 2 sts. Kfb. K1.

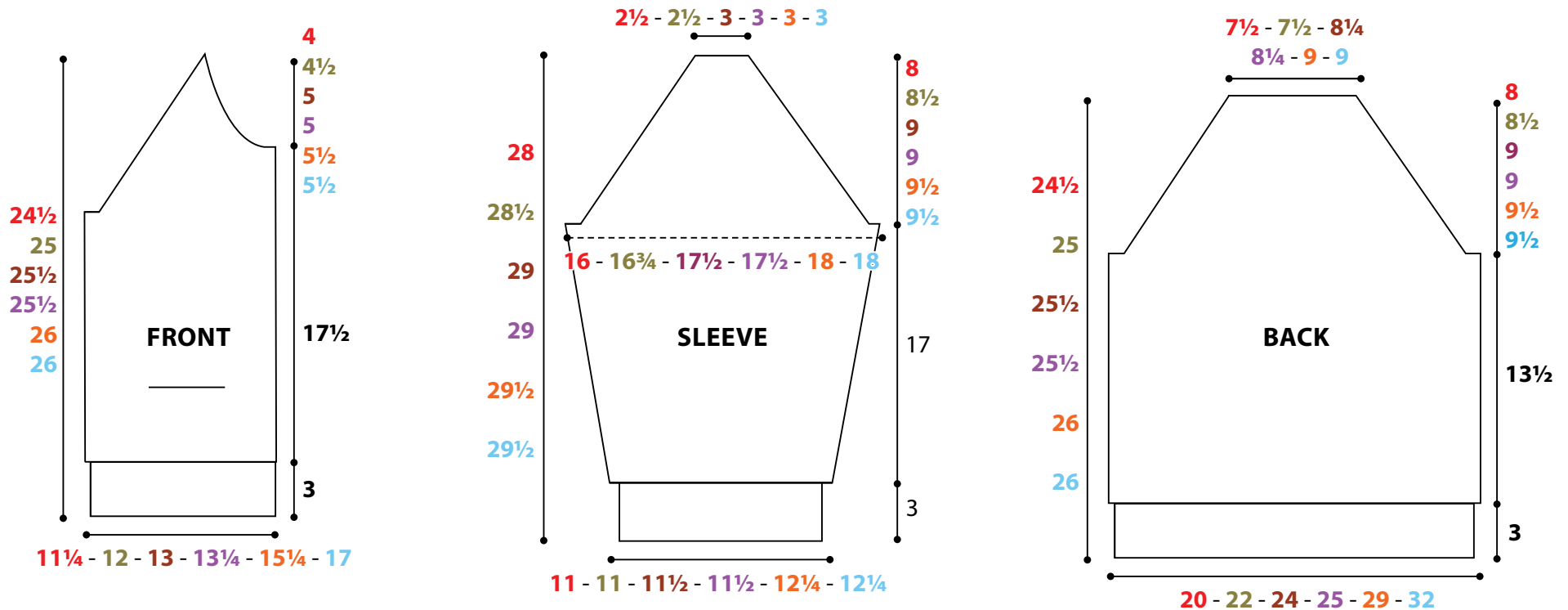
**4th row:** S11. Knit to end of row. Rep last 2 rows **8 (8-9-9-10-10)** times more. **23 (23-25-25-27-27)** sts. Place marker at each end of needle.

Cont in garter st (knit every row) until Collar from markers measures **13½ (14-14½-14½-15-15)" [34.5 (35.5-37-37-38) cm]**, ending on a WS row.

**Next row:** S11. K2tog. Knit to last 2 sts. K2tog.

**Next row:** S11. Knit to end of row. Rep last 2 rows **8 (8-9-9-10-10)** times more. 3 sts. Cast off.

Sew Collar to neck edge. Sew side and sleeve seams. Sew pocket linings in position on WS. Sew zipper in position.



**Chart I**  
**JACKET BACK**

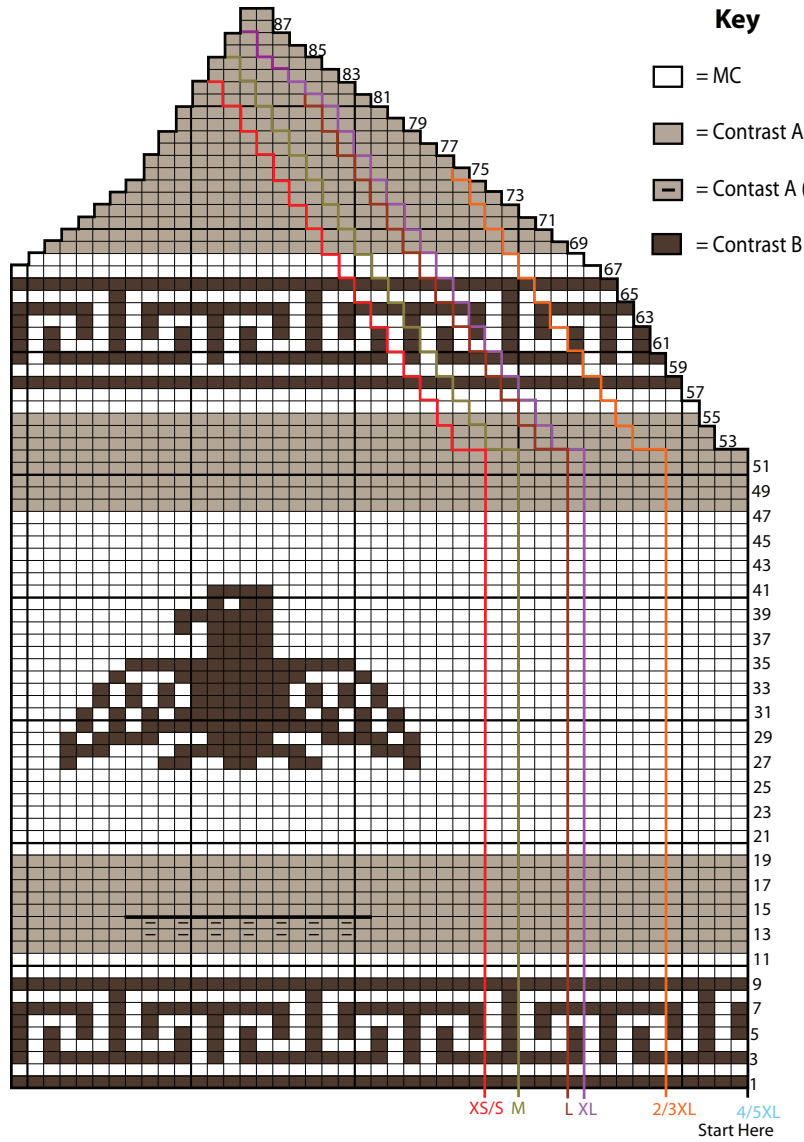
**Key**

- = MC
- = Contrast A
- = Contrast B

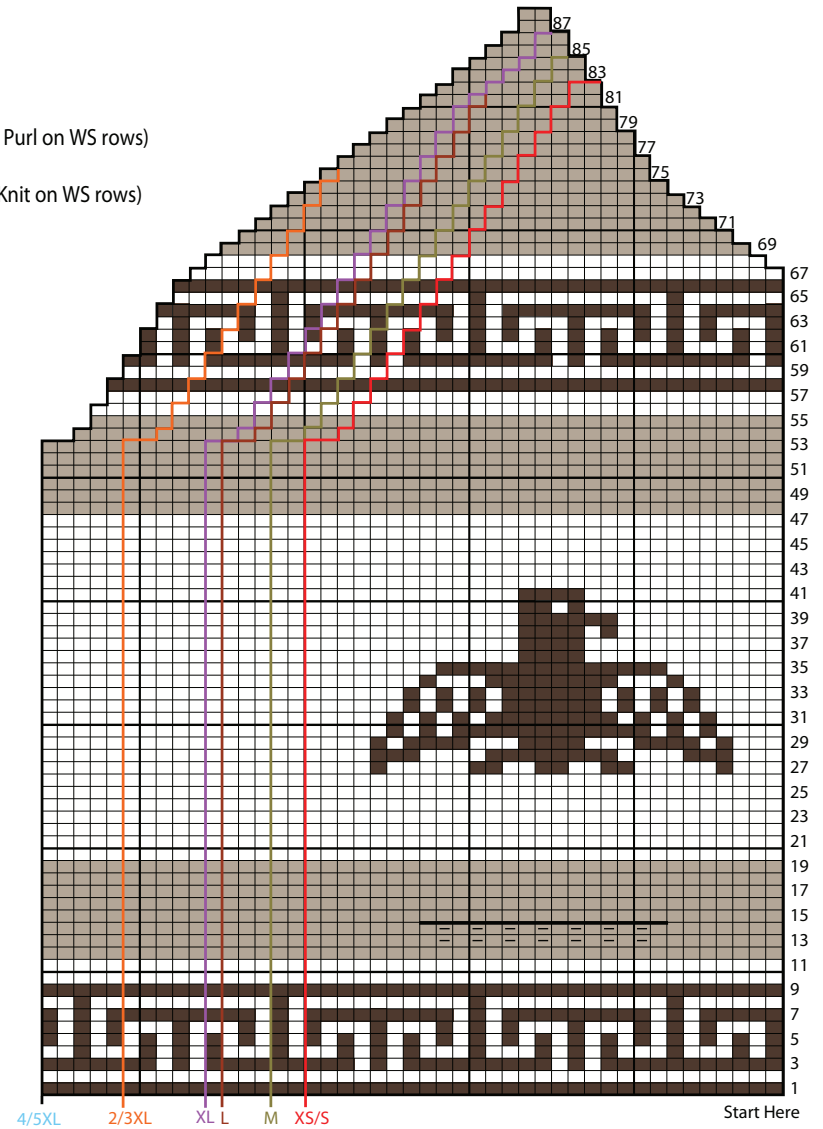




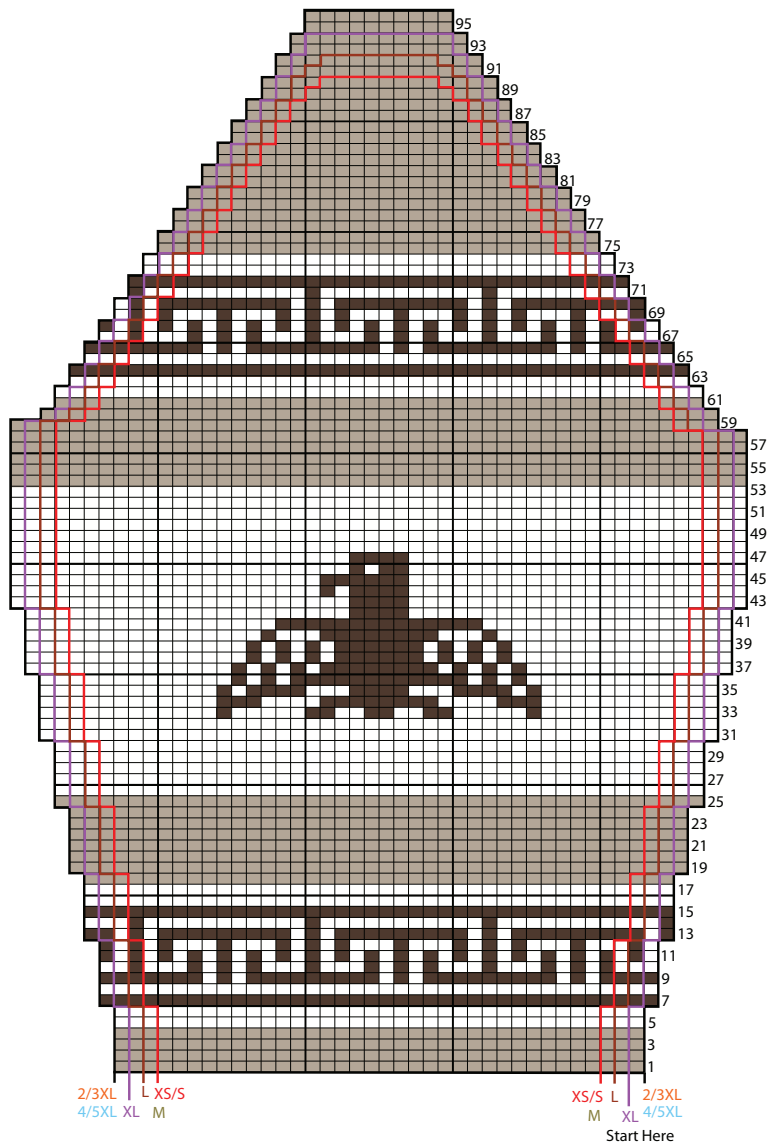
**Chart II**  
**JACKET LEFT FRONT**



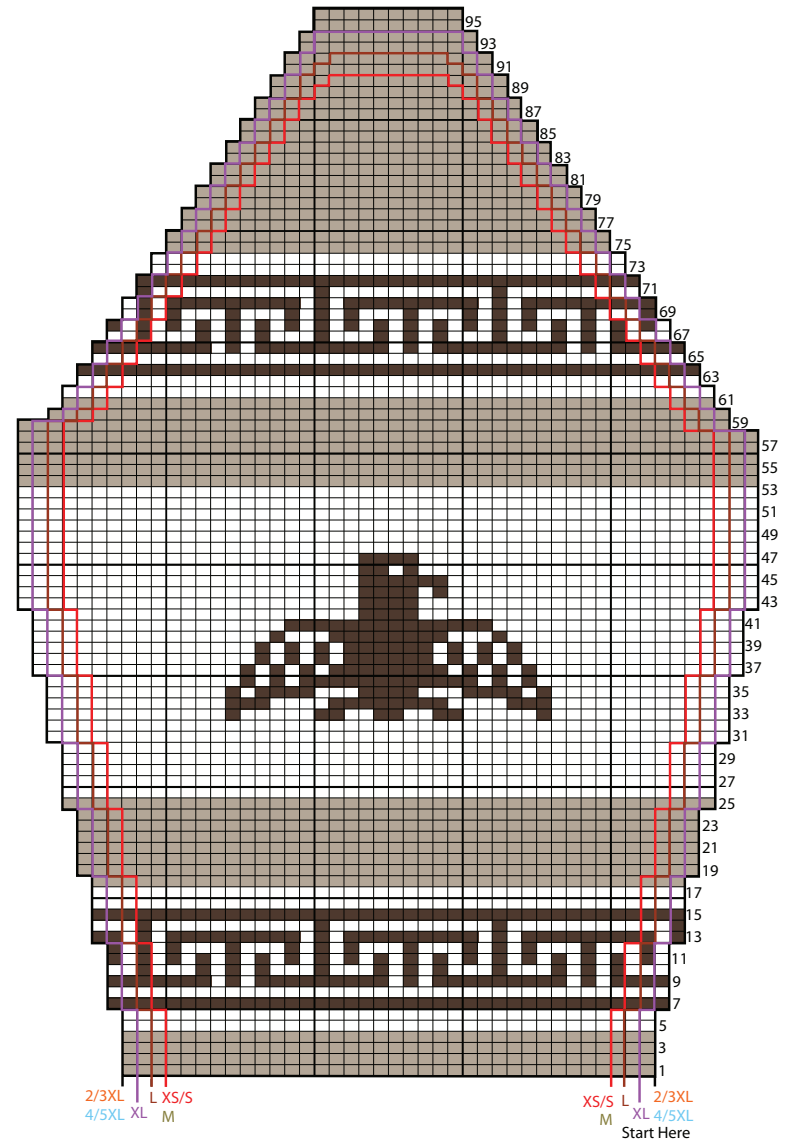
**Chart III**  
**JACKET RIGHT FRONT**



**Chart IV**  
JACKET LEFT SLEEVE



**Chart V**  
JACKET RIGHT SLEEVE



**Key**

- = MC
- = Contrast A
- = Contrast B