



chic sheep 
by Marly Bird™

Perfectly Panache Chic Poncho

Ooh! Everyone will enjoy having this poncho as the perfect layer of warmth and style. The one size fit makes it easy to crochet for gifting.

LW5901

©2017 Coats & Clark



crochet



Designed by Kristin Omdahl

What you will need:

RED HEART® Chic Sheep by Marly Bird™:
10 balls of 5619 Regal

Susan Bates® Crochet Hook: 5mm [US H-8]

Yarn needle, Stitch Markers

GAUGE: 3 shells = 4" (10 cm); 8 rows = 3.25" (8cm). **CHECK YOUR GAUGE. Use any size hook to obtain the gauge.**

BUY YARN



RED HEART® Chic Sheep by Marly Bird™, Art. R170 100% Merino Wool available 3.5 oz (100 g), 186 yd (170 m) balls



Project measures 48" [122cm] in width, 22" [56 cm] in length.

FRONT

Chain 218

Row 1 (RS): Sc in 2nd ch from hook, *skip 2 ch, 5 dc in next ch (shell made), skip 2 ch, sc in next ch; repeat from * across. Turn- 36 shells.

Row 2: Ch 4 (counts as dc, ch 1 throughout), dc in first sc, *skip 2 dc, sc in next dc, skip 2 dc**, (dc, ch 3, dc) in next sc; repeat from * across ending at **, (dc, ch 1, dc) in last sc. Turn.

Row 3: Ch 3 (counts as dc throughout), 2 dc in first dc, *sc in next sc**, 5 dc in next ch-3 space; repeat from * across ending at **, 3 dc in 3rd ch of tch. Turn.

Row 4: Ch 1, sc in first dc, *skip 2 sc, (dc, ch3, dc) in next sc, skip 2 sc, sc in next dc; repeat from * across to tch, sc in top of tch. Turn.

Row 5: Ch 1, sc in first sc, *5 dc in next ch-3 space, sc in next sc; repeat from * across. Turn.
Repeat Rows 2-5 twelve more times.
Fasten off.

BACK

Note: Back panel starts by working in the opposite side of the foundation chain on the front panel.

Row 1: Join yarn with slip st to opposite side of foundation chain on RS of Front (in the same ch as the first sc of Row 1 on Front), ch 1, sc in same ch. *skip 2 ch, 5 dc in next ch, skip 2 ch, sc in next ch; repeat from * 14 more times. Ch 35 (creates neck opening), skip 35 ch; sc in next ch. Repeat from * across to end. Turn- 30 shells.

Row 2: Ch 4, dc in first sc, *skip 2 dc, sc in next dc, skip 2 dc, (dc, ch 3, dc) in next sc; repeat from * across to neck opening. [Skip 2 ch, sc in next ch, skip 2 ch, (dc, ch 3, dc) in next ch] 5 times, skip 2 ch, sc in next ch, skip 2 ch, (dc, ch 3, dc) in next sc on back. Repeat from * across to end. Turn.

Rows 3 - 5: Repeat Rows 3-5 of Front Repeat Rows 2-5 of Front twelve more times. Fasten off.

COWL

Note: Cowl is worked in opposite side of foundation chain of Front and Back Panel for seamless stitch pattern.

Note: The stitch pattern was worked in rows for Front and Back and is now worked in rounds for Cowl.

Round 1: Join yarn with slip st on RS Back on opposite side of foundation chain in any chain which a sc was worked on Row 1. Ch 1, sc in same ch, *skip 2 ch, 5 dc in next ch, skip 2 ch**, sc in next ch; repeat from * around ending at **, slip st to first sc. Do not turn- 12 shells.

Round 2: Ch 6 (counts as dc, ch 3 throughout), dc in first sc, *skip 2 dc, sc in next dc, skip 2 dc**, (dc, ch3, dc) in next sc; repeat from * around ending at **, slip st to 3rd ch of beginning ch. Do not turn.

Round 3: Slip st into first ch-space (formed by beginning ch), ch 3, 4 dc in same ch-space, *sc in next sc**, 5 dc in next ch-3 space; repeat from * around ending at **, slip st to top of beginning ch 3. Do not turn.

continued...





Round 4: Slip st in next 2 dc, ch 1, sc in same dc, *skip 2 dc, (dc, ch 3, dc) in next sc, skip 2 dc**, sc in next dc; repeat from * around ending at **, slip st to first sc. Do not turn.

Round 5: Ch 1, sc in first sc, *5 dc in next ch-3 space**, sc in next sc; repeat from * around ending at **, slip st to first sc. Do not Turn.

Repeat Rounds 2 - 5 three more times. Fasten off.

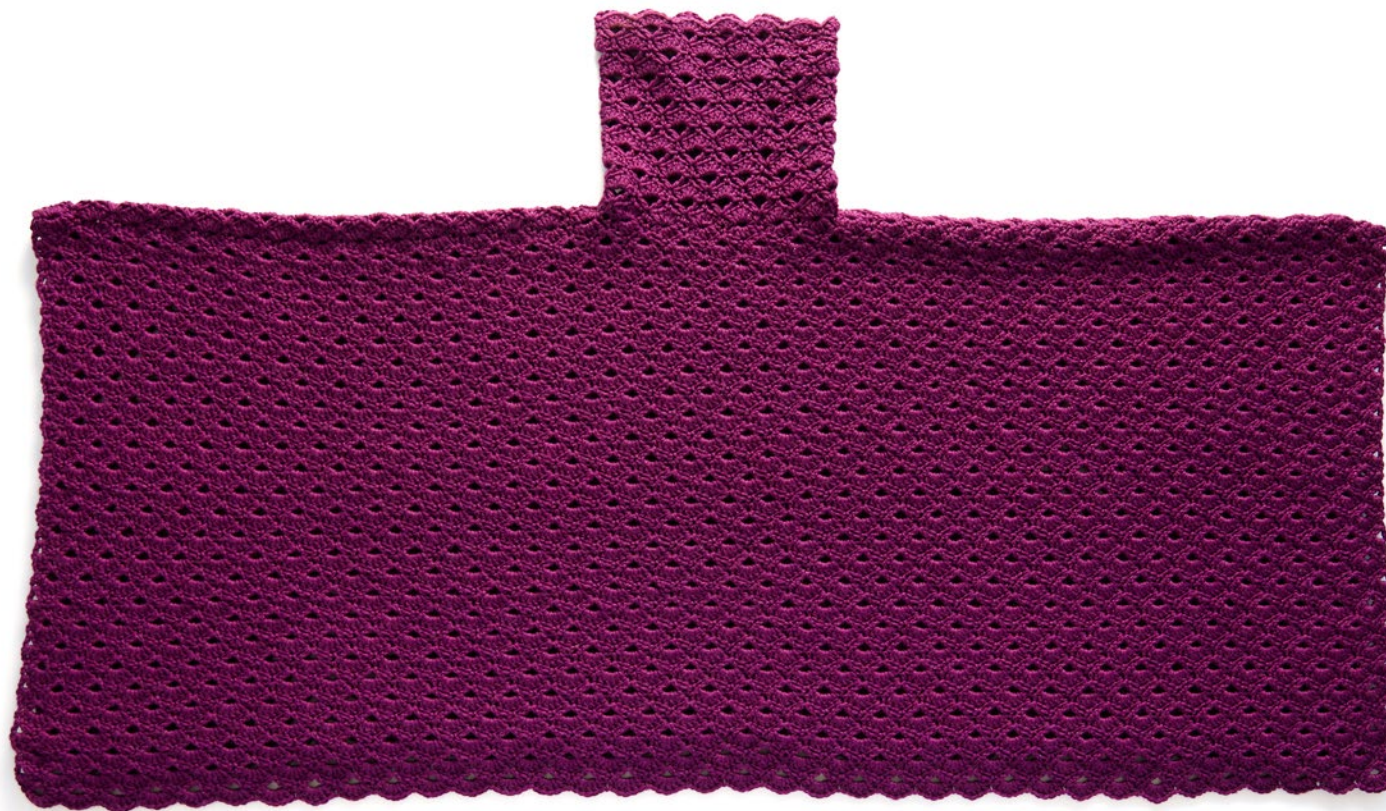
FINISHING

Weave in all loose ends. Soak project in cool bath, wrap in towels and gently roll out water. Lay project out to schematic size and pin in place to dry.

ABBREVIATIONS

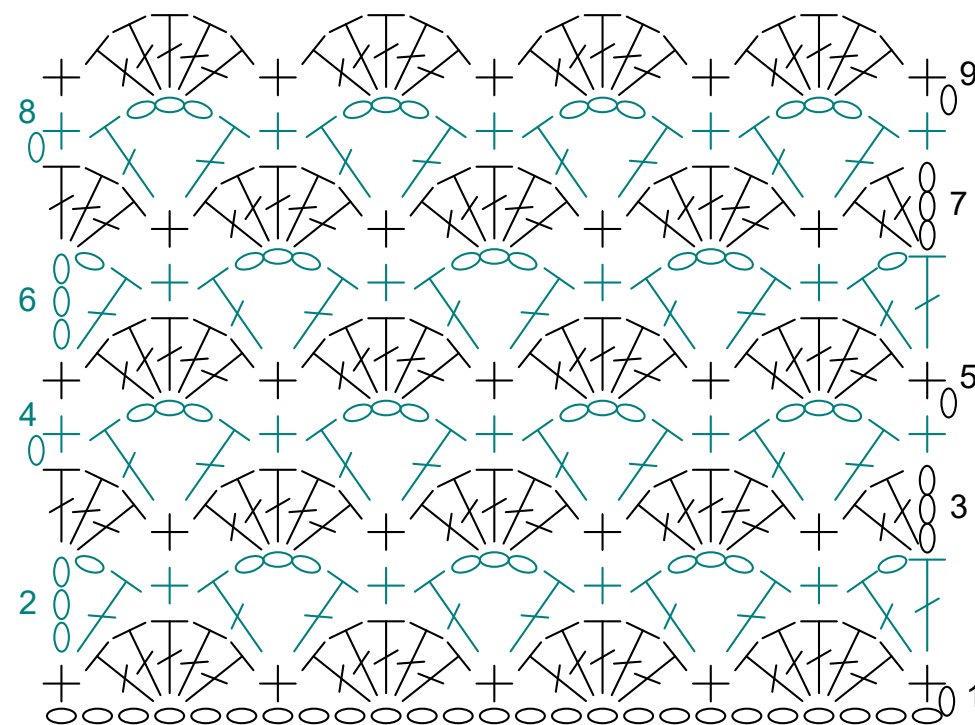
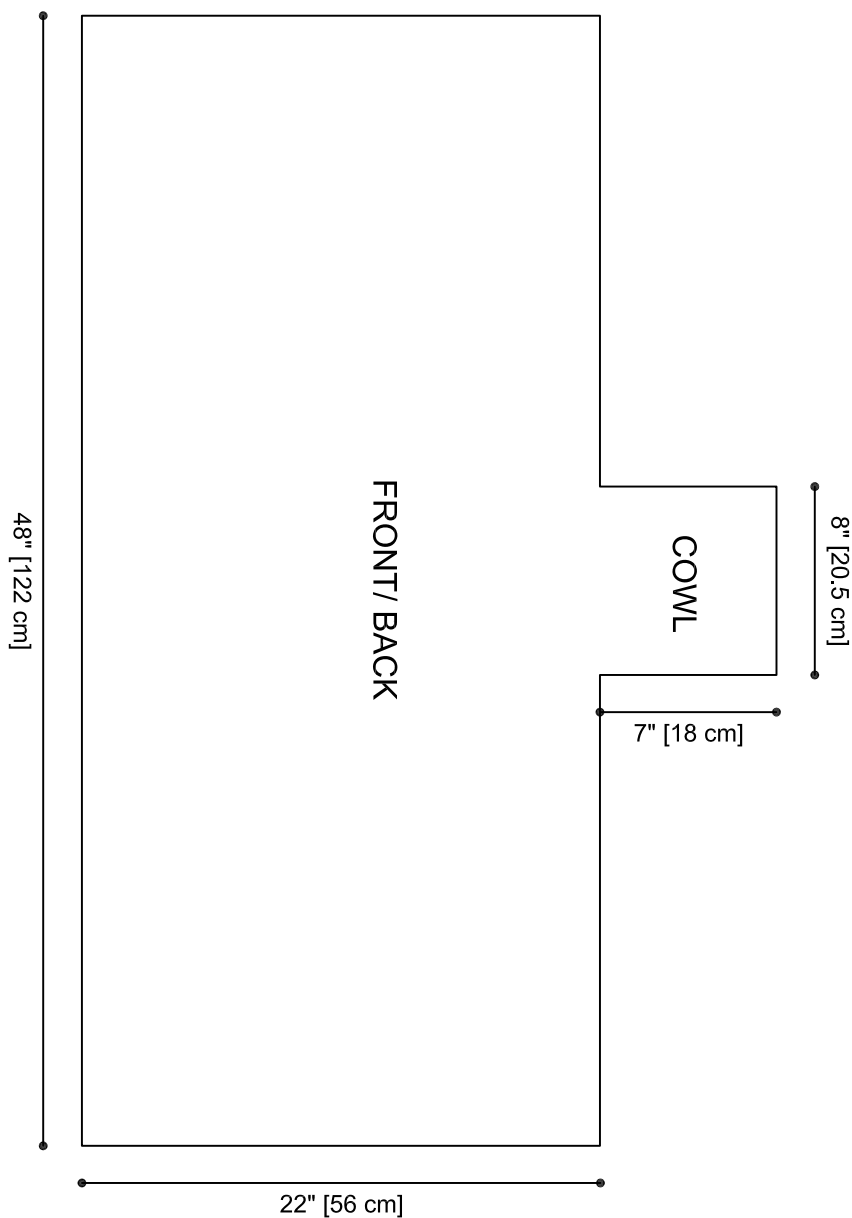
ch = chain; **st(s)** = stitch(es); **slip st** = slip stitch; **sc** = single crochet; **dc** = double crochet; **tch** = turning chain; **RS** = right side; **WS** = wrong side; **()** = work directions in parentheses in same st; **[]** = work directions in brackets the number of times specified; * = repeat whatever follows the * as indicated.

Note from Marly: I would like to thank my long time friend Kristin Omdahl, for her contribution to the **Chic Sheep by Marly Bird™** collection. I've always admired Kristin's ability to design the perfect items for every yarn she uses. No matter if it is a solid stitch or crazy lace, you can count on something that is fashionable and stylish. Her timeless design, Perfectly Panache Poncho, is a favorite of the collection. To learn more about Kristin Omdahl and her designs visit KristinOmdahl.com



See next 2 pages for schematic, stitch diagram and alternate photo





Perfectly Panache Stitch Diagram

Symbols Key

- chain
- + single crochet
- ⌈ double crochet



