



CROCHET
SKILL LEVEL
INTERMEDIATE



Designed by Rebecca Velasquez

What you will need:

RED HEART® Unforgettable™:
5 (6, 7, 8, 9, 10, 11) balls 3932
Springtime

Susan Bates® Crochet Hooks:
5.5mm [US I-9]

4 locking stitch markers, yarn
needle

GAUGE: 16 sts = 4½" [11.5
cm]; 8 rows = 4" [10 cm]
over double crochet (dc)
and BEFORE blocking.

**CHECK YOUR GAUGE. Use
any size hook to obtain the
gauge.**



RED HEART®
Boutique
Unforgettable™

Art. E793 available in 3.5 oz
(100 g), 270 yd (247 m) balls

SHOP KIT

Around-Town Cardigan

You'll love the longer length, interesting
stitch pattern and unbelievable softness
of this crochet cardigan. From X-Small to
5X-Large, it adds effortless flair to your look.

**Directions are for size X-Small. Changes
for sizes Small, Medium/Large, X-Large,
2X-Large, 3X-Large, and 4X/5X-Large
are in parentheses.**

To Fit Bust: 30 (34, 38/42, 46, 50, 54,
58/62)" [76 (86.5, 96.5/106.5, 117, 127,
137, 147.5/157.5) cm]

Finished Bust: 32 (37½, 43½, 49½, 55,
60, 66)" [81.5 (95.5, 110.5, 125.5, 139.5,
152.5, 167.5) cm]

Finished Length: 26½ (26½, 27½, 27½,
28, 28½, 29)" [67.5 (67.5, 70, 70, 71, 72.5,
73.5) cm]

Notes

1. Cardigan is worked in 5 pieces: Back,
left front, right front, and two sleeves.
2. Do not worry if fronts appear narrow
as you work them. About 2" [5 cm]
of edging is worked along the front
edge of each front during finishing.
3. Designer recommends reading
through each row instruction before
beginning to avoid any confusion
during stitching.

Special Stitches

Bpdc (back post double crochet) =

Yarn over, insert hook from back side of
work to front and to back again around
the post of indicated stitch; yarn over
and pull up a loop (3 loops on hook),
[yarn over and draw through 2 loops on
hook] twice. Skip the stitch "in front of"
the Bpdc.

**dc2tog (double crochet 2 stitches
together) =** [Yarn over, insert hook in
next stitch, yarn over and pull up loop,
yarn over, draw through 2 loops] 2 times,
yarn over, draw through all 3 loops on
hook.

**Fdc (foundation double crochet - This
technique creates a foundation chain
and a row of double crochet stitches in
one) =**

First st: Place a slip knot on hook, ch
3, yarn over, insert hook in 3rd ch
from hook and draw up a loop, yarn
over, draw through 1 loop on hook (the
"chain"), [yarn over and draw through
2 loops on hook] twice (the "double
crochet").

Remaining sts: *Yarn over, insert hook
in "chain" of previous stitch and draw up
a loop, yarn over, draw through 1 loop
on hook (the "chain"), [yarn over and
draw through 2 loops on hook] twice
(the "double crochet"); repeat from * for
desired number of stitches.

Field stitch (worked over 4 stitches): Ch
1, skip next stitch, sc in next 2 stitches,
ch 1, skip next stitch.

Fpdc (Front post double crochet) =
Yarn over, insert hook from front side of
work to back and to front again around
post of indicated stitch, yarn over and
pull up a loop (3 loops on hook), [yarn
over and draw through 2 loops on hook]
twice. Skip the stitch "behind" the Fpdc.

Fptr (Front post treble crochet) = [Yarn
over] twice, insert hook from front
side of work to back and to front again
around post of the indicated stitch;
yarn over and pull up a loop (4 loops on
hook), [yarn over and draw through 2
loops] 3 times. Skip the stitch "behind"
the Fptr.

**Fptr-Cross (crossed front post treble
crochet stitches) =** Skip next 3 sts (these
will be a ch-1 space and the following 2
dc), Fptr around the dc in the row below
the next ch-1 space; working behind
the Fptr just made, dc in each of the 2
skipped dc, Fptr around the dc in the
row below the skipped ch-1 space.

continued...



2015 - 2018
WOMEN'S CHOICE AWARD®
AMERICA'S MOST RECOMMENDED
YARN BRAND



stacked-dc (stacked double crochet) = Ch 1, single crochet in indicated stitch or space, insert hook behind leftmost vertical bar of the single crochet just made and draw up a loop, yarn over and draw through 2 loops on hook. Note: Substitute a ch-3 beginning ch for stacked-dc if desired.

BACK

Lower Ribbing

Row 1 (wrong side): Fdc 81 (91, 101, 111, 121, 131, 141).

Row 2: Stacked-dc in first st, *Fpdc around next st, Bpdc around next st; repeat from * to last 2 sts, Fpdc around next st, dc in last st, turn.

Row 3: Stacked-dc in first st, *Bpdc around next st, Fpdc around next st; repeat from * to last 2 sts, Bpdc around next st, dc in last st, turn.

Row 4 (right side): Ch 1, sc in each st across, turn.

Row 5 (decrease row): Stacked-dc in first st, dc2tog, dc in each remaining st across, turn—80 (90, 100, 110, 120, 130, 140) sts.

Rows 6-10: Stacked-dc in first st, dc in each st across, turn.

Row 11 (Field stitch row): Ch 1, sc in first 8 (3, 8, 3, 8, 3, 8) sts, Field stitch, [sc in next 6 sts, Field stitch] 6 (8, 8, 10, 10, 12, 12) times, sc in each st across, turn—7 (9, 9, 11, 11, 13, 13) Field stitches.

Row 12 (Cross stitch row): Stacked-dc in first st, *dc in each st to next ch-1 space, Fptr-Cross; repeat from * until all ch-1 spaces have been worked into, dc in each st to end of row, turn—7 (9, 9, 11, 11, 13, 13) Fptr-Crosses.

Row 13 (decrease row): Stacked-dc in first st, dc2tog, dc in each st to last 3 sts, dc2tog, dc in last st, turn—78 (88, 98, 108, 118, 128, 138) sts.

Row 14: Stacked-dc in first st, dc in each st across, turn.

Rows 15-18: Repeat Rows 13 and 14 twice—74 (84, 94, 104, 114, 124, 134) sts.

Row 19 (Field stitch row): Ch 1, sc in first 10 (5, 10, 5, 10, 5, 10) sts, Field stitch, [sc in next 6 sts, Field stitch] 5 (7, 7, 9, 9, 11, 11) times, sc in each st across, turn—6 (8, 8, 10, 10, 12, 12) Field stitches.

Row 20 (Cross stitch row): Repeat Row 12—6 (8, 8, 10, 10, 12, 12) Fptr-Crosses.

Rows 21-26: Repeat Rows 13 and 14 three times—68 (78, 88, 98, 108, 118, 128) sts.

Row 27 (Field stitch row): Ch 1, sc in first 2 (7, 2, 7, 2, 7, 2) sts, Field stitch, [sc in next 6 sts, Field stitch] 6 (6, 8, 8, 10, 10, 12) times, sc in each st across, turn—7 (7, 9, 9, 11, 11, 13) Field stitches.

Row 28 (Cross stitch row): Repeat Row 12—7 (7, 9, 9, 11, 11, 13) Fptr-Crosses.

Rows 29-34: Repeat Rows 13 and 14 three times—62 (72, 82, 92, 102, 112, 122) sts.

Row 35 (Field stitch row): Ch 1, sc in first 4 (9, 4, 9, 4, 9, 4) sts, Field stitch, [sc in next 6 sts, Field stitch] 5 (5, 7, 7, 9, 9, 11) times, sc in each st across, turn—6 (6, 8, 8, 10, 10, 12) Field stitches.

Row 36 (Cross stitch row): Repeat Row 12—6 (6, 8, 8, 10, 10, 12) Fptr-Crosses.

Row 37: Repeat Row 13—60 (70, 80, 90, 100, 110, 120) sts. Place a marker in first and last st of Row 37 for sleeve placement.

Rows 38-42: Stacked-dc in first st, dc in each st across, turn.

Row 43 (Field stitch row): Ch 1, sc in first 8 (3, 8, 3, 8, 3, 8) sts, Field stitch, [sc in next 6 sts, Field stitch] 4 (6, 6, 8, 8, 10, 10) times, sc in each st across, turn—5 (7, 7, 9, 9, 11, 11) Field stitches.

Row 44 (Cross stitch row): Repeat Row 12—5 (7, 7, 9, 9, 11, 11) Fptr-Crosses.

Rows 45-50: Stacked-dc in first st, dc in each st across, turn.

Row 51 (Field stitch row): Ch 1, sc in first 3 (8, 3, 8, 3, 8, 3) sts, Field stitch, [sc in next 6 sts, Field stitch] 5 (5, 7, 7, 9, 9, 11) times, sc in each st across, turn—6 (6, 8, 8, 10, 10, 12) Field stitches.

Row 52 (Cross stitch row): Repeat Row 12—6 (6, 8, 8, 10, 10, 12) Fptr-Crosses.

Rows 53-58 (58, 60, 60, 58, 58, 58): Stacked-dc in first st, dc in each st across, turn.

Sizes 2X-Large (3X-Large, 4X/5X-Large) Only:

Row 59 (Field stitch row): Ch 1, sc in first 8 (3, 8) sts, Field stitch, [sc in next 6 sts, Field stitch] 8 (10, 10) times, sc in each st across, turn—9 (11, 11) Field stitches.

Row 60 (Cross stitch row): Repeat Row 12—9 (11, 11) Fptr-Crosses.

Next 1 (2, 3) Rows: Stacked-dc in first st, dc in each st across, turn.

All Sizes:
Fasten off.

LEFT FRONT

Lower Ribbing

Row 1 (wrong side): Fdc 31 (37, 41, 47, 51, 57, 61).

Row 2: Stacked-dc in first st, *Fpdc around next dc, Bpdc around next dc; repeat from * to last 2 sts, Fpdc around next st, dc in last st, turn.

Row 3: Stacked-dc in first st, *Bpdc around next dc, Fpdc around next dc; repeat from * to last 2 sts, Bpdc around next st, dc in last st, turn.

Row 4 (right side): Ch 1, sc in each st across, turn.

Sizes X-Small (Medium/Large, 2X-Large, 4X/5X-Large) Only:

Row 5 (decrease row): Stacked-dc in first st, dc2tog, dc in each st across, turn—30 (40, 50, 60) sts.

Sizes Small (X-Large, 3X-Large) Only:

Row 5 (decrease row): Stacked-dc in first st, dc2tog, dc in each st to last 3 sts, dc2tog, dc in last st, turn—35 (45, 55) sts.

All Sizes:

Rows 6-10: Stacked-dc in first st, dc in each st across, turn.

Row 11 (Field stitch row): Ch 1, sc in first 8 sts, Field stitch, [sc in next 6 sts, Field stitch] 1 (2, 2, 3, 3, 4, 4) time(s), sc in each st across, turn.

Row 12 (Cross stitch row): Stacked-dc in first st, *dc in each st to next ch-1 space, Fptr-Cross; repeat from * until all ch-1 spaces have been worked into, dc in each st to end of row, turn—2 (3, 3, 4, 4, 5, 5) Fptr-Crosses.

Row 13 (decrease row): Stacked-dc in first st, dc in each st to last 3 sts, dc2tog, dc in last st, turn—29 (34, 39, 44, 49, 54, 59) sts.

Row 14: Stacked-dc in first st, dc in each st across, turn.

Rows 15-18: Repeat Rows 13 and 14 twice—27 (32, 37, 42, 47, 52, 57) sts.

Row 19 (Field stitch row): Ch 1, sc in first 3 sts, Field stitch, [sc in next 6 sts, Field stitch] 1 (2, 2, 3, 3, 4, 4) time(s), sc in each st across, turn.

Row 20 (Cross stitch row): Repeat Row 12—2 (3, 3, 4, 4, 5, 5) Fptr-Crosses.

continued...



Rows 21–26: Repeat Rows 13 and 14 three times—24 (29, 34, 39, 44, 49, 54) sts.

Row 27 (Field stitch row): Ch 1, sc in first 8 sts, Field stitch, [sc in next 6 sts, Field stitch] 1 (1, 2, 2, 3, 3, 4) time(s), sc in each st across, turn.

Row 28 (Cross stitch row): Repeat Row 12—2 (2, 3, 3, 4, 4, 5) Fptr-Crosses.

Rows 29–34: Repeat Rows 13 and 14 three times—21 (26, 31, 36, 41, 46, 51) sts.

Row 35 (Field stitch row): Ch 1, sc in first 3 sts, Field stitch, [sc in next 6 sts, Field stitch] 1 (1, 2, 2, 3, 3, 4) time(s), sc in each st across, turn.

Row 36 (Cross stitch row): Repeat Row 12—2 (2, 3, 3, 4, 4, 5) Fptr-Crosses.

Row 37: Repeat Row 13—20 (25, 30, 35, 40, 45, 50) sts. Place a marker in last st of Row 37 for sleeve placement.

Rows 38–42: Stacked-dc in first st, dc in each st across, turn.

Shape Neck

Row 1 (Field stitch row - wrong side):

Ch 1, sc in first 8 sts, Field stitch, [sc in next 6 sts, Field stitch] 0 (1, 1, 2, 2, 3, 3) time(s), sc in each st across, turn—1 (2, 2, 3, 3, 4, 4) Field stitches.

Row 2 (Cross stitch row): Stacked-dc in first st, *dc in each st to next ch-1 space, Fptr-Cross; repeat from * across, turn—1 (2, 2, 3, 3, 4, 4) Fptr-Crosses.

Row 3 (decrease row): Stacked-dc in first st, dc2tog, dc in each st across, turn—19 (24, 29, 34, 39, 44, 49) sts.

Row 4: Stacked-dc in first st, dc in each st across, turn.

Rows 5–8: Repeat Rows 3 and 4 twice—17 (22, 27, 32, 37, 42, 47) sts.

Row 9 (Field stitch row): Ch 1, sc in first 10 sts, Field stitch, [sc in next 6 sts, Field stitch] 0 (0, 1, 1, 2, 2, 3) time(s), sc in each st across, turn—1 (1, 2, 2, 3, 3, 4) Field stitches.

Row 10 (Cross stitch row): Stacked-dc in first st, *dc in each st to next ch-1 space, Fptr-Cross; repeat from * until all ch-1 spaces have been worked into, dc in each st to end of row, turn—1 (1, 2, 2, 3, 3, 4) Fptr-Crosses.

Rows 11–14: Repeat Rows 3 and 4 twice—15 (20, 25, 30, 35, 40, 45) sts.

Rows 15–16 (16, 18, 18, 16, 16, 16): Stacked-dc in first st, dc in each st across, turn.

Sizes 2X-Large (3X-Large, 4X/5X-Large) Only:

Row 17 (Field stitch row): Ch 1, sc in first 3 sts, Field stitch, [sc in next 6 sts, Field stitch] 2 (3, 3) times, sc in each st across, turn—3 (4, 4) Field stitches.

Row 18 (Cross stitch row): Repeat Row 10—3 (4, 4) Fptr-Crosses.

Next 1 (2, 3) Rows: Stacked-dc in first st, dc in each st across, turn.

All Sizes:

Fasten off.

RIGHT FRONT Lower Ribbing

Row 1 (wrong side): Fdc 31 (37, 41, 47, 51, 57, 61).

Row 2: Stacked-dc in first st, *Fpdc around next dc, Bpdc around next dc; repeat from * to last 2 sts, Fpdc around next st, dc in last st, turn.

Row 3: Stacked-dc in first st, *Bpdc around next dc, Fpdc around next dc; repeat from * to last 2 sts, Bpdc around next st, dc in last st, turn.

Row 4 (right side): Ch 1, sc in each st across, turn.

Sizes X-Small (Medium/Large, 2X-Large, 4X/5X-Large) Only:

Row 5 (decrease row): Stacked-dc in first st, dc in each st to last 3 sts, dc2tog, dc in last st, turn—30 (40, 50, 60) sts.

Sizes Small (X-Large, 3X-Large) Only:

Row 5 (decrease row): Stacked-dc in first st, dc2tog, dc in each st to last 3 sts, dc2tog, dc in last st, turn—35 (45, 55) sts.

All Sizes:

Rows 6–10: Stacked-dc in first st, dc in each st across, turn.

Row 11 (Field stitch row): Ch 1, sc in first 8 (3, 8, 3, 8, 3, 8) sts, Field stitch, [sc in next 6 sts, Field stitch] 1 (2, 2, 3, 3, 4, 4) time(s), sc in each st across, turn—2 (3, 3, 4, 4, 5, 5) Field stitches.

Row 12 (Cross stitch row): Stacked-dc in first st, *dc in each st to next ch-1 space, Fptr-Cross; repeat from * until all ch-1 spaces have been worked into, dc in each st to end of row, turn—2 (3, 3, 4, 4, 5, 5) Fptr-Crosses.

Row 13 (decrease row): Stacked-dc in first st, dc2tog, dc in each st across, turn—29 (34, 39, 44, 49, 54, 59) sts.

Row 14: Stacked-dc in first st, dc in each st across, turn.

Rows 15–18: Repeat Rows 13 and 14 twice—27 (32, 37, 42, 47, 52, 57) sts.

Row 19 (Field stitch row): Ch 1, sc in first 10 (5, 10, 5, 10, 5, 10) sts, Field stitch, [sc in next 6 sts, Field stitch] 1 (2, 2, 3, 3, 4, 4) time(s), sc in each st across, turn—2 (3, 3, 4, 4, 5, 5) Field stitches.

Row 20 (Cross stitch row): Repeat Row 12—2 (3, 3, 4, 4, 5, 5) Fptr-Crosses.

Rows 21–26: Repeat Rows 13 and 14 three times—24 (29, 34, 39, 44, 49, 54) sts.

Row 27 (Field stitch row): Ch 1, sc in first 2 (7, 2, 7, 2, 7, 2) sts, Field stitch, [sc in next 6 sts, Field stitch] 1 (1, 2, 2, 3, 3, 4) time(s), sc in each st across, turn—2 (2, 3, 3, 4, 4, 5) Field stitches.

Row 28 (Cross stitch row): Repeat Row 12—2 (2, 3, 3, 4, 4, 5) Fptr-Crosses.

Rows 29–34: Repeat Rows 13 and 14 three times—21 (26, 31, 36, 41, 46, 51) sts.

Row 35 (Field stitch row): Ch 1, sc in first 4 (9, 4, 9, 4, 9, 4) sts, Field stitch, [sc in next 6 sts, Field stitch] 1 (1, 2, 2, 3, 3, 4) time(s), sc in each st across, turn—2 (2, 3, 3, 4, 4, 5) Field stitches.

Row 36 (Cross stitch row): Repeat Row 12—2 (2, 3, 3, 4, 4, 5) Fptr-Crosses.

Row 37: Repeat Row 13—20 (25, 30, 35, 40, 45, 50) sts. Place a marker in first st of Row 37 for sleeve placement.

Rows 38–42: Stacked-dc in first st, dc in each st across, turn.

Shape Neck

Row 1 (wrong side): Ch 1, sc in first 8 (3, 8, 3, 8, 3, 8) sts, Field stitch, [sc in next 6 sts, Field stitch] 0 (1, 1, 2, 2, 3, 3) time(s), sc in each st across, turn.

Row 2: Stacked-dc in first st, *dc in each st to next ch-1 space, Fptr-Cross; repeat from * across, turn—1 (2, 2, 3, 3, 4, 4) Fptr-Crosses.

Row 3 (decrease row): Stacked-dc in first st, dc in each st to last 3 sts, dc2tog, dc in last st, turn—19 (24, 29, 34, 39, 44, 49) sts.

Row 4: Stacked-dc in first st, dc in each st across, turn.

Rows 5–8: Repeat Rows 3 and 4 twice—17 (22, 27, 32, 37, 42, 47) sts.

Row 9 (Field stitch row): Ch 1, sc in first 3 (8, 3, 8, 3, 8, 3) sts, Field stitch, [sc in next 6 sts, Field stitch] 0 (0, 1, 1, 2, 2, 3) time(s), sc in each st across, turn—1 (1, 2, 2, 3, 3, 4) Field stitches.

continued...

Row 10 (Cross stitch row): Stacked-dc in first st, *dc in each st to next ch-1 space, Fptr-Cross; repeat from * until all ch-1 spaces have been worked into, dc in each st to end of row, turn—1 (1, 2, 2, 3, 3, 4) Fptr-Crosses.

Rows 11-14: Repeat Rows 3 and 4 twice—15 (20, 25, 30, 35, 40, 45) sts.

Rows 15-16 (16, 18, 18, 16, 16, 16):

Stacked-dc in first st, dc in each st across, turn.

Sizes 2X-Large (3X-Large, 4X/5X-Large) Only:

Row 17 (Field stitch row): Ch 1, sc in first 8 (3, 8) sts, Field stitch, [sc in next 6 sts, Field stitch] 2 (3, 3) times, sc in each st across, turn—3 (4, 4) Field stitches.

Row 18 (Cross stitch row): Repeat Row 10—3 (4, 4) Fptr-Crosses.

Next 1 (2, 3) Rows: Stacked-dc in first st, dc in each st across, turn.

All Sizes:

Fasten off.

SLEEVES (make 2)

Beginning at top of sleeve.

Row 1 (wrong side): Fdc 55 (55, 63, 63, 67, 69, 73), turn.

Rows 2 and 3: Stacked-dc in first st, dc in each st across, turn.

Rows 4-32 (decrease rows): Stacked-dc in first st, dc2tog, dc in each remaining st across, turn—26 (26, 34, 34, 38, 40, 44) sts.

Cuff Ribbing

Rows 33-35: Ch 2 (does not count as a st), Fpdc around first st, BPdc around next st, *Fpdc around next st, BPdc around next st; repeat from * across. Fasten off.

FINISHING

Block pieces to schematic measurements.

Sew shoulder seams. Sew top of sleeves between markers. Sew side and sleeve seams, pushing beginning ch-2 of sleeve cuffs to wrong side (inside) of sleeve. Remove sleeve placement markers.

Front Edging

Row 1 (wrong side): With wrong side facing, join yarn in lower left front corner, ch 1, work an odd number of sc sts evenly spaced up left front edge, across back neck, and down right front edge, turn. Note: For best results, work the same number of sc along left front edge and along right front edge.

Row 2: Stacked dc in first st, dc in each st across, turn.

Row 3: Stacked dc in first st, *Fpdc around next st, Bpdc around next st; repeat from * to last 2 sts, Fpdc around next st, dc in last st, turn.

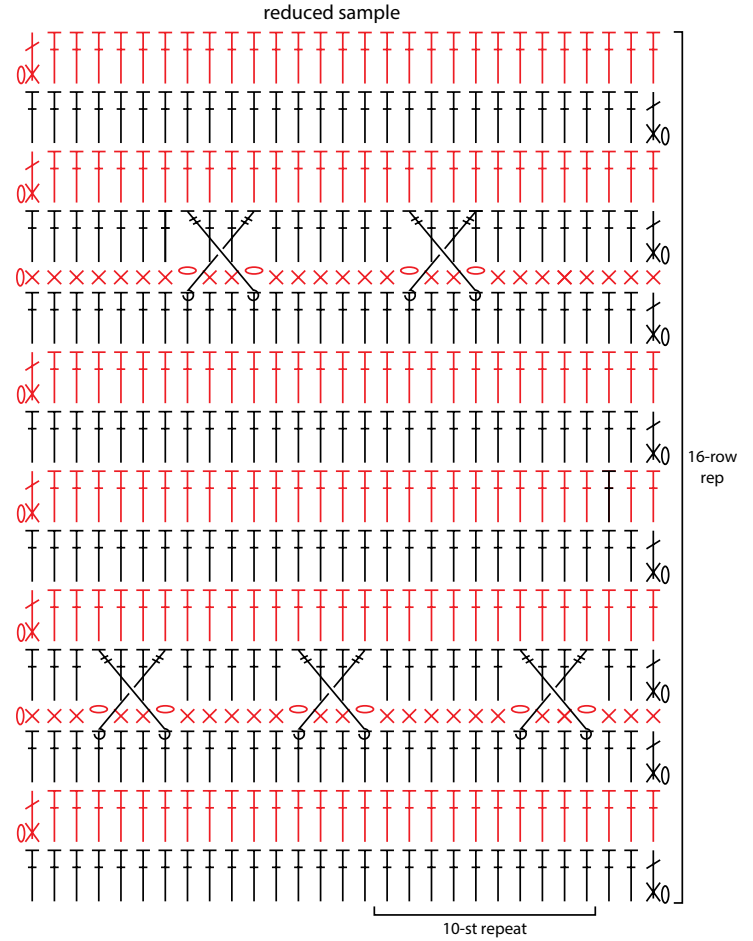
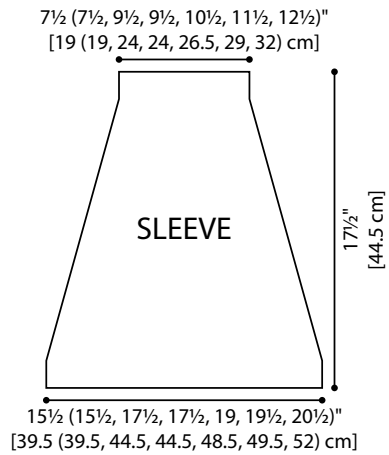
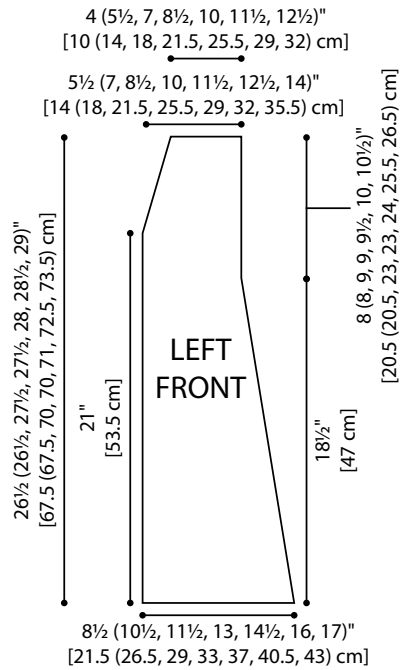
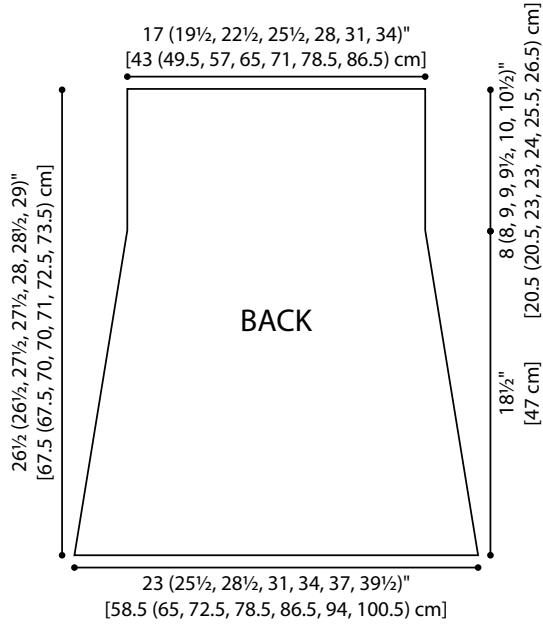
Row 4: Stacked dc in first st, *Bpdc around next st, Fpdc around next st; repeat from * to last 2 sts, Bpdc around next st, dc in last st, turn. Fasten off.

Weave in ends.

ABBREVIATIONS

ch = chain; **dc** = double crochet; **sc** = single crochet; **st(s)** = stitch(es); **()** = work directions in parentheses into same st; **[]** = work directions in brackets the number of times specified; ***** = repeat whatever follows the * as indicated.





KEY

- = chain (ch)
- × = single crochet (sc)
- ┆ = double crochet (dc)
- × × ○ = Field stitch (worked over 4 sts)
- ┆ / \ / = crossed front post treble crochet sts (Fptr-Cross)
- ┆ / \ / = stacked double crochet (stacked-dc)