



AN ITALIAN STORY

Vera™



ABBRACCIO SWEATER

KNITTING



WHAT YOU NEED

RED HEART® Vera™: 5 (6, 7, 7, 8) balls 2312 Nero **A**, and 4 (5, 5, 6, 7) balls 2311 Latte **B**

Susan Bates® Knitting Needles:

5.5mm [US 9] and 6mm [US 10]

5.5mm [US 9] set of double-pointed needles

Stitch holder, yarn needle.

GAUGE: 20 sts = about 4" [10 cm]; 20 rows = about 4" [10 cm] in Two-Color Shell pattern using larger needles. **CHECK YOUR GAUGE. Use any size needles to obtain the gauge.**

BUY YARN



RED HEART® Vera™: Art R181 available in 3.5 oz (100 g) 135 yds (123 m) balls



Designed by Italian Story Design Team

Directions are for size **Small**. Changes for sizes **Medium**, **Large**, **X-Large**, and **2X-Large** are in parentheses.

Finished Bust: 36 (41, 44, 47, 52)" [91.5 (104, 112, 119.5, 132) cm]

Finished Length: 23½ (24, 24½, 25, 25½)" [59.5 (61, 62, 63.5, 65) cm], not including turtleneck

Notes

1. Sweater is made in four pieces: Back, front, and two sleeves.
2. All pieces are worked from the lower edge upwards.
3. Turtleneck is worked directly onto neck edge after pieces are seamed.
4. Two-Color Shell pattern can be worked by following the written instructions or reading the chart. Read right side rows of chart from right to left and wrong side rows from left to right.

Special Stitches

M1 (make 1 knit) = Lift strand between needles to left-hand needle and knit strand through the back loop, twisting it to prevent a hole - 1 st increased.

shell = Knit next 3 stitches together but do not remove stitches from needle, purl same 3 stitches together but do not remove stitches from needle, knit same 3 stitches together and remove stitches from left needle.

PATTERN STITCHES

2x2 Rib (multiple of 4 sts + 2)

Row 1 (right side): K2, *p2, k2; repeat from * across.

Row 2: K the knits st and p the purl sts, as they appear.

Repeat Rows 1 and 2 for 2x2 Rib.

Two-Color Shell pattern (multiple of 4 sts + 2)

Row 1 (right side): With **A**, slip 1 (selvedge), k1, *work shell over next 3 sts, k1; repeat from * across.

Row 2: With **A**, slip 1, purl across.

Row 3: With **B**, slip 1, k3, *work shell over next 3 sts, k1; repeat from * to last 2 sts, k2.

Row 4: With **B**, slip 1, purl across.

Repeat Rows 1-4 for Two-Color Shell pattern.

continued...



FRONT

With smaller straight needles and **A**, cast on 90 (102, 110, 118, 130) sts.

Beginning with a right side row, work in 2x2 Rib for 12 rows.

Change to larger needles.

Work in Two-Color Shell pattern until piece measures about 16½" [42 cm] from beginning.

Shape Armholes

Note: To work in pattern "as established" work the next row of the pattern, taking care to line up stitches as in previous rows.

Next 2 Rows: Bind off 3 (6, 8, 10, 14) sts, work in Two-Color Shell pattern as established to end of row—84 (90, 94, 98, 102) sts. Continue in Two-Color Shell pattern as established until armholes measure about 4½ (5, 5½, 6, 6½)" [11.5 (12.5, 14, 15, 16.5) cm] ending with a wrong side row.

Divide for Neck

Row 1 (right side): Work in pattern as established over first 33 (35, 36, 37, 38) sts for left front and place these sts on a holder, bind off next 18 (20, 22, 24, 26) sts, work in pattern as established to end of row—33 (35, 36, 37, 38) sts remain on needle for right front.

Right Front

Row 2 (wrong side): Work even in pattern as established.

Row 3: Bind off 6 sts, work in pattern as established across—27 (29, 30, 31, 32) sts.

Row 4: Work even in pattern as established.

Row 5: Bind off 4 sts, work in pattern as established across—23 (25, 26, 27, 28) sts.

Row 6: Work even in pattern as established.

Row 7: Bind off 1 st, work in pattern as established across—22 (24, 25, 26, 27) sts.

Continue even in pattern as established until right armhole measures about 7 (7½, 8, 8½, 9)" [18 (19, 20.5, 21.5, 23) cm], end with a Row 2 or Row 4 of pattern.

Bind off.

Left Front

Return left front stitches to needle, so that you are ready to work a wrong side row.

Row 2 (wrong side): Bind off 6 sts, work in pattern as established across—27 (29, 30, 31, 32) sts.

Row 3: Work even in pattern as established.

Row 4: Bind off 4 sts, work in pattern as established across—23 (25, 26, 27, 28) sts.

Row 5: Work even in pattern as established.

Row 6: Bind off 1 st, work in pattern as established across—22 (24, 25, 26, 27) sts.

Continue even in pattern as established until left armhole measures about 7 (7½, 8, 8½, 9)" [18 (19, 20.5, 21.5, 23) cm] ending with a Row 2 or Row 4 of pattern.

Bind off.

BACK

With smaller straight needles and **A**, cast on 90 (102, 110, 118, 130) sts.

Beginning with a right side row, work in 2x2 Rib for 12 rows.

Change to larger needles.

Work in Two-Color Shell pattern until piece measures about 16½" [42 cm] from beginning.

Shape Armholes

Next 2 Rows: Bind off 3 (6, 8, 10, 14) sts, work in Two-Color Shell pattern as established to end of row—84 (90, 94, 98, 102) sts. Continue in Two-Color Shell pattern as established until armholes measure about 6 (6½, 7, 7½, 8)" [15 (16.5, 18, 19, 20.5) cm] ending with a wrong side row.

Divide for Neck

Row 1 (right side): Work in pattern as established over first 24 (26, 27, 28, 29) sts right side of neck and place these sts on a holder, bind off next 36 (38, 40, 42, 44) sts, work in pattern as established across—24 (26, 27, 28, 29) sts remain on needle for left side of neck.

Left Side

Row 2 (wrong side): Work even in pattern as established.

Row 3: Bind off 1 st, work in pattern as established across—23 (25, 26, 27, 28) sts.

Repeat Rows 2 and 3—22 (24, 25, 26, 27) sts.

Continue even in pattern as established until armhole measures same as front armhole, ending with a Row 2 or Row 4 of pattern. Bind off.

Right Side

Return right side stitches to needle, so that you are ready to work a wrong side row.

Row 2 (wrong side): Bind off 1 st, work in pattern as established across—23 (25, 26, 27, 28) sts.

Row 3: Work even in pattern as established.

Repeat Rows 2 and 3—22 (24, 25, 26, 27) sts.

Continue even in pattern as established until armhole measures same as front armhole, ending with a Row 2 or Row 4 of pattern. Bind off.

continued...



SLEEVES (make 2)

With smaller straight needles and **A**, cast on 38 (42, 46, 50, 54) sts. Beginning with a right side row, work in 2x2 Rib for 12 rows.

Change to larger needles.

Rows 1–3: Work Rows 1–3 of Two-Color Shell pattern.

Row 4 (Increase Row): Slip 1, M1, work in Two-Color Shell pattern as established to last st, M1, p1—40 (44, 48, 52, 56) sts.

Rows 5–7: Slip 1, work in Two-Color Shell pattern as established (working new stitches into pattern) for 3 rows.

Row 8: Slip 1, M1, work in Two-Color Shell pattern as established to last st, M1, work last st in pattern—42 (46, 50, 54, 58) sts.

Repeat Rows 5–8 for 16 (17, 17, 18, 18) more times—74 (80, 84, 90, 94) sts.

Continue even in Two-Color Shell pattern until piece measures about 20 (20½, 21, 21½, 22)" [51 (52, 53.5, 54.5, 56) cm] from beginning.

Next 2 Rows: Bind off 3 (6, 8, 10, 14) sts, work in Two-Color Shell pattern as established to end of row—68 (68, 68, 70, 66) sts.

Continue even in Two-Color Shell pattern for about ½" [1.5 cm]. Bind off.



FINISHING

Sew shoulder seams. Sew tops of sleeves into armholes. Sew side and sleeve seams.

Turtleneck

With right side facing and double-pointed needles, beginning at center back neck, pick up and k112 (116, 120, 124, 128) sts evenly spaced around neck edge. Divide stitches evenly over needles. Place a marker for beginning of round and prepare to work in rounds.

Rounds 1–18: *K2, p2; repeat from * around.

Place a marker in 4th (4th, 4th, 5th, 5th) k2-rib, 10th (10th, 10th, 12th, 12th) k2-rib, 19th (20th, 21st, 20th, 21st) k2-rib, and 25th (26th, 27th, 27th, 28th) k2-rib.

Round 19: *Work in pattern as established to next marker, work k2tog or p2tog (whichever best maintains the ribbing pattern); repeat from * 3 more times, work in pattern as established to end of row—108 (112, 116, 120, 124) sts.

Rounds 20–26: Repeat Round 19 for 7 more times—80 (84, 88, 92, 96) sts.

Bind off in pattern.

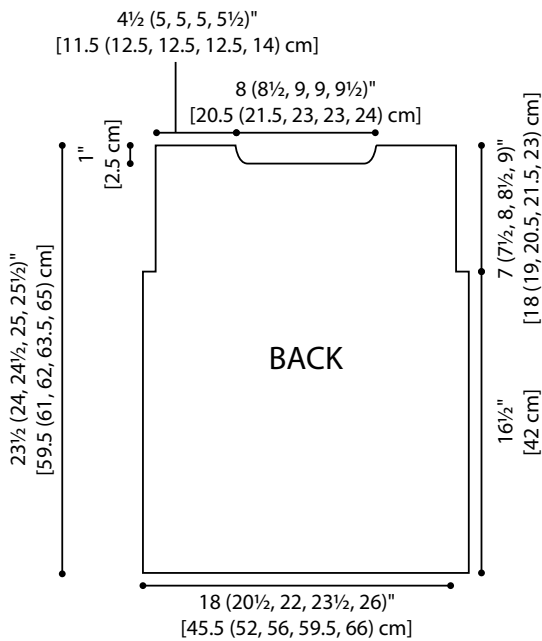
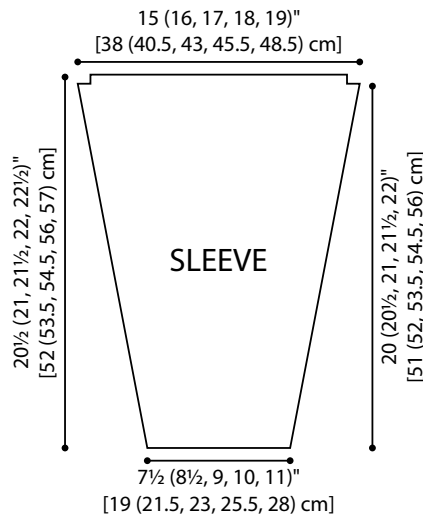
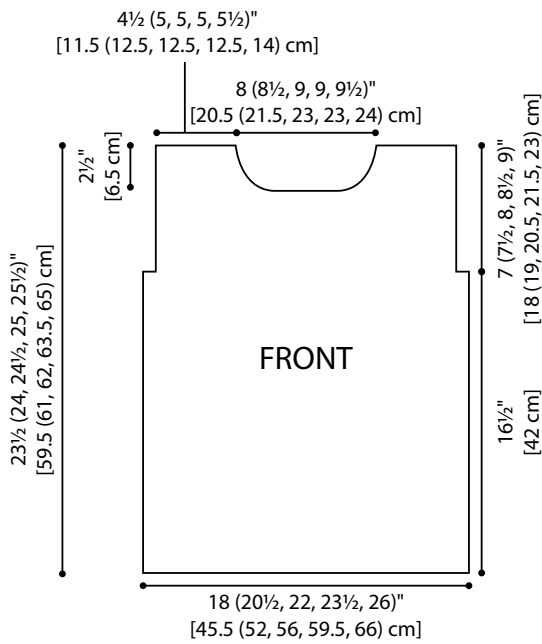
Weave in ends.



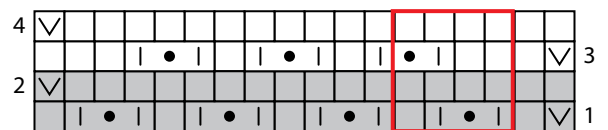
ABBREVIATIONS

A and B = Color A and Color B; **k** = knit; **k2tog** = knit next 2 sts together; **p** = purl; **p2tog** = purl next 2 sts together; **st(s)** = stitch(es); **[]** = work directions in brackets the number of times specified; ***** = repeat whatever follows the * as indicated.

see chart and schematic on next page



Two-Color Shell pattern



KEY

- knit on right side, purl on wrong side
- purl on right side, knit on wrong side
- slip 1
- | • | shell (k3tog, p3tog, k3tog all over same 3 sts)
- repeat