



MATERIALS

Caron® x Pantone™ (3.5 oz/100 g; 127 yds/116 m)

Main Color (MC) Mushroom Greige (01002) **2 braids**

Contrast 1 (A, B, C, D, E) Spicy Blooms (01014) **3 braids**

Contrast 2 (F, G, H, I, J) Purple Pops (01017) **4 braids**

Contrast 3 (K, L, M, N, O) Provincial Lilac (01013) **4 braids**

Size U.S. J/10 (6 mm) crochet hook **or size needed to obtain gauge.**

MC - 16-0906

A - 17-1452 B - 17-1462 C - 17-1723 D - 18-1561 E - 18-2436

F - 13-3406 G - 16-3307 H - 18-3838 I - 16-0737 J - 19-4324

K - 11-4302 L - 14-4203 M - 15-3912 N - 16-1412 O - 18-1404



CROCHET | SKILL LEVEL: **EASY**

ABBREVIATIONS

Approx = Approximately

Ch = Chain(s)

Cont = Continue(ity)

Dc = Double crochet

Hdc = Half double crochet

Rep = Repeat

RS = Right side

Sc = Single crochet

Sc2tog = Draw up a loop in each of next 2 stitches. Yoh and draw through all loops on hook.

Sc2togbl = Draw up a loop in each of next 2 stitches in back loops only. Yoh and draw through all loops on hook.

Scfl = Single crochet in front loop only of next stitch

Scbl = Single crochet in back loop only of next stitch.

Sl st = Slip stitch

Sp(s) = Space(s)

St(s) = Stitch(es)

Tog = Together

WS = Wrong side

Yoh = Yarn over hook

MEASUREMENTS

Approx 21" x 80" [53.5 x 203 cm].

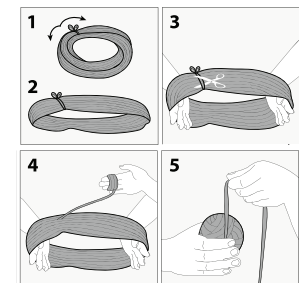
GAUGE

12 sc and 14 rows = 4" [10 cm].

INSTRUCTIONS

Notes:

- Before working with Caron X Pantone multi-shade yarn braid, separate each color link and wind into 5 separate balls.



- Each color link will be referenced by its Pantone # (see label).
- Designate each different shade of the 5 separate yarn balls as Contrast A, B, C, etc as noted in Materials section (or as desired).
- Due to finite amount of yarn in each shade, pattern gauge must be matched to ensure successful results.
- Worked over foundation ch multiple of 20 ch.
- When joining colors, work to last 2 loops on hook of first color. Draw new color through last 2 loops and proceed.

Version 1 Stripe Pat

With A, work 4 rows.
 With B, work 4 rows.
 With M, work 2 rows.
 With C, work 4 rows.
 With D, work 4 rows.
 With O, work 2 rows.
 With E, work 4 rows.
 With F, work 2 rows.
 With N, work 2 rows.
 With F, work 2 rows.
 With G, work 4 rows.
 With H, work 4 rows.
 With K, work 2 rows.

With L, work 2 rows.
 With I, work 4 rows.
 With J, work 2 rows.
 With MC, work 2 rows.
 With J, work 2 rows.
 With MC, work 2 rows.
 With K, work 2 rows.
 With L, work 2 rows.
 With M, work 2 rows.
 With N, work 2 rows.
 With O, work 2 rows.
 Rep last 64 rows once more.
 These 128 rows form Stripe Pat.

Chevron Pat

With MC, ch 139. Break MC. With A, ch 1 to form 140th ch. Total of 140 ch. See diagram on page 3. Cont with A as follows:
1st row: (RS). With A, 1 sc in 2nd ch from hook. 1 sc in each of next 8 ch. 5 sc in next ch. 1 sc in each of next 8 ch. *Skip next 3 ch. 1 sc in each of next 8 ch. 5 sc in next ch. 1 sc in each of next 8 ch. Rep from * to last ch. 1 sc in last ch. Turn.
2nd row: Ch 2 (counts as 1 hdc). Skip next 2 sc. 1 scbl in each of next 8 sc. 5 scbl in next sc. 1 scbl in each of next 8 sc. *Skip next 4 sc. 1 scbl in each of next 8 sc. 5 scbl in next sc. 1 scbl in each of next 8 sc.

Rep from * to last 3 sts. Skip next 2 sc. 1 hdc in last st. Turn.
 First 2 rows of Stripe Pat are complete.
 Keeping cont of Stripe Pat, rep 2nd row 126 times more. Fasten off.

FINISHING

Fill Valleys Along Last Row:

With RS facing, join MC with sl st through back loop of 4th st in 5-scbl cluster at first chevron peak (see diagram on page 3).

1st row: (RS). Ch 1. Skip first ch where MC was joined. 1 scbl in each of next 7 sc. Skip next 4 sc. 1 scbl in each of next 6 sc. Sc2togbl. Turn.

****2nd row:** Ch 1. Skip first st. 1 scbl in each of next 4 sc. Skip next 4 sc. 1 scbl in each of next 3 sc. Sc2togbl. Turn.

3rd row: Ch 1. Skip first st. 1 scbl in next sc. Skip next 4 sc. 1 scbl in next sc. Skip next sc. Ch 1. Sl st in first ch of 2nd row. Fasten off.**

Rep for all 6 Valleys along last row.

Fill Valleys Along First Row:

With RS facing, join MC with sl st through 2nd ch at first chevron peak (see diagram).

1st row: (RS). Ch 1. Skip first ch where MC was joined. 1 sc in each of next 7 ch. Skip next 3 ch. 1 sc in each of next 6 sc. Sc2tog. Turn.

Work from ** to ** as given for Fill Valleys Along Last Row.

Rep for all 7 Valleys along first row.

Square 1st Corner of Last Row:

With WS facing, join MC with sl st through front loop only of 4th sc at last chevron peak (see diagram).

1st row: (RS). Ch 1 (counts as 1 sc). 1 scfl in each of next 7 sc. Skip next 2 sc. 1 hdc in last st. Turn.

2nd row: Ch 2 (counts as 1 hdc). Skip next 2 sc. 1 scbl in each of next 3 sc. Sc2togbl. Turn.

3rd row: Ch 1 (counts as 1 sc). 1 scbl in next sc. Skip next 2 sc. 1 dc in last st. Fasten off.

Square 2nd Corner of Last Row:

With RS facing, join MC with sl st through 4th sc at last chevron peak (see diagram).

1st row: (RS). Ch 1 (counts as 1 sc). 1 scbl in each of next 7 sc. Skip next 2 sc. 1 hdc in last st. Turn.

2nd row: Ch 2 (counts as 1 hdc). Skip next 2 sc. 1 scbl in each of next 3 sc. Sc2togbl. Turn.

3rd row: Ch 1 (counts as 1 sc).
1 scbl in next sc. Skip next 2 sc.
1 dc in last st. Fasten off.

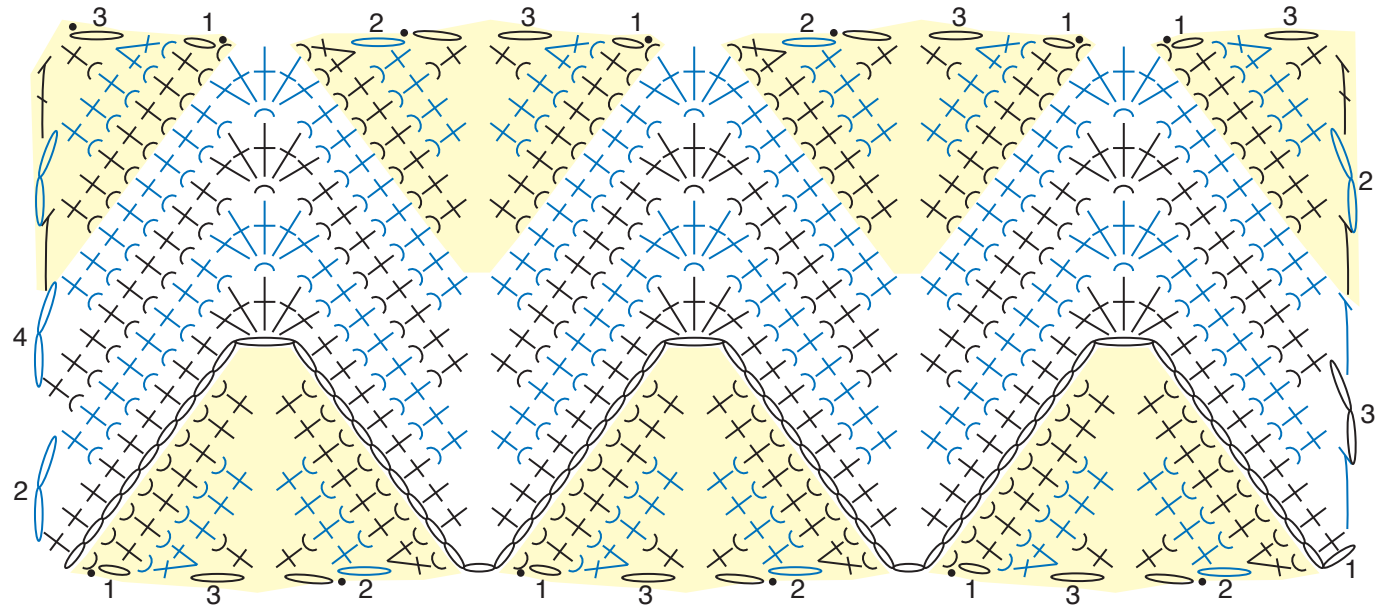
Edging:

1st rnd: (RS). Join MC with sl st at corner. Work sc evenly around working (1 sc. Ch 2. 1 sc) in each corner. Join with sl st to first sc.

2nd rnd: Ch 1. 1 sc in each sc around, working (2 sc. Ch 2. 2 sc) in each corner ch-2 sp. Join with sl st to first sc. Fasten off.

STITCH KEY

- = chain (ch)
- = slip stitch (sl st)
- ⊥ = single crochet (sc)
- ┃ = half double crochet (hdc)
- ┃ = double crochet (dc)
- △ = single crochet 2 together (sc2tog)
- ◡ = worked in back loop only



REDUCED SAMPLE OF PATTERN