



CROCHET  
SKILL LEVEL  
EASY

Designed by Randy Cavaliere



## What you will need:

**RED HEART® Soft Baby Steps®:**  
2 balls each of 9401 Elephant **A**  
and 9505 Aqua **B**; 1 ball each of  
9600 White **C**, 9620 Baby Green **D**,  
and 9800 Baby Blue **E**.

**Susan Bates® Crochet Hook:**  
6.5 mm [US K-10.5]

Yarn needle

**GAUGE:** 6 pattern repeats = 4"  
(10 cm); 10 rows in pattern = 4½"  
(11.5 cm). **Note:** A pattern repeat  
consists of (dc, ch 1, dc).



**Baby Steps®**, Art. E746  
available in solid color  
5 oz (141 g), 256 yd  
(234 m); prints 4 oz (113 g), 204 yd  
(187 m) balls

SHOP KIT

# Cuddle Me Blanket

*We've used 5 harmonious shades of this soft comforting baby yarn for the perfect baby blanket. It's easy to crochet, keeps baby happy, and will wash and dry by machine!*

**Blanket measures 35" (89 cm) wide x 40½" long (103 cm).**

## Special Stitches

**single crochet 3 together (sc3tog) =**

[Insert hook in next stitch or space, yarn over and pull up a loop] 3 times, yarn over and draw through all 4 loops on hook.

**beg edge sc3tog =** Insert hook in first space, yarn over and pull up a loop, [insert hook in next space, yarn over and pull up a loop] 2 times, yarn over and draw through all 4 loops on hook.

**edge sc3tog =** Insert hook in last space of previous stitch, yarn over and pull up a loop, [insert hook in next space, yarn over and pull up a loop] 2 times, yarn over and draw through all 4 loops on hook.

## Notes

- Each color is worked in 2 rows and fastened off. Join the next color in the first stitch on the same side as last row and repeat the 2-row sequence.
- In rows, work sc3tog over a double crochet, next ch-1 space, and next double crochet. Edge sc3tog are worked over ends of rows.

## THROW

With **A**, ch 154.

**Row 1 (right side):** Working in back bars only, dc in 6th ch from hook (beginning ch counts as 2 skipped ch and first dc), ch 1, dc in first skipped ch, \*skip next 2 ch, dc in next ch, ch 1, working in front of dc just made, dc in first skipped ch; repeat from \* across to last 2 ch, skip next ch, dc in last ch, turn—102 dc and 50 ch-1 spaces.

**Row 2:** Ch 1, sc in first dc, \*ch 2, sc3tog over next (dc, ch-1 space, dc); repeat from \* across to beginning ch, ch 2, skip next ch, sc in top of beginning ch—52 sc and 51 ch-2 spaces. Fasten off. Do not turn.

**Row 3:** With right side facing, join **B** with slip st in first sc, ch 3 (counts as first dc here and throughout), skip first ch-2 space, dc in next ch-2 space, ch 1, working in front of dc just made, dc in last skipped ch-2 space, \*dc in next ch-2 space, ch 1, working in front of dc just made, dc in last ch-2 space previously worked; repeat from \* across, dc in last sc, turn—102 dc and 50 ch-1 spaces.

**Row 4:** Ch 1, sc in first dc, \*ch 2, c3tog over next (dc, ch-1 space, dc); repeat from \* across to last dc, ch 2, sc in top of beginning ch-3—52 sc and 51 ch-2 spaces. Fasten off. Do not turn.

**Repeat Rows 3 and 4 and change color in the following color sequence:** Work 2 rows with **C**, 2 rows with **D**, 2 rows with **E**, [2 rows with **A**, 2 rows with **B**, 2 rows with **C**, 2 rows with **D**, 2 rows with **E**] 3 times, 2 rows with **A**, 2 rows with **B**, 2 rows with **C**, 2 rows with **B**, 2 rows with **A**, [2 rows with **E**, 2 rows with **D**, 2 rows with **C**, 2 rows with **B**, 2 rows with **A**] 4 times, turn. Do not fasten off.

Continued...



2015  
**WOMEN'S CHOICE AWARD™**  
AMERICA'S MOST RECOMMENDED  
YARN BRAND

## Edging

**Note:** Each pair of rows has a dc (or ch-3) and a sc row-end. Work two “legs” of edge sc3tog into side of dc, and one leg in side of sc row-end.

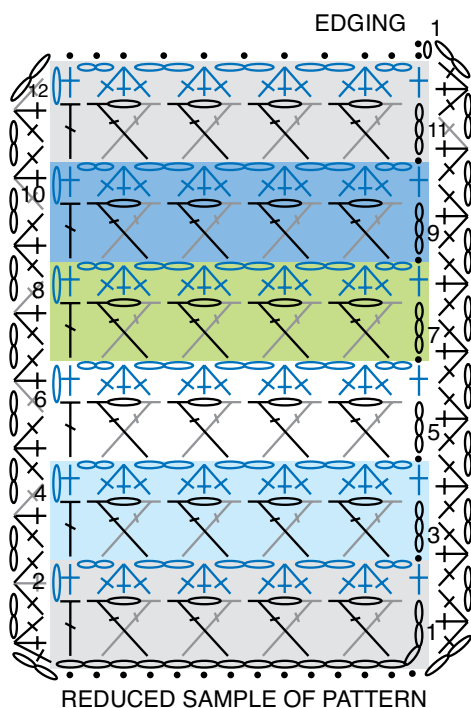
**Round 1:** Ch 1, slip st in each sc and ch-2 space across; working in ends of rows of first side, \*ch 2, beg edge sc3tog, (ch 2, edge sc3tog) across\*, working in opposite side of foundation ch, slip st in first ch, \*\*slip st in next ch, slip st in next ch-1 space; repeat from \*\* across, to last 2 ch, slip st in each of last 2 ch sts; working in ends of rows of other side, repeat from \* to \* once; join with slip st in first slip st. Fasten off.

## FINISHING

Weave in ends. Block to finished measurements.

## ABBREVIATIONS

**ch** = chain; **dc** = double crochet; **sc** = single crochet; **sp(s)** = space(s); **st(s)** = stitch(es);  
( ) = work directions in parentheses into same st; \* = repeat whatever follows the \* as indicated.



### STITCH KEY

- = chain (ch)
- = slip st (sl st)
- = single crochet (sc)
- = double crochet (dc)
- = single crochet 3 together (sc3tog)

