



MATERIALS

Red Heart® Super Saver® (7 oz/198 g; 364 yds/333 m)

Dusty Gray (0340)

1 ball or 65 yds/60 m

Note: 1 ball of Red Heart® Super Saver™ will make approx 5 Masks.

Size U.S. 7 (4.5 mm) knitting needles **or size needed to obtain gauge.** 11" x 12" [28 x 30.5 cm] piece of lining fabric (heavyweight quilter's cotton, flannel or high thread count bedding recommended). Pins. Coats & Clark Dual Duty XP® All-purpose Thread. Sewing needle.

Alternate Versions: Ribbon Ties Version: 72" [1.8 m] of ¼" [6 mm] wide ribbon; Elastic Ear Loops Version: 12" [30.5 cm] of ¼" [6 mm] wide elastic.



KNIT 1 SKILL LEVEL: **EASY**

ABBREVIATIONS

Approx = Approximately

Beg = Beginning

Cont = Continue(ity)

K = Knit

K2tog = Knit next 2 stitches together

Kfb = Increase 1 stitch by knitting into front and back of next stitch

P = Purl

P2tog = Purl next 2 stitches together

Pat = Pattern

Rep = Repeat

RS = Right side

St(s) = Stitch(es)

Ssk = Slip next 2 stitches knitwise one at a time. Pass them back onto left-hand needle, then knit through back loops together

WS = Wrong side

SIZE

One size to fit Adult.

GAUGE

18 sts and 32 rows = 4" [10 cm] in Seed St Pat.

INSTRUCTIONS

Cast on 16 sts.

1st row: (RS). *K1. P1. Rep from * to end of row.

Rep last row (K1. P1) ribbing for 1" [2.5 cm], ending on a WS row.

Cont as follows:

1st row: (RS). Kfb. *K1. P1. Rep from * to last st. Kfb. 18 sts.

2nd row: *P1. K1. Rep from * to end of row.

3rd row: *K1. P1. Rep from * to end of row.

Last 2 rows form Seed St Pat.

Keeping cont of Seed St Pat, proceed as follows:

4th row: Work even in pat.

5th row: Kfb. *P1. K1. Rep from * to last st. Kfb. 20 sts.

6th to 8th rows: Work even in pat.

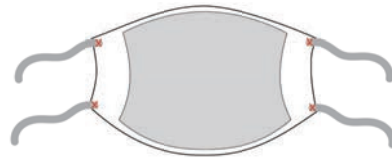
9th row: Kfb. *K1. P1. Rep from * to last st. Kfb. 22 sts.

10th to 16th rows: Work even in pat.
17th row: As 5th row. 24 sts.
18th to 24th rows: Work even in pat.
25th row: As 9th row. 26 sts.
26th row: Work even in pat.
27th row: ssk. Pat to last 2 sts. K2tog. 24 sts.
28th to 34th rows: Work even in pat.
35th row: ssk. Pat to last 2 sts. P2tog. 22 sts.
36th to 42nd rows: Work even in pat.
43rd row: As 27th row. 20 sts.
44th to 46th rows: Work even in pat.
47th row: As 35th row. 18 sts.
48th to 50th rows: Work even in pat.
51st row: As 27th row. 16 sts.

Proceed in (P1. K1) ribbing until ribbing measures 1" [2.5 cm]. Cast off in ribbing.

Knit Ties (make 4):

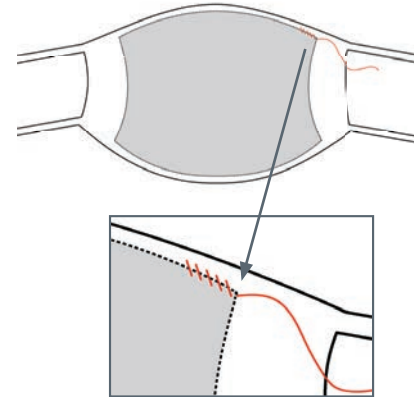
Cast on 80 sts. Cast off. Sew securely to each corner on WS of Mask.



Alternate Ribbon Ties or Elastic Ear Loop Versions (see right).

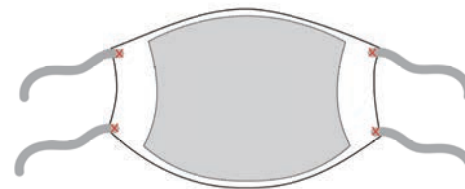
ASSEMBLY

Cut Lining Template out (see page 3 - print at 100% scale). Alternatively, draw onto paper using template as guide, noting each square represents 1" [2.5 cm] square. Trace onto Lining Fabric and cut out 2 pieces. Stack Lining pieces and turn under ¼" [6 mm] along perimeter to WS. Center WS of fabric on WS of Mask and pin into position. With sewing needle and all-purpose thread, whipstitch fabric to Mask.

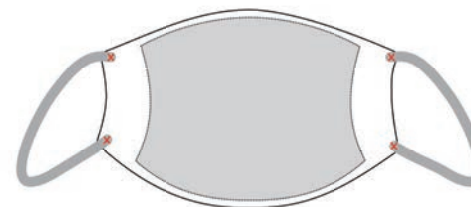


Alternate Versions:

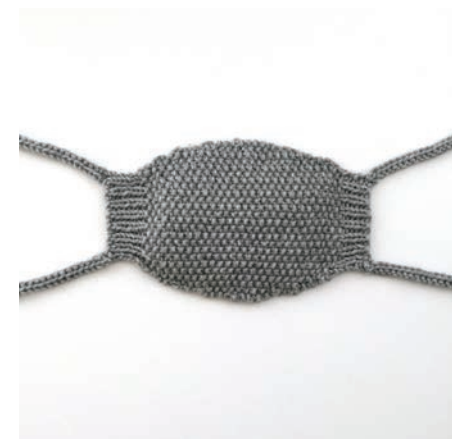
Ribbon Ties: Sew 18" [45.5 cm] length of ribbon securely to each corner on WS of Mask.



Elastic Ear Loops: Sew ends of 6" [15 cm] length of elastic securely to each corner on WS of Mask.

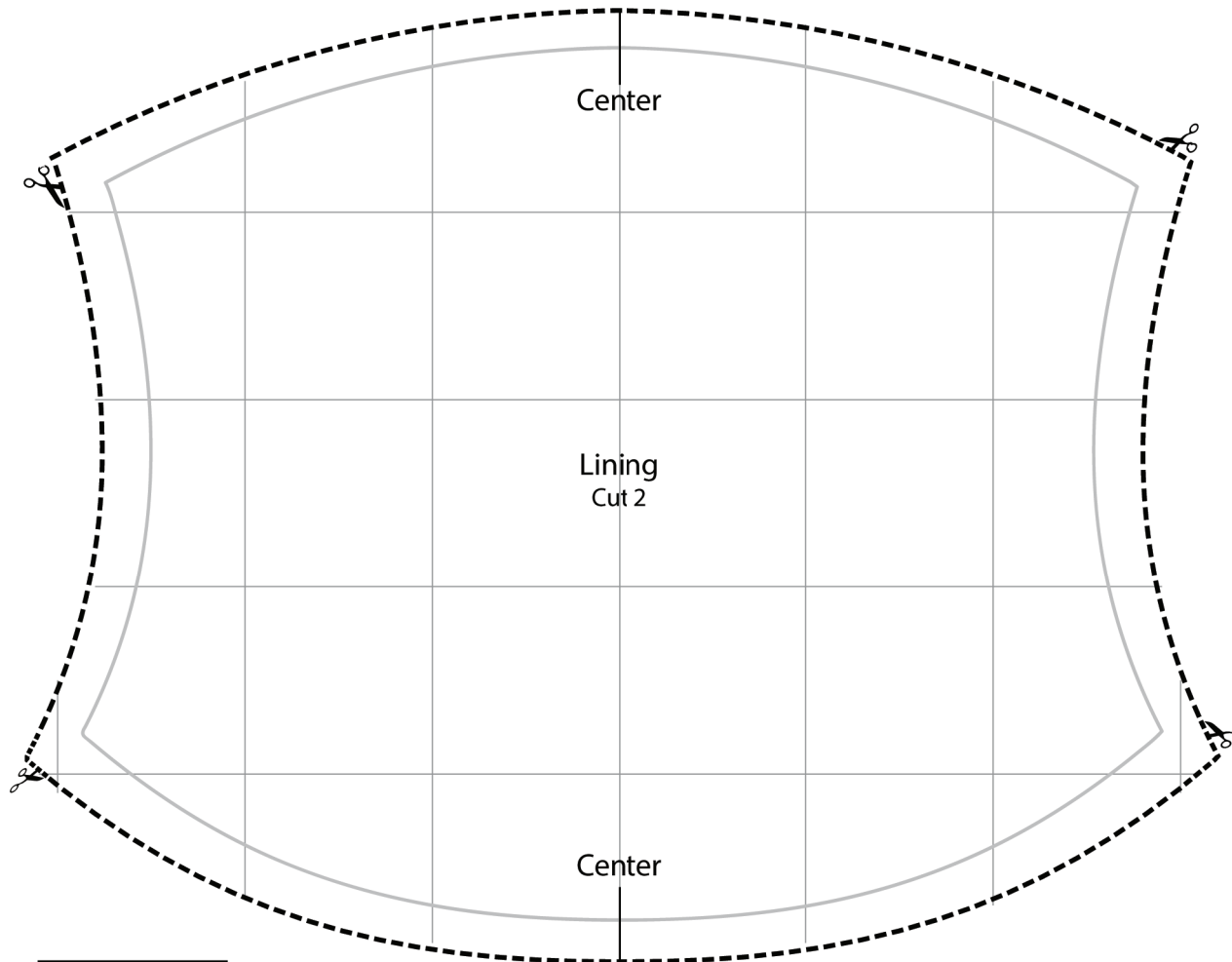


Front



Back





This square
should measure
1" x 1"
[2.5 x 2.5 cm]
when printed.