

SUGAR BUSH POLAR BERRY KNIT PULLOVER | KNIT



 KNIT | SKILL LEVEL: **EXPERIENCED**

ABBREVIATIONS

Approx = Approximate(ly)

Beg = Begin(ing)

Cont = Continue

Dec = Decreas(e)(ing)

Inc = Inceas(e)(ing)

K = Knit

P = Purl

Pat = Pattern

PM = Place marker

Rem = Remain(ing)

Rep = Repeat

Rnd(s) = Round(s)

RS = Right side

Sl1P = Slip next stitch purlwise

Sl1wyib = Slip next stitch knitwise with yarn in back of work

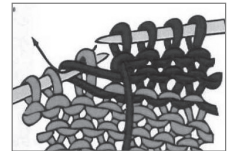
Sl1wyif = Slip next stitch knitwise with yarn in front of work

St(s) = Stitch(es)

Tw2L = Knit into back of 2nd stitch on left needle, then knit into front of first stitch and slip both stitches off needle together

Tw2R = Knit next 2 stitches together but do not slip from left needle, knit first st again, then slide both sts off needle together

W&T = Bring yarn to front of work. Slip next stitch purlwise. Bring yarn to back of work. Slip stitch back onto left-hand needle. Turn.



WS = Wrong side

Wyib = With yarn in back of work

Wyif = With yarn in front of work

MATERIALS

Sugar Bush® Chill™ (3.5 oz/100 g; 52 yds/48 m)

Sizes	XS	S	M	L	XL	2XL
Scarlet (1015)	13	14	16	17	18	20 balls

Size U.S. 17 (12.75 mm) circular knitting needles 2 sets of 24" [61 cm] long and 32" [81.5 cm] long **or size needed to obtain gauge**. 6 stitch markers. Tapestry needle.

SUGAR BUSH POLAR BERRY KNIT PULLOVER | KNIT

SIZES

To fit bust measurement

XS	28-34" [71-86.5 cm]
S	36-38" [91.5-96.5 cm]
M	40-42" [101.5-106.5 cm]
L	44-46" [112-117 cm]
XL	48-50" [122-127 cm]
2XL	56-56" [137-142 cm]

Finished bust

XS	35½" [90 cm]
S	39" [99 cm]
M	44½" [113 cm]
L	48" [122 cm]
XL	51½" [131 cm]
2XL	57" [144.5 cm]

GAUGES

9 sts and 12 rows = 4" [10 cm] in Honeycomb pat
 8 sts and 13 rows = 4" [10 cm] in Garter Ridge pat

INSTRUCTIONS

The instructions are written for smallest size. If changes are necessary for larger sizes the instructions will be written thus (.). Numbers for each size are shown in the same color throughout the pattern. When only one number is given in black, it applies to all sizes.

Pattern Stitches

Garter Ridge, worked back and forth: (multiple of 6 sts + 2) (See chart)

1st row: (RS). Knit.

2nd row: (WS). K1. Purl to last st. K1.

3rd row: K1. *P2. Sl1wyib. P3. Rep from * to last st. K1.

4th row: K1. *K3. Sl1wyif. K2. Rep from * to last st. K1.

5th and 6th rows: Rep 1st and 2nd rows.

7th row: K1. *P5. Sl1wyib. Rep from * to last st. K1.

8th row: K1. *Sl1wyif. K5. Rep from * to last st. K1.

Rep these 8 rows for pat.

Garter Ridge, worked in the rnd: (multiple of 6 sts)

1st and 2nd rnds: Knit.

3rd and 4th rnds: *P2. Sl1wyib. P3. Rep from * around.

5th and 6th rnds: Knit.

7th and 8th rnds: *P5. Sl1wyib. Rep from * around.

Rep these 8 rnds for pat.

Honeycomb, worked in the rnd: (multiple of 4 sts)

1st rnd: Knit.

2nd rnd: *Tw2L. Tw2R. Rep from * around.

3rd rnd: Knit.

4th rnd: *Tw2R. Tw2L. Rep from * around.

Rep these 4 rnds for pat.

Honeycomb, worked back and forth: (multiple of 4 sts + 2)

1st row: (WS). Purl.

2nd row: (RS). *Tw2L. Tw2R. Rep from * to end of row.

3rd row: Purl.

4th row: *Tw2R. Tw2L. Rep from * to end of row.

Rep these 4 rows for pat.

BODY

With longer circular needle, cast on **72 (78-90-96-102-114)** sts. Join in rnd, being careful not to twist sts. PM for beg of rnd.

Work in Garter Ridge pat for 5" [12.5 cm], ending with 4th or 8th rnd of pat.

Next rnd: Knit, inc **8 (10-10-12-14-14)** sts evenly spaced around. **80 (88-100-108-116-128)** sts.

Beg on 2nd rnd, work in Honeycomb pat until work from beg measures approx 14" [35.5 cm], ending on an odd-numbered rnd. Mark last even-numbered rnd worked on chart or above; this will be RS row when worked back and forth. Leave all sts on a spare needle.

FRONT YOKE

Left Sleeve: With shorter circular needle, cast on 29 sts using a provisional method. **Do not** join. Working back and forth across needle, proceed as follows:

1st row: (WS). Purl.

2nd row: (RS). Counting back from first st of front to find starting point in pat, beg with marked row of Honeycomb pat. Sl1wyib. Work Honeycomb pat across 8 sts. W&T.

3rd row: (WS). Purl to last st. K1.

4th row: Sl1wyib. Work Honeycomb pat across 18 sts. W&T.

5th row: Purl to last st. K1.

Leave all sts on a spare needle.

Right Sleeve: With second shorter circular needle, cast on 29 sts using a provisional method.

1st row: (WS). K1. P8. W&T.

SUGAR BUSH POLAR BERRY KNIT PULLOVER | KNIT

2nd row: (RS). Counting back from last st of front to find starting point in pat, work marked row of Honeycomb pat over 8 sts. K1.

3rd row: Sl1wyib. P18. W&T.

4th row: Work Honeycomb pat across 18 sts. K1.

5th row: K1. Purl to end of row.

Next row: (Joining row - RS). With longer circular needle, work Honeycomb pat 29 sts from Left Sleeve spare needle. Pat across **40 (44-50-54-58-64)** sts from Body spare needle. Place rem **40 (44-50-54-58-64)** sts on back st holder. Pat across 29 sts for Right Sleeve. **98 (102-108-112-116-122)** sts.

Slip first st of every row and cont even in Honeycomb pat until armholes measure approx **4½ (5-5-5½-6-6½)**" [**11.5 (12.5-12.5-14-15-16.5)** cm], ending on a WS row.

Shape neck: PM each side of center **6 (6-6-8-10-10)** sts.

Next row: (RS). Pat to marker. Place marked **6 (6-6-8-10-10)** sts on st holder for neck. Join a second ball of yarn and pat to end of row. **46 (48-51-52-53-56)** sts rem for each side.

Working both sides at the same time with separate balls of yarn, cast off at each neck edge 3 sts once, 2 sts once, then 1 st once. AT SAME TIME, when armholes measure **5½ (6-6½-7-7½-8)**" [**14 (15-16.5-18-19-20.5)** cm], ending on a RS row, proceed as follows:

Next row: (WS). Purl, dec **5 (5-6-6-6-6)** sts evenly across row. **35 (37-39-40-41-44)** sts rem when neck shaping is complete.

Slipping first st of every row, beg on 3rd row of pat, work 6 rows in Garter Ridge pat. Slip sts on waste yarn.

BACK YOKE

Left Sleeve: Remove provisional cast on from Front Yoke Left Sleeve and slip 29 sts on shorter circular needle.

Work as for Front Yoke Right Sleeve.

Right Sleeve: Remove provisional cast on from Front Yoke Right Sleeve and place 29 sts on shorter circular needle.

Work same as Front Yoke Left Sleeve.

Next row: (RS). With longer circular needle and RS facing, work Honeycomb pat across 29 sts for Right Sleeve. Pat across **40 (44-50-54-58-64)** sts for Back. Pat across 29 sts for Left Sleeve. **98 (102-108-112-116-122)** sts.

Sl first st of every row, cont even in pat until armholes measure approx **5½ (6-6½-7-7½-8)**" [**14 (15-16.5-18-19-20.5)** cm], ending on a RS row.

Next row: (WS). Purl, dec **11 (11-12-12-13-13)** sts evenly across. **87 (91-96-100-103-109)** sts rem.

Slipping first st of each row, and knitting last st of each row, cont from 7th row of Garter Ridge pat, taking care to match pat with Front. Work 2 rows even in pat.

Shape neck: PM each side of center **11 (11-12-14-15-15)** sts.

Next row: (RS). Pat to marker. Place center **11 (11-12-14-15-15)** sts on holder. Join a second ball of yarn and pat to end of row. **38 (40-42-43-44-47)** sts rem each side. Working both sides at same time with separate balls of yarn, cast off 3 sts at each neck edge once. **35 (37-39-40-41-44)** sts rem.

Graft Front and Back Yokes sts tog.

CUFFS

With shorter circular needle and RS facing, pick up and knit **36 (38-40-42-44-46)** sts evenly along cuff edge of Sleeve. Join in rnd. PM on first st.

Beg on 2nd rnd of Garter Ridge pat, work 4 rnds in pat.

Inc 1 st each end of next rnd and following 8th rnd, taking inc sts into pat. **40 (42-44-46-48-50)** sts. Cont even in pat until cuff measures 5" [12.5 cm].

Cast off knitwise.

FINISHING

Weave in ends. Block pieces to finished measurements.

Collar: With shorter circular needle and RS facing, pick up and knit **10 (10-11-11-11-11)** sts down left front neck. K**6 (6-6-8-10-10)** from front st holder. Pick up and knit **16 (16-17-17-17-17)** sts up right front neck to Back st holder. K**11 (11-12-14-15-15)** from Back st holder. Pick up and knit 6 sts across left back neck edge. **49 (49-52-56-57-59)** sts. Join in rnd. PM on first st.

Next rnd: Knit.

SUGAR BUSH POLAR BERRY KNIT PULLOVER | KNIT

Next rnd: Knit, dec 7 (7-7-9-9) sts evenly around. **42** (42-45-47-48-50) sts.

Cont in stocking st (knit every rnd) until Collar measures 2½" [6 cm], inc 0 (0-3-1-0-4) st(s) evenly across last rnd. **42** (42-48-48-48-54) sts.

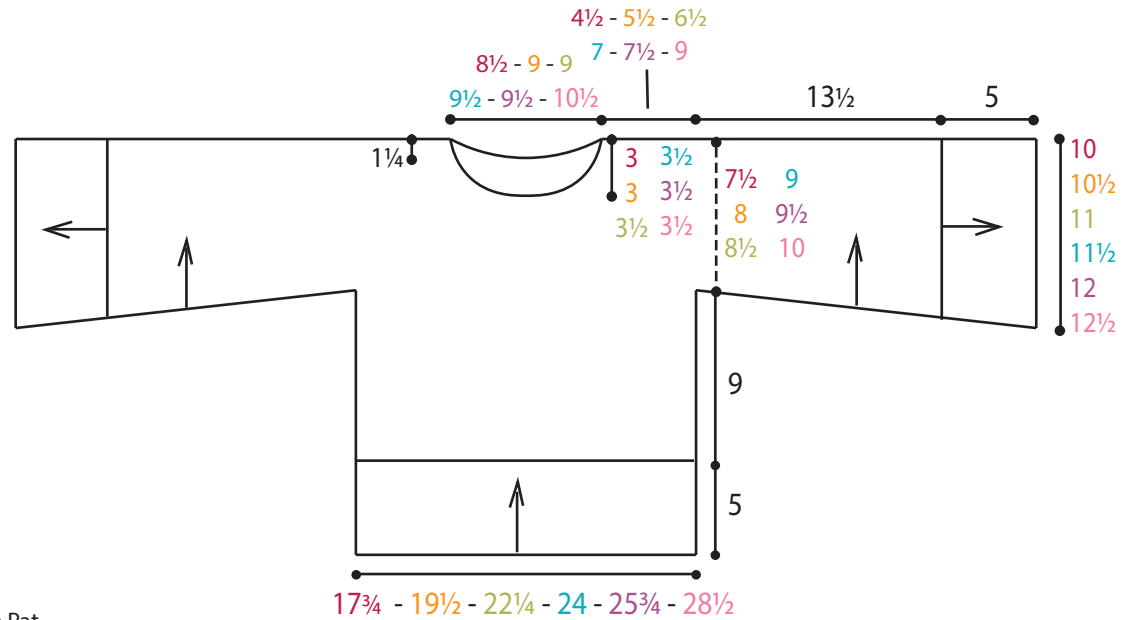
1st and 2nd rnds: Purl.

3rd and 4th rnds: *K3. Sl1P wyif. K2. Rep from * around.

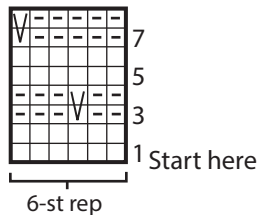
5th and 6th rnds: Purl.

7th and 8th rnds: *Sl1P wyif. K5. Rep from * around.

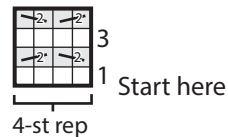
Rep last 8 rnds once more. Cast off loosely purlwise.



Garter Ridge Pat
(worked in rows or rnds)



Honeycomb Pat



Key

- = Knit on RS rows. Purl on WS rows.
- ◻ = Purl on RS rows. Knit on WS rows.
- ↔ = Tw2R
- ↔ = Tw2L
- ∇ = Sl1wyib or Sl1wyif