



MATERIALS

Caron® x Pantone™ (3.5 oz /100 g; 127 yds/116 m)

Contrast A Raven (01005)

1 braid

Contrast B, C, D, E and F Purple Pops (01017)

1 braid

Size U.S. J/10 (6 mm) crochet hook **or size needed to obtain gauge.**

A-19-0000

B-13-3406

C-16-3307

D-18-3838

E-16-0737

F-19-4324



CROCHET | SKILL LEVEL: **INTERMEDIATE**

ABBREVIATIONS

Approx = Approximate(ly)

Ch = Chain(s)

Cont = Continue

Dec = Decrease

Hdc = Half double crochet

Pat = Pattern

Rem = Remain(ing)

Rep = Repeat

Rnd(s) = Round(s)

RS = Right side

Sc = Single crochet

Sc2tog = Draw up a loop in each of next 2 stitches. Yoh and draw through all loops on hook.

Sl st = Slip stitch

St(s) = Stitch(es)

WS = Wrong side

Yoh = Yarn over hook

SIZE

One size to fit adult.

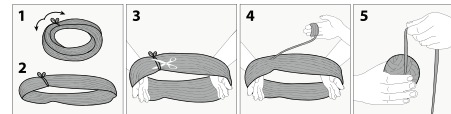
GAUGE

12 sc and 14 rows = 4" [10 cm].

INSTRUCTIONS

Notes:

- Before working with Caron® x Pantone™ multi-shade yarn braid, separate each color link and wind into 5 separate balls.



- Each color link will be referenced by its Pantone # (see ball band)
- Designate each different shade of the 5 separate yarn

balls as Contrast A, B, C, D, E and F as noted in Materials section (or as desired).

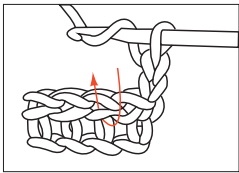
- Due to finite amount of yarn in each shade, pattern gauge must be matched to ensure successful results
- When working from chart and joining new color, work to last 2 loops on hook of last st. Draw new color through 2 loops, then proceed in new color.
- Carry color not in use across top of previous rnd and work sts around it to prevent stranding.

Ribbing:

With A, ch 10.

1st row: (RS). 1 hdc in 3rd ch from hook. 1 hdc in each ch to end of ch. Turn. 8 hdc.

2nd row: (WS). Ch 2. Work 1 hdc in horizontal bar created below st in previous row (bar is below loops normally worked on WS – see diagram) in each hdc to end of row. Turn.



Rep last row until Ribbing measures approx 21" [53.5 cm] long when slightly stretched, ending on a WS row. Turn.

Join Ribbing seam by working 1 sl st through both thicknesses in each back loop and each rem loop of foundation ch. **Do not** fasten off.

Beg working in rnds: Foundation rnd: Ch 1. Working along side edge of ribbing, work 72 sc evenly around. Join with sl st to first sc. 72 sc.

1st to 18th rnds: Ch 1. Work 1st to 18th rows of Chart, noting 8-st rep will be worked 9 times. Join with sl st to first sc at end of each rnd.

19th rnd (Dec rnd): Ch 1. *With E, 1 sc in each of next 4 sc. With A, sc2tog. 1 sc in next sc. With E, 1 sc in next sc. Rep from * around. Join with sl st to first sc. 63 sc.

20th rnd: Ch 1. *With E, 1 sc in each of next 3 sc. With A, 1 sc in each of next 4 sc. Rep from * around. Join with sl st to first sc.

Proceed as follows with A only:

Shape top: 1st rnd: Ch 1. *1 sc in each of next 5 sc. Sc2tog. Rep from * around. Join with sl st to first sc. 54 sts.

2nd rnd: Ch 1. 1 sc in each st around. Join with sl st to first sc.

3rd rnd: Ch 1. *1 sc in each of next 4 sc. Sc2tog. Rep from * around. Join with sl st to first sc. 45 sts.

4th rnd: Ch 1. *1 sc in each of next 3 sc. Sc2tog. Rep from * around. Join with sl st to first sc. 36 sts.

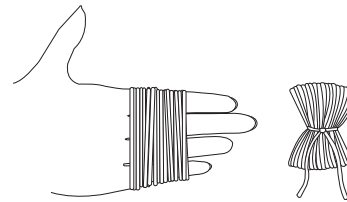
5th rnd: Ch 1. *1 sc in each of next 2 sc. Sc2tog. Rep from * around. Join with sl st to first sc. 27 sts.

6th rnd: Ch 1. *1 sc in next sc. Sc2tog. Rep from * around. Join with sl st to first sc. 18 sts.

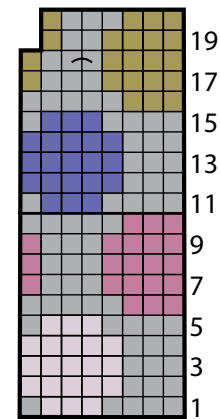
Fasten off, leaving a long end. Thread end through rem sts and draw up tightly. Fasten securely.

Pompom

Wind F around 4 fingers approx 100 times. Remove from fingers and tie tightly in center. Cut through each side of loops. Trim to a smooth round shape. Sew to top of Hat.



Chart



8-st rep Start Here

Key

- = Contrast A
- = Contrast B
- = Contrast C
- = Contrast D
- = Contrast E