



## MATERIALS

**Coats & Clark Dual Duty XP® All-purpose Thread:** White (0100), Pink (1210) or to match fabric

**Coats & Clark® Metallic Thread:** Silver (9420)

**Coats & Clark Dual Duty XP® Multicolor Thread:** Baby pastels (9312)

**Coats & Clark Dual Duty XP® Heavy:** White (0100) (optional)



SEWING | SKILL LEVEL: INTERMEDIATE

## Featuring Coats & Clark® Metallic Thread and Coats & Clark Dual Duty XP® All-purpose Thread

Get the school year off to a great start with this awesome back pack! Give the flap some glam with Coats & Clark Dual Duty XP® multicolor thread and some Coats & Clark Silver Metallic Thread

### MATERIALS CONTINUED

1 yard (.91m) Animal Print cotton denim or canvas

½ yard (.46m) Pink cotton for flap

2 yards (1.83m) 1" (2.54cm) wide webbing

1¼ yards (1.14m) of drawstring cording

Cotton batting

Large hook and d-ring

Two rectangle rings (1 pkg. of two)

Adjustable slide buckles

Chalk or a removeable fabric marking pen

Size 90 or 100 (16 or 18) Topstitch needle for the sewing machine

Pinking shears

### CUTTING:

#### **From pink cotton:**

1 rectangle 9" x 10" (22.86cm x 25.40cm) for flap

5 squares 4" x 4" (10.16cm x 10.16cm) for attaching strips

1 bottom using the pattern given for lining

2 rectangles 14¼" x 8½" (36.83cm x 21.59cm) for lining

1 rectangle 3" x 1½" (7.62cm x 3.81cm) to cover raw edges

#### **From cotton batting:**

1 rectangle 9" x 10" (22.86cm x 25.40cm) for flap

#### **From animal print:**

1 flap using the pattern given

2 bottoms using the pattern given

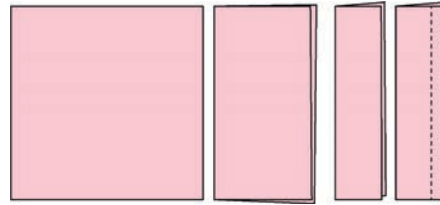
2 rectangles 14¼" x 8½" (36.83cm x 21.59cm) for main backpack

1 strip 27¼" x 4" (69.21cm x 10.16cm) for buttonhole strip

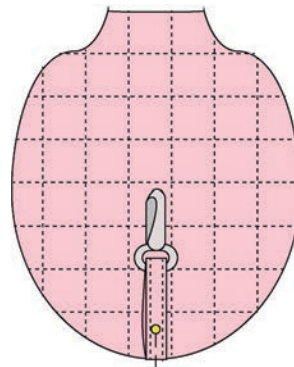
## SEWING

1. Thread the machine with Dual Duty XP Multicolor thread on top and all-purpose thread in the bobbin.
2. Use a straight stretch stitch (sometimes called a triple straight stitch) so the stitching will really “stand out”, or a regular straight stitch.
3. Mark a 1" grid on the 9" x 10" (22.86cm x 25.40cm) pink cotton fabric.
4. Place it on the 9" x 10" (22.86cm x 25.40cm) cotton batting.
5. Stitch all the horizontal lines.
6. Replace the top thread with Metallic silver thread
7. Stitch all of the vertical lines.
8. Cut out the flap from the quilted piece, using the pattern given.
9. Thread with Dual Duty XP all-purpose thread on top and in the bobbin.
10. Fold the five 4" x 4" (10.16cm x 10.16cm) attaching strip squares in half and press.
11. Fold in each side to meet the fold, and press.

12. Fold to create the attaching strip. Stitch near the folded edge as shown. Set four aside.



13. Pin one of the attaching strips with the hook in place on it, at the bottom of the flap as shown.

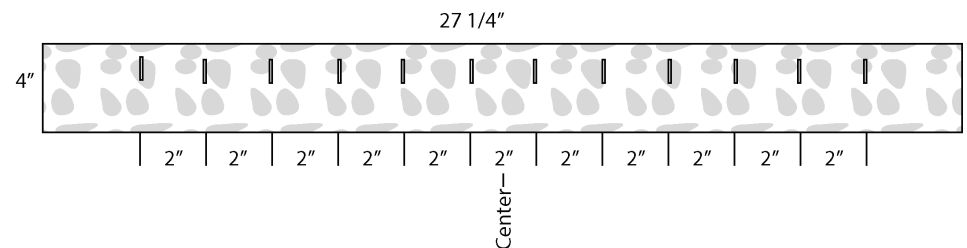


14. Place the quilted flap right sides together with the animal print flap and stitch using a ¼" seam allowance. Leave the straight edge open to turn.
15. Trim using pinking shears, turn and press.

16. Topstitch ¼" (.635cm) in from the edge.
17. Fold the 27 ¼" x 4" (69.21cm x 10.16cm) buttonhole strip in half, wrong sides together matching the long sides.
18. Following the diagram shown below, mark the location of the buttonholes on the folded strip.
19. Stitch ⅝" (1.58cm) long buttonholes ¼" (.635cm) from the folded edge.
20. Fold the buttonhole strip right sides together matching the short ends, opening up the fold.
21. For the remainder of the back pack, use a ⅝" (1.58cm) seam allowance. Stitch the seam.
22. Press the seam open.

23. To complete the remainder of the back pack, thread with Dual Duty all-purpose thread or Coats Dual Duty XP Heavy thread. The heavier thread is always a good choice for a project that will see heavy duty use. If using the heavier thread be sure to use a larger needle, a size 16 or 18 and increase the stitch length.
24. Place the two 14 ¼" x 8 ½" (36.83cm x 21.59cm) animal print rectangles right sides together and stitch the 8 ½" sides together.
25. Press the seam open.
26. Place the rectangle rings on the remaining two 4" x 4" (10.16cm x 10.16cm) attaching strip.

### Buttonholes Diagram



27. Place the two bottoms together, wrong sides together. The extra bottom will reinforce the back pack and give it some substance.

28. Pin rectangle rings as indicated on the bottoms.



29. Sew around the bottoms, near the edge, attaching the two bottom pieces together and stitching the rectangle rings in place.

30. The rectangle rings just attached are on the back of the bottom panel. The seam of the buttonhole strip is the back of the strip. So, when you assemble the remainder of the back pack, be sure that those two are on the same side, creating the back of the back pack. Pin the bottom right sides together with the main back pack, matching the notches with the side seams and stitch.

31. Pin the buttonhole strip right sides together being sure the seam is on the same side as the rectangle rings. Match the notches on the bottom panel with the side seams.

32. Stitch the buttonhole strip in place.

33. Stitch the side seams in the 14¼" x 8½" (36.83cm x 21.59cm) lining and press the seams allowances open.

34. Stitch the bottom into the lining.

35. Press the top edge under ⅝" (1.58cm).

36. Place the lining inside outer backpack wrong sides together and hand stitch the lining to the seam joining the buttonhole strip to the backpack.

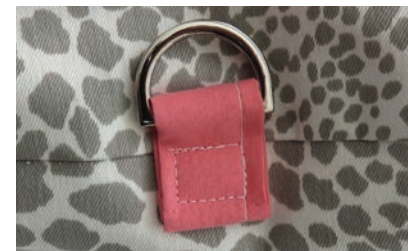
37. Place raw edge of the flap aligned with the buttonhole band seam on the back of the backpack and pin, as shown. The raw edge will be covered shortly.



38. Sew close to the edge.

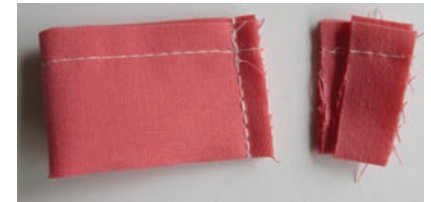
39. Fold one of the attaching strips in half and slide on the other half of the Hook and D-ring. Fold under the raw edge ½" (1.27cm).

40. Place it as shown, on the bottom seam below the hook. Stitch a rectangle to anchor it in place.



41. Fold the remaining attaching strip in half and stitch the short end.

42. Trim as shown.



43. Turn right side out and fold so the seam is in the center. Stitch over the seam creating a slide for the draw string.



44. Slide onto the drawstrings.



45. Cut the 2 yard (1.83m) piece of webbing in half to equal two 1 yard (.91m) pieces. Stitch the ends as shown, over the raw edge of the flap.



46. Slide on the adjustable slide buckles as shown.



47. Thread them through the bottom rings and bring them back up to the adjustable slide buckles on the underside of the first strip.



48. Fold under ¼" on the raw edge and stitch 1" from the end as shown.



49. The straps are complete!



50. Knot and fringe the ends of the drawstring.



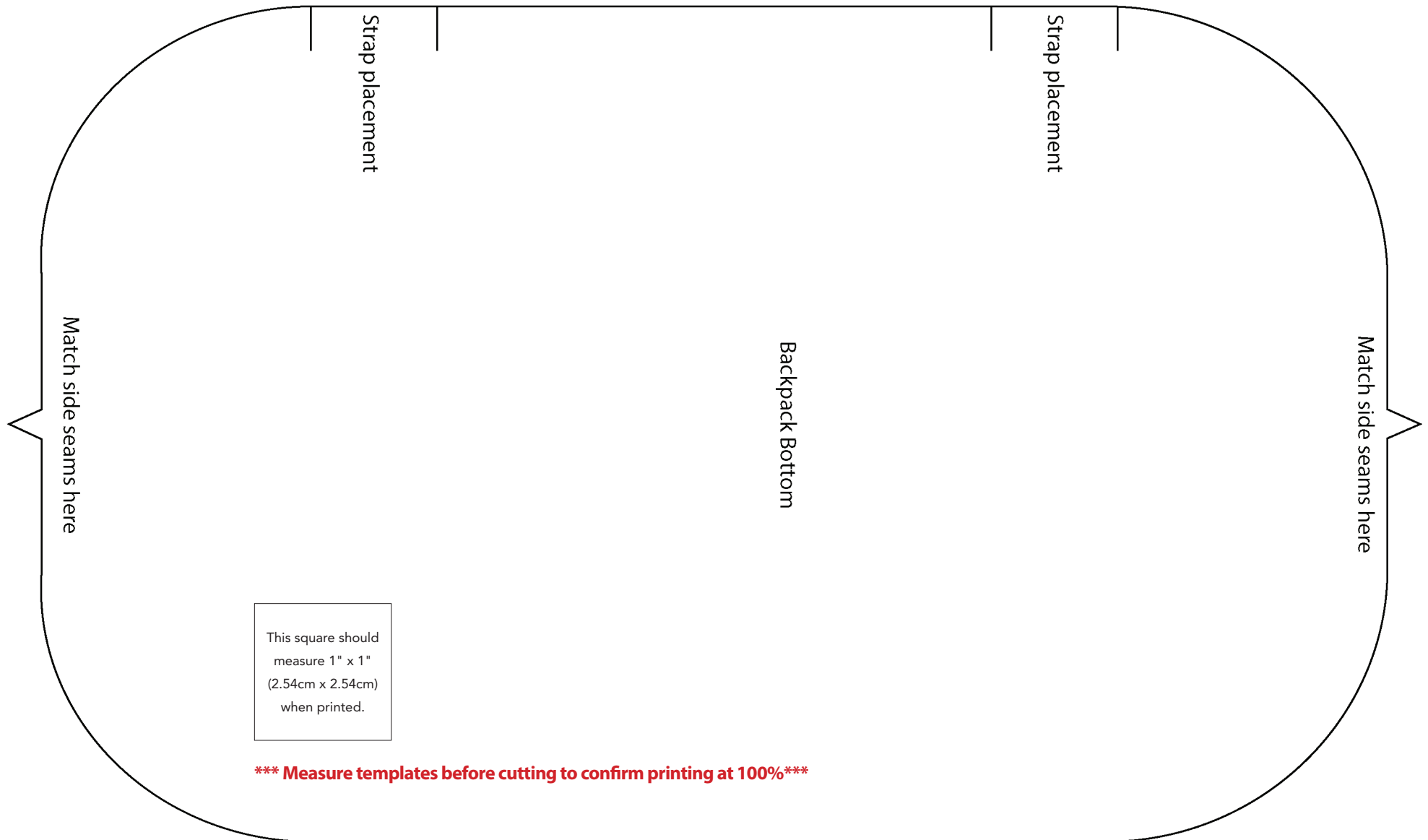
51. Turn under the raw edges of the 3" x 1½" (7.62cm x 3.81cm) and place it over the raw edges of the strap and flap ends.

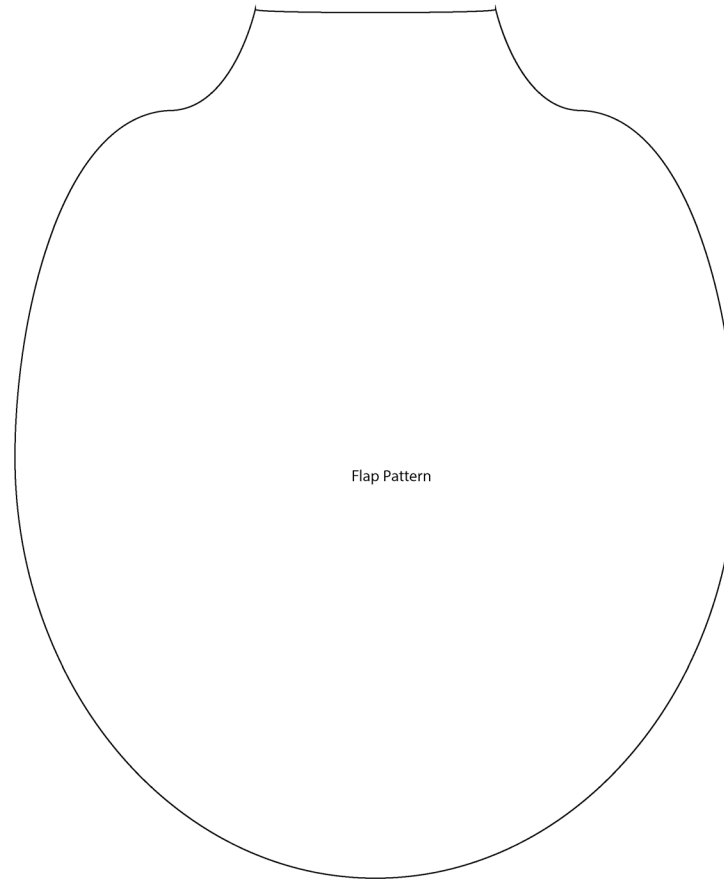
52. Stitch near the edges.



53. Fill up that back pack and let the school year begin!







This square should  
measure 1" x 1"  
(2.54cm x 2.54cm)  
when printed.

**\*\*\* Measure templates before cutting to confirm printing at 200%\*\*\***