



shell rummel®

Featuring Soft Repose by Shell Rummel

Create this fun pillow using awesome Shell Rummel Soft Response Raindrop print fabric. The pillow is accented with raw edge detail on the corner triangle.

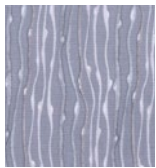
Collection:	Soft Repose by Shell Rummel
Technique:	Decorative Stitching
Skill Level:	Beginner
Crafting Time:	½ day*
Finished Size:	12" x 16" (30.5cm x 41cm)

**Crafting time based on Beginner skill level*

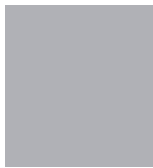
Project designed by Marie Duncan

Fabric Requirements

DESIGN	ARTICLE CODE	YARDAGE
<i>Soft Repose by Shell Rummel</i>		
(A) Raindrop	PWSR001.8GREY	½ yard (.46m)
(B) Grey Linen or linen/cotton blend		½ yard (.46m)



(A)



(B)

Additional Requirements

- Coats Dual Duty XP® sewing thread
- Coats® Cotton thread , colors nugrey (450) and white (100)
- Cotton batting ½ yard (.46m)
- Fiberfill
- Straight pins

Cutting

Fabric A:

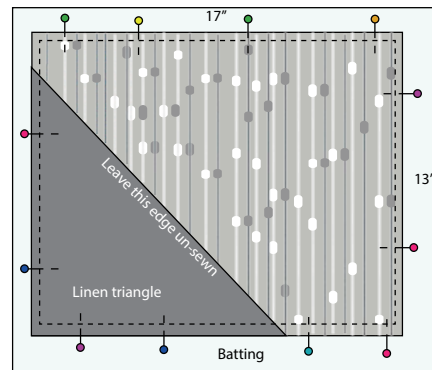
Two rectangles 13" x 17" (33.02cm x 43.18cm)

Fabric B:

One Square 12" x 12" (30.48cm x 30.48cm) sub cut corner to corner, into a triangle

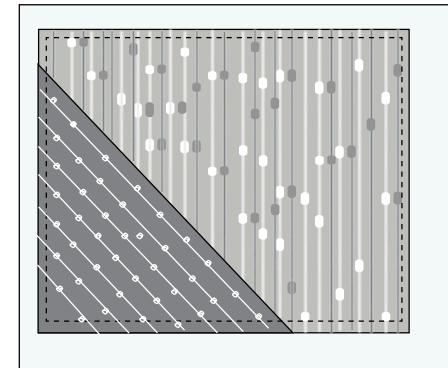
Instructions

1. Cut the 12" x 12" (30.48cm x 30.48cm) **Fabric B** square from corner to corner, creating a triangle.
2. Place the triangle in the lower left corner of one of the 13" x 17" (33.02cm x 43.18cm) rectangles. (Save the other triangle for another use)
3. Place the two on top of batting as shown



4. Pin in place.
5. Thread with **Coats Dual Duty XP®** sewing thread top and bobbin.
6. Stitch near the edge, around the outside of the rectangle, securing the layers together. Do **NOT** stitch on the diagonal edge of the triangle.
7. Set your machine for free motion stitching following the instructions in your manual.

8. Thread with Nugrey **Coats® Cotton** thread top and bobbin.
9. Free motion stitch as shown, following the diagonal cut edge of the fabric. Stitch a few inches, then stitch a "bobble". Continue stitching another few inches, another "bobble", etc.



10. Repeat, approximately 1" (2.54cm) from the first line.
11. Repeat until you have filled the triangle.
12. Then thread with White **Coats® Cotton** thread top and bobbin.
13. Stitch the same lines about ¼" (.635cm) from the first ones, filling in the area.
14. Trim the excess batting.
15. Thread with **Coats Dual Duty XP®** sewing thread top and bobbin.
16. Place the stitched rectangle right sides together with the remaining 13" x 17" (33.02cm x 43.18cm).
17. Using a ½" (1.27cm) seam allowance, stitch all the way around leaving a 4" (10.16cm) opening to turn.
18. Clip the corners, turn and press.
19. Stuff with fiberfill.
20. Hand sew the opening closed.