

BERNAT® PARTY HEART-Y MOSAIC CROCHET BABY BLANKET



CROCHET | SKILL LEVEL: **INTERMEDIATE**

ABBREVIATIONS

Approx = Approximately

Beg = Begin(ning)

Ch = Chain(s)

Mosaic dc = Working *in front of* previous rows, 1 dc in skipped sc 3 rows below. Skip next ch-2 space (behind mosaic dc).

Pat = Pattern

Rep = Repeat

RS = Right side

Sc = Single crochet

Sl st = Slip stitch

Sp = Space

St(s) = Stitch(es)

Yoh = Yarn over hook

MEASUREMENT

Approx 40" [101.5 cm] square.

GAUGE

13 sc and 14 rows = 4" [10 cm].

With A, ch 114 (multiple of 18 ch + 6).

Foundation row: (WS). 1 sc in 2nd ch from hook. 1 sc in each ch to end of chain. Turn. 113 sc.

INSTRUCTIONS

Notes:

- To change colors, work to last 2 loops on hook of previous stitch and draw new color through.
- When working Mosaic Heart Pat, carry color not in use loosely up side of work, keeping color change to WS.

With A as color 1 and D as color 2, beg Mosaic Heart Pat as follows: (See Chart on page 3).

1st row: With Color 1, ch 1. 1 sc in each of first 2 sc. *1 sc in each of next 5 sc. Ch 2. Skip next sc. 1 sc in each of next 7 sc. Ch 2. Skip next sc. 1 sc in each of next 4 sc. Rep from * to last 3 sc. 1 sc in each of last 3 sc. Turn.

2nd row: With Color 1, ch 1. 1 sc in each of first 3 sc. *1 sc in each of next 4 sc. Ch 2. Skip next ch-2 sp.

MATERIALS

Bernat® Baby Velvet™ (10.5 oz/300 g; 492 yds/450 m)

Contrast A Indigo Velvet (86035) **1 ball**

Contrast B Tropical Aqua (86046) **1 ball**

Contrast C Bleached Aqua (86030) **1 ball**

Contrast D Coral (86048) **1 ball**

Contrast E Flannel (86049) **1 ball**

Size U.S. H/8 (5 mm) crochet hook **or size needed to obtain gauge.**

1 sc in each of next 7 sc. Ch 2. Skip next ch-2 sp. 1 sc in each of next 5 sc. Rep from * to last 2 sc. 1 sc in each of last 2 sc. Turn.

3rd row: With Color 2, ch 1. 1 sc in each of first 2 sc. *1 sc in each of next 5 sc. Mosaic dc. Ch 2. Skip next sc. 1 sc in each of next 5 sc. Ch 2. Skip next sc. Mosaic dc. 1 sc in each of next 4 sc. Rep from * to last 3 sc. 1 sc in each of last 3 sc. Turn.

4th row: With Color 2, ch 1. 1 sc in each of first 3 sc. *1 sc in each of next 5 sts. Ch 2. Skip next ch-2 sp. 1 sc in each of next 5 sc. Ch 2. Skip next ch-2 sp. 1 sc in each of next 6 sts. Rep from * to last 2 sc. 1 sc in each of last 2 sc. Turn.

5th row: With Color 1, ch 1. 1 sc in each of next 2 sc. *1 sc in each of next 2 sc. Ch 2. Skip next sc. 1 sc in each of next 3 sc. Mosaic dc. Ch 2. Skip next sc. 1 sc in each of next 3 sc. Ch 2. Skip next sc. Mosaic dc. 1 sc in each of next 3 sc. Ch 2. Skip next sc. 1 sc in next sc. Rep from * to last 3 sc. 1 sc in each of last 3 sc. Turn.

6th row: With Color 1, ch 1. 1 sc in each of next 3 sc. *1 sc in each of next sc. Ch 2. Skip next ch-2 sp. 1 sc in each of next 4 sts. Ch 2. Skip next ch-2 sp. 1 sc in each of next

3 sc. Ch 2. Skip next ch-2 sp. 1 sc in each of next 4 sts. Ch 2. Skip next ch-2 sp. 1 sc in each of next sc. Rep from * to last 3 sc. 1 sc in each of last 3 sc. Turn.

7th row: With Color 2, ch 1. 1 sc in each of first 2 sc.* 1 sc in each of next 2 sc. Mosaic dc. Ch 2. Skip next sc. (1 sc in each of next 3 sc. Mosaic dc) twice. 1 sc in each of next 3 sc. Ch 2. Skip next sc. Mosaic dc. 1 sc in next sc. Rep from * to last 3 sc. 1 sc in each of last 3 sc. Turn.

8th row: With Color 2, ch 1. 1 sc in each of first 3 sc.* 1 sc in each of next 2 sts. Ch 2. Skip next ch-2 sp. 1 sc in each of next 11 sts sc. Ch 2. Skip next ch-2 sp. 1 sc in each of next 3 sts. Rep from * to last 2 sc. 1 sc in each of last 2 sc. Turn.

9th row: With Color 1, ch 1. 1 sc in each of first 2 sc. *Ch 2. Skip next sc. 1 sc in each of next 2 sc. Mosaic dc. Ch 2. Skip next sc. 1 sc in each of next 9 sc. Ch 2. Skip next sc. Mosaic dc. 1 sc in each of next 2 sc. Rep from * to last 3 sc. Ch 2. Skip next sc. 1 sc in each of last 2 sc. Turn.

10th row: With Color 1, ch 1. 1 sc in each of first 2 sc. Ch 2. Skip next ch-2 sp. *1 sc in each of next 3 sc. Ch 2. Skip next ch-2 sp. 1 sc in each of next 9 sc. Ch 2. Skip next ch-2 sp.

1 sc in each of next 3 sts. Ch 2. Skip next ch-2 sp. Rep from * to last 2 sc. 1 sc in each of last 2 sc. Turn.

11th row: With Color 2, ch 1. 1 sc in each of first 2 sc. Mosaic dc. *Ch 2. Skip next sc. 1 sc in each of next 2 sc. Mosaic dc. 1 sc in each of next 9 sc. Mosaic dc. 1 sc in each of next 2 sc. Ch 2. Skip next sc. Mosaic dc. Rep from * to last 2 sc. 1 sc in each of last 2 sc. Turn.

12th row: With Color 2, ch 1. 1 sc in each of first 3 sts. *Ch 2. Skip next ch-2 sp. 1 sc in each of next 15 sts. Ch 2. Skip next ch-2 sp. 1 sc in next st. Rep from * to last 2 sc. 1 sc in each of last 2 sc. Turn.

13th row: With Color 1, ch 1. 1 sc in each of first 2 sc. *Ch 2. Skip next sc. Mosaic dc. Ch 2. Skip next sc. 1 sc in each of next 13 sc. Ch 2. Skip next sc. Mosaic dc. Rep from * to last 3 sc. Ch 2. Skip next sc. 1 sc in each of last 2 sc. Turn.

14th row: With Color 1, Ch 1. 1 sc in each of first 2 sc. Ch 2. Skip next ch-2 sp. *1 sc in next st. Ch 2. Skip next ch-2 sp. 1 sc in each of next 13 sc. Ch 2. Skip next ch-2 sp. 1 sc in next st. Ch 2. Skip next ch-2 sp. Rep from * to last 2 sc. 1 sc in each of last 2 sc. Turn.

15th row: With Color 2, ch 1. 1 sc in each of first 2 sc. Mosaic dc. *Ch 2. Skip next sc. Mosaic dc. 1 sc in each of next 13 sc. Mosaic dc. Ch 2. Skip next sc. Mosaic dc. Rep from * to last 2 sc. 1 sc in each of last 2 sc. Turn.

16th row: With Color 2, ch 1. 1 sc in each of first 3 sts. *Ch 2. Skip next ch-2 sp. 1 sc in each of next 15 sts. Ch 2. Skip next ch-2 sp. 1 sc in next sc. Rep from * to last 2 sc. 1 sc in each of last 2 sc. Turn.

17th row: With Color 1, ch 1. 1 sc in each of first 2 sc. *Ch 2. Skip next sc. Mosaic dc. (1 sc in each of next 2 sc. Ch 2. Skip next st) twice. 1 sc in each of next 3 sc. (Ch 2. Skip next sc. 1 sc in each of next 2 sc) twice. Mosaic dc. Rep from * to last 3 sc. Ch 2. Skip next sc. 1 sc in each of next 2 sc. Turn.

18th row: With Color 1, ch 1. 1 sc in each of first 2 sc. Ch 2. Skip next ch-2 sp. *(1 sc in each of next 3 sts. Ch 2. Skip next ch-2 sp. 1 sc in each of next 2 sc. Ch 2. Skip next ch-2 sp) twice. 1 sc in each of next 3 sts. Ch 2. Skip next ch-2 sp. Rep from * to last 2 sc. 1 sc in each of last 2 sc.

19th row: With Color 2, ch 1. 1 sc in each of first 2 sts. *Mosaic dc. 1 sc in each of next 2 sc. Ch 2. Skip next sc. Mosaic dc. 1 sc in each of next

BERNAT® PARTY HEART-Y MOSAIC CROCHET BABY BLANKET

2 sc. Mosaic dc. Ch 2. Skip next sc. 1 sc in next sc. Ch 2. Skip next sc. Mosaic dc. 1 sc in each of next 2 sc. Mosaic dc. Ch 2. Skip next sc. 1 sc in each of next 2 sc. Rep from * to last ch-2 sp. Mosaic dc. 1 sc in each of last 2 sc. Turn.

20th row: With Color 2, ch 1. 1 sc in each of first 3 sts. *1 sc in each of next 2 sc. Ch 2. Skip next ch-2 sp. 1 sc in each of next 4 sts. Ch 2. Skip next ch-2 sp. 1 sc in next sc. Ch 2. Skip next ch-2 sp. 1 sc in each of next 4 sts. Ch 2. Skip next ch-2 sp. 1 sc in each of next 3 sts. Rep from * to last 2 sc. 1 sc in each of last 2 sc. Turn.

21st row: With Color 1, ch-1. 1 sc in each of first 2 sc. *1 sc in each of next 2 sc. (Ch 2. Skip next sc. Mosaic dc. 1 sc in each of next 4 sc. Mosaic dc) twice. Ch 2. Skip next sc. 1 sc in next sc. Rep from * to last 3 sc. 1 sc in each of last 3 sc. Turn.

22nd row: With Color 1, ch 1. 1 sc in each of first 3 sc. *1 sc in next sc. Ch 2. Skip next ch-2 sp. (1 sc in each of next 6 sts. Ch 2. Skip next ch-2 sp) twice. 1 sc in each of next 2 sc. Rep from * to last 2 sc. 1 sc in each of last 2 sc. Turn.

23rd row: With Color 2, ch 1. 1 sc in each of first 2 sc. *1 sc in each of next 2 sc. Mosaic dc. (1 sc in each of next 6 sc. Mosaic dc) twice. 1 sc in next sc. Rep from * to last 3 sc. 1 sc in each of last 3 sc. Turn.

24th row: With Color 2, ch 1. 1 sc in each st to end of row. Turn. These 24 rows form Mosaic Heart Pat.

Rep these 24 rows 4 times more in the following color combinations:

B as Color 1, E as Color 2.
C as Color 1, A as Color 2.
D as Color 1, B as Color 2.
E as Color 1, C as Color 2.

Border

With RS facing, join B with sl st to top right corner of Blanket.

1st rnd: With B, ch 1. Work sc evenly around Blanket working 3 sc in each corner. Join with sl st to first sc.

2nd rnd: Ch 1. 1 sc in each sc around, working 3 sc in each corner. Join with sl st to first sc.

3rd and 4th rnds: With C, as 2nd rnd.

5th and 6th rnds: With D, as 2nd rnd.

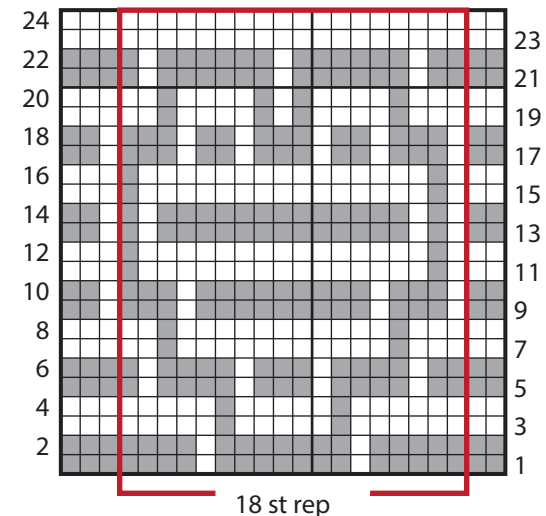
7th and 8th rnds: With E, as 2nd rnd.

9th and 10th rnds: with A, as 2nd rnd.

Fasten off.

How to read Mosaic Chart:

- Each square of chart represents 1 stitch.
- Right side rows (odd numbered rows) are read from right to left. Wrong side rows (even numbered rows) are read from left to right.
- Each row is worked in one color only. First stitch of chart indicates the color to be used in that row.
- When a contrast color appears (eg: white square in a gray row) work as "ch-2. Skip next st".
- On right side rows when a ch-2 sp appears, work Mosaic dc into skipped st 3 rows below.



Key
 = Color 1
 = Color 2