



KNIT | SKILL LEVEL: INTERMEDIATE

ABBREVIATIONS

Alt = Alternate(ing)

Approx = Approximately

K = Knit

K2(3)tog = Knit next 2(3) stitches together

Kfb = Increase 1 stitch by knitting into front and back of next stitch

Pat = Pattern

Pfb = Increase 1 stitch by purling into front and back of next stitch

Pss0 = Pass slipped stitch over

Rep = Repeat

RS = Right side

Sl1 = Slip next stitch knitwise

Ssk = Slip next 2 stitches knitwise one at a time. Pass them back onto left-hand needle, then knit through back loops together

St(s) = Stitch(es)

WS = Wrong side

Yo = Yarn over

MEASUREMENTS

Approx 28½" [72.5 cm] deep x 65" [165 cm] wide.

GAUGE

Approx 28½" [72.5 cm] deep x 65" [165 cm] wide.

INSTRUCTIONS

Note: Work back and forth across needle in rows.

Cast on 1 st.

1st row: (RS). Kfb. 2 sts.

2nd and alt rows: Knit.

3rd row: K1. Kfb. 3 sts.

5th row: K1. Kfb. K1. 4 sts.

7th row: K2. Kfb. K1. 5 sts.

9th row: Knit to last 3 sts. Kfb. K2.

10th row: Knit.

Rep last 2 rows until there are 134 sts, ending on a WS row.

Proceed in Lacy Pat as follows (multiple of 14 sts + 8):

Note: See chart on page 3.

1st row: (RS). K4. *K2tog. yo. K1. yo. ssk. K3. K2tog. yo. K4. Rep from * to last 4 sts. K1. Kfb. K2.

2nd row: K2. Pfb. Purl to last 2 sts. K2.

MATERIALS

Caron® One Pound™ (16 oz/454 g; 812 yds/742 m)

Azure (10523)

1 ball

Size U.S. 8 (5 mm) circular knitting needle 29" [73.5 cm] long **or size needed to obtain gauge.**

3rd row: K3. *K2tog. yo. K3. yo. ssk. K1. K2tog. yo. K4. Rep from * to last 7 sts K2tog. yo. K2. Kfb. K2.

4th row: K2. Purl to last 2 sts. K2.

5th row: K2. K2tog. yo. *K5. yo. Sl1. K2tog. pssso. yo. K4. K2tog. yo. Rep from * to last 7 sts. K4. Kfb. K2.

6th row: As 2nd row.

7th row: K4. *yo. ssk. K4. yo. ssk. K3. K2tog. yo. K1. Rep from * to last 9 sts. yo. ssk. K4. Kfb. K2.

8th row: As 4th row.

9th row: K5. *yo. ssk. K4. yo. ssk. K1. K2tog. yo. K3. Rep from * to last 9 sts. yo. ssk. K4. Kfb. K2.

10th row: As 2nd row.

11th row: K6. *yo. ssk. K4. yo. K3tog. yo. K5. Rep from * to last 10 sts. yo. ssk. K5. Kfb. K2.

12th row: As 4th row.

13th row: K4. K2tog. yo. *K1. yo. ssk. K3. K2tog. yo. ** K4. K2tog. yo. Rep from * to last 3 sts, ending at **. Kfb. K2.

14th row: As 2nd row.

15th row: K3. *K2tog. yo. K3. yo. ssk. K1. K2tog. yo. ** K4. Rep from * to last 6 sts, ending at **. K3. Kfb. K2.

16th row: As 4th row.

17th row: K2. K2tog. yo. *K5. yo. Sl1. K2tog. pssso. yo. K4. ** K2tog. yo. Rep from * to last 4 sts, ending at **. K1. Kfb. K2.

18th row: As 2nd row.

19th row: K4. *yo. ssk. K4. yo. ssk. K3. K2tog. yo. K1. Rep from * to last 4 sts. K1. Kfb. K2.

20th row: As 4th row.

21st row: K5. *yo. ssk. K4. yo. ssk. K1. K2tog. yo. K3. Rep from * to last 4 sts. K1. Kfb. K2.

22nd row: As 2nd row.

23rd row: K6. *yo. ssk. K4. yo. K3tog. yo. K5. Rep from * to last 5 sts. yo. ssk. Kfb. K2.

24th row: As 4th row.

25th row: K4. K2tog. yo. *K1. yo. ssk. K3. K2tog. yo. K4. K2tog. yo. Rep from * to last 6 sts. K3. Kfb. K2.

26th row: As 2nd row.

27th row: K3. K2tog. yo. *K3. yo. ssk. K1. ** K2tog. yo. K4. K2tog. yo. Rep from * to last 3 sts, ending at **. Kfb. K2.

28th row: As 4th row.

29th row: K2. K2tog. yo. *K5. yo. Sl1. K2tog. pssso. yo. ** K4. K2tog. yo. Rep from * to last 3 sts, ending at **. Kfb. K2.

30th row: As 2nd row.

31st row: K4. yo. ssk. *K4. yo. ssk. ** K3. K2tog. yo. K1. yo. ssk. Rep from * to last 5 sts, ending at **. K2. Kfb. K2.

32nd row: As 4th row.

33rd row: K5. yo. ssk. *K4. yo. ssk. ** K1. K2tog. yo. K3. yo. ssk. Rep from * to last 5 sts, ending at **. K2. Kfb. K2.

34th row: As 2nd row.

35th row: K6. yo. ssk. *K4. yo. Sl1. K2tog. pssso. yo. ** K5. yo. ssk. Rep from * to last 5 sts, ending at **. K2. Kfb. K2.

36th row: As 4th row.

37th row: K4. K2tog. yo. K1. *yo. ssk. K3. K2tog. yo. K4. ** K2tog. yo. K1. Rep from * to last 3 sts, ending at **. Kfb. K2.

38th row: As 2nd row.

39th row: K3. K2tog. yo. *K3. yo. ssk. K1. K2tog. yo. K4. K2tog. yo. Rep from * to last 4 sts. K1. Kfb. K2.

40th row: As 4th row.

41st row: K2. K2tog. yo. *K5. yo. Sl1. K2tog. pssso. yo. K4. K2tog. yo. Rep from * to last 6 sts. K3. Kfb. K2.

42nd row: As 2nd row.

43rd row: K4. yo. ssk. *K4. yo. ssk. K3. K2tog. yo. K1. yo. ssk. Rep from * to last 6 sts. K3. Kfb. K2.

44th row: As 4th row.

45th row: K5. yo. ssk. *K4. yo. ssk. K1. K2tog. yo. K3. yo. ssk. Rep from * to last 6 sts. K3. Kfb. K2.

46th row: As 2nd row.

47th row: K6. yo. ssk. *K4. yo. K3tog. yo. K5. yo. ssk. Rep from * to last 7 sts. K4. Kfb. K2.

48th row: As 4th row.

49th row: K4. K2tog. yo. K1. yo. ssk. *K3. K2tog. yo. K4. K2tog. yo. K1. yo. ssk. Rep from * to last 7 sts. K4. Kfb. K2.

50th row: As 2nd row.

51st row: K3. K2tog. yo. K3. *yo. ssk. K1. K2tog. yo. ** K4. K2tog. yo. K3. Rep from * to last 5 sts, ending at **. K2. Kfb. K2.

52nd row: As 4th row.

53rd row: K2. K2tog. yo. *K5. yo. Sl1. K2tog. pssso. yo. K4. ** K2tog. yo. Rep from * to last 3 sts, ending at **. Kfb. K2.

54th row: As 2nd row.

55th row: K4. *yo. ssk. K4. yo. ssk. K3. K2tog. yo. K1. Rep from * to last 3 sts. Kfb. K2.

56th row: As 4th row.

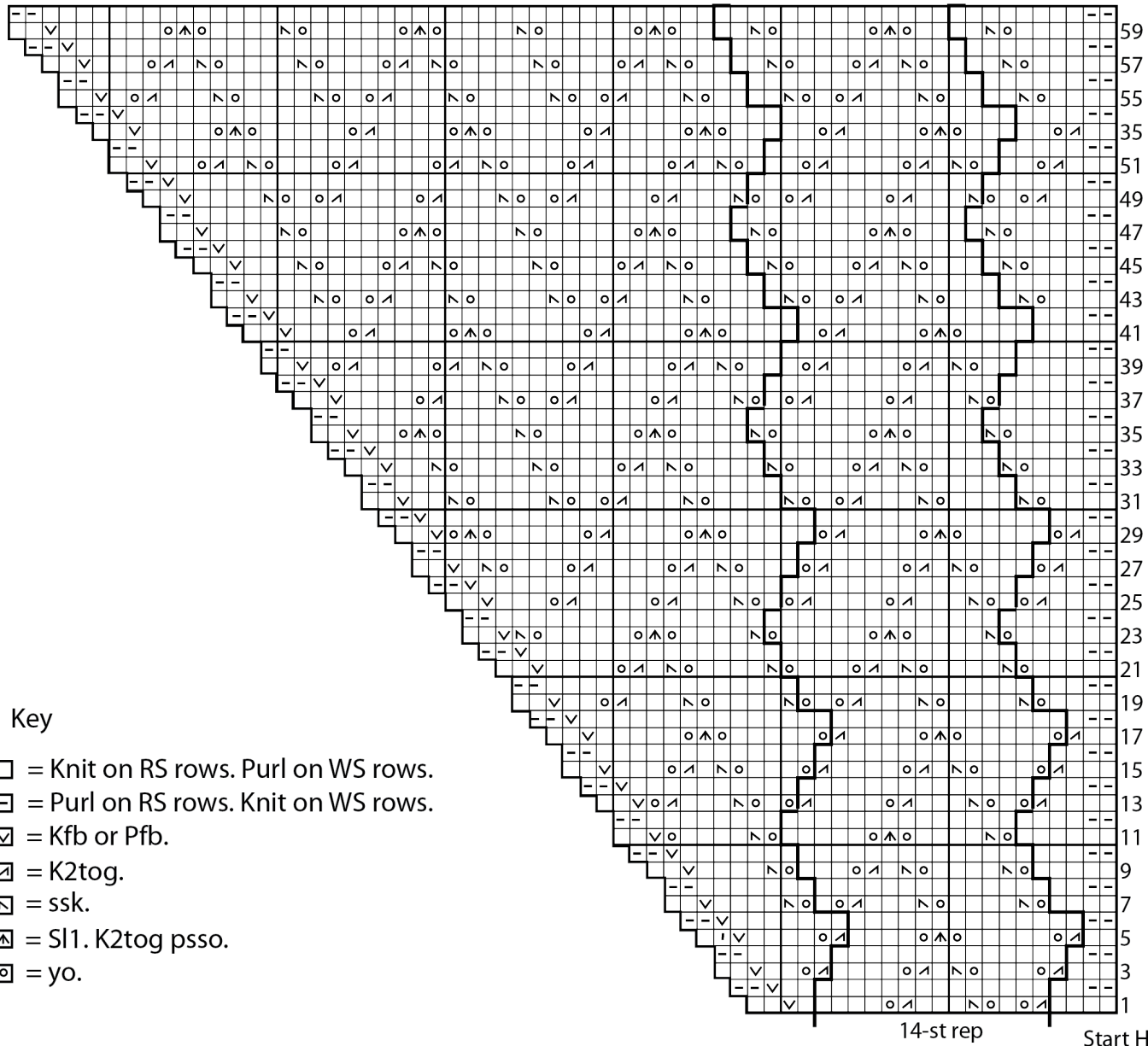
57th row: K5. *yo. ssk. K4. yo. ssk. K1. K2tog. yo. K3. Rep from * to last 3 sts. Kfb. K2.

58th row: As 2nd row.

59th row: K6. *yo. ssk. K4. yo. K3tog. yo. K5. Rep from * to last 4 sts. K1. Kfb. K2.

60th and 61st rows: Knit.

Cast off knitwise (WS).



Key

- = Knit on RS rows. Purl on WS rows.
- ◻ = Purl on RS rows. Knit on WS rows.
- ⊠ = Kfb or Pfb.
- ⊞ = K2tog.
- ⊟ = ssk.
- ⊡ = Sl1. K2tog pssso.
- ⊣ = yo.