



## MATERIALS

**Coats & Clark Dual Duty XP® All-purpose Thread:** Hummingbird Blue (5130) or to match fabric

½ yd (45.72cm) canvas, 60" (152.40cm), for body

Assorted fat quarters batiks, for scales\*

⅓ yd (30.48cm) contrast batik, for head

¾ yd (68.58cm) giant rickrack or other wide trim

2⅞ yds (2.63m) cord, ¼" (.64cm), for drawstring

(1) pair google eyes, 40mm

Textile adhesive, Seam sealant, Large safety pin

\*¼ yd (22.86cm) cuts or scraps may be substituted; each scale requires 5" x 9" (12.70cm x 22.86cm) fabric

## SEWING | SKILL LEVEL: INTERMEDIATE

### Featuring Coats & Clark Dual Duty XP® All-purpose Thread

This playful unlined tote is perfect for taking the essentials to the beach or just as a fun bag for summer. The drawstring closure keeps things inside. With so many colors of Coats & Clark Dual Duty XP® All-purpose Thread to choose from you can match any of the colorful scales on this really big fish.

### MEASUREMENTS

11" x 26" (27.94cm x 66.04cm), excluding drawstring

### CUTTING

#### From canvas, cut:

(2) body, using the pattern provided on page 3.

(2) tail, using the pattern provided on page 4.

#### From the assorted batiks, cut:

(31) pair scales, using the pattern provided on page 5.

#### From contrast batik, cut:

(2) rectangles, 12½" x 9" (31.75cm x 22.86cm)

### PREPARATION

Transfer the placement lines to the canvas body piece right sides.

Seam allowances are ¼" (.64cm).

### ASSEMBLY

#### Tail

1. With right sides together, sew the side and bottom tail seams, pivoting at the corners and leaving the narrow upper straight edge open. Trim the corner and turn the piece right side out, gently shaping the corners. Press.
2. Topstitch multiple rows around the tail sides and bottom, about ⅜" (.95cm) apart, or using the presser foot width as a guide for spacing. Set aside.



## Scales

1. Place two same color pieces right sides together and sew around each set of scales using a  $\frac{1}{8}$ " (.32cm) seam. Leave the straight edge open.
2. Turn the scales right side out and shape. Press.

## Body

1. Sew one side seam and zigzag the edges together to finish.
2. Aligning the straight edge of each scale with the drawn line, pinch a pleat in the center of each piece and pin in place, beginning with the row closest to the tail. Space the scales evenly across the line, pleating and slightly overlapping as needed to fit. Keep all the scales out of the  $\frac{1}{4}$ " (.64cm) seam allowance on the open body side. **Note:** Six scales should fit across this line.
3. Sew the upper edges of the scales in place, then zigzag over the edges.
4. Repeat adding the scales to each row, using eight, nine and eight as you work from bottom to top. If you want a fuller look, add more scales.

5. Fold the rickrack trim in half and press. Layer it over the raw edges of the uppermost scale row and stitch in place.
6. Baste the tail to the lower body edge, again allowing for  $\frac{1}{4}$ " (.64cm) seam on the open side.
7. Fold the body right sides together, tucking the scales out of the seam area, and sandwiching the tail between the layers. Sew across the tail and up the remaining side seam. Turn the fish right side out to double check that you didn't catch any scales in the seam. Turn back again and finish the seam allowances edges together with a zigzag stitch. Turn the fish right side out.

## Head

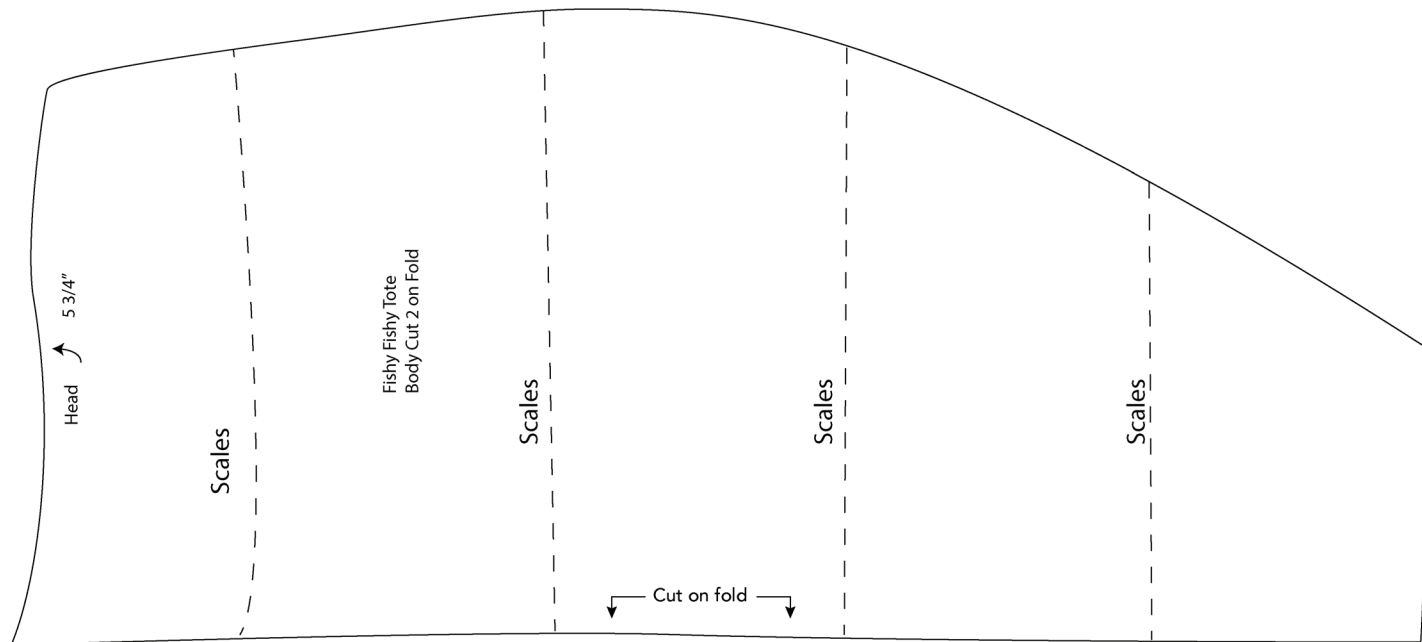
1. With right sides together, sew the short ends of the rectangles together using a  $\frac{1}{2}$ " (1.27cm) seam allowance. Stop stitching  $2\frac{1}{2}$ " (6.35cm) from each upper edge. Press the seams open, continuing through the area left open.
2. Topstitch the seam allowances in place in both open areas.

3. Press under a 1" (2.54cm) hem at both upper edges. Zigzag the hem in place, backstitch at both ends.
4. With right sides together and matching side seams, sew the head to the body. Zigzag the seam edges together and press seam allowances toward the head.

## FINISHING

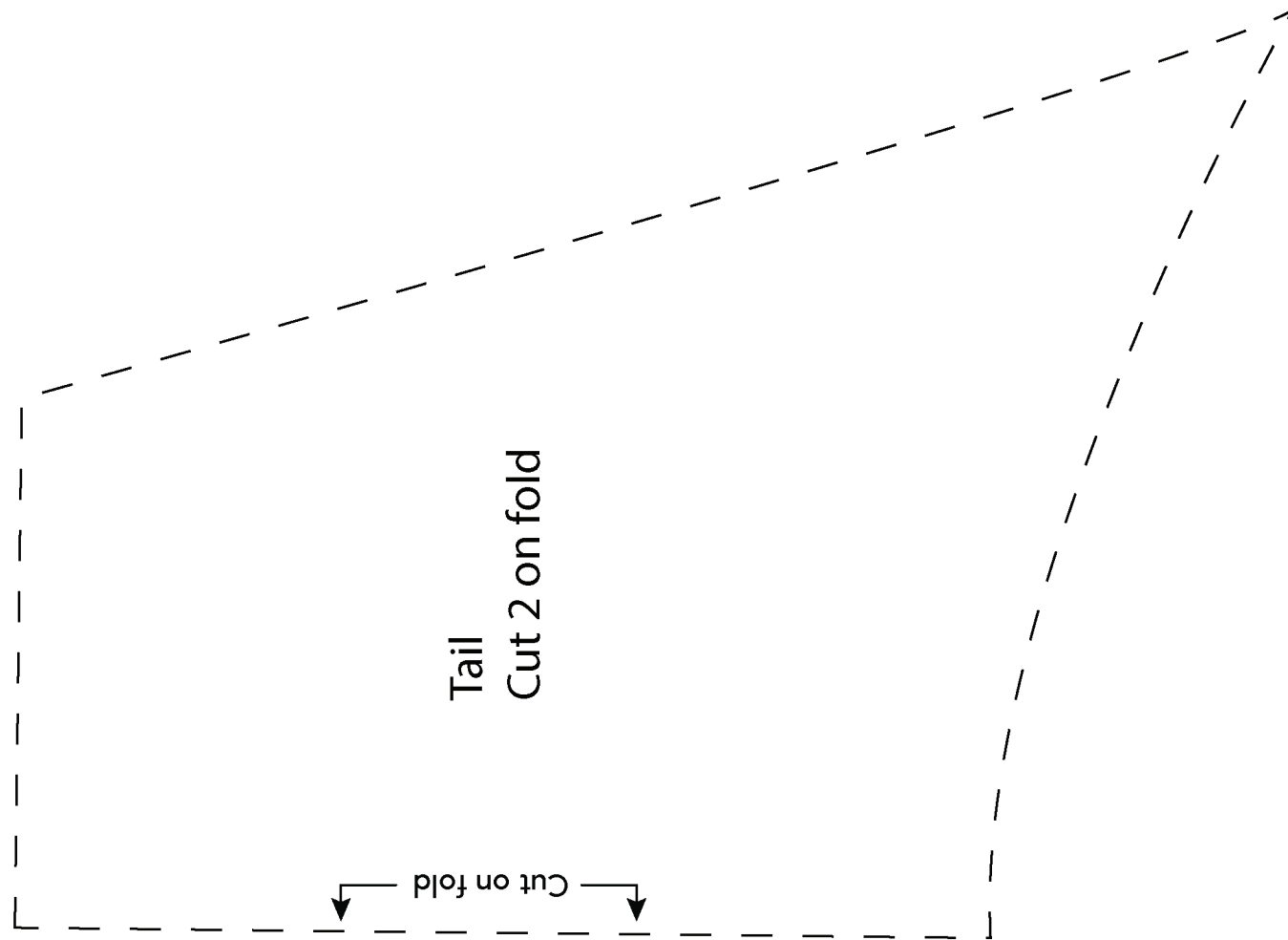
1. Cut the drawstring cord in half. Using the large safety pin, thread one string through the casing and back through the other casing. Repeat for the second drawstring portion starting at the opposite casing end.
2. Knot the drawstring ends together, trim the ends and apply seam sealant to the cord ends to prevent fraying.
3. Glue the google eye in place on each side of the fish head. Place cardboard or scrap paper under the eye section to keep the glue from going to the other side during the application process.
4. Pull up the drawstrings and you're ready to go!





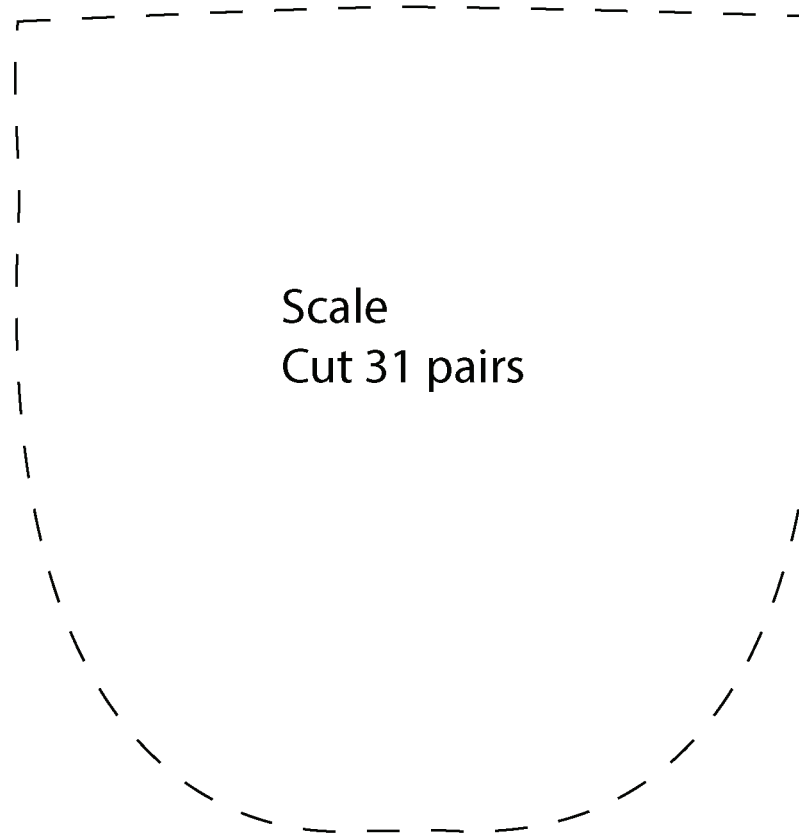
This square should measure 1" x 1" (2.54cm x 2.54cm) when printed.

**\*\*\* Measure templates before cutting to confirm printing at 200%\*\*\***



This square should measure 1" x 1" (2.54cm x 2.54cm) when printed.

**\*\*\* Measure templates before cutting to confirm printing at 100%\*\*\***



This square should  
measure 1" x 1"  
(2.54cm x 2.54cm)  
when printed.

**\*\*\* Measure templates before cutting to confirm printing at 100%\*\*\***