

Lily Sugar 'n Cream FLOWER POWER RUG TO CROCHET

MEASUREMENT

Approx 23 x 31 ins [58.5 x 78 cm]

MATERIALS

Lily Sugar'n Cream (70.9 g/2.5 oz)

Main color (MC) (1742 Hot Blue) **2 balls**

Contrast A (1712 Hot Green) **2 balls**

Contrast B (1628 Hot Orange) **2 balls**

Contrast C (1740 Hot Pink) **2 balls**

Contrast D (73 Sunshine) **1 ball**

Size 4.5 mm (U.S. 7) crochet hook **or size needed to obtain gauge.**

GAUGE

14 sc and 16 rows = 4 ins [10 cm].

INSTRUCTIONS

Motif

With color 1, ch 2.

1st rnd: 6 sc in 2nd ch from hook. Join with sl st to first sc.

2nd rnd: Ch 3 (counts as dc). 2 dc in same sp as last sl st. 3 dc in each sc around. Join with sl st to top of ch 3. 18 dc. Fasten off.

3rd rnd: Join color 2 with sl st to front loop only of any dc.

Ch 3 (counts as dc). 1 dc in same sp as last sl st. 1 dc in front loop only of next dc. 2 dc in front loop only of next dc. 5 dc for petal. **Turn.

Next row: Ch 3 (counts as dc). 1 dc in each dc of petal. Turn.

Next row: Ch 3 (counts as dc). (*Yoh and draw up a loop in next st. Yoh and draw thorough 2 loops on hook*) 3 times. *Yoh and draw through all loops on hook* – dc3tog made. 1 dc in last dc. Fasten off, leaving a long end.**

Rejoin color 2 with sl st to front loop of next unworked sc of 2nd rnd. Rep from ** to ** once.

Rep from *** to *** 4 times more. 6 petals.

4th rnd: Join color 3 with sl st to rem back loop of any dc of 2nd rnd. Ch 3. 1 dc in same sp. 2 dc in each rem back loop around. Join with sl st to top of ch 3. 36 dc.

5th rnd: Ch 3. 1 dc in same sp as last sl st. *1 dc in next dc. 2 dc in next dc. Rep from * to last dc. 1 dc in last dc. Join with sl st to top of ch 3. 54 dc.

6th rnd: Ch 3. 1 dc in next dc. *2 dc in next dc. 1 dc in each of next 3 dc. 2 dc in next dc. 1 dc in each of next 2 dc. Rep from * to last 3 dc. 1 dc in each of last 3 dc. Join with sl st to top of ch 3. 68 dc.

7th rnd: Ch 1. 1 sc in same sp as last sl st. 1 sc in each of next 5 dc. *1 hdc in each of next 3 dc. 1 dc in each of next 2 dc. 5 tr in next dc for corner. 1 dc in each of next 2 dc. 1 hdc in each of next 3 dc.** 1 sc in each of next 6 dc. Rep from * twice more, then from * to ** once. Join with sl st to first sc.

8th rnd: Ch 1. 1 sc in each st around, working 3 sc in corners. Join with sl st to first sc. Fasten off.

Using yarn ends from each petal, sew around outer edges of petals.

Motif I

Work as for Motif using MC for color 1, A for color 2 and C for color 3.

Motif II

Work as for Motif using D for color 1, C for color 2 and B for color 3.

Motif III

Work as for Motif using A for color 1, D for color 2 and MC for color 3.

Motif IV

Work as for Motif using C for color 1, MC for color 2 and A for color 3.

Motif V

Work as for Motif using C for color 1, D for color 2 and MC for color 3.

Motif VI

Work as for Motif using B for color 1, MC for color 2 and A for color 3.

Motif VII

Work as for Motif using MC for color 1, B for color 2 and C for color 3.

Motif VIII

Work as for Motif using A for color 1, C for color 2 and B for color 3.

Motif IX

Work as for Motif using D for color 1, MC for color 2 and B for color 3.

Motif X

Work as for Motif using A for color 1, D for color 2 and C for color 3.

Motif XI

Work as for Motif using MC for color 1, C for color 2 and A for color 3.

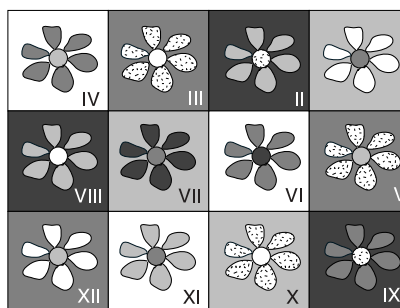
Motif XII

Work as for Motif using C for color 1, A for color 2 and MC for color 3.

Sew Motifs tog as shown in diagram.

Edging: 1st rnd: Join MC with sl st in any corner of Rug. Ch 1. 3 sc in same sp. Work sc evenly around, working 3 sc in corners. Join with sl st to first sc.

2nd rnd: Ch 1. Working from **left** to right, instead of from **right** to left as usual, work 1 reverse sc in each sc around. Join with sl st to first sc. Fasten off.



Key

- = MC
- = Contrast A
- = Contrast B
- = Contrast C
- = Contrast D