

Patons®
Classic Wool

Patons
DECOR



DIAMOND BRIGHTS

SIZES

Chest measurement

4	24 ins	[61 cm]
6	26 ins	[66 cm]
8	28 ins	[71 cm]
10	30 ins	[76 cm]

Finished chest

4	30½ ins	[77.5cm]
6	33 ins	[84 cm]
8	36 ins	[91 cm]
10	39 ins	[99 cm]

MATERIALS

Patons Classic Wool (100 g/3.5 oz)
or **Patons Décor** (100 g/3.5 oz)

Size **4** **6** **8** **10**

Main color MC (Green)

1 2 2 2 **ball(s)**

Contrast A (Blue)

2 2 2 3 **balls**

Contrast B (Orange)

1 1 1 2 **ball(s)**

Contrast C (Gold)

1 1 2 2 **ball(s)**

Contrast D (Red)

1 1 1 1 **ball**

Sizes 4 mm (U.S. 6) and 4.5 mm (U.S. 7) knitting needles **or size needed to obtain tension**. 3 st holders. Zipper 6 ins [15 cm] long.

TENSION

20 sts and 26 rows = 4 ins [10 cm] with larger needles in stocking st.

INSTRUCTIONS

The instructions are written for smallest size. If changes are necessary for larger sizes the instructions will be written thus ().

Note: When working from charts, carry yarn not in use loosely across WS of work but never over more than 5 sts. When it must pass over more than 5 sts, weave it over and under color in use on next st or at center point of sts it passes over. The colors are never twisted around one another.

BACK

With smaller needles and C, cast on 74 (**78-86-94**) sts.

****1st row:** (RS). With A, K2. *P2. K2. Rep from * to end of row.

2nd row: P2. *K2. P2. Rep from * to end of row.

Rep these 2 rows (K2. P2) ribbing for 1½ ins [4 cm], ending on a 2nd row and inc 2 (**4-4-4**) sts evenly across last row. 76 (**82-90-98**) sts.

Change to larger needles and work 2 rows in stocking st.

Next 2 rows: With D, knit. Work Chart I to end of chart, reading **knit** rows from **right** to left and **purl** rows from **left** to right, noting that 8 st rep will be worked 9 (**10-11-12**) times.**

*****Next 2 rows:** With D, knit.



ABBREVIATIONS: www.patonsyarns.com/glossary

Work Chart II to end of chart, reading **knit** rows from **right** to left and **purl** rows from **left** to right, noting that 4 st rep will be worked 19 (**20-22-24**) times.

Next 2 rows: With MC, purl.

With B, beg with a purl row, work 5 rows stocking st. With A, work 2 rows stocking st, ending with RS facing for next row.

Next 2 rows: With C, knit.

With MC, work 6 rows stocking st, ending with RS facing for next row.

Work Chart III to end of chart, reading **knit** rows from **right** to left and **purl** rows from **left** to right, noting that 2 st rep will be worked 38 (**41-45-49**) times.

With D, beg with a purl row, work 5 rows stocking st.

Next 2 rows: With MC, knit.

With C, work 4 rows stocking st, ending with RS facing for next row.***

Work in stripe pat from *** to *** as given above, until work from beg measures 16 (**17½-19½-20½**) ins [40.5 (**44.5-49.5-52**) cm] ending with RS facing for next row.

Shoulder shaping: Keeping cont of stripe pat, cast off 12 (**13-15-17**) sts beg next 2 rows then 12 (**14-15-17**) sts beg following 2 rows. Leave rem 28 (**28-30-30**) sts on a st holder.

FRONT

Work from ** to ** as given for Back.

Work in stripe pat from *** to *** as given for Back, until work from beg measures 9½ (**10¾-12¼-13**) ins [24 (**27.5-31-33**) cm] ending with RS facing for next row.

Zipper opening: Next row: Work across 38 (**41-45-49**) sts (zipper opening). **Turn.** Leave rem sts on a spare needle.

Cont in stripe pat as established from *** to ***, as given for Back, until zipper opening measures 4 ins [10 cm] ending with RS facing for next row.

Neck shaping: Next row: Pat to last 7 (**7-8-8**) sts (neck edging). **Turn.** Slip these 7 (**7-8-8**) sts on a st holder.

Dec 1 st at neck edge on next 4 rows, then every alt row to 24 (**27-30-34**) sts.

Cont in stripe pat, until work from beg measures same length as for Back before shoulder shaping ending with RS facing for next row.

Shoulder shaping: Cont in stripe pat, cast off 12 (**13-15-17**) sts beg next row. Work 1 row even. Cast off rem 12 (**14-15-17**) sts.

With RS of work facing, join appropriate color to rem 38 (**41-45-49**) sts and pat to end of row.

With A, work 1 (**1-3-3**) row(s) stocking st ending with RS facing for next row.

Next row: With A, K10. Work 1st row of Chart IV, reading row from **right** to left. With A, K11 (**14-18-22**).

Next row: With A, P11 (**14-18-22**). Work 2nd row of Chart IV, reading row from **left** to right. With A, P10. Chart is now in position.

Cont working in Chart IV until zipper opening measures 4 ins [10 cm], ending with **WS** facing for next row.

Neck shaping: Next row: Pat to last 7 (**7-8-8**) sts (neck edging). **Turn.** Slip these 7 (**7-8-8**) sts on a st holder.

Work 1 row even.

With A cont in stocking st when Chart IV is completed, dec 1 st at neck edge on next 4 rows, then every alt row to 24 (**27-30-34**) sts. Cont even until work from beg measures same length as for Back before shoulder shaping ending with **WS** facing for next row.

Shoulder shaping: Cast off 12 (**13-15-17**) sts beg next row. Work 1 row even. Cast off rem 12 (**14-15-17**) sts.

SLEEVES

With smaller needles and C, cast on 38 (**38-46-46**) sts. With A, work in (K2. P2) ribbing as given for Back for 1½ ins [4 cm], thus ending on a 2nd row.

Change to larger needles and work 2 rows in stocking st, ending with RS facing for next row.

Next row: With D, inc 1 st in next st. Knit to last 2 sts. Inc 1 st in next st. K1.

Next row: With D, knit. 40 (**40-48-48**) sts.

Work Chart V to end of chart, noting that 8 st rep will be worked 5 (**5-5-6**) times and inc 1 st each end of needle on every 2nd row from previous inc 9 times.

Work from *** to *** as given for Back, inc 1 st each end of needle on every 4th row to 70 (**78-86-88**) sts. Cont even in stripe pat until work from beg measures 10½ (**12-13½-15**) ins [26.5 (**30.5-34.5-38**) cm] ending with RS facing for next row. Cast off.

FINISHING

Pin all garment pieces to measurements. Cover with a damp cloth leaving to dry.

Collar: Sew shoulder seams. With RS of work facing, smaller needles and A, knit 7 (**7-8-8**) sts from left front st holder. Pick up and knit 14 (**14-16-18**) sts up right front neck edge. Knit across 28 (**28-30-30**) sts from back neck st holder. Pick up and knit 14 (**14-16-18**) sts down left front neck edge. Knit across 7 (**7-8-8**) sts from right front st holder. 70 (**70-78-82**) sts.

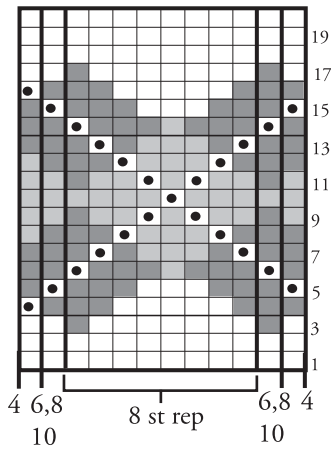
Beg with a 2nd row, work in (K2. P2) ribbing as given for Back for 2 ins [5 cm] ending with RS facing for next row. With C, rib 1 row. Cast off in ribbing.

Zipper edging: With RS of work facing, smaller needles and C, pick up and knit 30 sts down left front zipper opening from cast off edge of collar. Pick up 1 st at turning point. Pick up and knit 30 sts up right front zipper opening to cast off edge. 61 sts. Cast off (WS).

Sew zipper in position under zipper edging.

Place markers on Front and Back side edges 7 (**7¾-8½-8¾**) ins [18 (**19.5-21.5-22**) cm] down from shoulder seams. Sew in sleeves between markers. Sew side and sleeve seams.

CHART I



Back and Front:
Start Here

CHART II

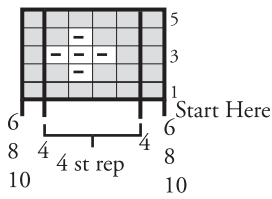
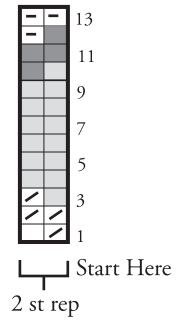


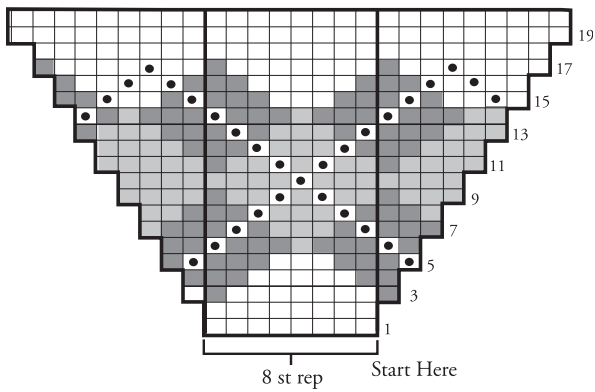
CHART III



Key

- = MC
- = Contrast A
- = Contrast B
- or = Contrast C
- = Contrast D
- = Duplicate st with C
- = Duplicate st with B

CHART V



$4\frac{3}{4} - 5\frac{1}{2}$ $5\frac{1}{2} - 5\frac{1}{2}$
 $6 - 6\frac{3}{4}$ $6 - 6$

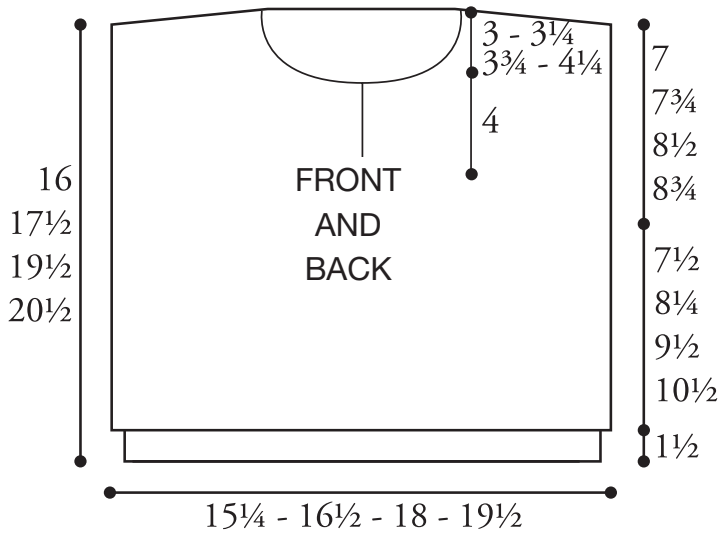
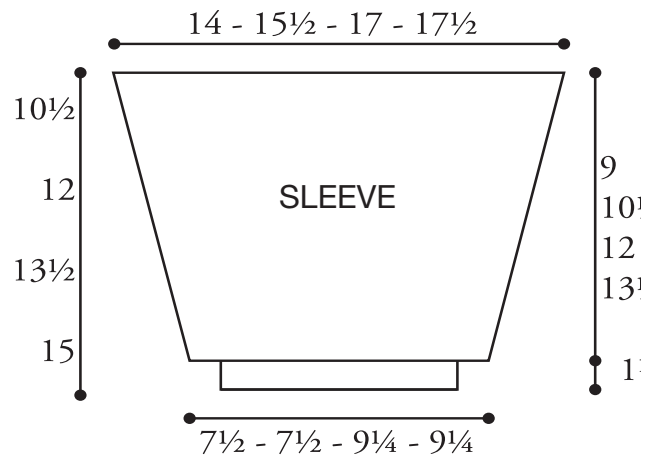
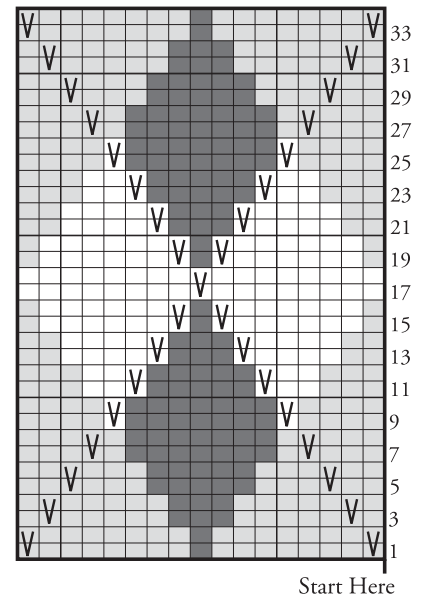


CHART IV



Patons

... a part of your life.

P.O. Box 40, Listowel ON N4W 3H3