



KNIT
SKILL LEVEL
EASY

Designed by Edie Eckman



Horseshoe Panel with Twists Square

For Knit Your Cables Afghan

Use this square for making the one-color Knit Your Cables Afghan. Follow our blog by searching RHK0502-019189M for hints on knitting each square of this afghan. Then, if you feel creative, use the stitch pattern for your own unique knit project.

What you will need:
RED HEART® Soft®: 1 ball 9388 Wheat
Susan Bates® Knitting Needles: 5 mm [US 8]
Cable needle, yarn needle
GAUGE: 19 sts = 4" (10 cm); 23 rows = 4" (10 cm) in Stockinette st (knit on right side, purl on wrong side). **CHECK YOUR GAUGE.** Use any size needles to obtain the gauge.



RED HEART® Soft®, Art. E728 available in 5 oz (141 g), 256 yd (234 m) balls

Square measures 10" (25.5 cm) square.

Special Abbreviations

1/1 LC (1 over 1 Left Cross): Slip next st to cable needle and hold in front, k1, k1 from cable needle OR bring right needle behind next st on left needle; knit into 2nd st on left needle but do not drop st off needle; knit into first st on right needle, drop both sts off needle.

1/1 RC (1 over 1 Right Cross): Slip next st to cable needle and hold in back, k1, k1 from cable needle OR knit into 2nd st on left needle but do not drop st off needle; knit into first st on left needle, drop both sts off needle.

2/2 LC (2 over 2 Left Cross): Slip next 2 sts to cable needle and hold in front, k2, k2 from cable needle.

2/2 RC (2 over 2 Right Cross): Slip next 2 sts to cable needle and hold in back, k2, k2 from cable needle.

SQUARE F

Long-tail cast on 48 sts.

Row 1 and all wrong side rows: [K4, p2] 2 times, k4, p16, k4, [p2, k4] 2 times.

Row 2: [P4, 1/1 RC] 2 times, p4, k4, 2/2 RC, 2/2 L/C, k4, p4, [1/1 LC, p4] 2 times.

Row 4: [P4, 1/1 RC] 2 times, p4, k2, 2/2 RC, k4, 2/2 LC, k2, p4, [1/1 LC, p4] 2 times.

Row 6: [P4, 1/1 RC] 2 times, p4, 2/2 RC, k8, 2/2 LC, p4, [1/1 LC, p4] 2 times.

Repeat Rows 1-6 nine more times, then work Rows 1-3 once more. Bind off in pattern on right side.

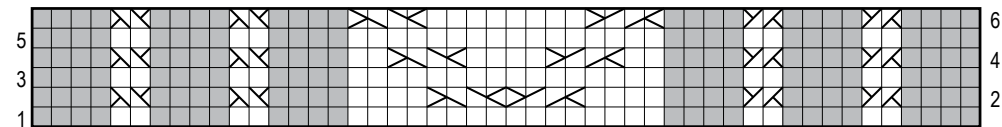
Finishing

Block piece to approximately 10" (25.5 cm) square.

Weave in ends.

ABBREVIATIONS

k = knit; p = purl; st(s) = stitch(es).



KEY

- k on RS, p on WS
- p on RS, k on WS
- k tbl
- 1/1 RC
- 1/1 LC
- 2/1 LPC
- 2/1 RPC
- 1/2 LPC
- 1/2 RPC
- 2/2 RC
- 2/2 LC
- 3/1 LPC
- 3/1 RPC
- 3/3 RC
- 3/3 LC

SHOP KIT