



MATERIALS

Bernat® Satin™ (3.5 oz/100 g; 200 yds/182 m)
Flamingo (00423) **5 balls**

Size 5 mm (U.S. 8) knitting needles **or size needed to obtain gauge.**

ABBREVIATIONS: www.yarnspirations.com/abbreviations

Approx = Approximate(ly)	have been decreased)	at a time. Pass them
Beg = Begin(ning)	Cont = Continue(ity)	back onto left-hand
Center dec (worked over 3 sts) = slip next 2 sts as if to K2tog, K1, then pass slipped sts over knit st – center of 3 sts should be on top of decrease (2 sts	K = Knit	needle, then knit
	K2tog = Knit next 2 stitches together	through back loops
	Pat = Pattern	together
	Rep = Repeat	St(s) = Stitch(es)
	RS = Right side	Tog = Together
	Ssk = Slip next 2 stitches knitwise one	WS = Wrong side
		Yo = Yarn over



MEASUREMENTS

Approx 21 x 54" [53.5 cm x 137 cm] (excluding fringe).

GAUGE

18 sts and 24 rows = 4" [10 cm] in stocking stitch.

INSTRUCTIONS

Cast on 87 sts.

Knit 3 rows (garter st), noting first row is WS.

1st row: (RS). K3. *K1. (yo. K2tog) 3 times. yo. Center dec. yo. (ssk. yo) 3 times. Rep from * to last 4 sts. K4.

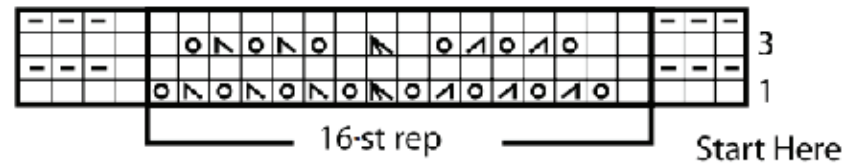
2nd row: K3. Purl to last 3 sts. K3.

3rd row: K3. *K2. (yo. K2tog) twice. yo. K1. Center dec. K1. (yo. ssk) twice. yo. K1. Rep from * to last 4 sts. K4.

4th row: As 2nd row.

These 4 rows form pat. Cont in pat until work from beg measures approx 53½" [136 cm], ending with a 3rd row. Knit 3 rows (garter st). Cast off.

Knotted Fringe: Cut lengths of yarn 36" [91.5 cm] long. Taking 3 strands tog, fold in half and knot into fringe having 11 knots across each end of Shawl. Divide each fringe in half and knot in rows as shown in diagram. Trim fringe evenly.



KEY

- ☐ = Knit on RS rows. Purl on WS rows. ☐ = ssk
- ☐ = Purl on RS rows. Knit on WS rows. ☐ = K2tog
- ⊙ = yo ☐ = Center dec

FRINGE

