



CROCHET | SKILL LEVEL: **EASY**

## ABBREVIATIONS

**Approx** = Approximately

**Beg** = Beginning

**Ch** = Chain(s)

**Dc** = Double crochet

**Pat** = Pattern

**Rep** = Repeat

**RS** = Right side

**Sc** = Single crochet

**Sl st** = Slip stitch

**Sp(s)** = Space(s)

**St(s)** = Stitch(es)

**WS** = Wrong side

## MEASUREMENT

Approx 35" [89 cm] square.

## GAUGE

13 sc and 14 rows = 4" [10 cm].

## INSTRUCTIONS

**Note:** Rows are worked in pairs in the same direction (2 rows RS/2 rows WS) – work 1 row MC. Go back to beg and work 1 row A.

With A, ch 115 loosely (multiple of 3 ch + 4).

**1st row:** (RS). With A, 1 sc in 2nd ch from hook. \*1 sc in next ch. Ch 2. Skip next 2 ch. Rep from \* to last 2 ch. 1 sc in each of last 2 ch. Pull long loop and secure to prevent from unravelling. **Do not** turn.

**2nd row:** (RS). Join MC with sl st to first sc. Ch 4 (counts as dc and ch 1). Skip next sc. \* 3 dc in next ch-2 sp. Ch 1. Skip next sc. Rep from \* to last sc. 1 dc in last sc. Pull long loop and secure to prevent from unravelling. Turn.

**3rd row:** (WS). Pick up loop of A and pull to maintain height of last row. Sl st in first dc. Ch 1. 1 sc in same sp as sl st. \*1 sc in next ch-1 sp. Ch 2. Skip next 3 dc. Rep from \* to turning ch 4. 1 sc in 4th and in 3rd ch of ch 4. Pull long loop. **Do not** turn.

**4th row:** (WS). Pick up loop of MC and pull to maintain height of last row. Sl st in first sc. Ch 4 (counts as dc and ch 1). Skip next sc. \*3 dc in next ch-2 sp. Ch 1. Skip next sc. Rep from \* to last sc. 1 dc in last sc. Pull long loop. Turn.

## MATERIALS

**Caron® Baby Cakes®** (8.5 oz/240 g; 560 yds/512 m)

**Main Color (MC)** Candy Hearts (55033)      **2 balls**

**Contrast A** White (55018)      **1 ball**

Size U.S. H/8 (5 mm) crochet hook **or size needed to obtain gauge.**

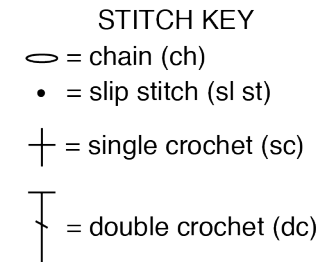
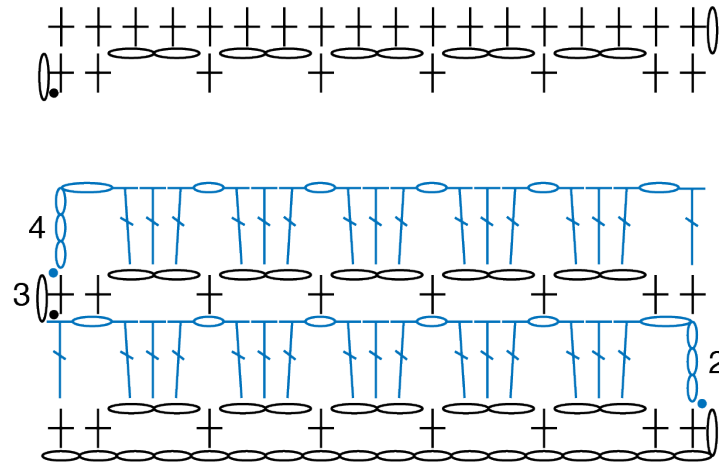
**5th row:** (RS). As 3rd row.

**6th row:** (RS). As 4th row.

Rep 3rd and 4th rows for pat until work from beg measures 34½" [87.5 cm], ending on 3rd row. Turn.

**Next row:** (RS). With A, ch 1. 1 sc in first sc. 1 sc next sc. \*2 sc in next ch-2 sp. 1 sc in next sc. Rep from \* to last sc. 1 sc in last sc. Fasten off.

**Edging:** (RS). Join A with sl st to top left corner. Ch 1. Work in sc evenly around Blanket, having 3 sc in each corner. Join with sl st to first sc. Fasten off.



REDUCED SAMPLE OF PATTERN

