



## MATERIALS

Patons® Classic Wool DK Superwash™ (1.75 oz/50 g; 125 yds/114 m)

Sizes	XS/S	M	L	XL	2/3XL	4/5XL	
Main Color (MC) Navy (12110)	6	7	8	9	10	12	balls
Contrast A Mallard Teal (12203)	3	4	4	5	5	6	balls
Contrast B Cork (12012)	2	2	3	3	4	4	balls
Contrast C Magenta (12402)	2	3	3	4	4	5	balls
Contrast D Flagstone (12011)	1	1	2	2	3	3	ball(s)

Sizes U.S. 4 (3.5 mm) and U.S. 6 (4 mm) circular knitting needles 36" [90 cm] long. Set of four sizes U.S. 4 (3.5 mm) and U.S. 6 (4 mm) double-pointed knitting needles or size needed to obtain gauge. 4 stitch holders. 2 stitch markers. 7 (7-7-8-8-8) buttons.

 KNIT | SKILL LEVEL: EXPERIENCED

## SIZES

To fit bust measurement

Extra-Small/Small	30-32" [76-81.5 cm]
Medium	34-36" [86.5-91.5 cm]
Large	38-40" [96.5-101.5 cm]
Extra-Large	42-46" [106.5-117 cm]
2/3 Extra-Large	48-54" [122-137 cm]
4/5 Extra-Large	56-62" [142-157.5 cm]

## Finished bust

Extra-Small/Small	34" [86.5 cm]
Medium	38" [96.5 cm]
Large	42" [106.5 cm]
Extra-Large	48" [122 cm]
2/3 Extra-Large	54" [137 cm]
4/5 Extra-Large	64" [162.5 cm]

## GAUGE

22 sts and 28 rows = 4" [10 cm] in stocking st with larger needles.

## INSTRUCTIONS

**Notes:** Cardigan is worked in one piece to armholes. Sleeves are worked in round separately and then joined at armholes.

When working from charts, carry colors not in use loosely across WS of work but never over more than 5 sts. When it must pass over more than 5 sts weave it over and under center point of sts it passes over. The colors are never twisted around one another.

## BODY

With A and smaller circular needle, cast on **182** (206-230-258-286-342) sts. **Do not** join. Working back and forth across needle in rows, proceed as follows:

**1st row:** (RS). \*K2. P2. Rep from \* to last 2 sts. K2.

**2nd row:** \*P2. K2. Rep from \* to last 2 sts. P2.

Rep last 2 rows (K2. P2) ribbing until work from beg measures 3" [7.5 cm], ending on a 2nd row.

**Braid: Next row:** Cast on 1 st onto left-hand needle. \*Knit into back of 2nd st on left-hand needle, then knit into front of first st on left-hand needle. Slide both sts off of needle. Place first st on right-hand needle back onto left-hand needle. Rep from \* to end of row. When all sts have been worked, pass 2nd st on right-hand needle over last st. Join B.

**Next row:** With B, purl.

**Next row:** [K11 (12-11-14-15-18). M1] 16 (16-20-18-18-18) times. Knit to end of row. 198 (222-250-276-304-360) sts.

**Next row:** Purl.

**Place Chart: 1st row:** (RS). With MC, K1 (1-1-1-2-4). Knit 1st row of Chart I, noting 13-st rep will be worked 15 (17-19-21-23-27) times, *reading row from right to left*. With MC, K2 (0-2-2-3-5).

**2nd row:** With MC, P2 (0-2-2-3-5). Purl 2nd row of Chart I 15 (17-19-21-23-27) times, *reading row from left to right*. With MC, P1 (1-1-1-2-4).

Chart I is now in position.

See Chart I on page 4.

Work Chart I in stocking st to end of chart.

With MC, beg with a purl row, cont in stocking st until work from beg measures 15 (15-15-16-16-16)" [38 (38-38-40.5-40.5-40.5) cm], ending on a purl row.

**Next row:** K52 (58-65-72-79-93). Slip last 10 (10-12-12-14-14) sts onto st holder for underarm. K104 (116-132-144-160-188). Slip last 10 (10-12-12-14-14) sts onto st holder for underarm. K42 (48-53-60-65-79). Leave all sts on a spare needle.

## SLEEVES

With A and set of four smaller double-pointed needles, cast on 52 (52-56-56-60-68) sts. Divide sts onto 3 needles. Join to work in rnd, placing marker on first st.

**1st rnd:** \*K2. P2. Rep from \* around.

Rep last rnd (K2. P2) ribbing for 2½" [6 cm].

**Braid: Next rnd:** Cast on 1 st onto left-hand needle. \*Knit into back of 2nd st on left-hand needle, then knit into front of first st on left-hand needle. Slide both sts off of needle. Place first st on right-hand needle back onto left-hand needle. Rep from \* to end of rnd. When all sts have been worked, pass 2nd st on right-hand needle over last st. Break A.

Change to set of larger double-pointed needles and MC.

**Next rnd:** With MC, knit.

**Next rnd:** Knit, inc 4 sts evenly around. 56 (56-60-60-64-72) sts.

Knit Chart II to end of chart, *reading rows from right to left* and noting 4-st rep will be worked 14 (14-15-15-16-18) times. See Chart II on page 4.

**Next rnd:** With D, K1. M1. Knit to last st. M1. K1. 58 (58-62-62-66-74) sts.

Knit Chart III (multiple of 4 sts + 2) to end of chart, *reading rows from right to left* and noting 4-st rep will be worked 14 (14-15-15-16-18) times. Chart III is shown on page 4.

With MC only, knit in rnds, inc 1 st at beg and end of next rnd (as established) and every following 6th (4th-4th-4th-4th-4th) rnd to 82 (68-84-96-104-110) sts.

**Sizes M, L and XL only:** Inc 1 st at each end of following every 6th rnd to (88-94-100) sts.

**All sizes:** Knit even in rnds until Sleeve from beg measures 14½ (14½-14½-14½-13½-13½)" [37 (37-37-37-34.5-34.5) cm].

**Next rnd:** K82 (88-94-100-104-110). Slip last 5 (5-6-6-7-7) sts and first 5 (5-6-6-7-7) sts onto a st holder for underarm. Break yarn. Leave rem 72 (78-82-88-90-96) sts on a st holder.

## Yoke

**1st row:** With RS row of Body facing, larger circular needle and MC, K42 (48-53-60-65-79) of Right Front. K72 (78-82-88-90-96) of Sleeve. K94 (106-120-132-146-174) of Back. K72 (78-82-88-90-96) of Sleeve. K42 (48-53-60-65-79) of Left

Front. 322 (358-390-428-456-524) sts.

**2nd row:** Purl.

**3rd row:** Knit, inc 6 (2-2-4-0-4) sts evenly around. 328 (360-392-432-456-528) sts.

**4th row:** Purl.

Work Chart IV to end of chart, *reading knit rows from right to left and purl rows from left to right* and noting 8-st rep will be worked 41 (45-49-54-57-66) times. Chart IV is shown on page 4.

**Size XS/S only: Next row:** (WS). With A, P80. P2tog. (P84. P2tog) twice. Purl to end of row. 325 sts.

**Next row:** \*K3. K2tog. Rep from \* to end of row. 260 sts.

**Sizes M, L, XL, 2/3XL and 4/5XL only:**

**Next row:** (WS). With A, purl.

**Next row:** With A, K(5-16-11-13-19). \*K2tog. K3. Rep from \* to last (5-16-11-13-19) sts. K(5-16-11-13-19). (290-320-350-370-430) sts.

**All sizes: Next row:** (WS). With A, purl.

Work Chart V to end of chart, *reading knit rows from right to left and purl rows from left to right* and noting 10-st rep will be worked 26 (29-32-35-37-43) times. Chart V is shown on page 4.

**Next row:** (RS). With A, knit, dec 4 (2-0-6-2-6) sts evenly across row. 256 (288-320-344-368-424) sts.

**Next row:** Purl.

Work Chart IV to end of chart, noting 8-st rep will be worked 32 (36-40-43-46-53) times.

See Chart IV on page 4.

With MC only, proceed as follows:

**Next row:** (RS). \*K2. K2tog. Rep from \* to end of row. 192 (216-240-258-276-318) sts.

Beg with a purl row, work 3 (3-5-7-7-7) rows even.

**Next row:** (RS). \*K1. K2tog. Rep from \* to end of row. 128 (144-160-172-184-212) sts.

Beg with a purl row, work 3 rows even.

**Next row:** (RS). K0 (0-10-5-0-7). \*K6 (6-3-4-6-4). K2tog. Rep from \* to last 0 (0-10-5-0-7) sts. K0 (0-10-5-0-7). 112 (126-132-145-161-179) sts.

**Next row:** Purl.

**Shape neck: 1st row:** (RS). K75 (84-88-96-104-115). W&T. Leave rem sts unworked.

**2nd row:** P38 (42-44-47-47-51). W&T. Leave rem sts unworked.

**3rd row:** K39 (43-45-48-48-52). W&T. Leave rem sts unworked.

**4th row:** P40 (44-46-49-49-53). W&T. Leave rem sts unworked.

**5th row:** K41 (45-47-50-50-54). W&T. Leave rem sts unworked.

**Next row:** Purl, dec 2 (2-2-3-3-1) st(s) evenly across row. 110 (124-130-142-158-178) sts.

**Braid: Next row:** (RS). With A, cast on 1 st onto left-hand needle. \*Knit into back of 2nd st on left-hand needle, then knit into front of first st on left-hand needle. Slide both sts off of needle. Place first st on right-hand needle back onto left-hand needle. Rep from \* to end of row. When all sts have been worked, pass 2nd st on right-hand needle over last st.

**Next row:** \*P2. K2. Rep from \* to last 2 sts. P2.

**Next row:** \*K2. P2. Rep from \* to last 2 sts. K2.

Rep last 2 rows of (K2. P2) ribbing twice more. Cast off loosely in ribbing (WS).

**Buttonhole Band:** With RS facing, smaller circular needle and A, pick up and knit 134 (134-138-146-150-150) sts evenly along Right Front between cast on edge of Body and cast off edge of neckband.

**1st to 3rd rows:** Beg on a 2nd row, work 3 rows in (K2. P2) ribbing as given for Body.

**4th row:** Rib across 6 sts. \*Cast off 2 sts. Rib across 18 (18-19-17-18-18) sts. Rep from \* 5 (5-5-6-6-6) times more. Cast off 2 sts. Pat to end of row.

**5th row:** Rib, casting on 2 sts over cast off sts.

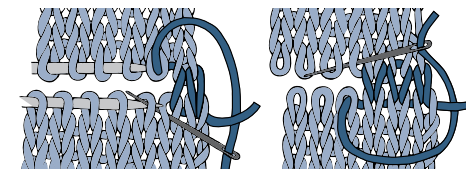
Work a further 3 rows in ribbing.

Cast off loosely in ribbing.

**Button Band:** Work as for Buttonhole Band, picking up sts along Left Front edge and omitting all references to buttonholes.

Sew buttons to correspond to buttonholes. Graft sts at underarms.

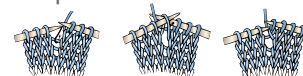
### Grafting Diagram



### ABBREVIATIONS:

**Alt** = Alternate(ing)  
**Approx** = Approximate(ly)  
**Beg** = Beginning  
**Cont** = Continue(ity)  
**Dec** = Decrease(ing)  
**Inc** = Increase(ing)  
**K** = Knit  
**K2tog** = Knit next 2 stitches together

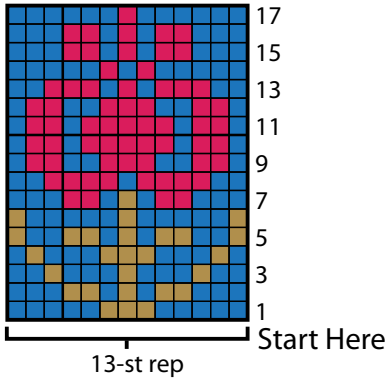
**M1** = Make 1 stitch by picking up horizontal loop lying before next stitch and knitting into back of loop



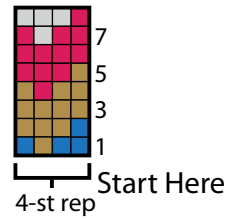
**P** = Purl  
**Pat** = Pattern  
**P2tog** = Purl next 2 stitches together  
**Rem** = Remain(ing)  
**Rep** = Repeat  
**Rnd(s)** = Round(s)  
**RS** = Right side

**St(s)** = Stitch(es)  
**W&T** = On RS rows: bring yarn to front of work. Slip next stitch purlwise. Bring yarn to back of work. Slip stitch back onto left-hand needle. **Turn.** On WS rows: bring yarn to back of work. Slip next stitch purlwise. Bring yarn to front of work. Slip stitch back onto left-hand needle. **Turn.**  
**WS** = Wrong side

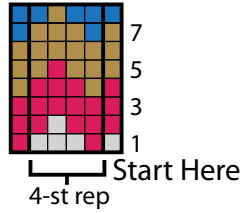
**Chart I**



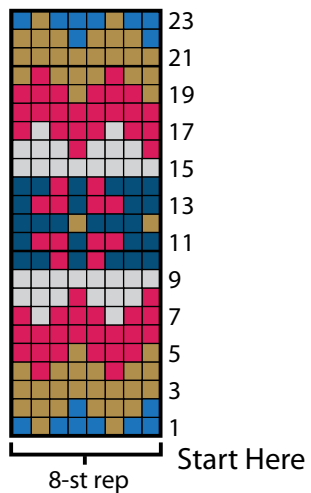
**Chart II**



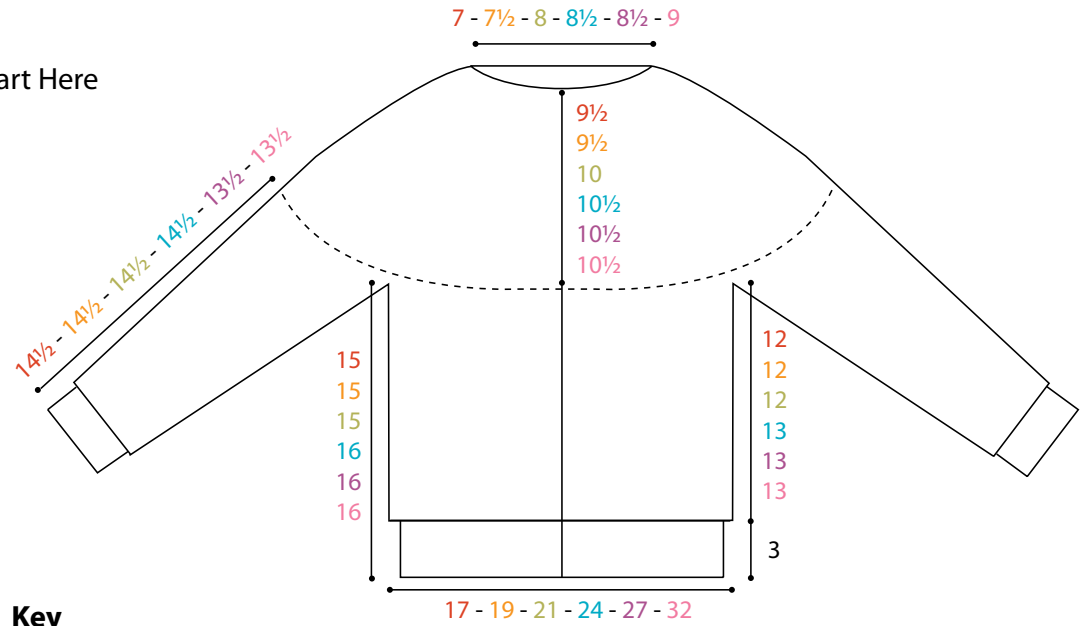
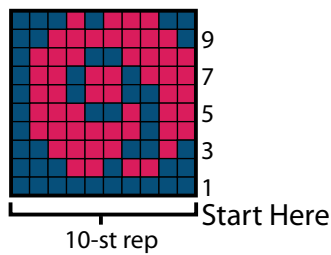
**Chart III**



**Chart IV**



**Chart V**



**Key**

- = Main Color (MC)
- = Contrast A
- = Contrast B
- = Contrast C
- = Contrast D