



OWL DISHCLOTH | KNIT



KNIT | SKILL LEVEL: INTERMEDIATE

MEASUREMENTS

Approx 9" [23 cm] wide x 8" [20.5 cm] long.

GAUGE

20 sts and 26 rows = 4" [10 cm] in stocking st.

MATERIALS

Lily® Sugar'n Cream® (2.5 oz/70.9 g; 120 yds/109 m)

Main Color (MC) Ecru (00004) **1 ball or 77 yds/70 m**

Contrast A Wine (00015) **1 ball or 29 yds/26 m**

Contrast B Country Red (01530) **1 ball or 44 yds/40 m**

Contrast C Tangerine (01699) **1 ball or 33 yds/30 m**

Size U.S. 7 (4.5 mm) knitting needles **or size needed to obtain gauge.**

INSTRUCTIONS

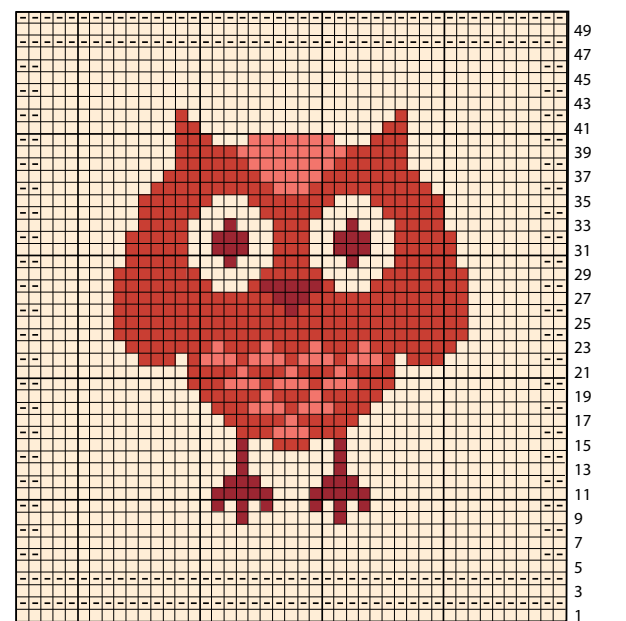
Note: When working from Chart, wind small balls of the colors to be used, one for each separate area of color in the design. When changing colors, wind the 2 colors around each other where they meet, on WS, to avoid a hole.

With MC, cast on 45 sts.

Work rows 1 to 50 of Chart, reading **RS** rows from **right** to left and **WS** rows from **left** to right.

With MC, cast off knitwise (RS).

Chart



Key

- = With MC, knit on RS rows. Purl on WS rows.
- = With B, knit on RS rows. Purl on WS rows.
- = With MC, purl on RS rows. Knit on WS rows.
- = With C, knit on RS rows. Purl on WS rows.
- = With A, knit on RS rows. Purl on WS rows.

Start Here

ABBREVIATIONS:

Approx = Approximately

St(s) = Stitch(es)

RS = Right side

WS = Wrong side