



KNIT | SKILL LEVEL: INTERMEDIATE

## ABBREVIATIONS

**Alt** = Alternate(ing)

**Approx** = Approximately

**Beg** = Begin(ning)

**C6B** = Slip next 3 stitches onto cable needle and leave at back of work. K3, then K3 from cable needle [Video is here](#)

**K** = Knit

**K2tog** = Knit next 2 stitches together

**Pat** = Pattern

**Rep** = Repeat

**RS** = Right side

**Sl1** = Slip next stitch knitwise

**Ssk** = Slip next 2 stitches knitwise one at a time. Pass them back onto left-hand needle, then knit through back loops together

**St(s)** = Stitch(es)

**WS** = Wrong side

**Yo** = Yarn over

## MEASUREMENTS

Approx 52" x 60" [132 x 152.5 cm].

## GAUGE

16 sts and 22 rows = 4" [10 cm] in stocking st.

## INSTRUCTIONS

Cast on 196 sts (multiple of 36 sts + 16). **Do not** join. Working back and forth across needle in rows, proceed as follows:  
Knit 5 rows, noting 1st row is WS.

Cont in pat as follows: See Chart on page 2.

**1st row:** (RS). K5. \*C6B. (yo. ssk) 6 times. C6B. (K2tog. yo) 6 times. Rep from \* to last 11 sts. C6B. K5.

**2nd and alt rows:** K5. Purl to last 5 sts. K5.

**3rd row:** K5. \*K7. (yo. ssk) 5 times. K8. (K2tog. yo) 5 times. K1. Rep from \* to last 11 sts. K11.

**5th row:** K5. \*K6. (yo. ssk) 6 times. K6. (K2tog. yo) 6 times. Rep from \* to last 11 sts. K6. K5.

**7th rows:** As 3rd row.

**8th row:** As 2nd row.

## MATERIALS

**Red Heart® Super Saver®** (7 oz/198 g; 364 yds/333 m)

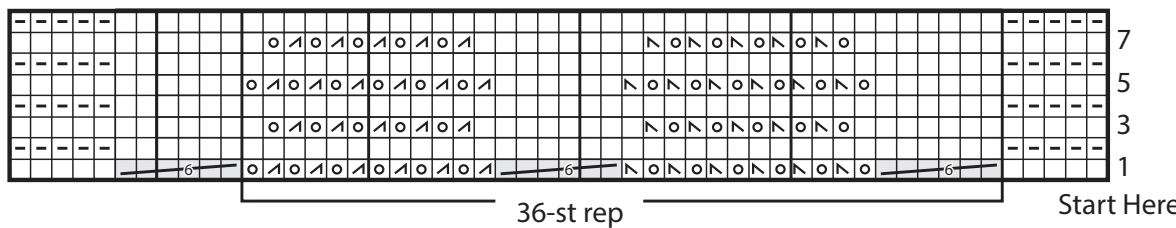
Turqua (0512)

**6 balls or 2200 yds/2002 m**

Size U.S. 9 (5.5 mm) circular knitting needle 29" [73.5 cm] long **or size needed to obtain gauge.** Cable needle.

Rep last 8 rows for Pat until work from beg measures approx 59" [150 cm], ending on a 1st row.  
 Knit 6 rows (garter st).  
 Cast off knitwise (WS).

Chart



Key

- = Knit on RS rows. Purl on WS rows.
- = Purl on RS rows. Knit on WS rows.
- = K2tog
- = ssk
- = yo
- = C6B

