



CROCHET
SKILL LEVEL
INTERMEDIATE

Designed by Diane McKee

What you will need:

RED HEART® Soft®: 6 (7, 8, 8, 9)
balls 4614 Black A, 1 ball 4601 Off
White B

Susan Bates® Crochet hook:
6mm [US J-10]

Yarn needle

GAUGE: 13 sts = 4" (10 cm);
16 rows = 4" (10 cm) in single
crochet (sc). **CHECK YOUR GAUGE.**
Use any size hook to obtain the
gauge.



RED HEART® Soft®,
Art. E728 available in
solid color 5 oz (141 g),
256 yd (234 m), print 4 oz (113 g),
204 yd (187 m), and heather 4oz
(113 g), 212 yd (194m) balls



Skull Sweater

*Here's a great graphic look
to wear during the Halloween season.
It's definitely cool in a spooky way and
lets you join the party in style.*

Directions are for size **Small**. Changes for
sizes **Medium, Large, X-Large, and XX-Large**
are in parentheses.

To Fit Chest: 36 (40, 44, 46, 52)" (91.5 (101.5,
112, 117, 132) cm)

Finished Chest: 42 (46, 50, 54, 58)" (106.5
(117, 127, 137, 147.5) cm)

Finished Length: 26 (26½, 27, 27½, 27½)"
(66 (67.5, 68.5, 70, 70) cm)

Special Stitches

Bpdc (back post double crochet) = Yarn over,
insert hook from back side of work to front
and to back again around the post of indicated
stitch; yarn over and pull up a loop (3 loops on
hook), [yarn over and draw through 2 loops on
hook] twice.

Fpdc (Front post double crochet) = Yarn over,
insert hook from front side of work to back
and to front again around post of indicated
stitch; yarn over and pull up a loop (3 loops on
hook), [yarn over and draw through 2 loops on
hook] twice.

sc2tog (single crochet 2 stitches together) =
[Insert hook in next stitch, yarn over and pull
up a loop] twice, yarn over and draw through
all 3 loops on hook.

Special Technique

surface slip st = Hold yarn on wrong side of
piece, insert hook from right side to wrong
side and draw up a loop (1 loop on hook), *a
short distance from previous insertion point,
insert hook from right side to wrong side and
draw up a loop through fabric and through
loop on hook; repeat from * as desired.

Notes

1. Sweater is made from four pieces: Back,
front, and two sleeves.
2. Skull is worked on front by changing colors
following Skull Chart. Each square of chart
represents one single crochet stitch worked
in the indicated color. Read right side rows
of chart from right to left and wrong side
rows from left to right.
3. To change color, work last stitch of old
color to last yarn over. Yarn over with new
color and draw through all loops on hook to
complete stitch. Proceed with new color.
4. Use separate small balls of yarn for each
section of color. Do not carry colors not in
use across wrong side of work nor under
stitches.

BACK

With **A**, ch 69 (75, 83, 89, 95).

Foundation Row (right side): Sc in 2nd ch
from hook and in each ch across, turn—68
(74, 82, 88, 94) sc.

Row 1: Ch 1, sc in each st across, turn.
Repeat last row until piece measures about
16½" (42 cm) from beginning; end with a
wrong side row.

Shape Armholes

Row 1 (right side): Slip st in first 9 (11, 14, 16,
17) sts, ch 1, sc in each st across to last 9 (11,
14, 16, 17) sts; leave remaining sts unworked,
turn—50 (52, 54, 56, 60) sc.

Row 2: Ch 1, sc in each st across, turn.
Repeat last row until armholes measure about
8½ (9, 9½, 10, 10)" (21.5 (23, 24, 25.5, 25.5)
cm); end with a wrong side row.

Continued...

SHOP KIT



Shape Neck and First Shoulder

Row 1 (right side): Ch 1, sc in next 14 (15, 16, 17, 19) sts for first shoulder; leave remaining sts unworked for neck and second shoulder, turn—14 (15, 16, 17, 19) sts.

Row 2: Ch 1, sc2tog, sc in each st across, turn—13 (14, 15, 16, 18) sts.

Row 3: Ch 1, sc in each st to last 2 sts, sc2tog, turn—12 (13, 14, 15, 17) sts.

Row 4: Ch 1, sc in each st across, turn. Repeat last row until armhole measures about 9½ (10, 10½, 11, 11)” (24 (25.5, 26.5, 28, 28) cm).
Fasten off.

Shape Neck and Second Shoulder

Row 1 (right side): With right side facing, skip next 22 unworked sts following first shoulder, join yarn with sc in next st, sc in each st across for second shoulder, turn—14 (15, 16, 17, 19) sts.

Row 2: Ch 1, sc in each st to last 2 sts, sc2tog, turn—13 (14, 15, 16, 18) sts.

Row 3: Ch 1, sc2tog, sc in each st across, turn—12 (13, 14, 15, 17) sts.

Row 4: Ch 1, sc in each st across, turn. Repeat last row until armhole measures about 9½ (10, 10½, 11, 11)” (24 (25.5, 26.5, 28, 28) cm).
Fasten off.

FRONT

Work same as back until piece measures about 8½ (9, 9½, 10, 10)” (21.5 (23, 24, 25.5, 25.5) cm) from beginning; end with a wrong side row.

Begin Skull Chart

Row 1 (right side): Ch 1, sc in first 19 (22, 26, 29, 32) sts, work Row 1 of Skull Chart over

next 30 sts, sc in last 19 (22, 26, 29, 32) sts, turn.

Rows 2–32 (30, 28, 26, 26): Ch 1, sc in first 19 (22, 26, 29, 32) sts, work next row of Skull Chart over next 30 sts, sc in last 19 (22, 26, 29, 32) sts, turn.

Shape Armholes

Row 1 (right side): Slip st in first 9 (11, 14, 16, 17) sts, ch 1, sc in next 10 (11, 12, 13, 15) sts, work next row of Skull Chart over next 30 sts, sc in next 10 (11, 12, 13, 15) sts; leave remaining sts unworked, turn—50 (52, 54, 56, 60) sc.

Row 2: Ch 1, sc in first 10 (11, 12, 13, 15) sts, work next row of Skull Chart over next 30 sts, sc in last 10 (11, 12, 13, 15) sts, turn. Repeat last row until all rows of Skull Chart have been completed.

Continue with **A** only.

Next Row: Ch 1, sc in each st across, turn. Repeat last row until armholes measure about 6 (6½, 7, 7½, 7½)” (15 (16.5, 18, 19, 19) cm); end with a wrong side row.

Shape Neck and First Shoulder

Row 1 (right side): Ch 1, sc in next 16 (17, 18, 19, 21) sts for first shoulder; leave remaining sts unworked for neck and second shoulder, turn—16 (17, 18, 19, 21) sts.

Row 2: Ch 1, sc2tog, sc in each st across, turn—15 (16, 17, 18, 20) sts.

Row 3: Ch 1, sc in each st to last 2 sts, sc2tog, turn—14 (15, 16, 17, 19) sts.

Rows 4 and 5: Repeat Rows 2 and 3—12 (13, 14, 15, 17) sts.

Row 6: Ch 1, sc in each st across, turn. Repeat last row until armhole measures about 9½ (10, 10½, 11, 11)” (24 (25.5, 26.5, 28, 28) cm).

Fasten off.

Shape Neck and Second Shoulder

Row 1 (right side): With right side facing, skip next 18 unworked sts following first shoulder, join yarn with sc in next st, sc in each st across for second shoulder, turn—16 (17, 18, 19, 21) sts.

Row 2: Ch 1, sc in each st to last 2 sts, sc2tog, turn—15 (16, 17, 18, 20) sts.

Row 3: Ch 1, sc2tog, sc in each st across, turn—14 (15, 16, 17, 19) sts.

Rows 4 and 5: Repeat Rows 2 and 3—12 (13, 14, 15, 17) sts.

Row 6: Ch 1, sc in each st across, turn. Repeat last row until armhole measures about 9½ (10, 10½, 11, 11)” (24 (25.5, 26.5, 28, 28) cm).
Fasten off.

SLEEVES (make 2)

Ch 34 (34, 36, 36, 36).

Foundation Row (right side): Sc in 2nd ch from hook and in each ch across, turn—33 (33, 35, 35, 35) sc.

Row 1: Ch 1, sc in each st across, turn.

Row 2 (increase row): Ch 1, 2 sc in first st, sc in each st across to last st, 2 sc in last st, turn—35 (35, 37, 37, 37) sc.

Rows 3–5: Ch 1, sc in each st across, turn.

Row 6 (increase row): Repeat Row 2—37 (37, 39, 39, 39) sc.

Rows 7–10 (22, 58, 42, 42): Repeat last 4 rows 1 (4, 13, 9, 9) more times—39 (45, 65, 57, 57) sc.

Next 4 (4, 4, 2, 2) Rows: Ch 1, sc in each st across, turn.

Next Row (increase row): Repeat Row 2—41 (47, 67, 59, 59) sc.

Repeat last 5 (5, 5, 3, 3) rows 11 (9, 1, 7, 7) more times—63 (65, 69, 73, 73) sts.

Next Row: Ch 1, sc in each st across, turn. Repeat last row until piece measures about 22½ (23½, 23½, 23½, 23½)” (57 (59.5, 59.5, 59.5, 59.5) cm) from beginning.
Fasten off.

FINISHING

With **A**, work surface slip st around eyes and nose. With **A**, embroider straight stitch teeth following Skull Chart. With **B**, work surface slip st around skull.

Sew shoulder seams. Sew side and sleeve seams.

Neckband

Round 1 (right side): With right side facing, join yarn with slip st in neck edge at shoulder seam to work across back neck edge, ch 3 (counts as first dc), work 79 more dc evenly spaced around; join with slip st in top of beginning ch—80 dc.

Round 2: Ch 2 (does not count as a st), FPdc around beginning ch of previous round, BPdc around next st, *FPdc around next st, BPdc around next st; repeat from * around; join with slip st in top of first post st.

Round 3: Ch 2, FPdc around same st as joining, BPdc around next st, *FPdc around next st, BPdc around next st; repeat from * around; join with slip st in top of first post st. Repeat Round 3 until neckband measures about 1½” (4 cm).

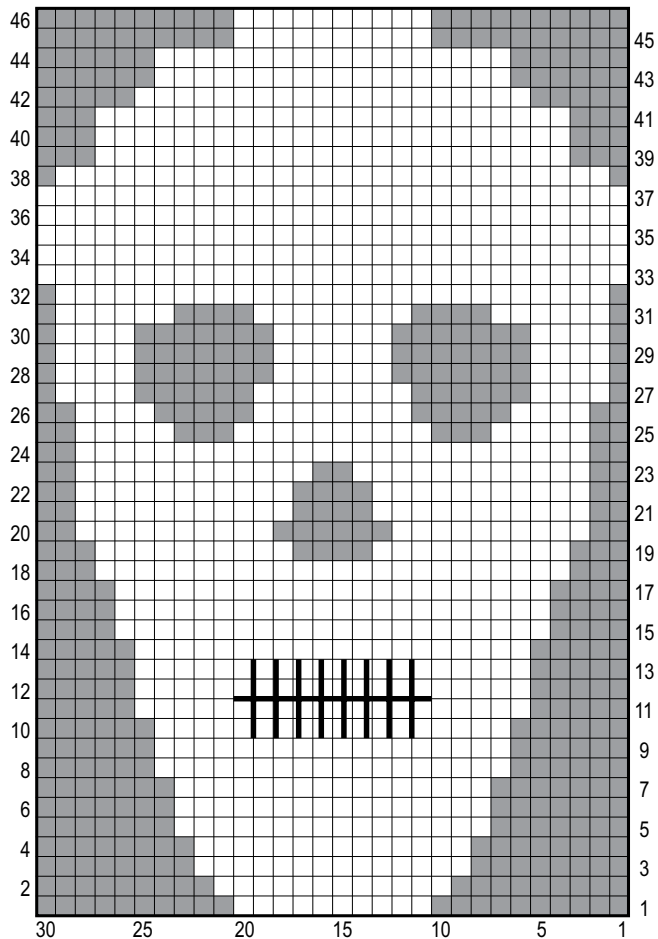
Last Round: Slip st in each st around.
Fasten off.

ABBREVIATIONS

A and B = Color A and Color B; **ch** = chain; **dc** = double crochet; **sc** = single crochet; **st(s)** = stitch (es); * = repeat whatever follows the * as indicated.

See schematics and chart on next page...

Skull Chart



Key

- A - 4614 Black
- B - 4601 Off White
- Straight stitch embroidery

