

quilt-inspired throw

Add some old-fashioned charm to your décor with this cozy crochet throw in a classic log cabin design.

By Stitchworx



SKILL LEVEL: intermediate

finished measurements

Approx 49" x 49"/124.5 x 124.5cm

gauge

25 sts (13 sc and 12 ch-1 sps) and 22 rows to 6"/15cm over sc pat st using size J/10 (6mm) crochet hook.

Remember to check gauge for best results!

how to make a gauge swatch

Ch 26.

Row 1 (right side) Sc in 4th ch from hook (counts as 1 sc, ch 1 and skip 1 ch), *ch 1, skip next ch, sc in next ch; repeat from * across—25 sts (13 sc and 12 ch-1 sps). Turn.

Row 2 Ch 2 (counts as 1 sc and ch 1), sc in next ch-1 sp, *ch 1, sc in next ch-1 sp; repeat from * across. Turn. Repeat row 2 twenty times more. Fasten off. Swatch should measure 6" x 6"/15 x 15cm. If necessary, adjust hook size to obtain correct gauge.

notes

1 The afghan begins with a square in the center.

2 The square is surrounded by eight bands.

3 Each band consists of four strips.

4 With the exception of the first strip of the first band, you will turn the piece one-quarter counterclockwise to work along the next edge for the next strip.

5 As you follow the directions, also refer to the diagram for the placement of colors and strips.

6 Note that the arrows shown on the diagram indicate which direction the rows are worked for each strip.

7 To join yarn with a sc, make a slipknot and place on hook. Insert hook into st, yarn over and draw up a loop, yarn over and draw through 2 loops on hook.

CENTER SQUARE

With A, ch 26.

Row 1 (right side) Sc in 4th ch from hook (counts as

1 sc, ch 1 and skip 1 ch), *ch 1, skip next ch, sc in next ch; repeat from * across—25 sts (13 sc and 12 ch-1 sps). Turn.

Rows 2–22 Ch 2 (counts as 1 sc and ch 1), sc in next ch-1 sp, *ch 1, sc in next ch-1 sp; repeat from * across. Turn. Fasten off.

FIRST COLOR BAND

strip I

With right side of A square facing, join B with a sl st in upper right corner, ch 12.

Row 1 (right side) Sc in 4th ch from hook (counts as 1 sc, ch 1 and skip 1 ch), [ch 1, skip next ch, sc in next ch] 4 times, continue across top edge of square as follows: *ch 1, sc in next ch-1 sp; repeat from * across. Turn.

Rows 2–10 Ch 2 (counts as 1 sc and ch 1), sc in next ch-1 sp, *ch 1, sc in next ch-1 sp; repeat from * across. Turn. Fasten off. Turn work one-quarter counterclockwise.

strip II

With right side facing, join C with a sl st in upper right corner of strip B.

Row 1 (right side) Ch 2 (counts as 1 sc and ch 1), skip first row, sc in next row, *ch 1, skip next row, sc in next row; repeat from * twice more across side edge of strip B, then repeat from * to * 12 times across side edge of square A. Turn.

Rows 2–10 Work as for First Color Band strip I.

strip III

With right side facing, join D with a sl st in upper right corner of strip C.

Row 1 (right side) Ch 2 (counts as 1 sc and ch 1), skip first row, sc in next row, *ch 1, skip next row, sc in next row; repeat from * twice more across side edge of strip C, then repeat from * to * 12 times across bottom edge of square A. Turn.

Rows 2–10 Work as for first color band strip I.

strip IV

With right side facing, join E with a sl st in upper right corner of strip D.

Row 1 (right side) Ch 2 (counts as 1 sc and ch 1),

what you'll need

YARN

RED HEART *Super Saver*, 7oz/198g skeins, each approx 364yd/333m (acrylic). 1 skein each in:

- #313 Aran (A)
- #631 Light Sage (B)
- #661 Frosty Green (C)
- #330 Linen (D)
- #365 Coffee (E)
- #633 Dark Sage (F)
- #360 Café (G)
- #316 Soft White (H)

CROCHET HOOK

- Size J/10 (6mm) crochet hook or any size to obtain the correct gauge

NOTIONS

- Yarn needle

THE YARN



Super Saver

Abbreviations used in this pattern

ch chain(s)

pat pattern

sc single crochet

sl st slip st

sp(s) space(s)

st(s) stitch(es)

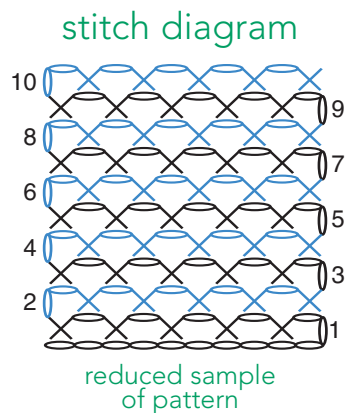
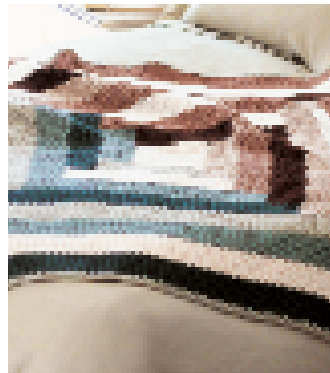
* Repeat directions following * as many times as indicated.

[] Repeat the directions inside brackets as many times as indicated.



PHOTOGRAPHY BY ROSE CALLAHAN; HAIR & MAKEUP BY GIGI GOMMERS FOR FORD ARTISTS—NYC

quilt-inspired throw



from * across 4 times more. Turn.

Rows 2–10 Work as for first color band strip I.

strip II

With right side facing, join B with a sl st in upper right corner of strip F.

Row 1 (right side) Ch 2 (counts as 1 sc and ch 1), skip first row, sc in next row, *ch 1, skip next row, sc in next row; repeat from * 3 times more across side edge of strip F. Continue across top edge of strip C as follows: *ch 1, sc in next ch-1 sp; repeat from * across 56 times more. Continue across side edge of strip H as follows: *ch 1, skip next row, sc in next row; repeat from * across 4 times more. Turn.

Rows 2–10 Work as for first color band strip I.

strip III

With right side facing, join G with a sl st in upper right corner of strip B.

Row 1 (right side) Ch 2 (counts as 1 sc and ch 1), skip first row, sc in next row, *ch 1, skip next row, sc in next row; repeat from * 3 times more across side edge of strip B. Continue across top edge of strip H as follows: *ch 1, sc in next ch-1 sp; repeat from * across 56 times more. Continue across side edge of strip D as follows: *ch 1, skip next row, sc in next row; repeat from * across 4 times more. Turn.

Rows 2–10 Work as for first color band strip I.

strip IV

With right side facing, join E with a sl st in upper right corner of strip G.

Row 1 (right side) Ch 2 (counts as 1 sc and ch 1), skip first row, sc in next row, *ch 1, skip next row, sc in next row; repeat from * 3 times more across side edge of strip G. Continue across top edge of strip D as follows: *ch 1, sc in next ch-1 sp; repeat from * across 56 times more. Continue across side edge of strip C as follows: *ch 1, skip next row, sc in next row; repeat from * across 4 times more, join row to bottom edge of strip A with a sl st. Turn.

Rows 2–10 Work as for first color band strip IV, but join rows to bottom edge of strip A.

SEVENTH COLOR BAND

strip I

With right side of work facing, join C with a sl st in upper right corner of strip F, ch 12.

Row 1 (right side) Sc in 4th ch from hook (counts as

1 sc, ch 1 and skip 1 ch), [ch 1, skip next ch, sc in next ch] 4 times. Continue across top edge of strip F as follows: *ch 1, sc in next ch-1 sp; repeat from * across 66 times more. Continue across side edge of strip B as follows: *ch 1, skip next row, sc in next row; repeat from * across 4 times more. Turn.

Rows 2–10 Work as for first color band strip I.

strip II

With right side facing, join A with a sl st in upper right corner of strip C.

Row 1 (right side) Ch 2 (counts as 1 sc and ch 1), skip first row, sc in next row, *ch 1, skip next row, sc in next row; repeat from * 3 times more across side edge of strip C. Continue across top edge of strip B as follows: *ch 1, sc in next ch-1 sp; repeat from * across 66 times more. Continue across side edge of strip G as follows: *ch 1, skip next row, sc in next row; repeat from * across 4 times more. Turn.

Rows 2–10 Work as for first color band strip I.

strip III

With right side facing, join D with a sl st in upper right corner of strip A.

Row 1 (right side) Ch 2 (counts as 1 sc and ch 1), skip first row, sc in next row, *ch 1, skip next row, sc in next row; repeat from * 3 times more across side edge of strip A. Continue across top edge of strip G as follows: *ch 1, sc in next ch-1 sp; repeat from * across 66 times more. Continue across side edge of strip E as follows: *ch 1, skip next row, sc in next row; repeat from * across 4 times more. Turn.

Rows 2–10 Work as for first color band strip I.

strip IV

With right side facing, join H with a sl st in upper right corner of strip D.

Row 1 (right side) Ch 2 (counts as 1 sc and ch 1), skip first row, sc in next row, *ch 1, skip next row, sc in next row; repeat from * 3 times more across side edge of strip D. Continue across top edge of strip E as follows: *ch 1, sc in next ch-1 sp; repeat from * across 66 times more. Continue across side edge of strip A as follows: *ch 1, skip next row, sc in next row; repeat from * across 4 times more, join row to bottom edge of strip F with a sl st. Turn.

Rows 2–10 Work as for first color band strip IV, but join rows to bottom edge of strip F.

EIGHTH COLOR BAND

strip I

With right side of work facing, join B with a sl st in upper right corner of strip C, ch 12.

Row 1 (right side) Sc in 4th ch from hook (counts as 1 sc, ch 1 and skip 1 ch), [ch 1, skip next ch, sc in next ch] 4 times. Continue across top edge of strip C as follows: *ch 1, sc in next ch-1 sp; repeat from * across 76 times more. Continue across side edge of strip A as follows: *ch 1, skip next row, sc in next row; repeat from * across 4 times more. Turn.

Rows 2–10 Work as for first color band strip I.

strip II

With right side facing, join F with a sl st in upper right corner of strip B.

Row 1 (right side) Ch 2 (counts as 1 sc and ch 1), skip first row, sc in next row, *ch 1, skip next row, sc in next row; repeat from * 3 times more across side edge of strip B. Continue across top edge of strip A as follows: *ch 1, sc in next ch-1 sp; repeat from * across 76 times more. Continue across side edge of strip D as follows: *ch 1, skip next row, sc in next row;

repeat from * across 4 times more. Turn.

Rows 2–10 Work as for first color band strip I.

strip III

With right side facing, join E with a sl st in upper right corner of strip F.

Row 1 (right side) Ch 2 (counts as 1 sc and ch 1), skip first row, sc in next row, *ch 1, skip next row, sc in next row; repeat from * 3 times more across side edge of strip F. Continue across top edge of strip D as follows: *ch 1, sc in next ch-1 sp; repeat from * across 76 times more. Continue across side edge of strip H as follows: *ch 1, skip next row, sc in next row; repeat from * across 4 times more. Turn.

Rows 2–10 Work as for first color band strip I.

strip IV

With right side facing, join G with a sl st in upper right corner of strip E.

Row 1 (right side) Ch 2 (counts as 1 sc and ch 1), skip first row, sc in next row, *ch 1, skip next row, sc in next row; repeat from * 3 times more across side edge of strip G. Continue across top edge of strip H as follows: *ch 1, sc

in next ch-1 sp; repeat from * across 76 times more. Continue across side edge of strip C as follows: *ch 1, skip next row, sc in next row; repeat from * across 4 times more, join row to bottom edge of strip B with a sl st. Turn.

Rows 2–10 Work as for first color band strip IV, but join rows to bottom edge of strip B.

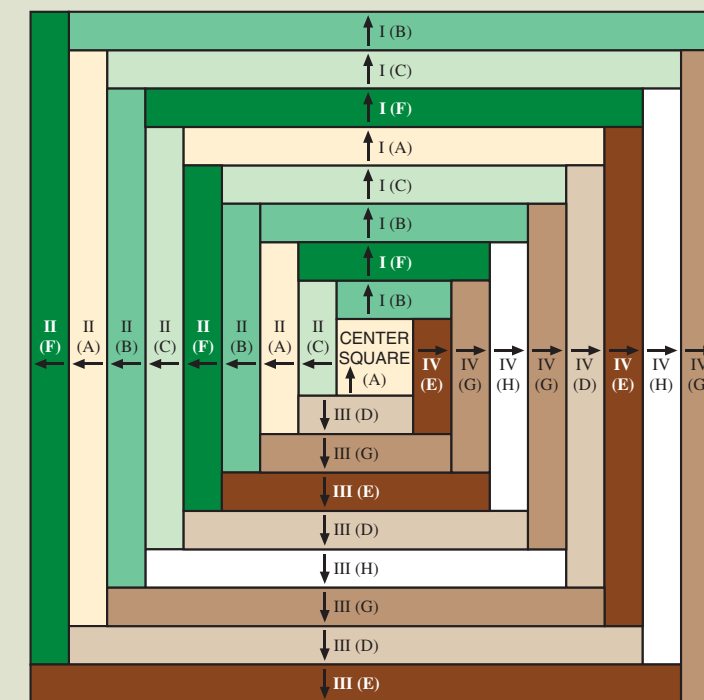
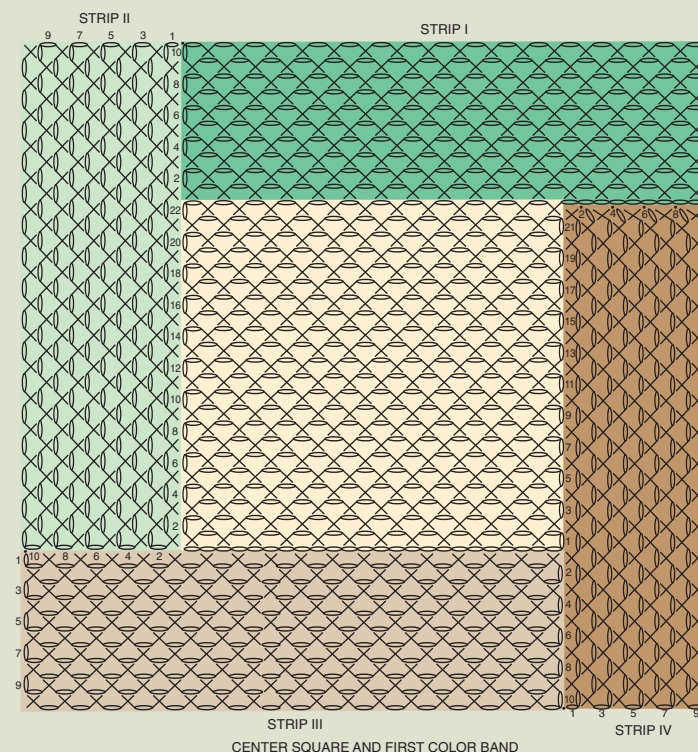
finishing

Weave in all loose ends.

edging

Round 1 (right side) With right side facing, join C with a sc in ch-1 sp in center of any side edge, *ch 1, sc in next ch-1 sp; repeat from * around, working (sc, ch 1, sc) in each corner, join round with a sl st in first sc.

Round 2 Sl st in first ch-1 sp, ch 1, sc in same ch-1 sp, *ch 1, sc in next ch-1 sp; repeat from * around, working (sc, ch 1, sc) in each corner ch-1 sp, join round with a sl st in first sc. Fasten off. Weave in ends. □



construction diagram