



## MATERIALS

Caron® Simply Soft® (170 g/6.1 oz; 288 m/315 yds)  
**Contrast A** Bone (9703) **1 ball**  
**Contrast B** Dark Sage (9707) **1 ball**  
**Contrast C** Robin's Egg (9780) **1 ball**  
**Contrast D** Off White (9702) **1 ball**  
**Contrast E** Autumn Red (9730) **1 ball**  
**Contrast F** Chocolate (9750) **1 ball**

Size U.S. 9 (5.5 mm) knitting needles **or size to obtain gauge**. Bobbins Yarn needle  
**For I-cord:** Pair of size U.S. 8 (5 mm) double-pointed knitting needles. ½ yard fabric for lining. Sewing needle and thread.

 KNIT | SKILL LEVEL: INTERMEDIATE

## MEASUREMENTS

Approx 7½" [19 cm] wide x 18" [45.5 cm] from upper edge to heel.

## GAUGE

In Stockinette stitch, 17 sts and 22 rows = 4" [10 cm].

## INSTRUCTIONS

### SPECIAL TECHNIQUES

**Fair Isle (Stranded) Technique:** Carry color not in use loosely across WS of work. Wrap colors if carried over more than 3 or 4 sts to avoid long floats.

**Short Row Shaping:** Work the number of sts indicated in the instructions, wrp-t; return to starting point.

Continue to work progressively longer (OR... shorter...) rows as indicated in the instructions; work wraps together with wrapped sts as you come to them, as follows: Insert right-hand needle into wrap at base of wrapped st from beneath, then bring right-hand needle up and into st on left-hand needle ready to work the st; knit (or purl) wrap and st together—this prevents a hole from forming where Short Row ended.

**Hint:** If it's difficult to work wrap and st together as given above, slip wrapped st to right-hand needle, insert left-hand needle into wrap (from bottom to top), place wrap on left-hand needle, return wrapped st to left-hand needle and knit (or purl) wrap and wrapped st together.

**Wrap and Turn (wrp-t):** (RS) Yarn forward (to the purl position), slip next st to right-hand needle, yarn back (to the knit position), return slipped st, (which is now wrapped), to left-hand needle; turn, leaving remaining sts unworked.

**I-Cord:** Using a double pointed needle, cast on, the number of sts indicated in instructions; DO NOT TURN. \*Slide sts to the opposite end of the needle and knit them, pulling yarn firmly behind sts; repeat from \* to desired length. After a few rows, you will see that you are knitting a tiny tube; give it a gentle tug now and then to adjust any loose sts. Bind off all sts, leaving a 12" tail for finishing.

### EMBROIDERY STITCHES

**Stem Stitch (F) (see diagram on page 3)** Bring needle from WS to RS at center of a stitch, \*insert needle into upper right-hand edge of next st to right, then out again at center of stitch; repeat from \*, making regular, slightly slanted stitches.

## Lazy Daisy Flowers (E)

Beginning each st at the same point, work six or seven Lazy Daisy loops to form flower (see diagrams on page 3).

## French Knot (D)

Bring needle from WS to RS, wrap yarn around needle one or two times and hold it in place as you pull needle through (see diagram on page 3).

## STITCHES USED

**Stockinette stitch** (St st)

**Garter stitch** (Garter st)

**Fair Isle** (see chart)

**Lace Edging** (multiple of 11 sts - also see Chart)

**Row 1 (RS):** Knit.

**Row 2:** Knit.

**Rows 3, 5, 7 and 9:** \*K2tog, k3, yo, k1, yo, k3, k2tog; rep from \* across.

**Rows 4, 6, 8 and 10:** Purl.

Work Rows 1 – 10 for Lace Edging.

## NOTES

1. Stocking is worked in one piece, then seamed.
2. Cuff is worked with RS facing, then WS of Cuff becomes RS for remainder of Stocking.
3. Fair Isle Chart may be worked from right to left or left to right as needed.

## STOCKING

Using E, cast on 66 sts.

Begin Lace Edging; work even for 10 rows, end with a WS row.

## Cuff

Change to B and St st; work even until piece measures 6" from Lace Edging, end with a WS row.

(RS) Change to A and knit 1 row, decreasing 4 sts evenly across last row—62 sts remain.

**Note:** WS of Cuff now becomes RS of Leg.

## Leg

(RS) Change to St st; cont with A, work even for 16 rows, end with a WS row.

(RS) Begin Fair Isle Chart (see page 3); work Rows 1 – 11 once, changing colors as indicated.

(WS) Cont with A only in St st, work 22 rows.

(WS) Begin Fair Isle Chart; work Rows 1 – 11 once, changing colors as indicated.

(RS) Cont with A only in St st, work even for 4 rows, end with a WS row.

## Heel

(RS) Change to E; k31, leaving remaining sts unworked.

Begin Short Row shaping, working across to last 2 sts, wrp-t for each row until 15 sts remain.

Reverse the Short Row shaping by working across 1 more st each row, working wraps together with wrapped st, until all sts are being worked – 31 sts; end with a WS row.

## Foot

(RS) Change to A; cont in St st, work across all sts—62 sts.

Work even for 9 rows.

(RS) Begin Fair Isle Chart; work Rows 1 – 11 once, changing colors as indicated.

(WS) Cont with A only in St st, work even for 9 rows.

## Toe

(RS) Change to E, work the toe shaping as for heel.

Bind off sts, or leave live and graft together.

## FINISHING

### Embroidery

Using diagrams and photo as a guide, work Embroidery as shown.

### Assembly

Sew side seam. Turn Cuff to RS; neatly sew the Cuff to the Stocking along the first and last row of B, as shown (if desired).

Using yarn needle, weave in ends.

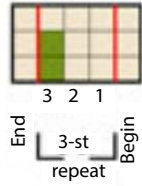
### Hanger

Using B, work a 14" piece of I-cord, using Embellish-knit machine or double pointed needles. Fold cord in half and tack to WS of stocking at upper edge of Cuff fold.

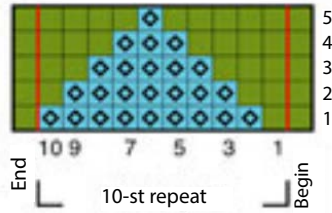
### Lining (optional)

Using Stocking as a pattern, draw the shape on a piece of paper, adding ½" on all sides for seam. Note: Lining should end at the edge of the folded cuff on the WS. With RS's together, using sewing needle and matching thread, sew seam. Insert lining into Stocking and neatly sew upper edge of lining along edge of Cuff where it is joined to Stocking.

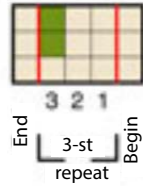
**FAIR ISLE  
CHART A**



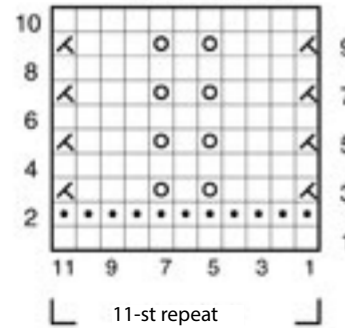
**FAIR ISLE  
CHART B**



**FAIR ISLE  
CHART C**



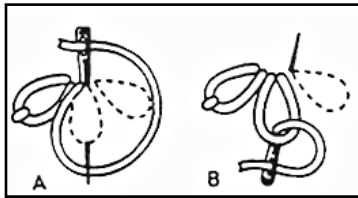
**LACE CHART  
Autumn Red (E)**



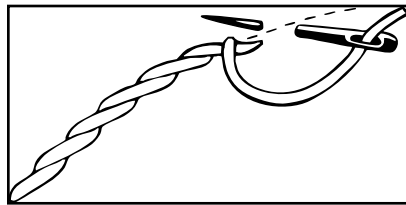
**KEY**

- Knit on RS, purl on WS
- Purl on RS, Knit on WS
- Yo
- K2tog

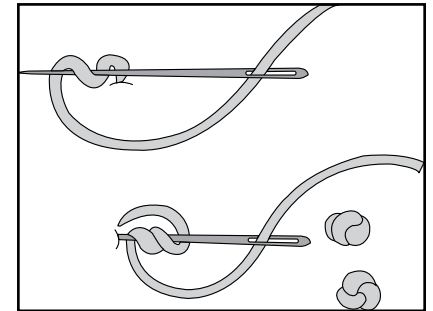
**LAZY DAISY**



**Stem Stitch**



**French Knot**



**Lazy Daisy Flower  
Autumn Red**



- KEY**
- Lazy Daisy
  - Stem Stitch  
Charcoal Heather
  - French Knot  
Off White

