



## CASUAL PULLOVER (ADULT)

### SIZES

#### To fit bust measurement

<b>Small</b>	34 ins [86.5 cm]
<b>Medium</b>	36 ins [91.5 cm]
<b>Large</b>	38 ins [96.5 cm]
<b>Extra-Large</b>	40 ins [101.5 cm]

#### Finished bust

<b>Small</b>	40 ins [101.5 cm]
<b>Medium</b>	42 ins [106.5 cm]
<b>Large</b>	44 ins [112 cm]
<b>Extra-Large</b>	46 ins [117 cm]

### MATERIALS

Patons Astra (50 g/1.75 oz)

<b>Sizes</b>	<b>S</b>	<b>M</b>	<b>L</b>	<b>XL</b>
<b>Main Color (MC)</b> (Brown)	7	8	8	8 balls
<b>Contrast A</b> (White)	4	4	4	5 balls
<b>Contrast B</b> (Dk Beige)	4	4	5	5 balls
<b>Contrast C</b> (Lt Beige)	1	1	1	1 ball

Sizes 3.75 mm (U.S. 5) and 4 mm (U.S. 6) knitting needles. Size 3.75 mm (U.S. 5) circular needle 24 ins [60 cm] long for Collar **or size needed to obtain tension**. 2 st holders.

### TENSION

24 sts and 28 rows = 4 ins [10 cm] with larger needles in fair isle pat.

### Instructions

*The instructions are written for smallest size. If changes are necessary for larger sizes the instructions will be written thus ( ).*

**Note:** When working from charts, carry yarn not in use loosely across WS of work, but never over more than 5 sts. When it must pass over more than 5 sts, weave it over and under color in use on next st or at center of sts it passes over.

### BACK

\*\*With B and smaller needles, cast on 107 (111-117-121) sts.

Change to MC and proceed as follows:

**1st row:** (RS). \*K1. P1. Rep from \* to last st. K1.

This row forms seed st pat.

Work 5 rows more in seed st pat, inc 13 (15-15-17) sts evenly across last row. 120 (126-132-138) sts.

Change to larger needles and proceed as follows:

Work 1st and 2nd rows of Chart I reading knit rows from **right** to left and purl rows from **left** to right, noting the 12 st rep will be worked 10 (10-11-11) times. Rep these 2 rows until work from beg measures 10½ ins [29 cm], ending with RS facing for next row. Beg with 3rd row, work Chart I to end of chart.

**Armhole shaping:** Cont rep 29th and 30th rows of Chart I, cast off 8 sts beg next 2 rows. 104 (110-116-122) sts.\*\*

Cont even in pat until armhole measures 8 (8½-8½-9) ins [20 (21.5-21.5-23) cm], ending with RS facing for next row. Cast off.



ABBREVIATIONS: [www.patonsyarns.com/glossary](http://www.patonsyarns.com/glossary)

## FRONT

Work from \*\* to \*\* as given for Back.

Work 6 rows even in pat.

**Next row:** (RS). Keeping cont of pat, dec 1 st at center of row. 103 (109-115-121) sts.

**Placket Placement: Next row:** (WS). Pat 46 (49-52-55) sts. With B, P11. Join 2nd ball of A, and pat to end of row.

**Next row:** (RS). Pat 46 (49-52-55) sts. With B, (P1. K1) 5 times. P1. Pat to end of row.

**Next 5 rows:** Pat 46 (49-52-55) sts. With B, work in seed st across next 11 sts. Pat to end of row.

**Placket Opening: Next row:** (RS). Pat 46 (49-52-55) sts. With B, work 5 sts seed st. **Turn.** Leave rem sts on a spare needle. Pat across 51 (54-57-60) sts working 5 sts with B in seed st, as established, until Placket opening measures 3½ (3½-3½-4) ins [9 (9-9-10) cm], ending with RS facing for next row.

**Next row:** Pat to last 6 sts. With B, work seed st to end of row.

**Next row:** With B, work 6 sts seed st. Pat to end of row.

**Next row:** Pat to last 7 sts. With B, work seed st to end of row.

**Next row:** With B, work 7 sts seed st. Pat to end of row.

Cont in this manner, adding 1 st to width of seed st placket every alt row, until seed st placket is 16 (18-18-19) sts wide.

Cont even in pat until armhole measures 8 (8½-8½-9) ins [20 (21.5-21.5-23) cm], ending with RS facing for next row.

**Next row:** Cast off 35 (36-39-41) sts for shoulder. Leave rem 16 (18-18-19) sts for Collar on a st holder.

With RS facing, join B to rem sts on spare needle. Cast off 1 st. Pat to end of row.

Cont across 51 (54-57-60) sts in pat working 5 sts with B in seed st, as established, until Placket opening measures 3½ (3½-3½-4) ins [9 (9-9-10) cm], ending with RS facing for next row.

**Next row:** With B, work 6 sts seed st. Pat to end of row.

**Next row:** Pat to last 6 sts. With B, work 6 sts seed st.

**Next row:** With B, work 7 sts seed st. Pat to end of row.

**Next row:** Pat to last 7 sts. With B, work 7 sts seed st.

Cont in this manner, adding 1 st to width of seed st placket every alt row, until seed st placket is 16 (18-18-19) sts wide.

Cont even in pat until armhole measures 8 (8½-8½-9) ins [20 (21.5-21.5-23) cm], ending with WS facing for next row.

**Next row:** Cast off 35 (36-39-41) sts for shoulder. Leave rem 16 (18-18-19) sts for Collar on a st holder.

## SLEEVES

With B and smaller needles, cast on 45 (51-57-57) sts. Change to MC and work 6 rows seed st as given for Back, inc 5 sts evenly across last row. 50 (56-62-62) sts.

Change to larger needles and proceed as follows:

Work 1st and 2nd rows of Chart II in stocking st, reading knit rows from **right** to left and purl rows from **left** to right, noting the 4 st rep will be worked 12 (14-15-15) times. Rows 1 and 2 form pat.

Cont in pat, inc 1 st at each end of needle on 3rd row, then every following 4th row to 62 (68-70-70) sts, then on every following 6th row to 80 (86-92-92) sts, taking inc sts into pat.

Work Chart III in stocking st to end of chart, reading knit rows from **right** to left and purl rows from **left** to right, noting the 12 st rep will be worked 6 (7-7-7) times and inc 1 st each end of needle on 5th and every following 6th row until there are 88 (94-100-100) sts.

Rep 27th and 28th rows of Chart III for rem pat, inc 1 st each end of needle on next and every following 6th row to 94 (100-106-112) sts, taking inc sts into pat.

Cont even in pat until work from beg measures 19½ (20-20½-21) ins [49.5 (51-52-53.5) cm], ending with RS facing for next row. Cast off.

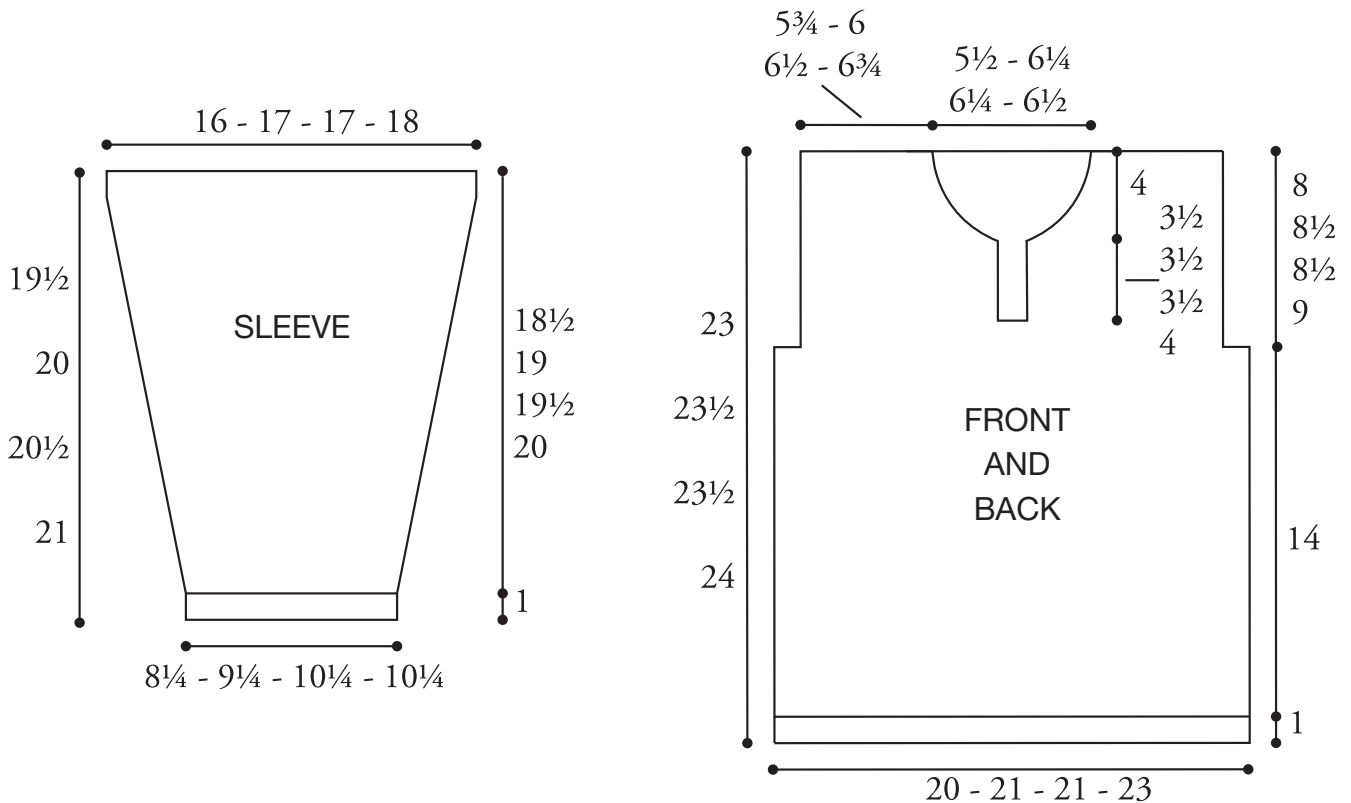
**FINISHING**

Pin garment pieces to measurements. Cover with a damp cloth leaving to dry.

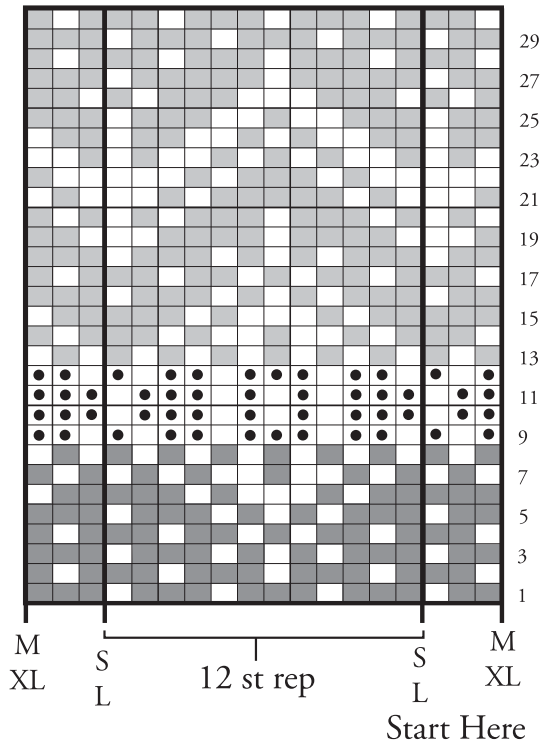
**Collar:** Sew shoulder seams. With RS of work facing, B and circular needle, work seed st across 16 (18-18-19) sts on Right Front st holder. Pick up and knit 29 (33-33-35) sts across Back neck edge. Work seed st pat across 16 (18-18-19) sts on Left Front st holder. 61 (69-69-73) sts.

Cont in seed st until Collar from beg measures 3½ ins [9 cm] ending with RS facing for next row. Cast off in pat.

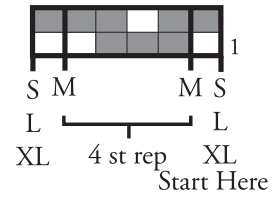
Place markers 1½ ins [2 cm] down from cast-off edge at each side of sleeve. Sew in sleeves, placing rows above markers between cast-off sts at Front and Back armholes to form square armholes. Sew side and sleeve seams.



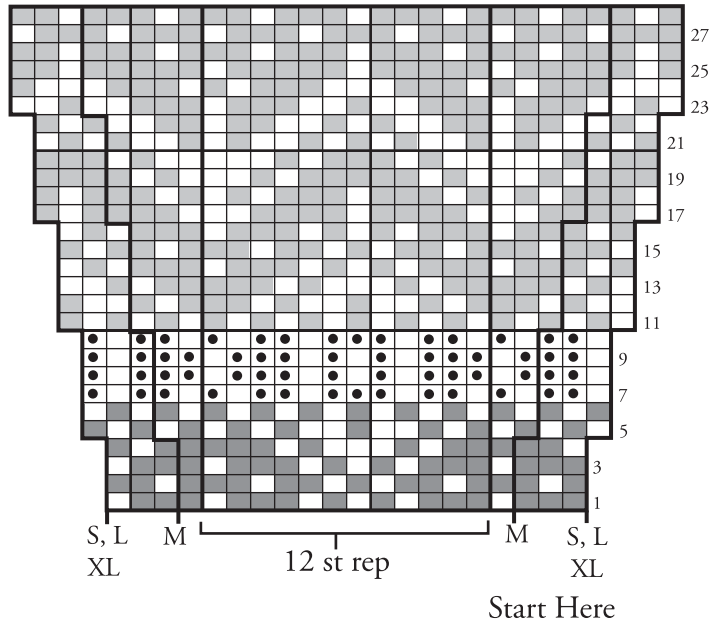
# CHART I







# CHART II



# CHART III



## Key

-  = MC
-  = Contrast A
-  = Contrast B
-  = Contrast C



... a part of your life.

P.O. Box 40, Listowel ON N4W 3H3