



MATERIALS

Bernat® Super Value™ (7 oz/197 g; 426 yds/389 m)

Contrast A Navy (07711) **3 balls**

Contrast B Steel Blue Heather (53014) **3 balls**

Size U.S. 8 (5 mm) knitting needles. Size U.S. 7 (4.5 mm) circular knitting needle 36" [90 cm] long **or size needed to obtain gauge.**

ABBREVIATIONS:

Beg = Begin(ning)

K = Knit

Rep = Repeat

RS = Right side

P = Purl

St(s) = Stitch(es)

WS = Wrong side

Yo = Yarn over

 KNIT | SKILL LEVEL: EASY

MEASUREMENTS

Approx 46 x 43" [117 x 109 cm].

GAUGE

18 sts and 24 rows = 4" [10 cm] with larger needles in stocking st.

Each Motif measures approx 7 x 9" [18 x 23 cm].

INSTRUCTIONS

Block I (make 3 each with A and B).

With pair of needles, cast on 42 sts.

Proceed in Box St Pat as follows:

1st row: (RS). K2. *P2. K2. Rep from * to end of row.

2nd row: P2. *K2. P2. Rep from * to end of row.

3rd row: As 2nd row.

4th row: As 1st row.

Rep 1st to 4th rows of Box St Pat until work from beg measures 7" [18 cm], ending with a WS row.

Cast off.

Block II (make 3 each with A and B).

With pair of needles, cast on 41 sts.

Proceed in Parallelogram St Pat as follows:

1st row: P1. *K5. P5. Rep from * to end of row.

2nd row: K4. *P5. K5. Rep from * to last 7 sts. P5. K2.

3rd row: P3. *K5. P5. Rep from * to last 8 sts. K5. P3.

4th row: K2. *P5. K5. Rep from * to last 9 sts. P5. K4.

5th row: *P5. K5. Rep from * to last st. P1.

6th row: As 5th row.

Rep 1st to 6th rows of Parallelogram St Pat until work from beg measures 7" [18 cm], ending with a WS row. Cast off.

Block III (make 3 each with A and B).

With pair of needles, cast on 43 sts.

Proceed in Triangles St Pat as follows:

1st row: K1. *P5. K1. Rep from * to end of row.

2nd row: P1. *K5. P1. Rep from * to end of row.

3rd row: K1. *K1. P3. K2. Rep from * to end of row.

4th row: P1. *P1. K3. P2. Rep from * to end of row.

5th row: K1. *K2. P1. K3. Rep from * to end of row.

6th row: P1. *P2. K1. P3. Rep from * to end of row.

7th row: As 6th row.

8th row: As 5th row.

9th row: As 4th row.

10th row: As 3rd row.

11th row: As 2nd row.

12th row: As 1st row.

Rep 1st to 12th rows of Triangles St Pat until work from beg measures 7" [18 cm], ending with a WS row. Cast off.

Block IV (make 3 each with A and B).

With pair of needles, cast on 42 sts. Proceed in Checks Pat as follows:

1st to 4th rows: K1. *K5. P5. Rep from * to last st. K1.

5th to 8th rows: P1. *P5. K5. Rep from * to last st. P1.

Rep 1st to 8th rows of Checks Pat until work from beg measures 7" [18 cm], ending with a WS row. Cast off.

Block V (make 3 each with A and B).

With pair of needles, cast on 41 sts. Proceed in Ridged Pat as follows:

1st and 2nd rows: Knit.

3rd row: (RS). P1. *K1. P1. Rep from * to end of row.

4th row: K1. *P1. K1. Rep from * end of row.

5th and 6th rows: Knit.

7th row: As 4th row.

8th row: As 3rd row.

Rep 1st to 8th rows of Ridged Pat until work from beg measures 7" [18 cm], ending with a WS row. Cast off.

FINISHING

Sew blocks into Blanket as shown in Diagram on page 3.

Side edging: With RS of work facing B and circular needle, pick up and knit 178 sts along side edge of Blanket. **Do not** join. Working back and forth across needle, knit 1 row. With A, knit 1 row.

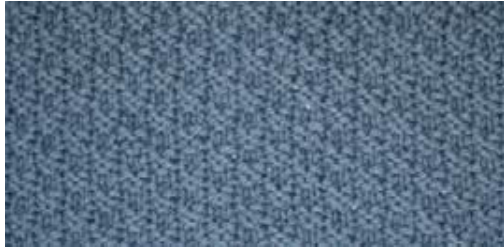
Cast off knitwise (WS).

Rep for other side.

Top and bottom edging: With RS of work facing, B and circular needle, pick up and knit 202 sts along top edge of Blanket. **Do not** join. Working back and forth across needle, knit 1 row. With A, knit 1 row.

Cast off knitwise (WS).

Rep for bottom of Blanket.



Block I



Block II



Block III





Block IV



Block V

Key

-  = Block with Contrast A.
-  = Block with Contrast B

Diagram

| | | | | |
|----|----|-----|----|-----|
| IV | V | A | II | III |
| I | II | III | IV | V |
| IV | V | I | II | III |
| I | II | III | IV | V |
| IV | V | I | II | III |
| I | II | III | IV | V |