



Svetlana Avrakh  
Designer



KNIT | SKILL LEVEL: INTERMEDIATE

**ABBREVIATIONS**

**Beg** = Beginning  
**Cont** = Continue(ity)  
**Dec** = Decreasing  
**Inc** = Increasing  
**K** = Knit  
**K2tog** = Knit next 2 stitches together  
**M1P** = Make 1 stitch by picking up horizontal loop lying before next stitch and purling into back of loop.  
**P** = Purl  
**P2tog** = Purl next 2 stitches together

**P2togtbl** = Purl next 2 stitches together through back loops  
**Rem** = Remaining  
**Rep** = Repeat  
**RS** = Right side  
**Ssk** = Slip next 2 stitches knitwise one at a time. Pass them back onto left-hand needle, then knit through back loops together  
**St(s)** = Stitch(es)  
**WS** = Wrong side

**MATERIALS**

Patons® Lincoln Fog™ (3.5 oz/100 g; 190 yds/174 m)

| Sizes                  | XS/S | M | L | XL | 2/3XL | 4/5XL |         |
|------------------------|------|---|---|----|-------|-------|---------|
| <b>Main Color (MC)</b> |      |   |   |    |       |       |         |
| Silver (12007)         | 5    | 5 | 6 | 6  | 7     | 8     | balls   |
| <b>Contrast A</b>      |      |   |   |    |       |       |         |
| White (12001)          | 1    | 1 | 1 | 2  | 2     | 2     | ball(s) |
| <b>Contrast B</b>      |      |   |   |    |       |       |         |
| Nest Egg (12014)       | 1    | 1 | 1 | 1  | 1     | 1     | ball    |

Sizes U.S. 9 (5.5 mm) and U.S. 10 (6 mm) knitting needles **or size needed to obtain gauge.** 4 stitch holders.

**SIZES**

**To fit bust measurement**

|              |                         |
|--------------|-------------------------|
| <b>XS/S</b>  | 28-34" [71-86.5 cm]     |
| <b>M</b>     | 36-38" [91.5-96.5 cm]   |
| <b>L</b>     | 40-42" [101.5-106.5 cm] |
| <b>XL</b>    | 44-46" [112-117 cm]     |
| <b>2/3XL</b> | 48-54" [122-137 cm]     |
| <b>4/5XL</b> | 56-62" [142-157.5 cm]   |

**Finished bust**

|              |                |
|--------------|----------------|
| <b>XS/S</b>  | 40" [101.5 cm] |
| <b>M</b>     | 44" [112 cm]   |
| <b>L</b>     | 48" [122 cm]   |
| <b>XL</b>    | 52" [132 cm]   |
| <b>2/3XL</b> | 60" [152.5 cm] |
| <b>4/5XL</b> | 66" [167.5 cm] |

## GAUGE

15 sts and 19 rows = 4" [10 cm] with smaller needles in stocking st

## INSTRUCTIONS

*The instructions are written for smallest size. If changes are necessary for larger sizes the instructions will be written thus ( ). Numbers for each size are shown in the same color throughout the pattern. When only one number is given in black, it applies to all sizes.*

**Notes:** When working from chart in Fair Isle technique, carry colors not in use loosely across WS of row, but never over more than 3 sts. When it must pass over more than 5 sts, weave it over and under color in use. The colors are never twisted around one another.

When working from chart in Color Block technique (Contrast B sections), wind small balls of the colors to be used, one for each separate area of color in the design. Start new colors at appropriate points. To change colors, twist the 2 yarns around each other where they meet on WS to avoid a hole.

## BACK

\*\*With B and smaller needles, cast on **73** (**81-89-97-109-121**) sts. Break B.

**1st row:** (RS). With MC, K1. \*P1. K1. Rep from \* to end of row.

**2nd row:** P1. \*K1. P1. Rep from \* to end of row.

Rep last 2 rows of (K1. P1) ribbing until work from beg measures 2" [5 cm], ending on 1st row.

**Next row:** (WS). P**1** (**9-5-13-1-1**). \*M1P. P6. Rep from \* to end of row. **85** (**93-103-111-127-141**) sts.

Change to **larger** needles and work Chart I to end of chart, reading **knit rows from right to left and purl rows from left to right**. See Chart I on page 4.

**Next row:** (WS). P**5** (**3-12-7-1-13**). \*P2tog. P**6** (**7-5-6-7-6**). Rep from \* to end of row. **75** (**83-90-98-113-125**) sts.

Change to **smaller** needles and with MC only, cont in stocking st until work from beg measures **17** (**17½-17½-18-18½-18½**)" [**43** (**44.5-44.5-45.5-47-47**) cm], ending on a purl row.

**Shape raglans:** Cast off **3** (**4-5-6-8-10**) sts beg next 2 rows. **69** (**75-80-86-97-105**) sts.

Work **2** (**2-0-0-0-0**) rows even.

**1st row:** (RS). K2. ssk. Knit to last 4 sts. K2tog. K2.

**2nd row:** Purl.

Rep last 2 rows **12** (**14-16-15-10-7**) times more. **43** (**45-46-54-75-89**) sts.\*\*

**1st row:** (RS). K2. ssk. Knit to last 4 sts. K2tog. K2.

**2nd row:** P2. P2tog. Purl to last 4 sts. P2togtbl. P2.

**3rd row:** As 1st row.

**4th row:** Purl.

Rep last 4 rows **1** (**1-1-2-5-7**) time(s) more, then 1st and 2nd rows once. Leave rem **27** (**29-30-32-35-37**) sts on a st holder.

## FRONT

Work from \*\* to \*\* as given for Back.

**Sizes XL, 2/3XL and 4/5XL only:**

**1st row:** (RS). K2. ssk. Knit to last 4 sts. K2tog. K2.

**2nd row:** P2. P2tog. Purl to last 4 sts. P2togtbl. P2.

**3rd row:** As 1st row.

**4th row:** Purl.

Rep last 4 rows (**0-3-5**) times more.

**All sizes: Shape neck:** Work on **43** (**45-46-48-51-53**) sts as follows:

**1st row:** (RS). K2. ssk. K9. K2tog. **Turn.** Leave rem sts on a spare needle.

**2nd row:** P2tog. P7. P2togtbl. P2. 11 sts.

**3rd row:** K2. ssk. K5. K2tog.

**4th row:** P9.

**5th row:** K2. ssk. K3. K2tog. 7 sts.

**6th row:** P3. P2togtbl. P2. 6 sts.

**7th row:** K2. ssk. K2tog.

**8th row:** P4.

**9th row:** K2. ssk. 3 sts.

**10th row:** P2togtbl. P1.

**11th row:** ssk. Fasten off.

With RS facing slip next **13** (**15-16-18-21-23**) sts onto a st holder.

With MC, proceed as follows:

**1st row:** (RS). ssk. K9. K2tog. K2. 13 sts.

**2nd row:** P2. P2tog. P7. P2togtbl. 11 sts.

**3rd row:** ssk. K5. K2tog. K2.

**4th row:** P9.

**5th row:** ssk. K3. K2tog. K2. 7 sts.

**6th row:** P2. P2tog. P3. 6 sts.

**7th row:** ssk. K2tog. K2.

**8th row:** P4.

**9th row:** K2tog. K2. 3 sts.  
**10th row:** P1. P2tog.  
**11th row:** K2tog. Fasten off.

## SLEEVES

With B and smaller needles cast on **39** (39-39-41-45-45) sts. Break B. With MC, work in (K1. P1) ribbing as given for Back for 2" [5 cm], ending on a 1st row.

**Next row:** (WS). P3 (3-3-5-3-3). \*M1P. P6 (6-6-6-7-7). Rep from \* to end of row. **45** (45-45-47-51-51) sts.

Change to **larger** needles and work Chart II to end of chart, reading **knit rows from right to left** and **purl rows from left to right**, noting side incs on **13th** (7th-5th-7th-5th-5th) row and every following **12th** (10th-8th-6th-4th-4th) row **1** (2-3-4-7-7) time(s) more. **49** (51-53-57-67-67) sts. See Chart II on page 4.

**Next row:** (WS). P1 (1-4-1-4-3). \*P2tog. P6 (8-5-6-7-14). Rep from \* to end of row. **43** (46-46-50-60-63) sts.

Change to **smaller** needles and with MC only, cont in stocking st, inc 1 st each end of needle on next and every following **10th** (8th-6th-6th-6th-4th) row **2** (3-4-4-3-5) times. **49** (52-56-60-68-75) sts.

Cont even until work from beg measures **18** (18-18½-18½-17½-16½)" [45.5 (45.5-47-47-44.5-42) cm], ending on a purl row.

**Shape raglans:** Cast off **3** (4-5-6-8-10) sts beg next 2 rows. **43** (44-46-48-52-55) sts.

Work **0** (2-2-2-2-2) rows even.

**1st row:** (RS). K2. ssk. Knit to last 4 sts. K2tog. K2.

Work 3 rows even.

Rep last 4 rows **0** (1-2-3-3-3) time(s) more. **41** (40-40-40-44-47) sts.

**1st row:** (RS). K2. ssk. Knit to last 4 sts. K2tog. K2.

**2nd row:** Purl.

Rep last 2 rows **16** (15-14-13-14-15) times more. Leave rem **7** (8-10-12-14-15) sts on a st holder.

## FINISHING

Pin all pieces to measurements. Cover with a damp cloth leaving cloth to dry. Sew raglan seams, leaving back left raglan open.

**Neck edging:** With RS facing, smaller needles and MC, K7 (8-10-12-14-15) from left sleeve st holder. Pick up and knit 10 sts down left front neck edge. K13 (15-16-18-21-23) from front st holder, dec 1 st at center. Pick up and knit 10 sts up right front neck edge. K7 (8-10-12-14-15) from right sleeve st holder. K27 (29-30-32-35-37) from back st holder. **73** (79-85-93-103-109) sts

Work in (K1. P1) ribbing as given for Back for 1" [2.5 cm], ending on a WS row. Break MC.

With B, cast off in rib.

Sew left back raglan seam and neck edging. Sew side and sleeve seams.

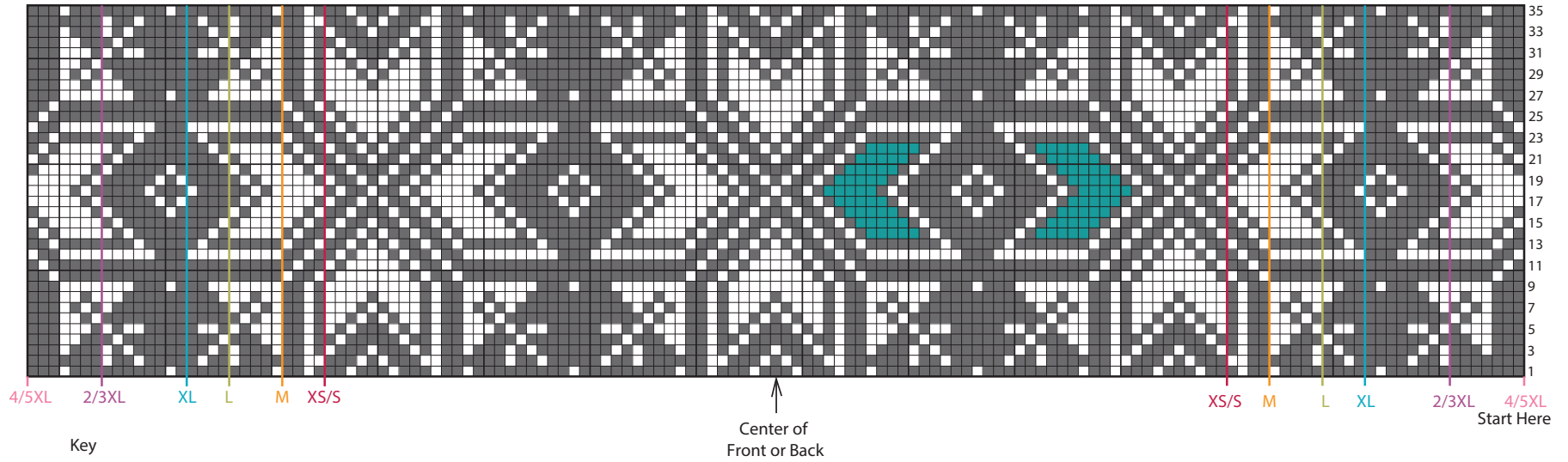
Front



Back



### Chart I



Key

- = MC
- = Contrast A
- = Contrast B

### Chart II

