



KNIT | SKILL LEVEL: INTERMEDIATE

ABBREVIATIONS

Approx = Approximately

Beg = Beginning

Decs = Decreases

K = Knit

K2tog = Knit next 2 stitches together

P = Purl

Pat = Pattern

PM = Place marker

Rep = Repeat

Rnd(s) = Round(s)

Ssk = Slip next 2 stitches knitwise one at a time. Pass them back onto left-hand needle, then knit through back loops together

St(s) = Stitch(es)

Tog = Together

WS = Wrong side

SIZE

One size to fit Adult palm 7½" [19 cm].

GAUGE

17 sts and 21 rows = 4" [10 cm] in stocking st with larger needles.

INSTRUCTIONS

Note: When working from chart, carry yarn not in use loosely across WS of work but never over more than 5 sts. When it must pass over more than 5 sts, weave it over and under color in use. The colors are never twisted around one another.

RIGHT MITTEN

**With set of 4 smaller needles and A, cast on 36 sts. Divide onto 3 needles (12, 12, 12) sts. PM on first st for beg of rnd.

1st rnd: *K2. P2. Rep from * around.

Rep last rnd of (K2. P2) ribbing for 4" [10 cm].**

Change to set of larger needles, knit 1st to 14th rnds of Chart I, *reading rnds from right to left.*

MATERIALS

Patons® Alpaca Blend™ (3.5 oz/100 g; 155 yds/142 m)

Contrast A Sable (01004) **1 ball**

Contrast B Toffee (01012) **1 ball**

Contrast C Oats (01003) **1 ball**

Patons® Shetland Chunky™ (3.5 oz/100 g; 143 yds/131 m)

Contrast D White (78006) **1 ball**

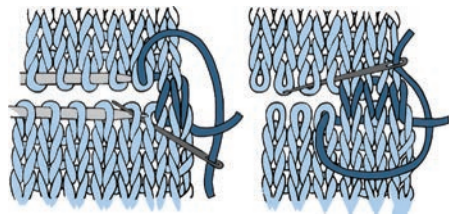
Set of 4 sizes U.S. 8 (5 mm) and U.S. 9 (5.5 mm) double-pointed knitting needles **or size needed to obtain gauge.** Stitch marker. Stitch holder. Yarn needle.

Thumb opening: 1st rnd: Pat across 23 sts. Slip last 5 sts onto a stitch holder. Pat to end of rnd.

2nd rnd: Pat 18 sts. **Turn.** Cast on 5 sts. **Turn.** Pat to end of rnd. 36 sts.

***Cont working chart to end of chart, noting 4-st decs on every rnd after 32nd rnd. 8 sts rem.

With B, graft 2 sets of 4 sts tog.



Make thumb: With A and larger needles, K5 from st holder. Pick up and knit 5 sts at base of thumb. Divide these 10 sts onto 3 needles (3, 3, 4). Join in rnd. PM on first st. Knit 14 rnds even.

Next rnd: (K2tog) 5 times. Break yarn. Thread end through rem 5 sts and fasten securely.***

LEFT MITTEN

Work from ** to ** as given for Right Mitten. Knit 1st to 14th rnds of Chart II, *reading rnds from right to left*.

Thumb opening: 1st rnd: Pat across 18 sts. Slip last 5 sts onto a stitch holder. Pat to end of rnd.

2nd rnd: Pat 13 sts. **Turn.** Cast on 5 sts. **Turn.** Pat to end of rnd. 36 sts.

Work from *** to *** as given for Right Mitten.

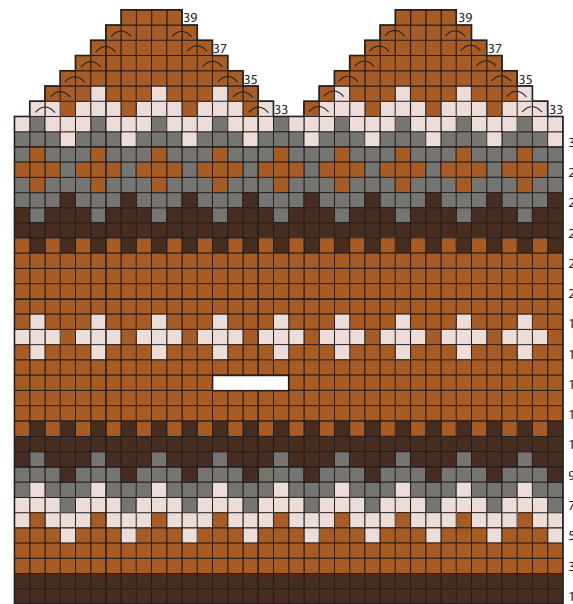
Finishing: Fold cuff in half to WS of Mitten. Sew cuff in position to inside of Mitten as shown in photo.



Key

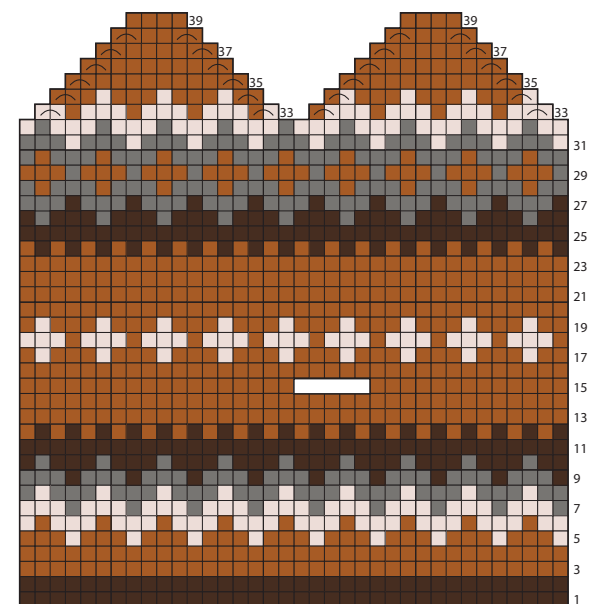
- = Contrast A
- = Contrast B
- = Contrast C
- = Contrast D
- ⤴ = K2tog

Chart I



Start Here

Chart II



Start Here