



Technique:	Sewing
Designed By:	Linda Turner Griepentrog
Skill Level:	Beginner
Crafting Time:	Weekend
Finished size:	One size fits all (30" [76.20cm] long at center front)

Featuring Dual Duty XP® All-purpose Thread

Every Halloween party hostess needs to protect their garb and this ruffy cover-up is the perfect thing to set the mood in style. It's a one-size fits all project, so perfect for gift-giving as well as making it for yourself.

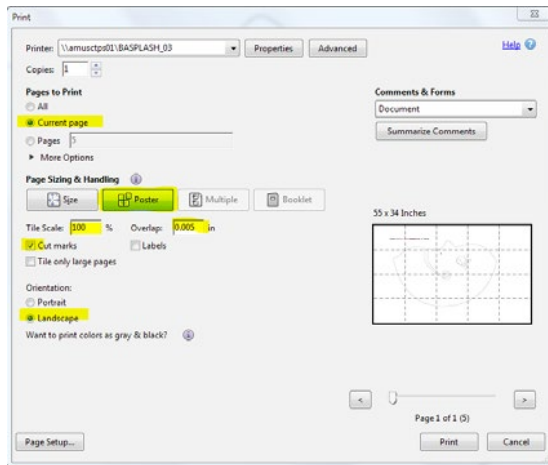
Supplies

- **Dual Duty XP® All-purpose thread in coordinating colors**
- 1¼ yards (1.14m) black-and-white polka dot fabric for apron
- ¼ yard (22.86cm) orange print for ties and neck tie loop
- ⅜ yard (34.29cm) each 3 different ruffle fabrics
- 5 yards (4.57m) black medium rickrack
- 2½ yards (2.27m) lime medium rickrack
- 1 yard (.91m) ⅜" (.95cm) orange/black dot grosgrain ribbon
- 2 D-rings, 1" (2.54cm)
- Pattern tracing paper

Creating the Template

Create template: We have given you two options for doing this. On page 4, the design is shown on a grid which may be used to transfer the drawing to the 1" grid fabric. Page 6 is a template that you may print with your printer, then tape the pages together.

Printing template: Make sure to set printer for Tiled or Poster setting and check Actual size or print at 100%. Here is an example of what your settings will look like:



Cutting

WOF=width-of-fabric

From the black polka dot fabric, cut:

- 1 Apron using pattern
- 1 neck tie strip, 2½" x 28" (6.35cm x 71.12cm)

From the orange print, cut:

- 2 waistline ties, 3" x 32" (7.62cm x 81.28cm)
- 1 neck tie loop, 2½" x 3½" (6.35cm x 8.89cm)

From each ruffle fabric, cut:

- 2 strips, 6" x WOF (15.24cm x WOF)

Preparing the Ties and Loop

Note: Seam allowances are ¼" (.64cm).

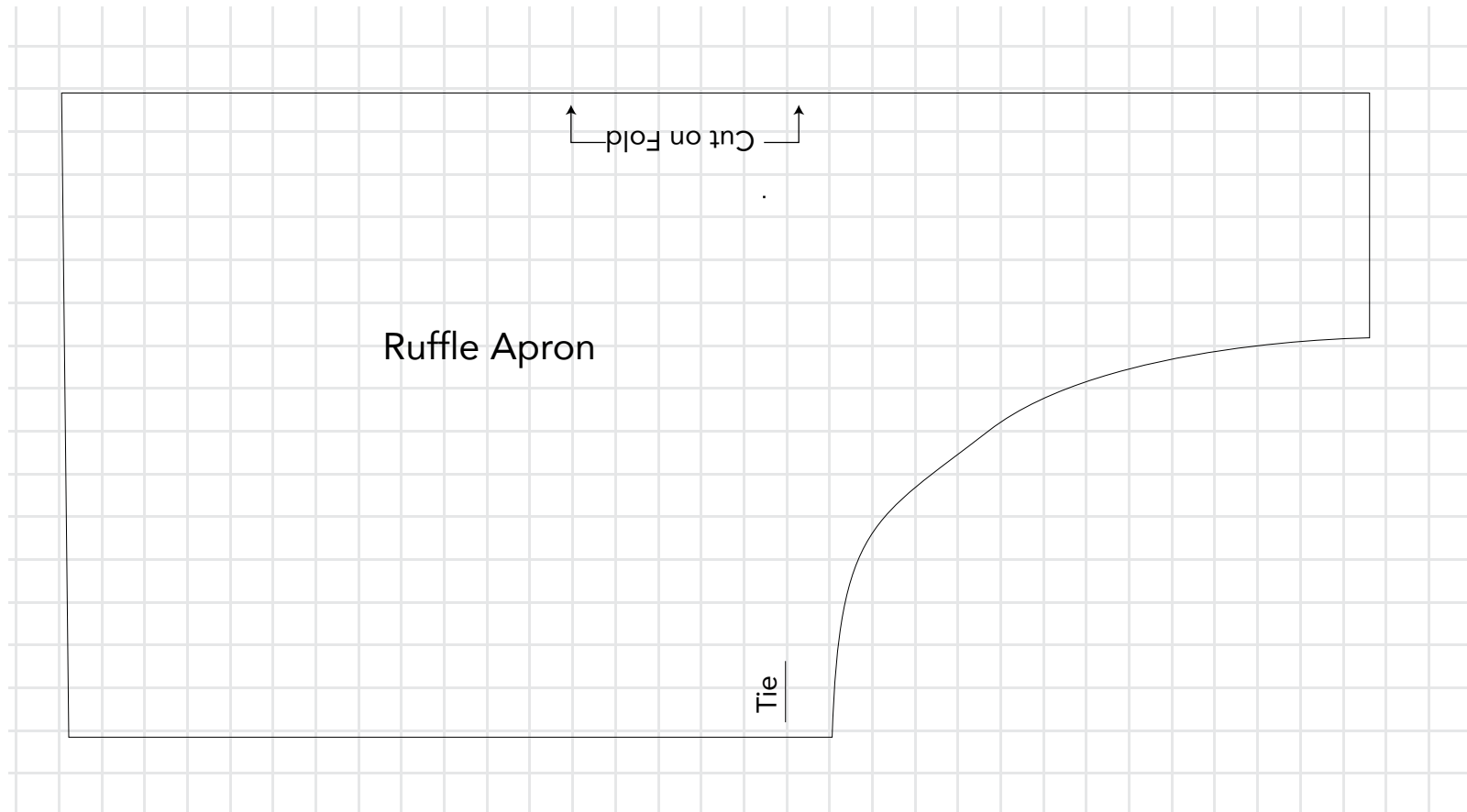
1. With right sides together, fold the necktie strip in half lengthwise. Stitch the long edges and one end together. Turn right side out and press.
2. Repeat step 1 for each waistline tie. Fold the neck tie loop in half and stitch the long edges together. Turn each piece right side out.
3. Slide the neck tie loop through the D-rings and baste the ends together.

Making the Ruffles

1. Sew the short ends of each matching ruffle pair together and press the seams open.
2. Press under a narrow hem on the lower edge of a ruffle strip and sew the rickrack under the folded hem edge. Repeat for each ruffle.
3. Serge- or zigzag finish the upper edge of each ruffle.
4. Stitch a row of gathering stitches along each ruffle upper edge.
5. Quarter the ruffle distance and pin mark. Repeat for each ruffle.

Assembling the Apron

1. Press under a 1¼" (3.18cm) hem at the apron bib edge, then press that width in half again. Tuck the raw end of the neck tie under the hem on the right side of the bib. Tuck the raw end of the neck tie loop under the hem on the left side. Edgestitch the lower hem fold in place catching the tie/loop in the stitching. Edgestitch the upper fold of the apron bib anchoring the tie/loop.
2. To finish the armholes, press under a double ⅜" (.95cm) hem along both curves and topstitch. Repeat for the apron lower edge hem.
3. Mark a line across the apron width 5" (12.70cm) from the lower hem edge. Quarter the apron width and pin mark.
4. Matching the ruffle upper edge to the drawn line and matching quarter marks, pin the ruffle in place. Distribute the gathers evenly and stitch in place along the upper edge.
5. Mark another line across the apron 4" (10.16cm) up from the lower ruffle upper edge and sew the second ruffle in place in the same manner.
6. Mark the third line 3½" (8.89cm) up from the middle ruffle upper edge and sew the top ruffle in place in the same manner.
7. Sew both edges of the grosgrain ribbon in place over the upper ruffle gathering line.
8. To hem the sides, press under a double ¾" (1.91cm) hem (include the ruffle ends in the hem). Tuck the waistline tie ends under the hem edge at the lower armhole corner and topstitch the hem in place, catching the ties. Sew another row of stitching along the apron edge to anchor the ties in place.
9. Adjust the neck tie length using the D-rings to secure.



1 - .25" square = 1inch

Ruffle Apron

Cut on Fold

Tie

Print this page tiled on 8.5" x 11" paper tiled and tape together to make a full size template