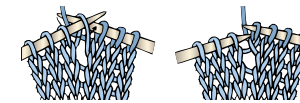




ABBREVIATIONS: yarnspirations.com/abbreviations

Alt = Alternate
Approx = Approximate(ly)
Beg = Begin(ning)
Cont = Continue(ity)
Dec = Decrease(ing)
Inc = Increase(ing)
K = Knit
K2tog = Knit next 2 stitches together

M1 = Make 1 stitch by picking up horizontal loop lying before next stitch and knitting into back of loop



P = Purl
Pat = Pattern
Rem = Remain(ing)

Rep = Repeat
Rnd(s) = Round(s)
Ssk = Slip next 2 stitches knitwise one at a time. Pass them back onto left-hand needle, then knit through back loops together.
St(s) = Stitch(es)
Tog = Together
WS = Wrong side



INTERMEDIATE

SIZE

One size to fit average woman.

GAUGE

24 sts and 32 rows = 4" in stocking stitch with larger needles.
25 sts and 29 rows = 4" in Fair Isle pat with larger needles.

INSTRUCTIONS

Note: When working from charts, carry yarn not in use loosely across WS of row but never over more than 5 sts. When it must pass over more than 5 sts, weave it over and under color not in use. The colors are never twisted around one another.

RIGHT MITTEN

**With A and smaller set of needles, cast on 48 sts. Divide evenly on 3 needles (16, 16, 16). Place marker and join to beg working in rnds.

1st rnd: *With A, K2. With B, K2. Rep from * around.

2nd rnd: *With A, K2. With B, P2. Rep from * around.

Rep last rnd of (K2. P2) 2 colored ribbing for 2" [5 cm].

Change to larger set of needles.

Next rnd: With A, knit, inc 2 sts evenly across. 50 sts.**

MATERIALS

Patons® Classic Wool DK Superwash™ (1.75 oz/50 g; 125 yds/114 m)

	Mittens	Hat	
Contrast A Claret (12532)	2	2	balls
Contrast B Aran (12008)	2	2	balls

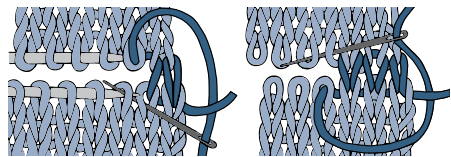
Set of 4 sizes U.S. 4 (3.5 mm) and U.S. 5 (3.75 mm) double-pointed knitting needles. Size U.S. 5 (3.75 mm) circular knitting needle 20" [51 cm] long for Hat **or size needed to obtain gauge**. Stitch marker. Stitch holder.



Knit 1st to 19th rnds of Chart I, *reading rnds from right to left*.**
Chart I is shown on page 3.

Thumb opening: 1st rnd: Pat across 36 sts. Slip last 8 sts onto a st holder. Pat to end of rnd.
2nd rnd: Pat across 28 sts. **Turn.** Cast on 8 sts. **Turn.** Pat to end of rnd. 50 sts.

***Cont even in chart, noting 4-st dec after 42nd rnd on every rnd. 6 sts rem.
With B, graft 2 sets of 3 sts tog.



Make thumb: With A and larger set of needles, K8 from st holder. Pick up and knit 8 sts at base of thumb. Divide these 16 sts onto 3 needles (5, 5, 6). Join in rnd, placing marker on first st. Knit 16 rnds.
Next rnd: (K2. K2tog) 4 times. 12 sts.

Next rnd: (K2tog) 6 times. Break yarn. Thread end through rem sts and fasten securely.***

LEFT MITTEN

Work from ** to ** as given for Right Mitten.
Knit 1st to 19th rnds of Chart II, *reading rnds from right to left*. Chart II is shown on page 4.
Thumb opening: 1st rnd: Pat across 22 sts. Slip last 8 sts onto a st holder. Pat to end of rnd.
2nd rnd: Pat across 14 sts. **Turn.** Cast on 8 sts. **Turn.** Pat to end of rnd. Work from *** to *** as given for Right Mitten.

HAT

With smaller set of needles and A, cast on 112 sts. Divide sts on 3 needles (36, 36, 40). Join in rnd, placing marker on first st.
1st rnd: *With A, K2. With B, K2. Rep from * around.
2nd rnd: *With A, K2. With B, P2. Rep from * around.
Rep last rnd of (K2. P2) 2 colored ribbing for 2½" [6 cm].
Change to larger circular needle and proceed as follows:
1st rnd: With B, knit.

2nd rnd: *K14. M1. Rep from * around. 120 sts.
Work Chart III to end of chart, *reading rnds from right to left*, noting 30-st rep will be worked 4 times. Break B.
Chart III is shown on page 5.

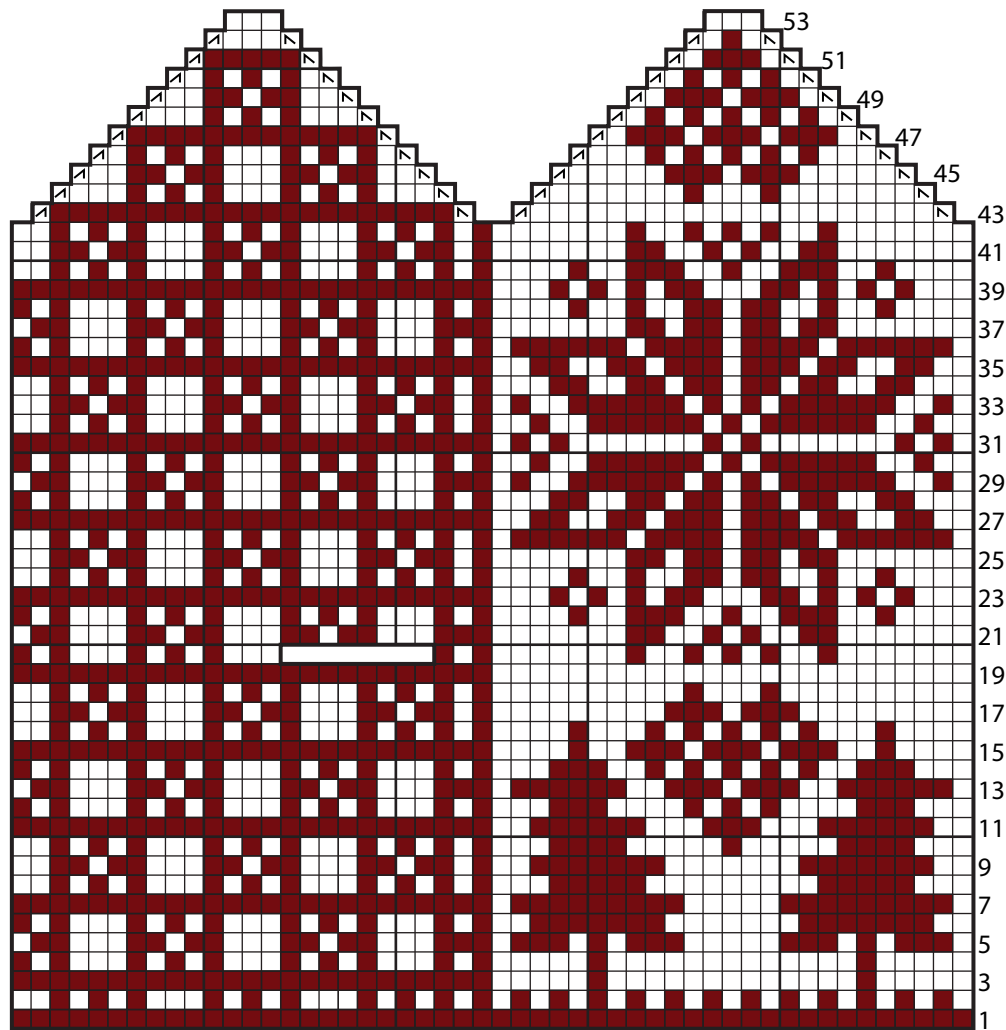
With A only, proceed as follows, changing to larger set of double-pointed needles when necessary.
Shape Crown: 1st rnd: *K13. K2tog. Rep from * around. 112 sts.
2nd and alt rnds: Knit.
3rd rnd: *K12. K2tog. Rep from * around. 104 sts.
5th rnd: *K11. K2tog. Rep from * around. 96 sts.
7th rnd: *K10. K2tog. Rep from * around. 88 sts.
9th rnd: *K9. K2tog. Rep from * around. 80 sts.
11th rnd: *K8. K2tog. Rep from * around. 72 sts.
13th rnd: *K7. K2tog. Rep from * around. 64 sts.
15th rnd: *K6. K2tog. Rep from * around. 56 sts.
17th rnd: *K5. K2tog. Rep from * around. 48 sts.
19th rnd: *K4. K2tog. Rep from * around. 40 sts.

21st rnd: *K3. K2tog. Rep from * around. 32 sts.
23rd rnd: *K2. K2tog. Rep from * around. 24 sts.
25th rnd: *K1. K2tog. Rep from * around. 16 sts.
Break A, leaving a long end. Thread end through rem loops and draw up tightly. Fasten securely.





CHART I
RIGHT MITTEN

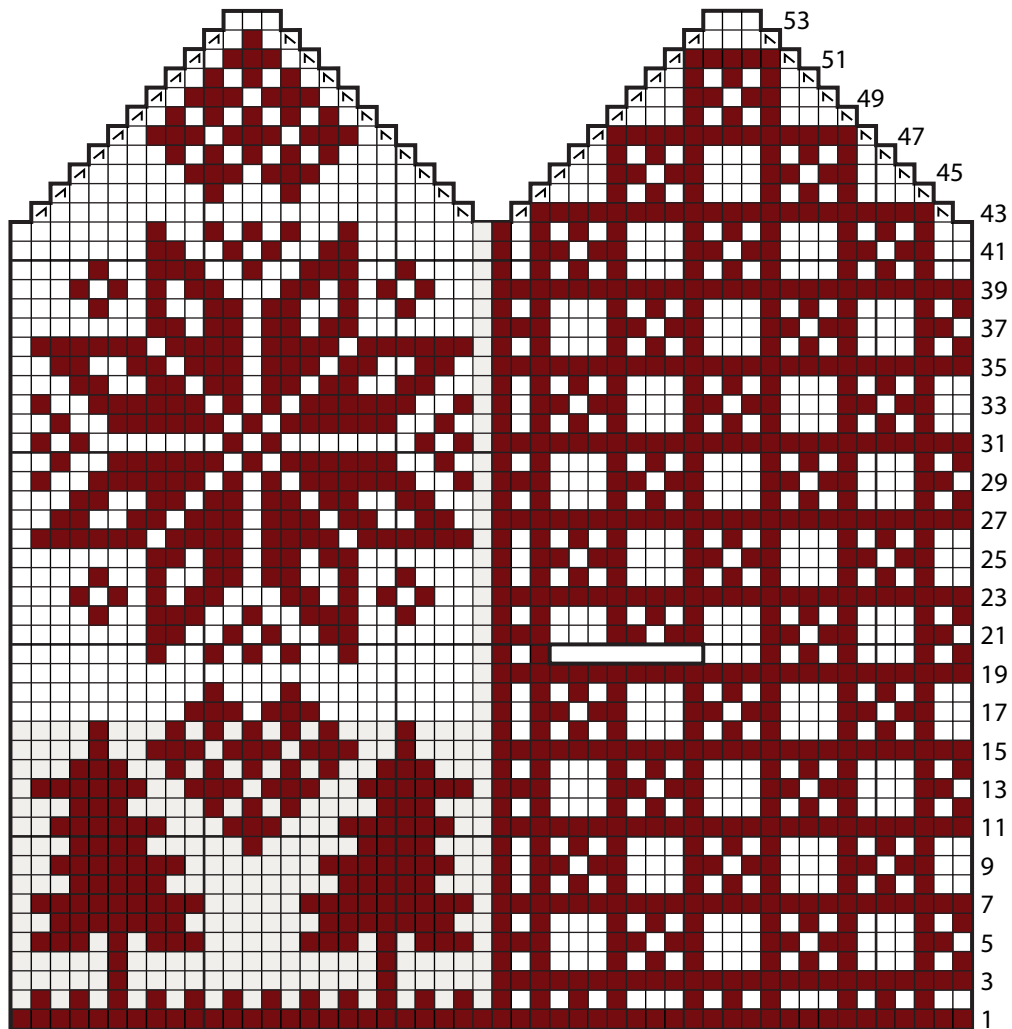


- Key
- = Contrast A
 - = Contrast B
 - ▣ = ssk
 - ▤ = K2tog

Start Here



CHART II
LEFT MITTEN



- Key
- = Contrast A
 - = Contrast B
 - ▣ = ssk
 - ▤ = K2tog

Start Here



CHART III

