



KNIT | SKILL LEVEL: **INTERMEDIATE**

ABBREVIATIONS

Approx = Approximately

Beg = Beginning

K = Knit

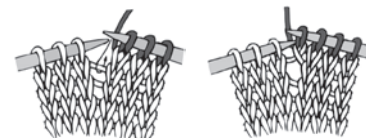
K2tog = Knit next 2 stitches together

Kfb = Increase 1 stitch by knitting into front and back of next stitch

Kfbf = Increase 2 stitches by knitting into front, back, and front of next stitch

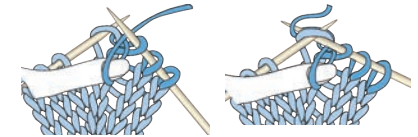
LK2tog (Knit 2 together Loop Style) = Knit next 2 stitches together, do not drop stitches from needle. Bring yarn to front of work, wind yarn up and over left thumb to form loop. Bring yarn to back of work. Knit into same 2 stitches together dropping stitch from needle (2 stitches made).

M1 = Make 1 stitch by picking up horizontal loop lying before next stitch and knitting into back of loop.



MB (Make bobble) = Kfbf. 3 sts. Turn. P3. Turn. K3. Turn. P3. Turn. K1. K2tog. Pass second st on right-hand needle over first st and off the needle. Push bobble to right-side of work.

ML (Make Loop) = Knit into next stitch, do not drop stitch from needle. Bring yarn to front of work, wind yarn up and over left thumb to form loop. Bring yarn to back of work. Knit into same stitch dropping stitch from needle (2 stitches made).



P = Purl

P2tog = Purl next 2 stitches together

Pat = Pattern

Rem = Remaining

Rep = Repeat

RS = Right side

S11 = Slip next stitch knitwise

Ssk = Slip next 2 stitches knitwise one at a time. Pass them back onto left-hand needle, then knit through back loops together

St(s) = Stitch(es)

WS = Wrong side

MATERIALS

Bernat® Freesia™ (7.9 oz/225 g; 309 yds/282 m)

Pink Dusk (24003)

2 balls

Size U.S. 9 (5.5 mm) circular knitting needle 24" [61 cm] long **or size needed to obtain gauge.** 20" [51 cm] square pillow form. 4 stitch markers.

MEASUREMENTS

Approx 20" [51 cm] square.

GAUGE

13 sts and 18 rows = 4" [10 cm] in stocking stitch.

INSTRUCTIONS

FRONT

Notes:

- Front begins with 64 sts (multiple of 16 sts) on your needles.
- Base Triangles worked over 44 sts – multiple of 11 sts.
- Upward Facing Garter St Chevron Pat worked over 88 sts – multiple of 22 sts.

Cast on 64 sts. **Do not** join. Working back and forth across needle in rows, proceed as follows:

1st row: (RS). Knit.

2nd row: *(K2tog) twice. (K2, K2tog) 3 times. Rep from * to end of row. 44 sts.

Proceed with Base Triangles as follows:

Base Triangles

1st row: (RS). K1. **Turn.**

2nd row: P1. **Turn.**

3rd row: Sl1. K1. **Turn.**

4th row: P2. **Turn.**

5th row: Sl1. K2. **Turn.**

6th row: P3. **Turn.**

7th row: Sl1. K3. **Turn.**

8th row: P4. **Turn.**

9th row: Sl1. K4. **Turn.**

10th row: P5. **Turn.**

11th row: Sl1. K5. **Turn.**

12th row: P6. **Turn.**

13th row: Sl1. K6. **Turn.**

14th row: P7. **Turn.**

15th row: Sl1. K7. **Turn.**

16th row: P8. **Turn.**

17th row: Sl1. K8. **Turn.**

18th row: P9. **Turn.**

19th row: Sl1. K9. **Turn.**

20th row: P10. **Turn.**

21st row: Sl1. K10. **Do not turn.**

Rep these 21 rows 3 times more. 4 Triangles.

Turn.

Proceed with Upward Facing Bobble and Loop St Chevron Pat as follows:

See chart on page 4.

Upward Facing Bobble and Loop St Chevron Pat

Note: Place st markers between each set of decreases, moving them up each row as you work, for easier counting.

Set-up row: (WS). *P11. Pick up and purl 11 sts along next edge of Triangle. Rep from * to end of last Triangle of row. 88 sts.

1st row: (RS). *ssk. K8. (Kfb) twice. K8. K2tog. Rep from * to end of row.

2nd row: Knit.

3rd row: *ssk. K1. MB. (K2. MB) twice. (Kfb) twice. (MB. K2) twice. MB. K1. K2tog. Rep from * to end of row.

4th row: Knit.

5th and 6th rows: Rep 1st and 2nd rows.

7th row: *ssk. K8. (Kfb) twice. K8. K2tog. Rep from * to end of row.

8th row: Purl.

9th and 10th rows: Rep 7th and 8th rows.

11th row: *ssk. (ML. K1) 4 times. (ML. M1) twice. (ML. K1) 4 times. LK2tog. Rep from * to last 22 sts. Ssk. (ML. K1) 4 times. (ML. M1) twice. (ML. K1) 4 times. K2tog. 131 sts.

12th row: K2. *K2tog. K1. Rep from * to end of row. 88 sts.

13th row: ssk. (K1. ML) 4 times. (M1. ML) twice. (K1. ML) 4 times. K2tog. *LK2tog. (K1. ML) 4 times. (M1. ML) twice. (K1. ML) 4 times. K2tog. Rep from * to end of row. 131 sts.

14th row: *K1. K2tog. Rep from * to last 2 sts. K2. 88 sts.

15th to 18th rows: Rep 7th to 10th rows.

19th to 24th rows: Rep 1st to 6th rows.

25th to 28th rows: Rep 7th to 10th rows.

Rep 1st to 28th rows once more, then rep 1st to 23rd rows once. Proceed with Final Triangles as follows:

Final Left Side Triangle

1st row: (WS). K1. **Turn.**

2nd row: Kfb. **Turn.**

3rd row: K1. P2tog. **Turn.**

4th row: K1. M1. K1. **Turn.**

5th row: K1. P1. P2tog. **Turn.**

6th row: K2. M1. K1. **Turn.**

7th row: K1. P2. P2tog. **Turn.**

8th row: K3. M1. K1. **Turn.**

9th row: K1. P3. P2tog. **Turn.**

10th row: K4. M1. K1. **Turn.**

11th row: K1. P4. P2tog. **Turn.**

12th row: K6. **Turn.**

13th row: K2tog. P3. P2tog. **Turn.**

14th row: K5. **Turn.**

15th row: K2tog. P2. P2tog. **Turn.**

16th row: K4. **Turn.**

17th row: K2tog. P1. P2tog. **Turn.**

18th row: K3. **Turn.**

19th row: K2tog. P2tog. **Turn.**

20th row: K2. **Turn.**

21st row: K2tog. P2tog. Pass second st from right-hand needle over first st and off needle. **Do not Turn.**

Final Right Leaning Triangles

1st row: (WS). P9. P2tog. **Turn.**

2nd row: K11. **Turn.**

3rd row: K2tog. P8. P2tog. **Turn.**

4th row: K10. **Turn.**

5th row: K2tog. P7. P2tog. **Turn.**

6th row: K9. **Turn.**

7th row: K2tog. P6. P2tog. **Turn.**

8th row: K8. **Turn.**

9th row: K2tog. P5. P2tog. **Turn.**

10th row: K7. **Turn.**

11th row: K2tog. P4. P2tog. **Turn.**

12th row: K6. **Turn.**

13th row: K2tog. P3. P2tog. **Turn.**

14th row: K5 **Turn.**

15th row: K2tog. P2. P2tog. **Turn.**

16th row: K4. **Turn.**

17th row: K2tog. P1. P2tog. **Turn.**

18th row: K3. **Turn.**

19th row: K2tog. P2tog. **Turn.**

20th row: K2. **Turn.**

21st row: K2tog. P2tog. Pass second st from right-hand needle over first st and off needle. **Do not Turn.**

Rep 1st to 21st rows twice more.

Final Right Side Triangle

1st row: (WS). P10. **Turn.**

2nd row: K11. **Turn.**

3rd row: k2tog. P7. K2tog. **Turn.**

4th row: K9. **Turn.**

5th row: K2tog. P5. K2tog. **Turn.**

6th row: K7. **Turn.**

7th row: K2tog. P3. K2tog. **Turn.**

8th row: K5. **Turn.**

9th row: K2tog. P1. K2tog. **Turn.**

10th row: K1. K2tog. Pass second st from right-hand needle over first st and off needle.

Fasten off rem st.

BACK (make 2)

Cast on 65 sts. **Do not join.** Working back and forth across needle in rows, proceed as follows:

Ribbing: 1st row: (RS). K1. *P1. K1. Rep from * to end of row.

2nd row: P1. *K1. P1. Rep from * to end of row.

3rd to 10th rows: Rep 1st and 2nd rows 4 times more.

Beg on a knit row proceed in stocking st until work from beg measures 14" [35.5 cm].

Cast off.

FINISHING

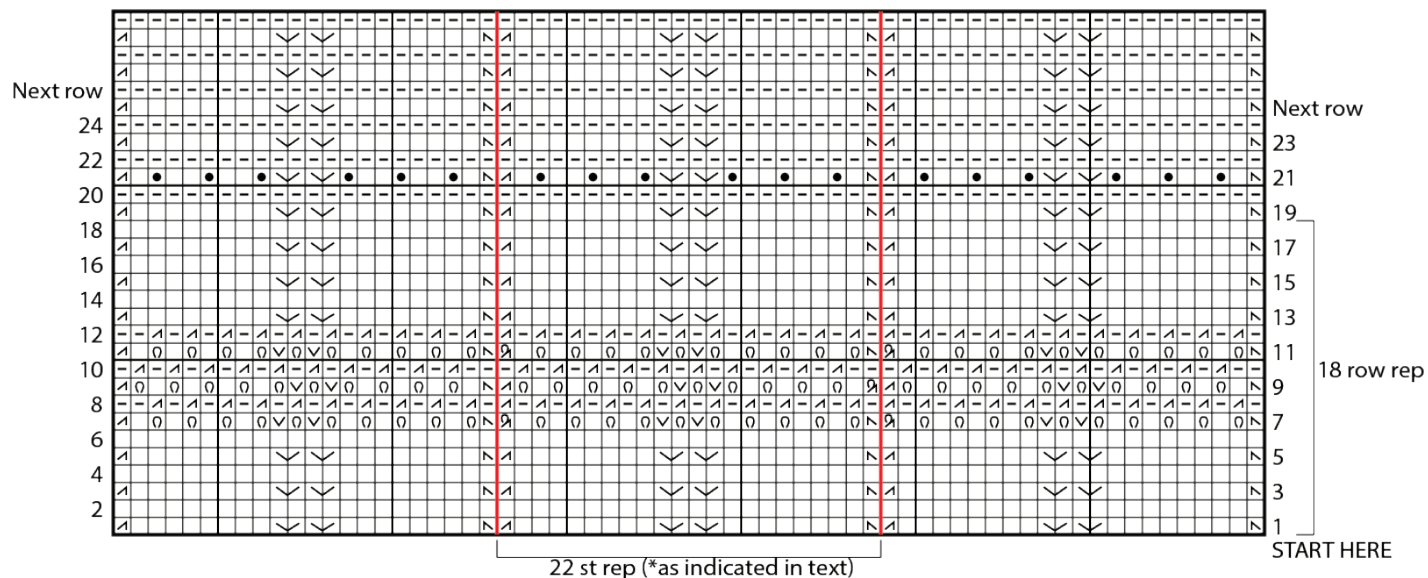
Blocking: Pin Front and Back pieces to measurements. Cover with a damp towel to dry.

Joining Front and Back: Overlap Back pieces to match Front, with ribbed section in center to create opening to insert pillow form. Working through all thicknesses, seam 4 sides of Pillow. Insert pillow form.



Note: Stitches in chart may appear to be offset and/or stacked on top of one another but this won't necessarily be the case as you work the rows due to the increase and decreases in the chevron pattern. Please follow the chart row-by-row as written to complete the pattern.

UPWARD FACING BOBBLE AND LOOP ST CHEVRON PAT



KEY

- | | |
|---------------------------------------|-------------------------------|
| ☐ = Knit on RS rows. Purl on WS rows. | ◻ = ML (Make Loop) |
| ▬ = Knit on WS rows | ☑ = M1 (Make 1 stitch) |
| ▤ = ssk | ◻ = LK2tog (K2tog Loop Style) |
| ▾ = Kfb | ◻ = MB (Make Bobble) |
| ▤ = K2tog | |